

FOR TEMPORARY ROADWAY AND PROPOSED DRIVEWAY, SEE DRIVEWAY DETAIL SHEET AND MAINTENANCE OF TRAFFIC SHEETS

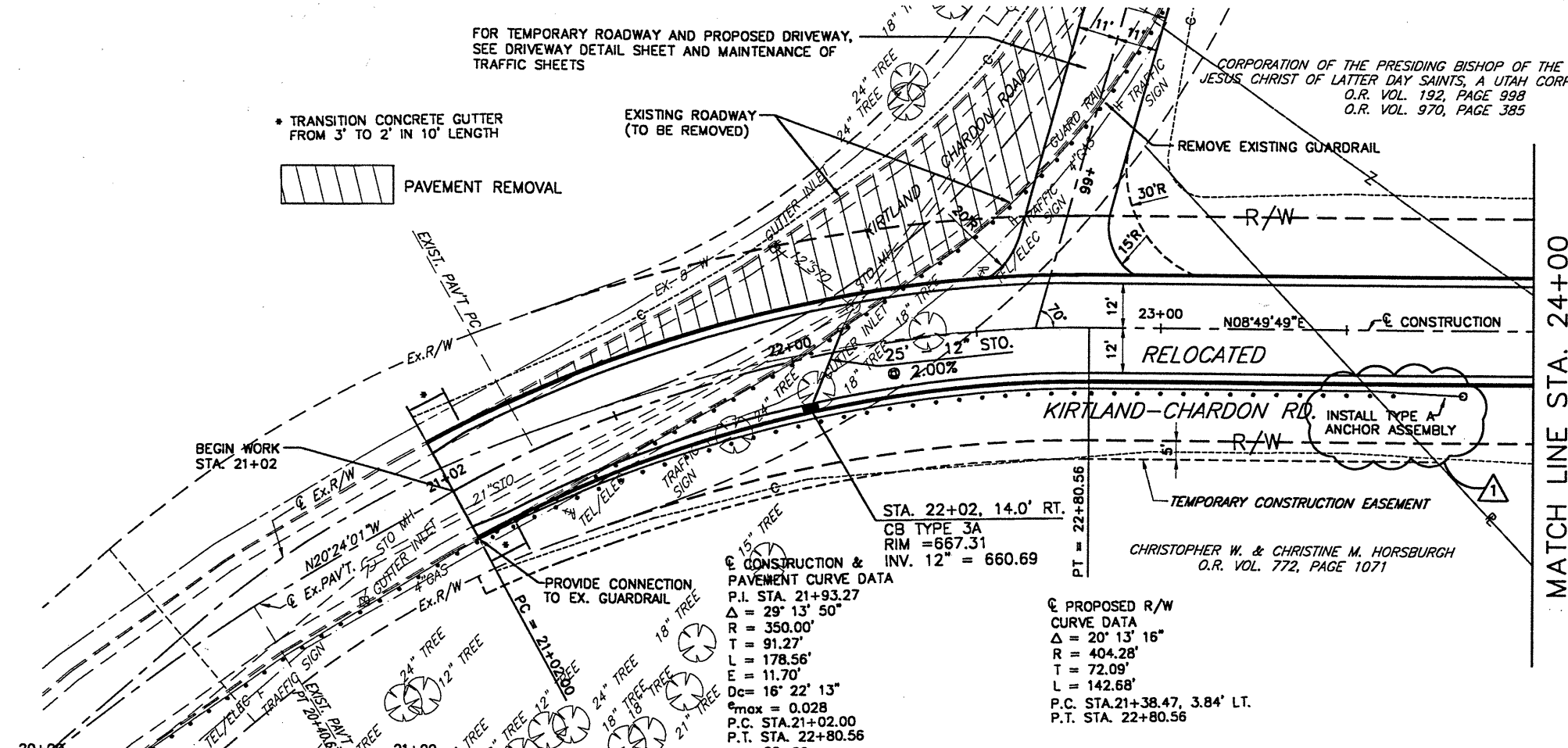
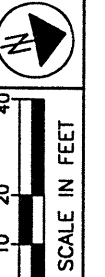
* TRANSITION CONCRETE GUTTER FROM 3' TO 2' IN 10' LENGTH

PAVEMENT REMOVAL

EXISTING ROADWAY (TO BE REMOVED)

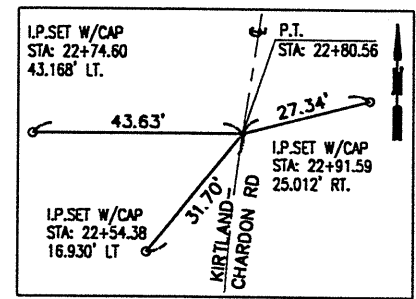
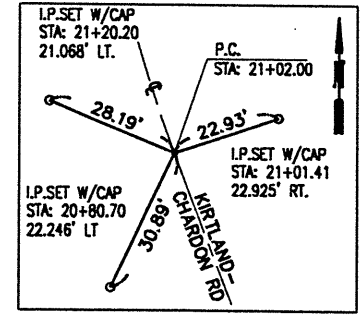
CORPORATION OF THE PRESIDING BISHOP OF THE CHURCH OF JESUS CHRIST OF LATTER DAY SAINTS, A UTAH CORPORATION SOLE
O.R. VOL. 192, PAGE 998
O.R. VOL. 970, PAGE 385

BENCHMARK NO. 2
CHISLED SQ. SET ON CONCRETE BASE (SW CORNER) OF O.B.T. BOX AT NE CORNER OF GARFIELD ROAD AND S.R. 615
STA: 30+55.68, 45.52' R
ELEV. = 650.32



CONSTRUCTION & PAVEMENT CURVE DATA
P.I. STA. 21+93.27
 $\Delta = 29^\circ 13' 50''$
R = 350.00'
T = 91.27'
L = 178.56'
E = 11.70'
Dc = 16' 22' 13"
 $e_{max} = 0.028$
P.C. STA. 21+02.00
P.T. STA. 22+80.56
22+00

PROPOSED R/W CURVE DATA
 $\Delta = 20^\circ 13' 16''$
R = 404.28'
T = 72.09'
L = 142.68'
P.C. STA. 21+38.47, 3.84' LT.
P.T. STA. 22+80.56



Station	Elevation	Notes
20+00	677.4	MEET EXISTING STA. 21+02 EL. 677.39
21+00	672.4	EX. STO MH STA. 20+73±, RT. RIM 680.05 21" 671.35 N & S
21+02	668.0	EX. STO IB STA. 22+01.78, 30.9 LT. RIM 666.58 12" 660.98 (ADJUSTED TO GRADE)
21+02	668.0	EX. STO IB STA. 22+14.81, 5.7' LT. RIM 666.29 12" 660.19 (ABANDON)
21+02	668.0	EX. STO MH STA. 22+18.52, 11.05 LT. RIM 666.23 21" 656.45 N & S (RECONSTRUCT TO GRADE)
22+00	666.0	400.00' VC L.P. ELEV = 654.49 L.P. STA = 25+19.40 PVI STA = 23+42.66 PVI ELEV = 653.33 A.D. = 10.61 K = 37.68
23+00	655.9	EXISTING PROFILE GRADE
24+00	651.4	0.62%

No.	REVISIONS	By	Date
1	Change Type "T" To Type "A"	RLB	2/28/00

RELOCATED KIRTLAND-CHARDON RD. PLAN AND PROFILE
STA. 20+00 TO STA. 24+00

LAK - 615 - 0.00

41
95

DATE: 10-15-99 - TIME: 08:38 - H: CT\97260\SDSK\PP4.DWG