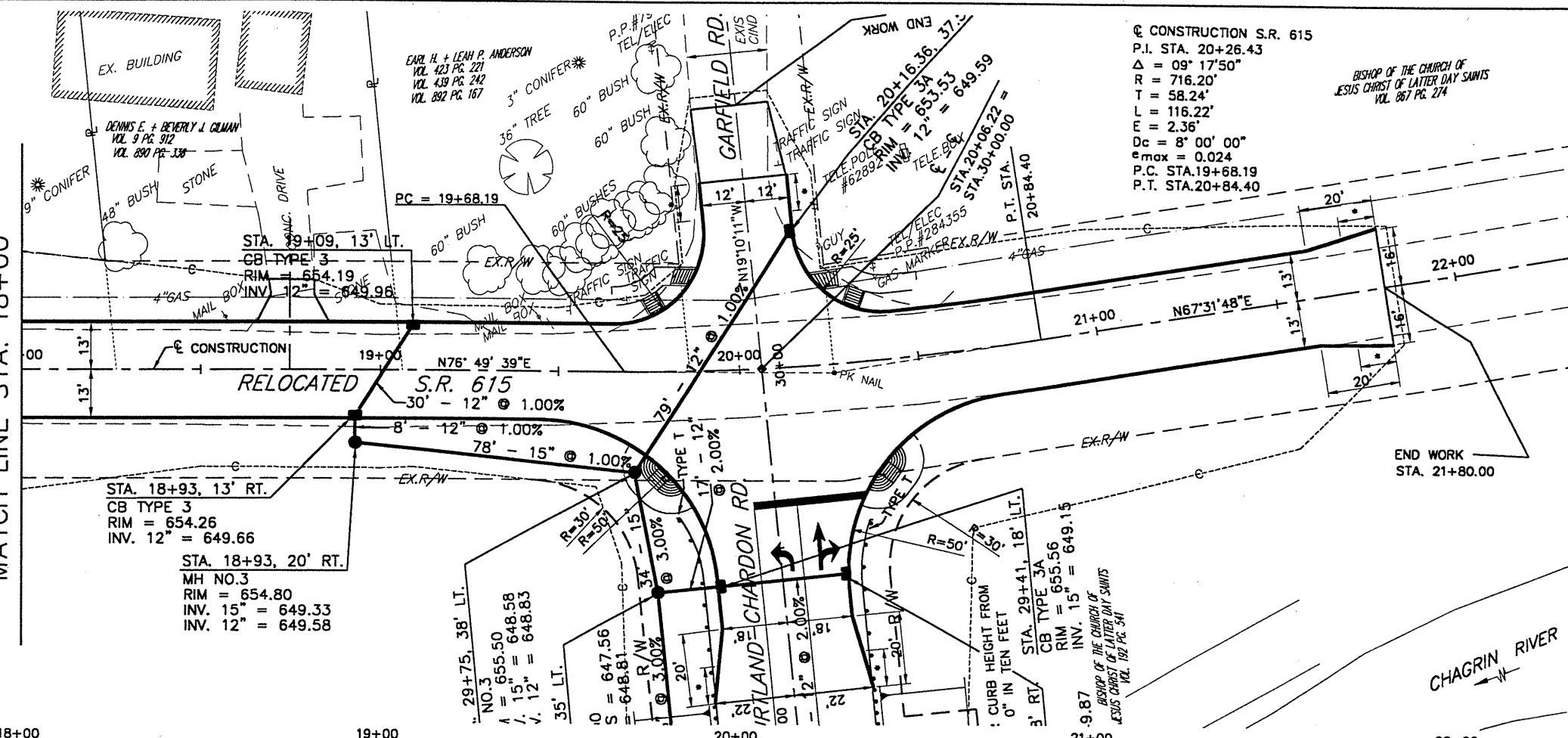


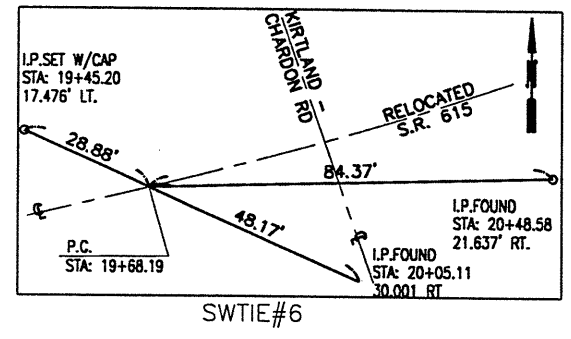
DATE: 10-15-99 - TIME: 13:32 - H:\CT\97260\SDSK\PP3.dwg

MATCH LINE STA. 18+00

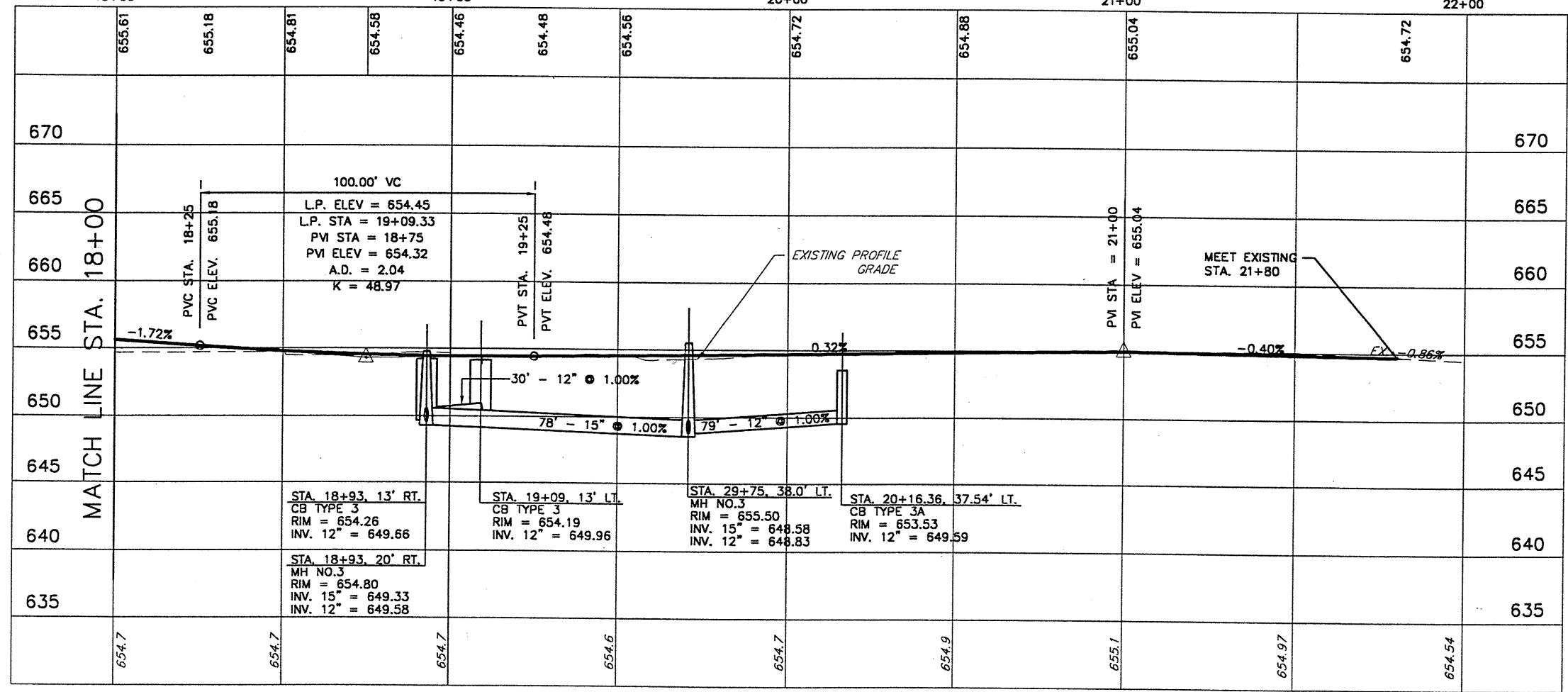


CONSTRUCTION S.R. 615
 P.I. STA. 20+26.43
 $\Delta = 09^\circ 17' 50''$
 $R = 716.20'$
 $T = 58.24'$
 $L = 116.22'$
 $E = 2.36'$
 $D_c = 8' 00'' 00''$
 $e_{max} = 0.024$
 P.C. STA. 19+68.19
 P.T. STA. 20+84.40

BENCHMARK NO. 2
 CHISLED SQ. SET ON CONCRETE
 BASE (SW CORNER) OF O.B.T. BOX
 AT NE CORNER OF GARFIELD ROAD
 AND S.R. 615
 STA: 30+55.68, 45.52' R
 ELEV. = 650.32



	18+00	19+00	20+00	21+00	22+00
	655.61	655.18	654.81	654.58	654.46
670					
665					
660					
655					
650					
645					
640					
635					
	654.7	654.7	654.6	654.7	654.9



RELOCATED S.R. 615 PLAN AND PROFILE
 STA. 18+00 TO STA. 22+00

LAK - 615 - 0.00

19
95