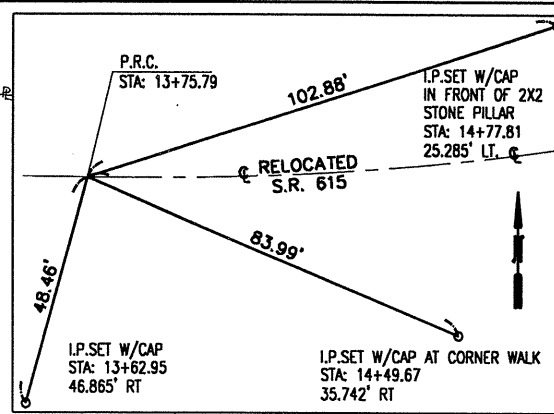
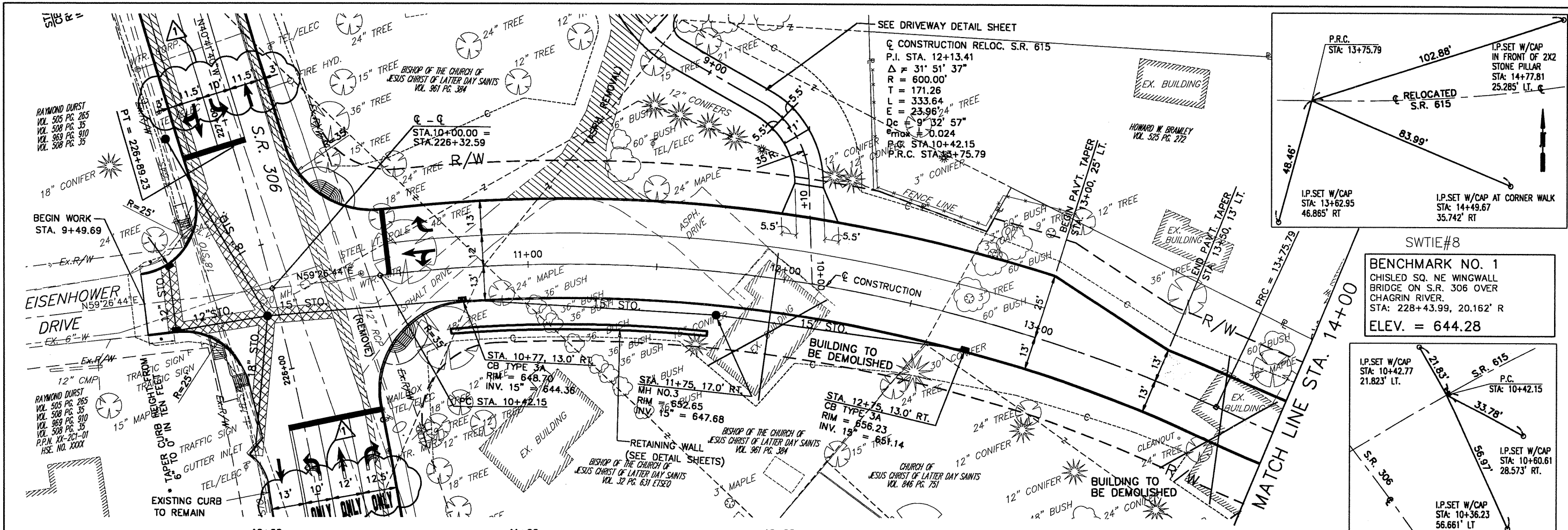
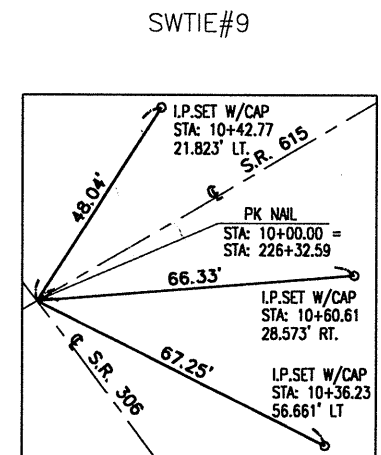
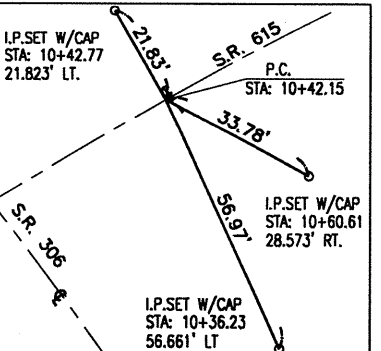


DATE: 4-13-2000 - TIME: 13:26 - H:\et\97260\sdsk\pp1.dwg



SWTIE#8
BENCHMARK NO. 1
 CHISLED SQ. NE WINGWALL
 BRIDGE ON S.R. 306 OVER
 CHAGRIN RIVER.
 STA: 228+43.99, 20.162' R
 ELEV. = 644.28



Station	Elevation	Notes
10+00	646.46	
10+26	648.26	
11+00	649.64	
11+39	650.39	
11+76	651.26	
12+00	652.23	
12+32	653.32	
12+50	655.62	
13+00	656.70	
13+65	657.65	
14+00	658.47	
14+15	659.15	
14+71	659.71	
14+13	660.13	

Station	Elevation	Notes
670		
665		
660		STA. 226+22.50, 4.50' LT.
655		MEET EXISTING PAVEMENT
650		STA. 9+74.00 ELEV. 645.17
645		
640		
635		

RELOCATED S.R. 615 PLAN AND PROFILE
 STA. 10+00 TO STA. 14+00
 LAK - 615 - 0.00
 17
 95

No.	REVISIONS	By	Date
1	Lane Widths	RLB	4/12/00