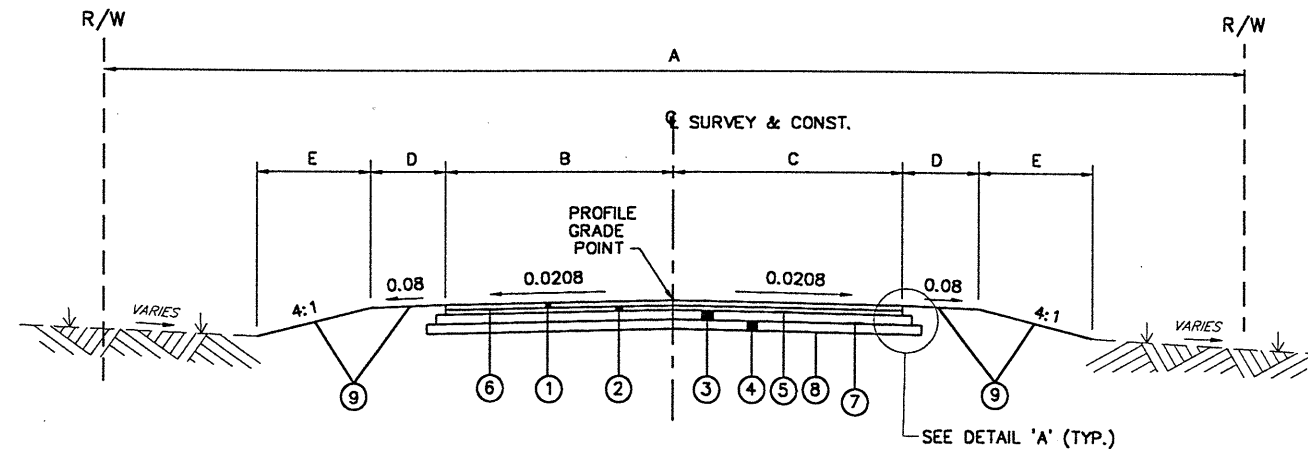
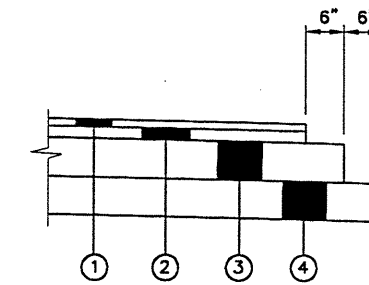


TYPICAL SECTION



NORMAL SECTION
(OVERLOOK DRIVE/ GARFIELD ROAD)

SIDESTREETS	A	B	C	D	E
OVERLOOK ROAD (STA. 10+13 TO STA. 11+60.69)	60'	VARIES 10' TO 7.5'	VARIES 10' TO 7.5'	3'	VARIES
GARFIELD ROAD (STA. 30+13 TO STA. 30+73)	40'	VARIES 10' TO 11.5'	VARIES 10' TO 11.5'	3'	VARIES



DETAIL 'A'

LEGEND

- ① ITEM 448 - 1 1/4" ASPHALT CONCRETE SURFACE COURSE, TYPE 1, PG64-22
- ② ITEM 448 - 1 3/4" ASPHALT CONCRETE INTERMEDIATE COURSE, TYPE 2, PG64-22
- ③ ITEM 301 - 6" BITUMINOUS AGGREGATE BASE, PG64-22
- ④ ITEM 304 - 6" AGGREGATE BASE
- ⑤ ITEM 407 - TACK COAT
- ⑥ ITEM 407 - TACK COAT FOR INTERMEDIATE COURSE
- ⑦ ITEM 408 - PRIME COAT
- ⑧ ITEM 203 - SUBGRADE COMPACTION
- ⑨ ITEM 659 - SEEDING AND MULCHING

DATE: 10-18-99 - TIME: 12:43 - H:\CT\97260\SDSK\97260typ.dwg

TYPICAL SECTIONS

LAK-615-0.00