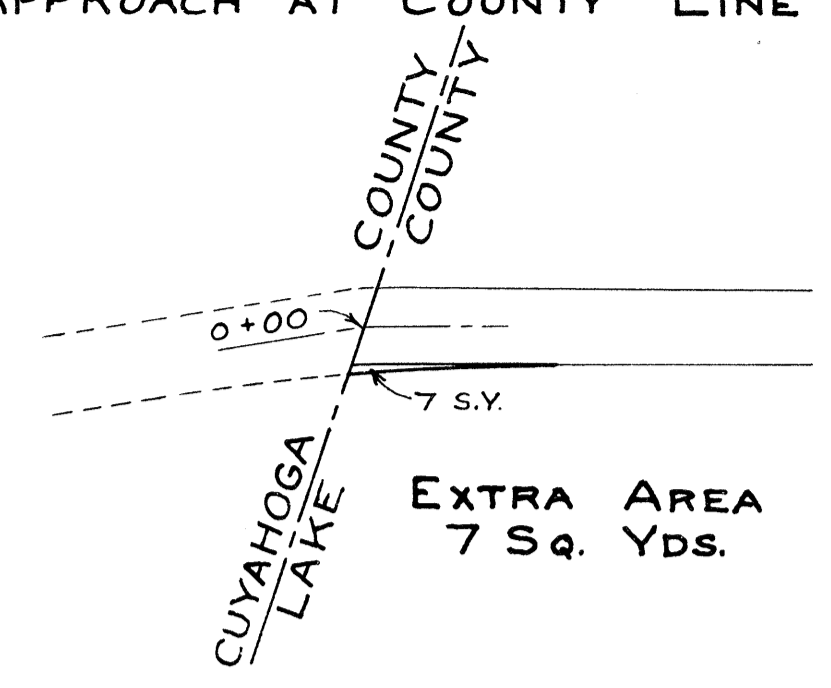


LAKE COUNTY
S.H. 34 - SEC. A, B,
& C (PT.)

APPROACH AT COUNTY LINE



EXTRA AREA
7 Sq. Yds.

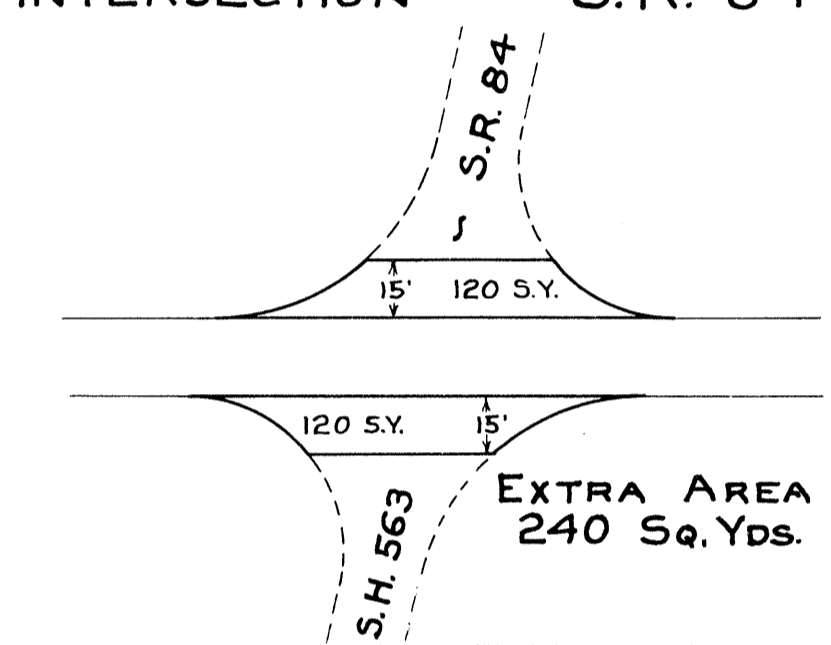
P.I. STA.
5 + 71.40
Δ = 7° 44' 30"
D = 4° - 20'
T = 89.48
L = 180.00

STA. 22 + 63.89
S.H. 563 - S.R. 84

P.I. STA.
22 + 63.89
DEF. = 0° - 19' RT.

P.I. STA.
40 + 28.75
Δ = 17° 03' 30"
D = 12° - 00'
T = 71.74
L = 142.41
EXTRA AREA 74 S.Y.

INTERSECTION S.R. 84



EXTRA AREA
240 Sq. Yds.

P.I. STA.
67 + 09.51
Δ = 2° 31' 30"
D = 1° - 00'
T = 126.27
L = 252.52

P.I. STA. 74 + 14.73
Δ = 4° 32' 30"
D = 2° - 00'
T = 113.60
L = 227.09

P.I. STA. 80 + 35.07
Δ = 2° - 50'
D = 2° - 00'
T = 70.85
L = 141.67

ROCKEFELLER ROAD
STA. 80 + 35.1

END SHEET STA. 95 + 00

BEGIN PROJECT
STA. 0 + 00

EXTRA AREAS

STATION	ITEM	EX. AREA SQ. YDS.
0+00	APPROACH	7
22+63.89	INTERSECTION	240
40+28.75	WIDENED CURVE	74
TOTAL		321

