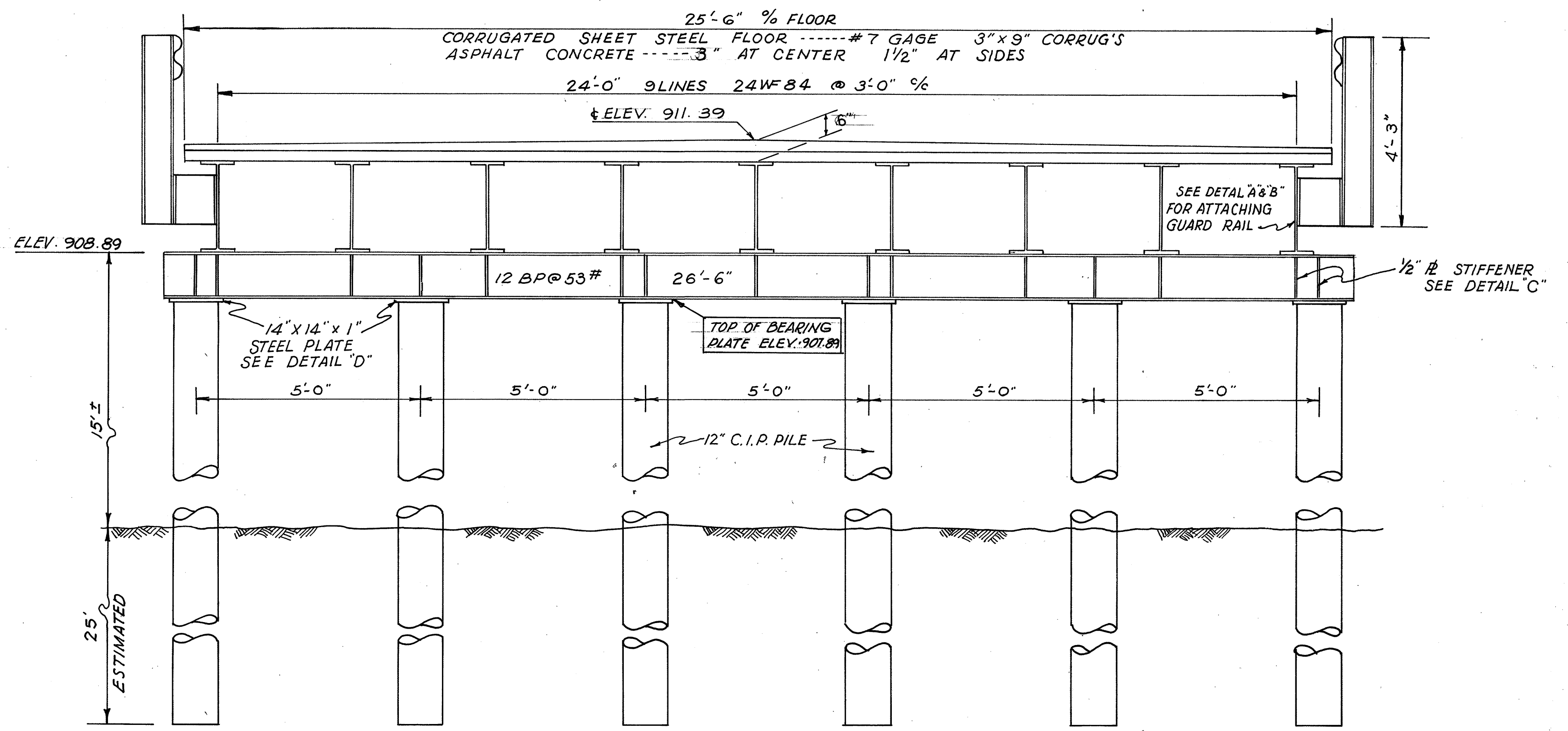
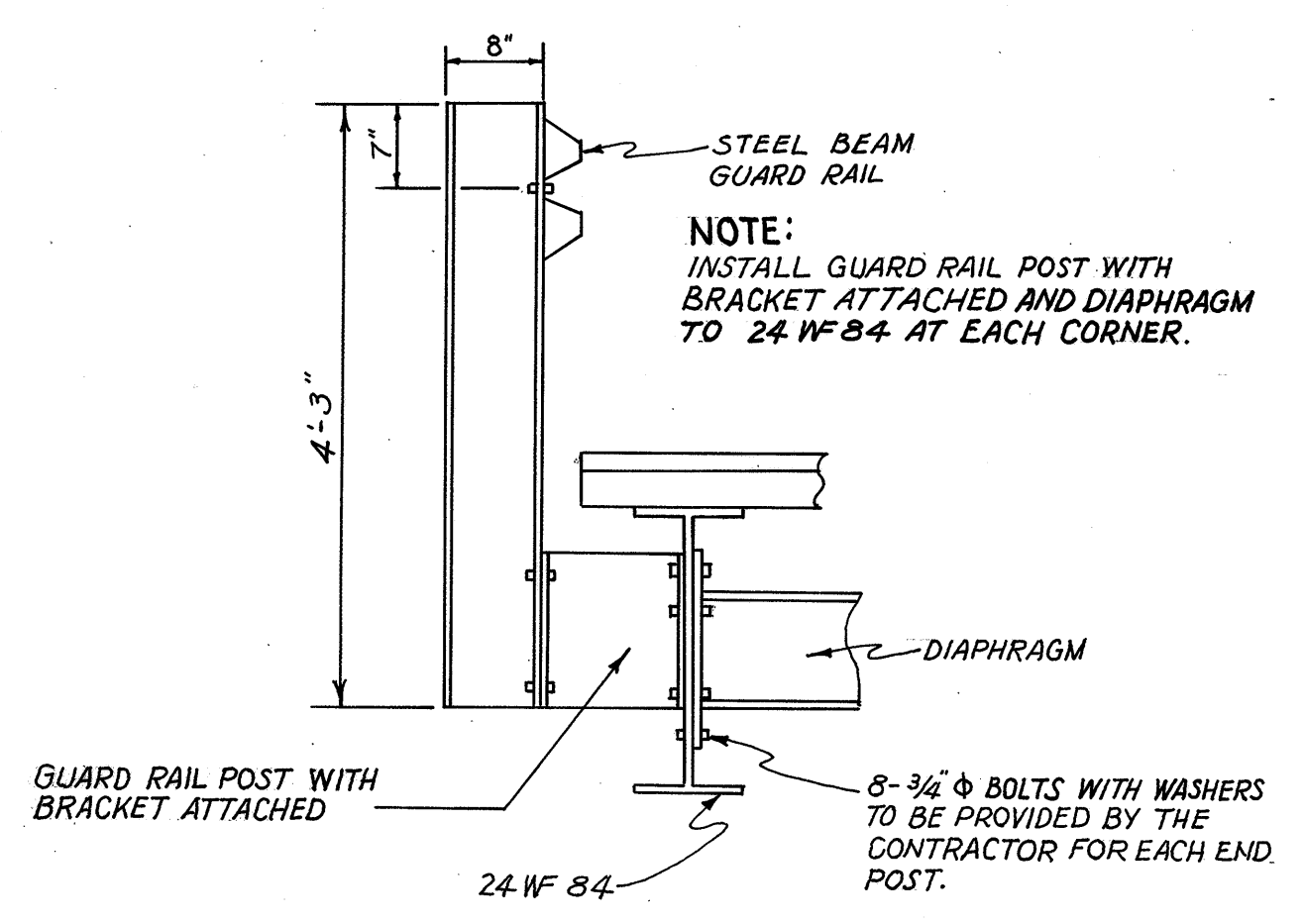


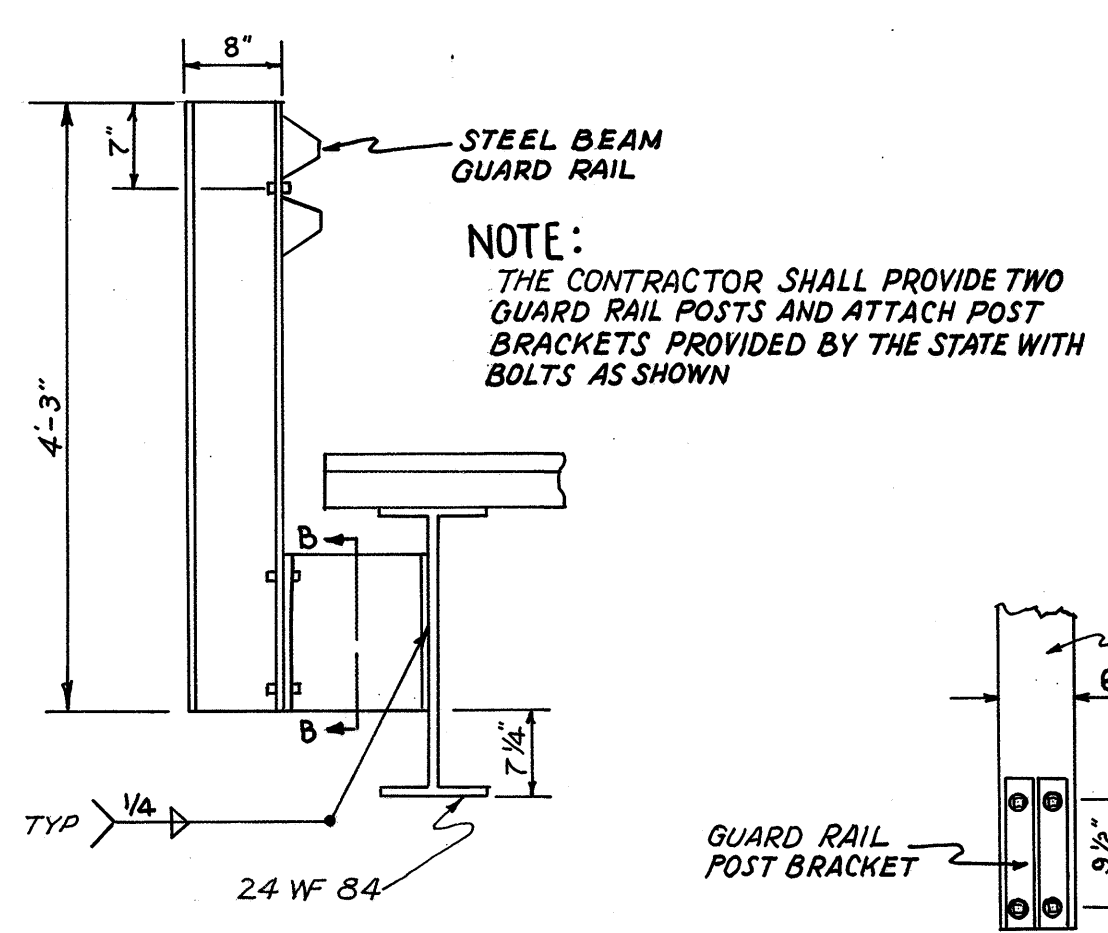
**PLAN**  
SCALE 1/4" = 1'-0"



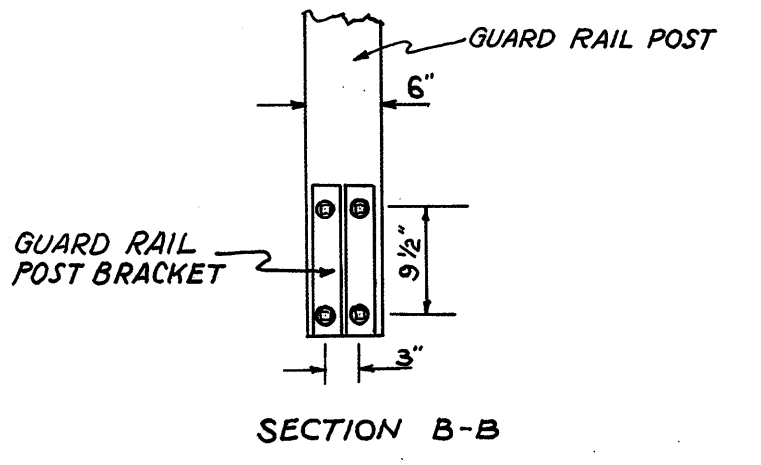
**ELEVATION**  
SCALE 1/2" = 1'-0"



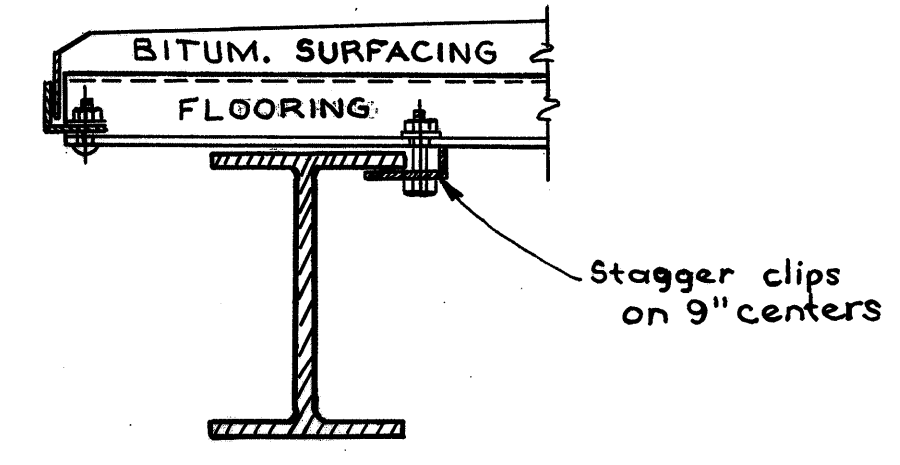
**DETAIL "A"**  
**END POST ASSEMBLY**  
SCALE 3/4" = 1'-0"



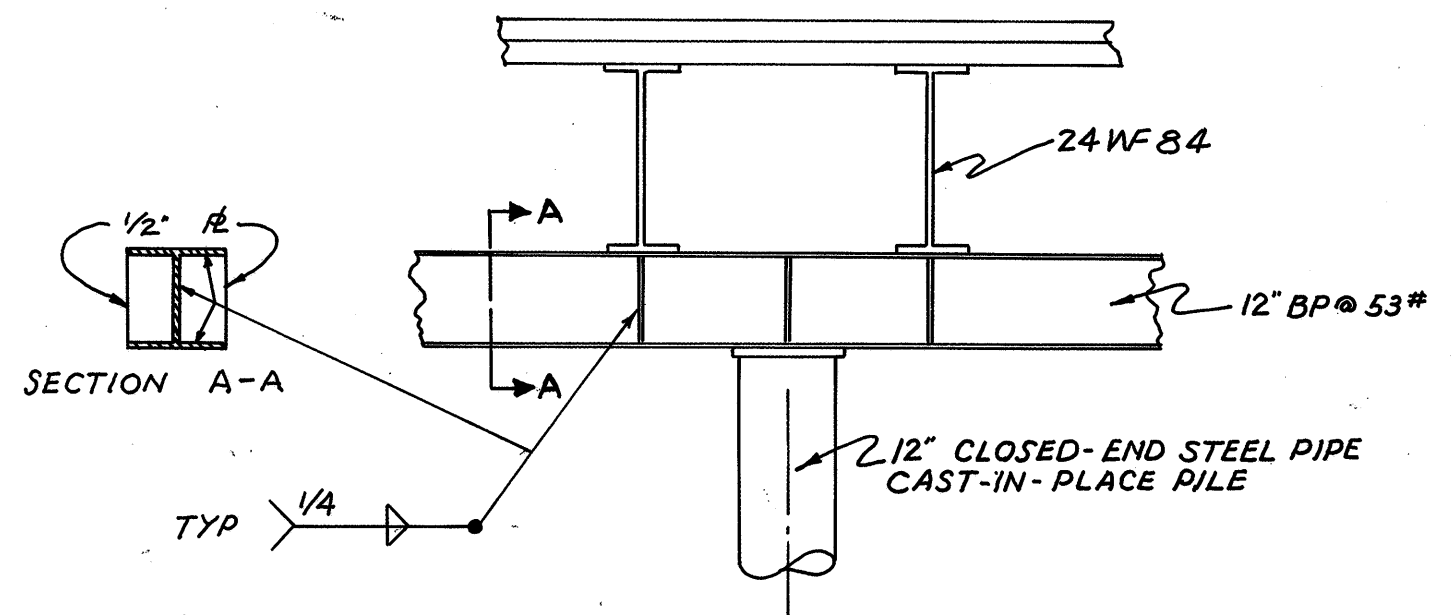
**DETAIL "B"**  
**INTERIOR POST ASSEMBLY**  
SCALE 3/4" = 1'-0"



SECTION B-B

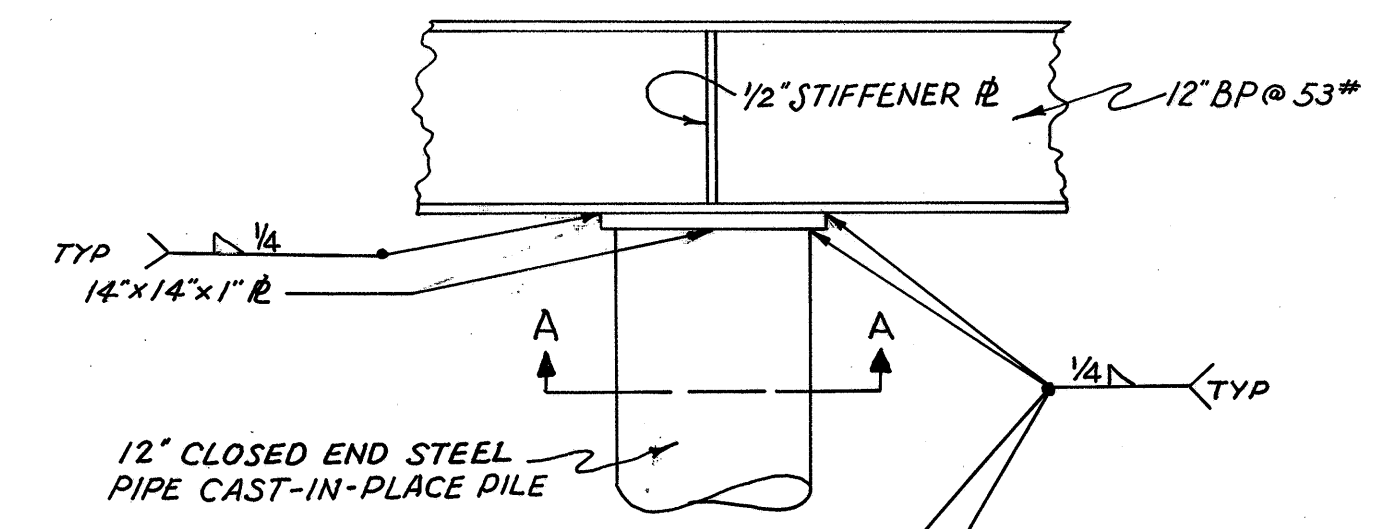


**DETAIL "E"**  
**DIAPHRAGM**  
SCALE 3/4" = 1'-0"



STIFFENER PLATES SHALL BE A 1/2" STEEL PLATE WELDED IN THE BRIDGE SEAT ON EACH SIDE OF WEB OVER EACH PILE AND UNDER EACH STRINGER

**DETAIL "C" STIFFENER PLATES**  
SCALE 1/2" = 1'-0"



**DETAIL "D" BEARING PLATE**  
SCALE 1" = 1'-0"

NOTE: THE STATE SHALL PROVIDE ALL 28 DIAPHRAGMS THE CONTRACTOR SHALL FURNISH ALL 3/4" φ BOLTS FOR ERECTION.

**NOTE: "A"**  
THE CONTRACTOR SHALL DRILL HOLES TO ACCOMMODATE THE DIAPHRAGMS (SEE DETAIL "E") ON ONE BEAM WHICH DOES NOT HAVE THE REQUIRED HOLES. THE COST FOR ALL LABOR MATERIALS AND EQUIPMENT SHALL BE INCLUDED IN THE UNIT PRICE BID FOR ITEM 513 STRUCTURAL STEEL.