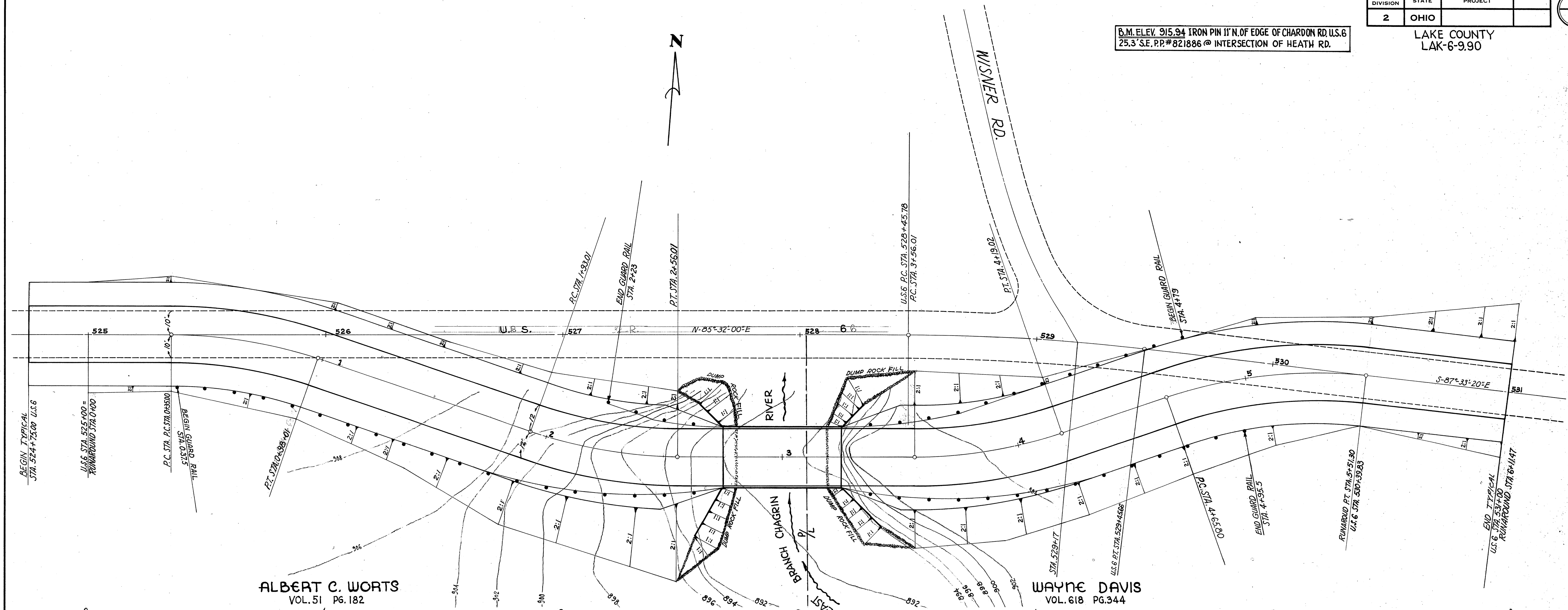


FED. RD. DIVISION	STATE	PROJECT
2	OHIO	

3
8

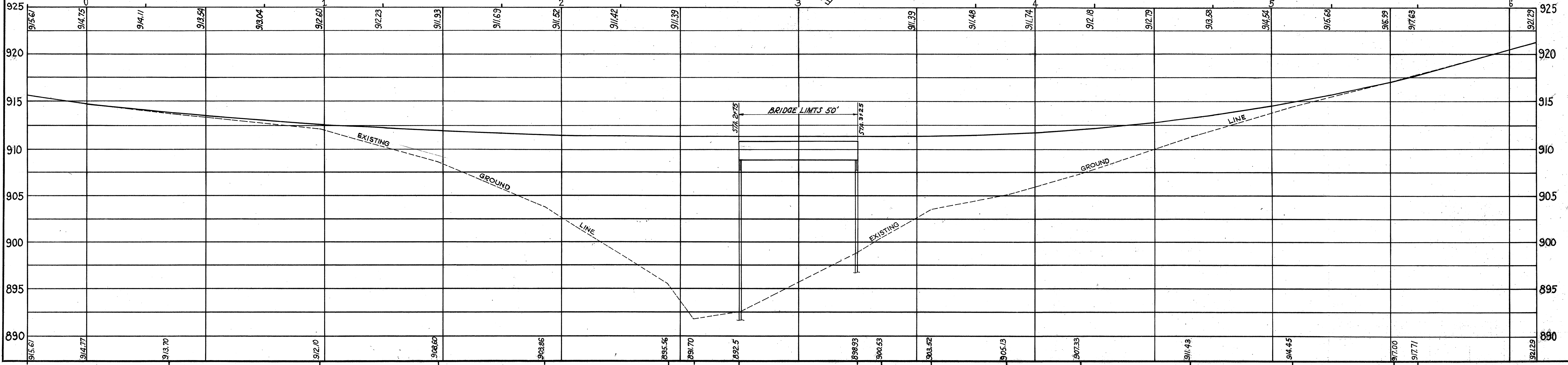
B.M. ELEV. 915.94 IRON PIN 11' N. OF EDGE OF CHARDON RD. U.S. 6
25.3' S.E. P.P. # 821886 @ INTERSECTION OF HEATH RD.

LAKE COUNTY
LAK-6-9.90



ALBERT C. WORTS
VOL. 51 PG. 182

WAYNE DAVIS
VOL. 618 PG. 344



SITE PLAN