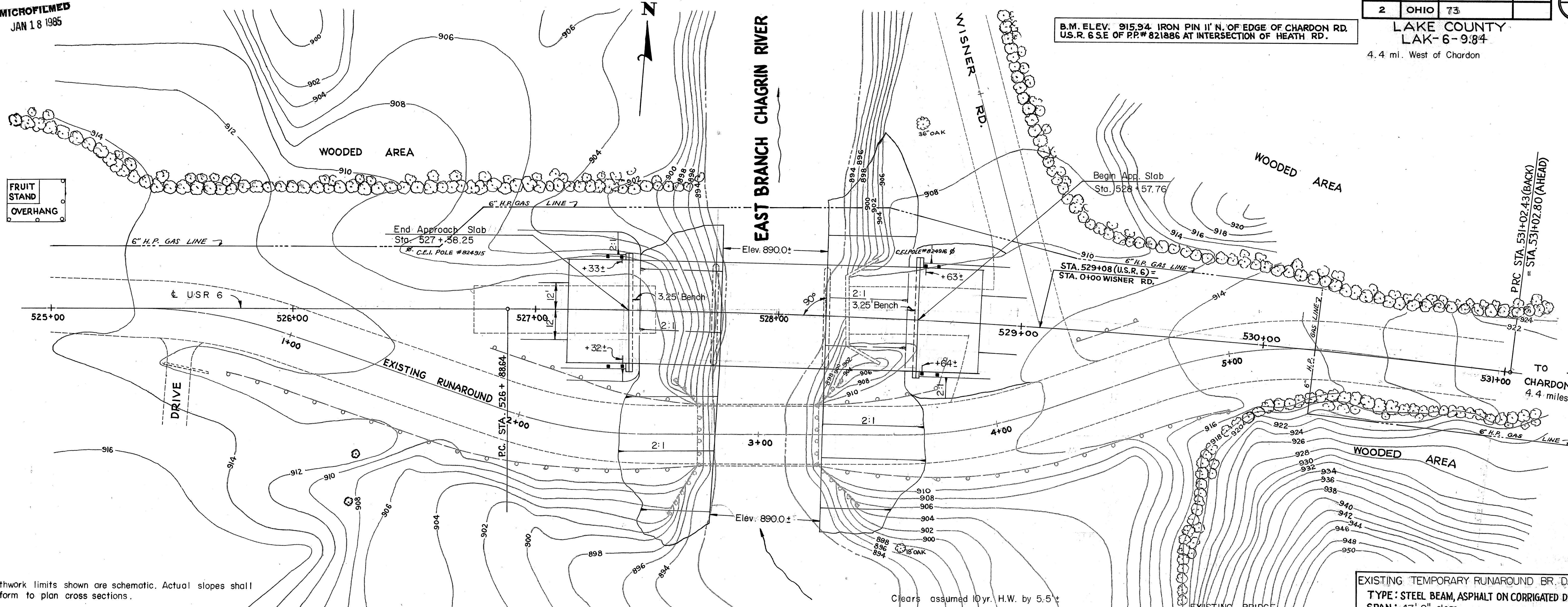


MICROFILMED
JAN 18 1985

FED. RD. DIVISION	STATE	PROJECT	
2	OHIO	73	

LAKE COUNTY
LAK-6-9:84
4.4 mi. West of Chardon

B.M. ELEV. 915.94 IRON PIN 11' N. OF EDGE OF CHARDON RD.
U.S.R. 6 S.E. OF PP.# 821886 AT INTERSECTION OF HEATH RD.



Earthwork limits shown are schematic. Actual slopes shall conform to plan cross sections.

DRAINAGE AREA = 20.9 sm
DESIGN DISCHARGE
Q₁₀ = 3400 cfs (estimated)
Q₂₅ = 4250 cfs (estimated)

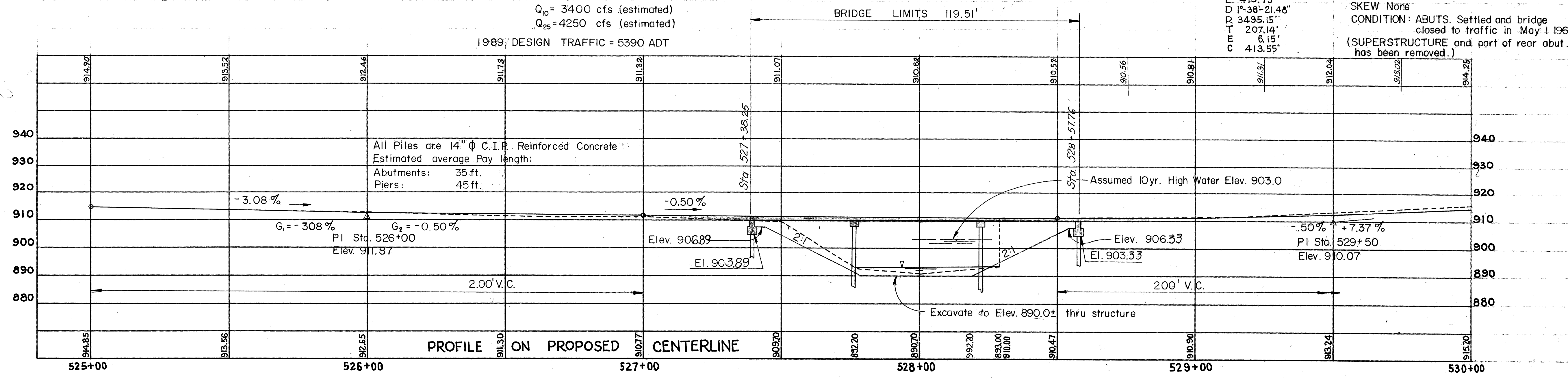
CURVE DATA
Δ 6°-47'-00"
L 413.79
D 1°-38'-21.48"
R 3495.15'
T 207.14'
E 6.15'
C 413.55'

TYPE: Concrete Girder
SPAN: 60'
RDWY 23'-5" f/f curbs
SKEW None
CONDITION: ABUTS. Settled and bridge closed to traffic in May 1969 (SUPERSTRUCTURE and part of rear abut. has been removed.)

EXISTING TEMPORARY RUNAROUND BR. DATA
TYPE: STEEL BEAM, ASPHALT ON CORRUGATED DECK
SPAN: 47'-9" clear
ROADWAY: 24'
LOADING: HS-15-44
SKEW: 0°
CONDITION: SUPERSTRUCTURE GOOD, SUBSTRUCTURE FAIR.
DATE BUILT 1970

TYPE: Continuous reinforced concrete slab on capped pile abutments and piers.
SPANS: 36'-45" 36'
ROADWAY: 44'-0" f/f guardrail
LOADING: HS 20-44
SKEW: 0°
SURFACE COURSE: 2 1/2" Asphalt Concrete
APPROACH SLABS: AS-1-72 (25' long)
ALIGNMENT: 1° 38'-21.48" Curve Rt.
SUPERELEVATION: .0156 1/4

STATE OF OHIO
DEPARTMENT OF HIGHWAYS
BUREAU OF BRIDGES
SITE PLAN
BRIDGE NO. LAK-6-0990
OVER THE EAST BRANCH OF THE CHAGRIN RIVER U.S.R. 6
LAKE CO. STA. 527+38.25
SCALE (1" = 20') 528+57.76



PRESENT TOPO		PROPOSED WORK			
SURVEYED	DRAWN	DESIGNED	DRAWN	CHECKED	REVIEWED
	FPK	FPK	NJB		G.C.S.

BFG 8-25-72

SITE PLAN