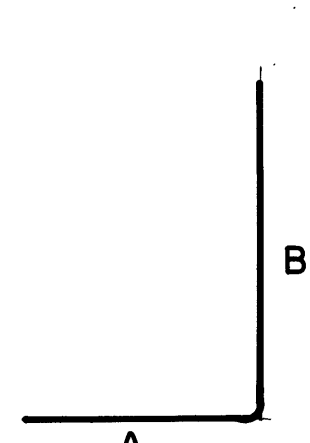
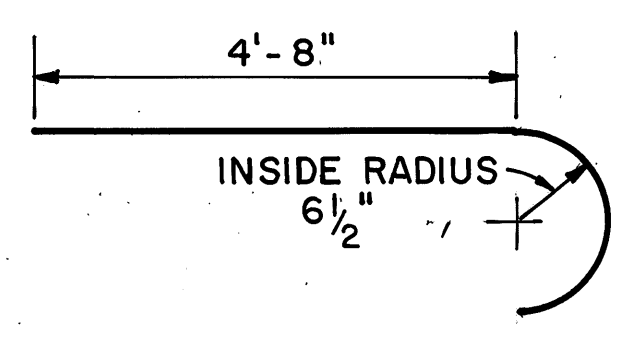


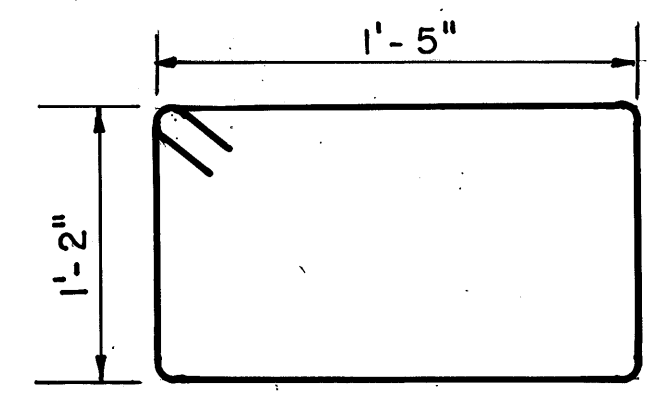
TYPE 1



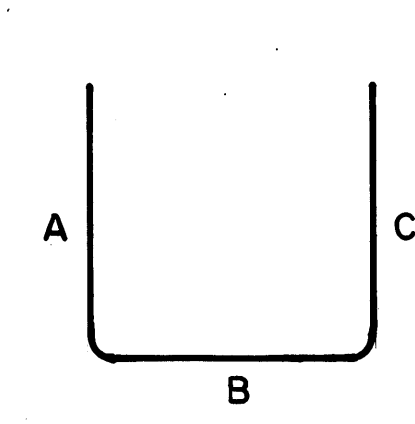
TYPE 2



TYPE 3



TYPE 4



TYPE 5

NOTE: THE PREFIX "E" DENOTES EPOXY COATED BARS

WEST ABUTMENT										EAST ABUTMENT										SUPERSTRUCTURE									
MARK	NO.	LENGTH	WEIGHT	TYPE	A	B	C	D	E	MARK	NO.	LENGTH	WEIGHT	TYPE	A	B	C	D	E	MARK	NO.	LENGTH	WEIGHT	TYPE	A	B	C	D	E
A 801	20	6'-1"	325	1	1'-6"	3'-3"	1'-6"			A 801	19	6'-1"	309	1	1'-6"	3'-3"	1'-6"			ES 601	544	28'-2"	23,015	STR.					
A 601	4	13'-10"	83	STR.						A 605	32	7'-2"	344	5	3'-4"	10"	3'-4"			ES 602	2 SERIES OF 20	27'-10" TO 5'-11"*	1,014			* 1'-1 7/8" INCREMENTS			
A 602	4	14'-10"	89							A 606	1	15'-0"	23	STR.						ES 603	8	4'-9"	57						
A 603	1	8'-6"	13							A 607	3	18'-4"	83							S 604	8	4'-9"	57	STR.					
A 604	1	8'-0"	12	STR.						A 608	1	13'-3"	20							S 501	544	28'-2"	15,982	STR.					
A 605	33	7'-2"	355	5	3'-4"	10"	3'-4"			A 609	1	14'-3"	21							S 502	2 SERIES OF 20	27'-10" TO 5'-11"*	704			* 1'-1 7/8" INCREMENTS			
A 501	8	30'-0"	250	STR.						A 610	1	9'-3"	14							S 503	364	30'-0"	11,390						
A 502	4	13'-5"	56							A 611	3	15'-4"	69	STR.						S 504	28	10'-0"	292	STR.					
A 503	4	14'-5"	60							A 520	6	30'-0"	188	STR.						ES 401	425	30'-0"	8,597	STR.					
A 504	4	19'-0"	79							A 521	2	25'-0"	52							ES 402	39	5'-8"	125	STR.					
A 505	1	9'-3"	10							A 522	2	6'-0"	13							ES 403	96	39'-0"	2,501	STR.					
A 506	1	13'-6"	14							A 523	3	14'-11"	47							TOTALS =		35,309	EPOXY COATED						
A 507	1	1'-9"	2							A 524	2	9'-0"	19									28,425	NORMAL						
A 508	1	5'-0"	5							A 525	2	6'-6"	14																
A 509	1	6'-0"	6							A 526	1	13'-10"	14																
A 510	1	4'-3"	4							A 527	1	11'-3"	12																
A 511	2	7'-0"	15							A 528	1	1'-9"	2	STR.															
A 512	2	3'-6"	7	STR.						A 529	1	5'-10"	6	3															
EA 513	8	4'-1"	34	STR.						A 530	2	7'-8"	16	STR.															
A 514	10	5'-3"	55	2	2'-4"	3'-0"				A 531	2 SERIES OF 5	4'-4" TO 9'-1"*	70																
A 515	1	5'-8"	6	STR.						A 532	2	8'-6"	18																
A 516	1	7'-11"	8	STR.						A 533	10	10'-6"	110																
EA 401	4	5'-4"	14	4						A 534	2	7'-8"	16																
TOTALS =			1,454	NORMAL						A 535	2	7'-3"	15																
			48	EPOXY COATED						A 536	2	9'-3"	19																
										A 537	1	14'-7"	15																
										A 538	2	11'-6"	24																
										A 539	2 SERIES OF 7	3'-11" TO 10'-5"*	105																
										A 540	10	11'-7"	121																
										A 541	3	10'-11"	34																
										A 542	3	17'-11"	56																
										A 543	1	17'-7"	18																
										A 544	2	8'-3"	17																
										A 545	1	3'-1"	3																
										A 546	1	6'-3"	7																
										A 547	4	18'-3"	76	STR.															
										EA 548	8	4'-1"	34	STR.															
										A 549	1	9'-8"	10	STR.															
										A 550	15	5'-3"	82	2	2'-4"	3'-0"													
										A 551	4	4'-0"	17	STR.															
										EA 401	4	5'-4"	14	4															
										TOTALS =		2,099	NORMAL																
												48	EPOXY COATED																

REINFORCING STEEL SAMPLES: Refer to CMS Sections 106.03, 700, 709.01 through 709.05 and 709.08. Sufficient additional reinforcing steel shall be provided for sampling. Random samples shall be replaced in the structures by the additional steel, spliced in accordance with 509.08

LAKE INC. ENGINEERING 6/6  
WICKLIFFE, OHIO

**REINFORCING STEEL**  
BRIDGE NO. LAK-6-0461  
S.R. 6 OVER THE CHAGRIN RIVER  
LAKE COUNTY S.R. 6

DESIGNED	DRAWN	TRACED	CHECKED	REVIEWED	DATE	REVISED
MM	MM	P.P.	P.P.	JT	11/5/02	