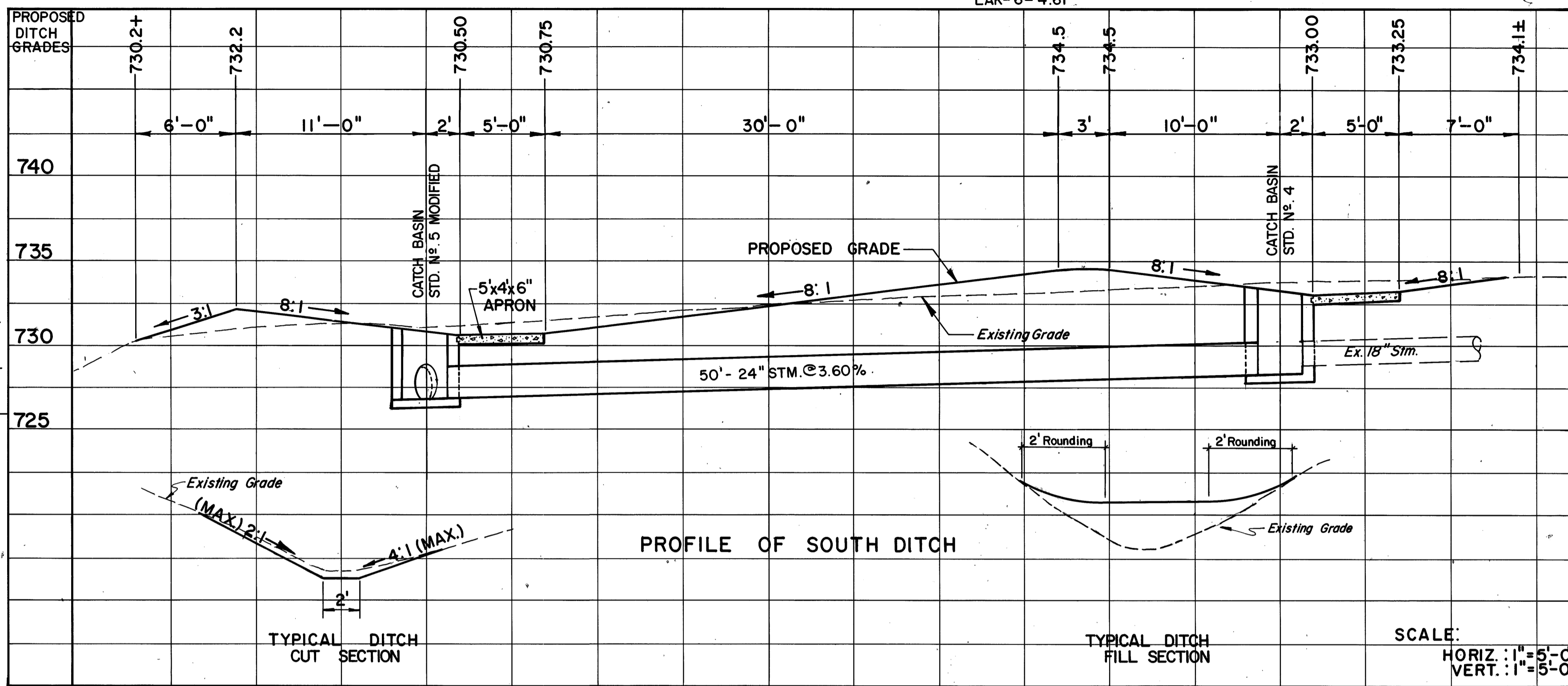
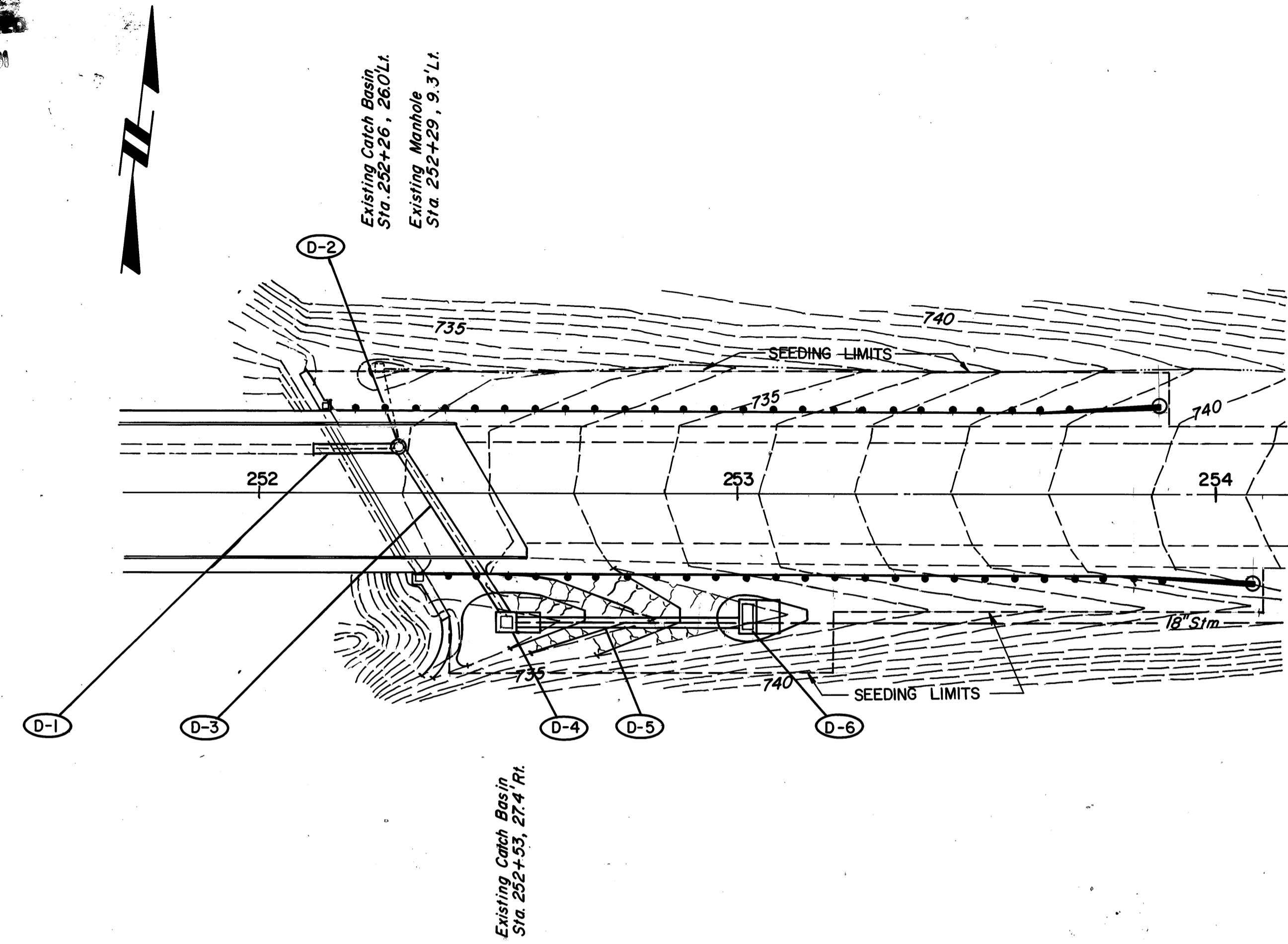


NOV 8 1981

DATE: _____
 SURVEYED: _____
 PLANNED: _____
 CHECKED: _____
 NO. _____

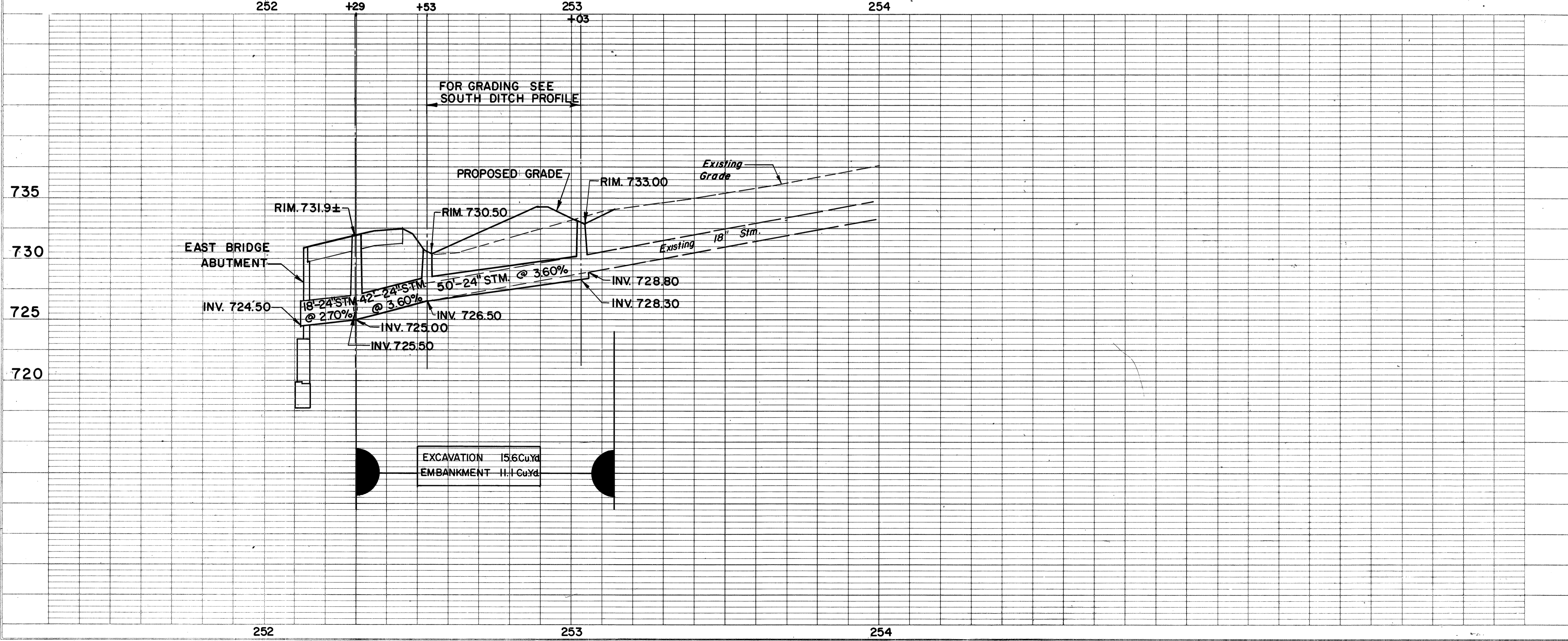


CATCH BASIN STD. No. 5, MODIFIED
 THE ONLY CHANGE IS THE SIZE OF THE CONCRETE APRON. USE THE SIZE SHOWN ABOVE.

NOTE:
 THE 24" CONDUIT TYPE B, AS PER PLAN IS TO BE DUCTILE IRON PIPE CLASS 52

| REF. | LOCATION | L.F. | E.A. | E.A. |
|--------|--------------------------------------|------|------|------|
| 604 | CATCH BASIN STANDARD No. 5, MODIFIED | | | |
| 604 | MANHOLE, STANDARD No. 1 | | | |
| 604 | CATCH BASIN, STANDARD No. 4 | | | |
| 603 | 24" CONDUIT TYPE B, AS PER PLAN | 18 | 42 | |
| 603 | 24" CONDUIT TYPE C | 50 | | |
| TOTALS | | 50 | 60 | |

DATE: _____
 SURVEYED: _____
 PLANNED: _____
 CHECKED: _____
 NO. _____



| ROADWAY | LOCATION | C.Y. | TOTALS |
|---------|-----------------------------------|------|--------|
| 203 | EMPAVEMENT | 12 | 12 |
| 203 | EXCAVATION NOT INCL. EMB. CONSTR. | 25 | 41 |
| TOTALS | | | 53 |

| REF. | LOCATION | L.F. | E.A. | E.A. |
|--------|-----------------------|------|------|------|
| D-1 | STA. 252+11 TO 252+29 | | | |
| D-3 | STA. 252+29 TO 252+53 | 42 | | |
| D-5 | STA. 252+53 TO 253+03 | 50 | | |
| D-2 | STA. 252+29 | | | |
| D-4 | STA. 252+53 | | | |
| D-6 | STA. 253+03 | | | |
| TOTALS | | 142 | | |

LAKE INC. ENGINEERING
 WICKLIFFE, OHIO

DRAINAGE DETAILS
 U. S. ROUTE 6 OVER
 THE CHAGRIN RIVER
 LAKE COUNTY, OHIO

SCALE: _____ DATE: _____

| DESIGNED | DRAWN | TRACED | CHECKED | REVIEWED | DATE | REVISED |
|----------|-------|--------|---------|----------|---------|---------|
| DA | DA | DA | Bh | WGP | 7/13/83 | |

DRAINAGE DETAILS