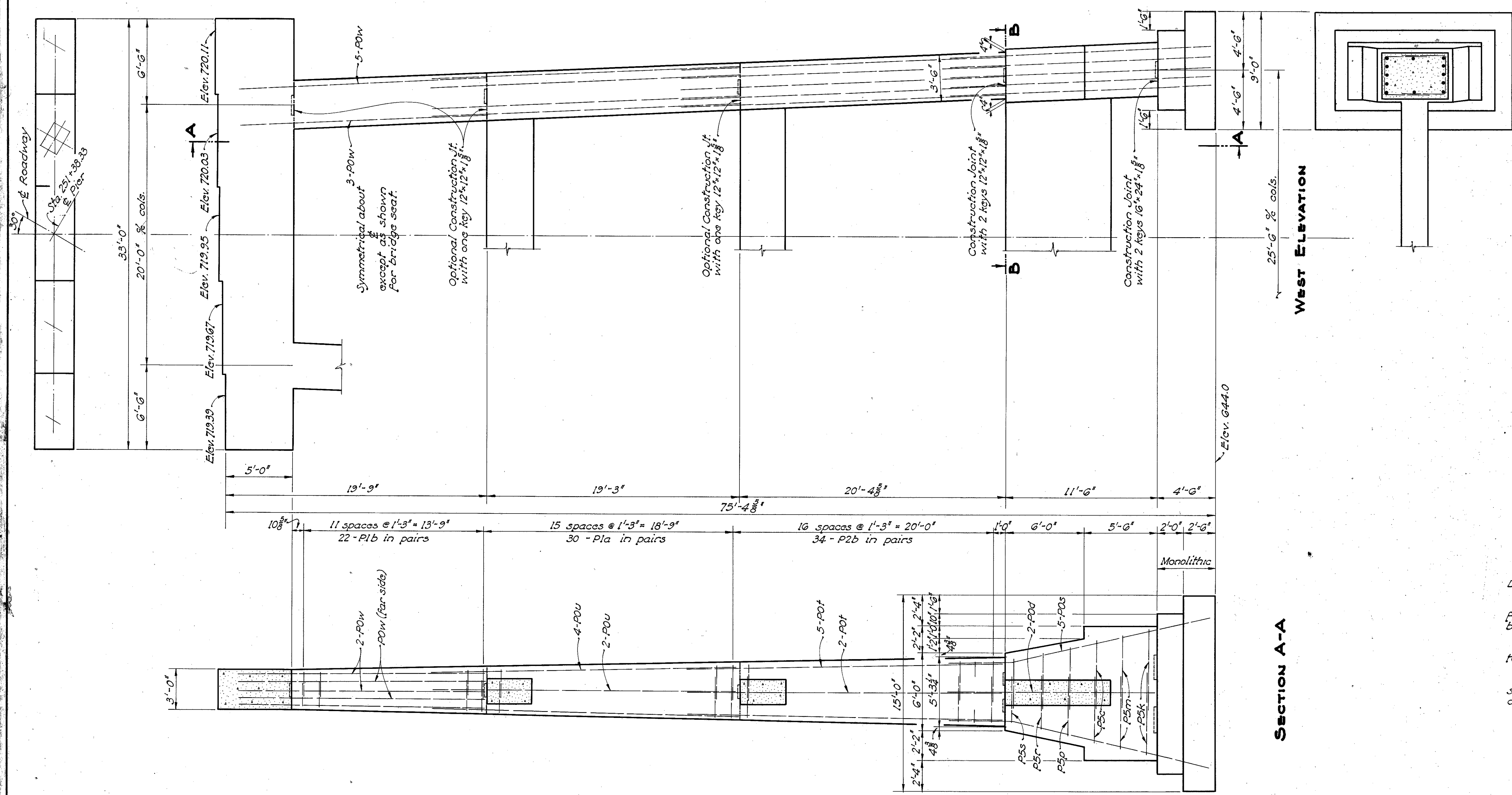


LAKE COUNTY  
Sec. LAK-G-3-3.60  
LAK-174-1.50



SECTIONAL PLAN B-B

SECTION A-A

WEST ELEVATION

For details not shown refer to DETAILS OF PIER 2, sheet 94.

On bridge seat, provide  $\frac{1}{4}$ " wash from centerline to edge except at bearings which shall be level.

Space bridge seat reinforcing to clear anchor bolts.

Reinforcing steel shall clear surface of concrete 2" unless otherwise noted.

STATE OF OHIO DEPARTMENT OF HIGHWAYS BUREAU OF BRIDGES AND RAILROAD CROSSINGS						
<b>DETAILS OF PIER 3</b>						
BRIDGE No. LA-G-47 OVER CHAGRIN RIVER LAKE COUNTY STA. 250+33.0 SEC. LAK-G-3.60-3.76 F-366(1)						
DESIGNED	DRAWN	TRACED	CHECKED	REVIEWED	DATE	REVISED
<i>CAF</i>	<i>CAF</i>	<i>JAMES</i>	<i>CFB</i>	<i>WHR</i>	4-11-50	