

BB-9

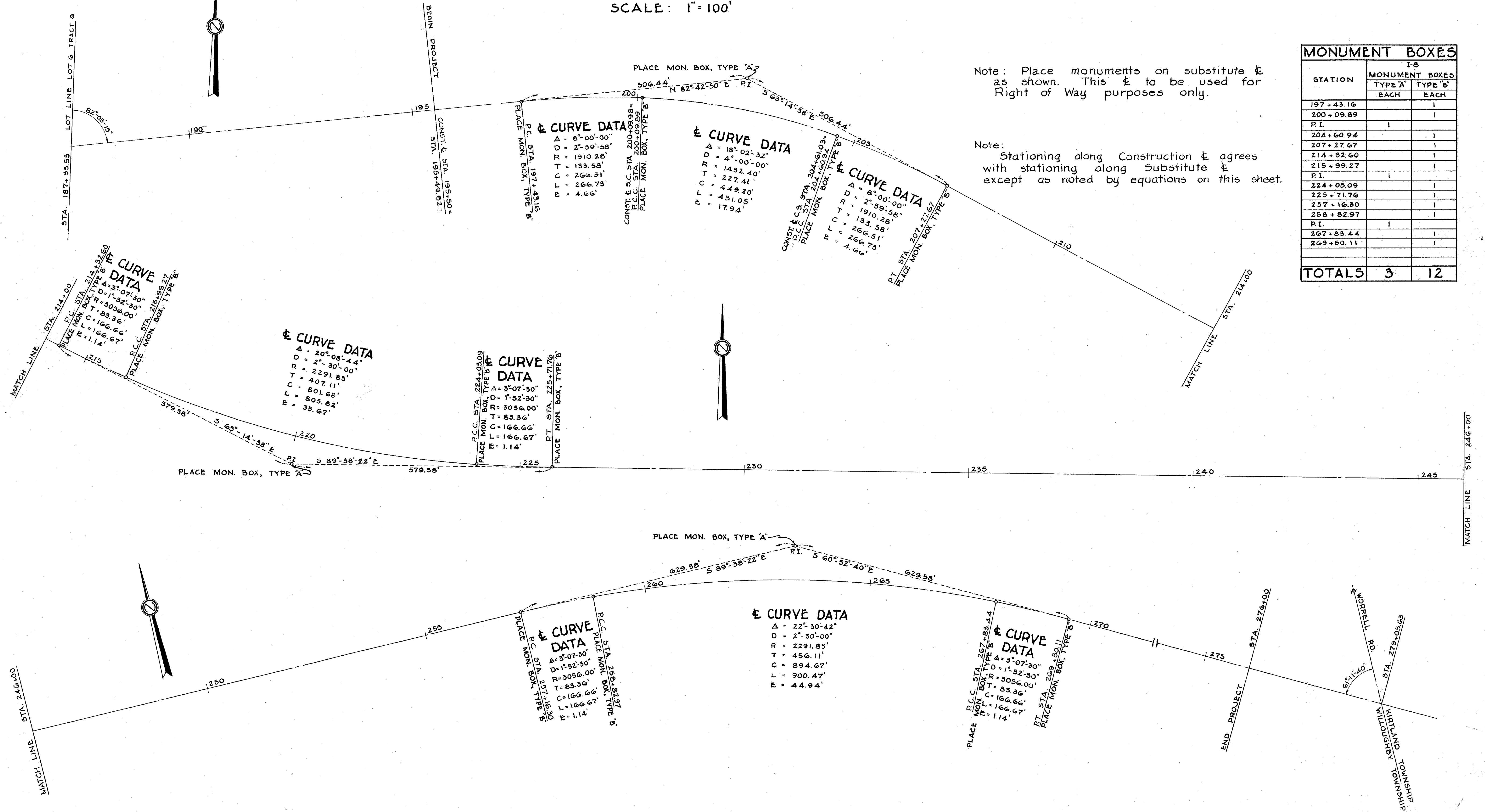
MONUMENT BOX LOCATIONS ON SUBSTITUTE CENTERLINE

SCALE: 1" = 100'

FED. RD. DIVISION	STATE	FEDERAL AID PROJECT	TYPE FUNDS
2	OHIO	F-366 (1)	POST WAR

82
97

LAKE COUNTY
LAK.-G-(3.60-3.76)



Note: Place monuments on substitute & as shown. This & to be used for Right of Way purposes only.

Note: Stationing along Construction & agrees with stationing along Substitute & except as noted by equations on this sheet.

STATION	MONUMENT BOXES	
	I-S	
	TYPE 'A' EACH	TYPE 'B' EACH
197+43.16		1
200+09.89		1
P.I.	1	
204+60.94		1
207+27.67		1
214+32.60		1
215+99.27		1
P.I.	1	
224+05.09		1
225+71.76		1
257+16.30		1
258+82.97		1
P.I.	1	
267+83.44		1
269+50.11		1
TOTALS	3	12