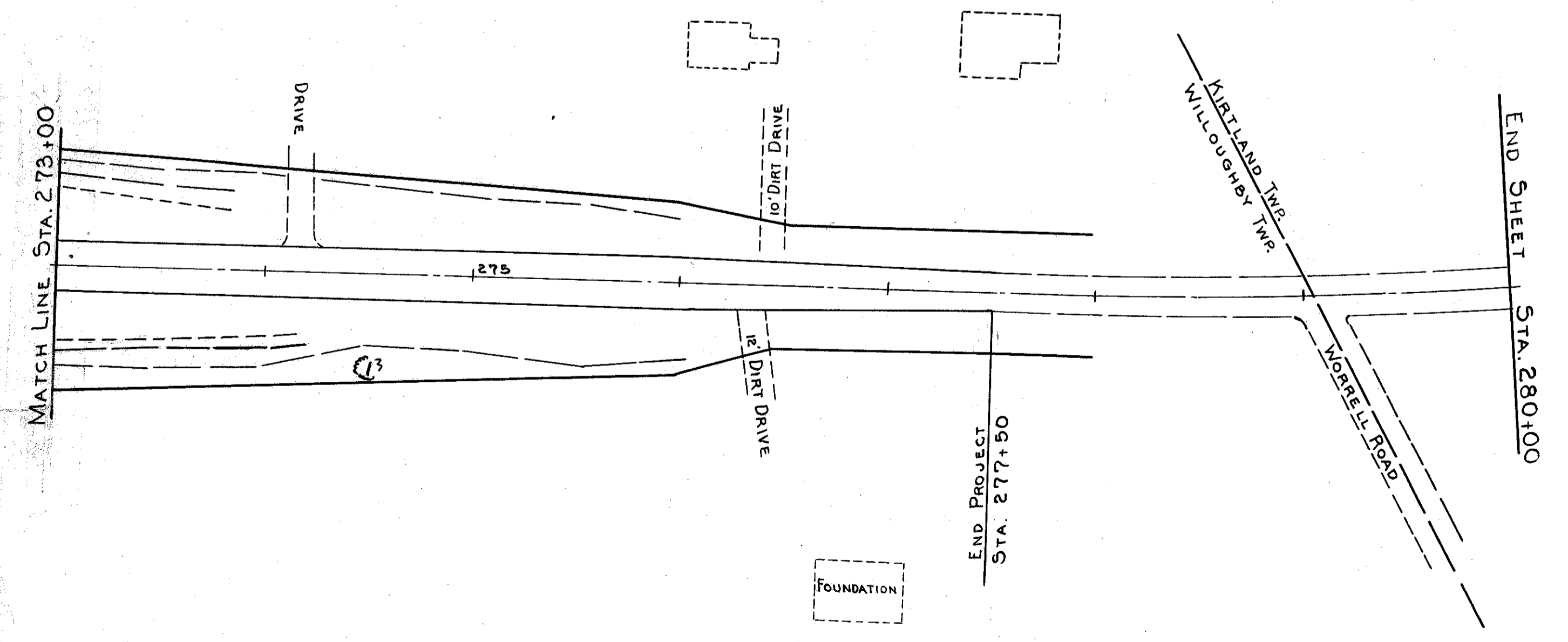
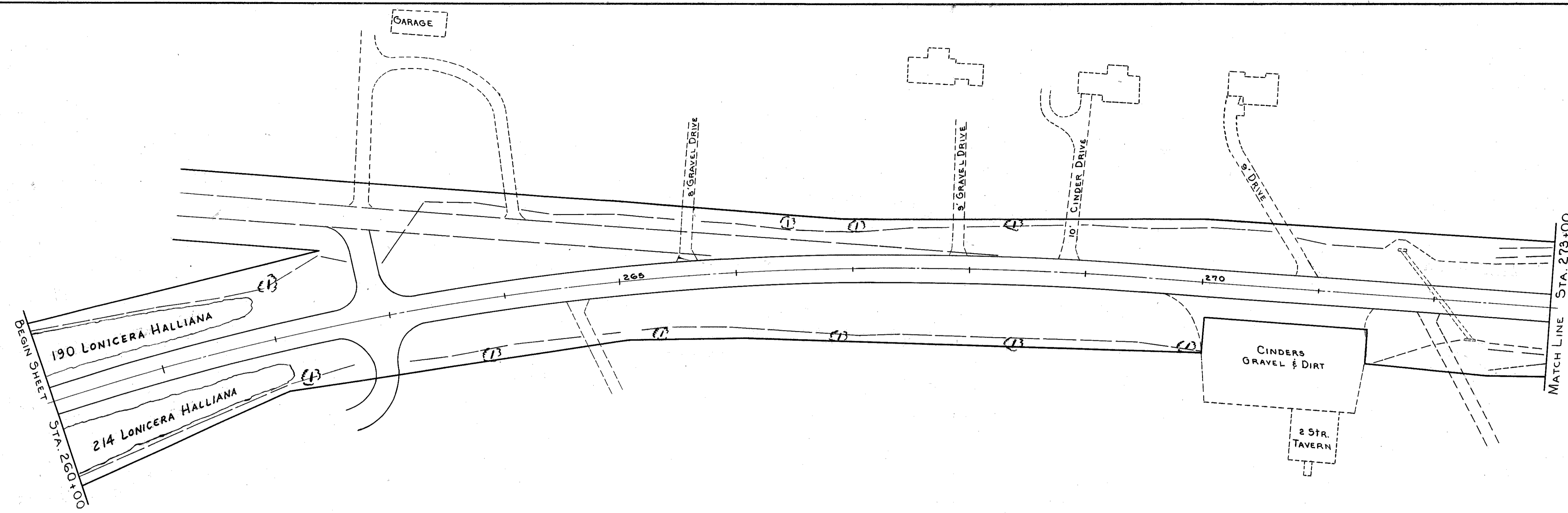


LAKE COUNTY  
LAK-G-(3.60-3.76)



ROADSIDE IMPROVEMENTS					
Station		Item L-9 Seeding	Item L-9 Commercial Fertilizer		
From	To	Sq. Yds.	Tons		
260+00	277+50	18,799	2.538		
<b>TOTALS</b>		<b>18,799</b>	<b>2.538</b>		

L-12 404 LONICERA HALLIANA (HALL'S JAPAN HONEYSUCKLE - 2 YR. OLD)  
L-14 11 GLEDITSIA TRIACANTHOS INERMIS - 1 1/2" TO 2" CAL. BED No. 13