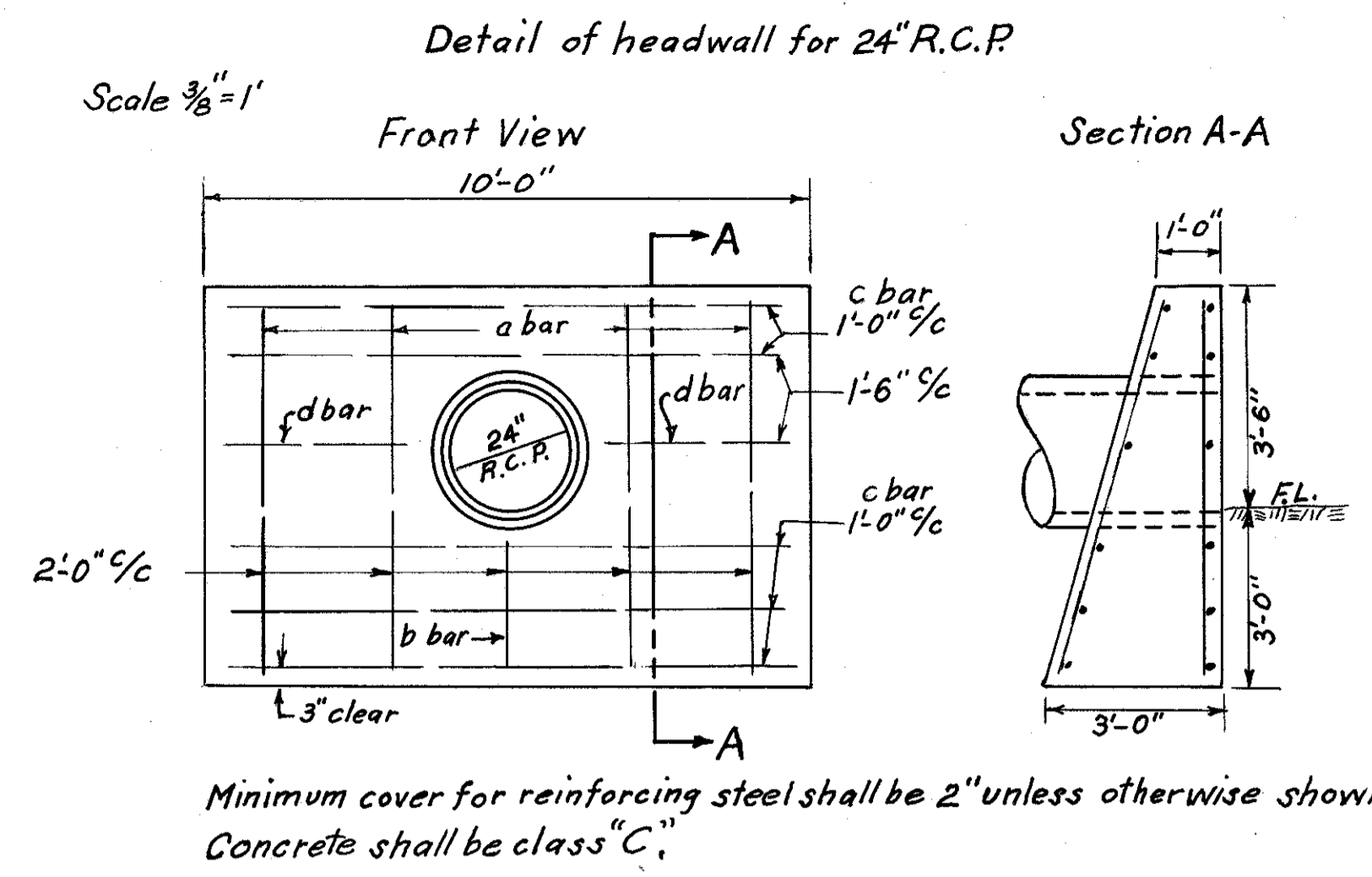
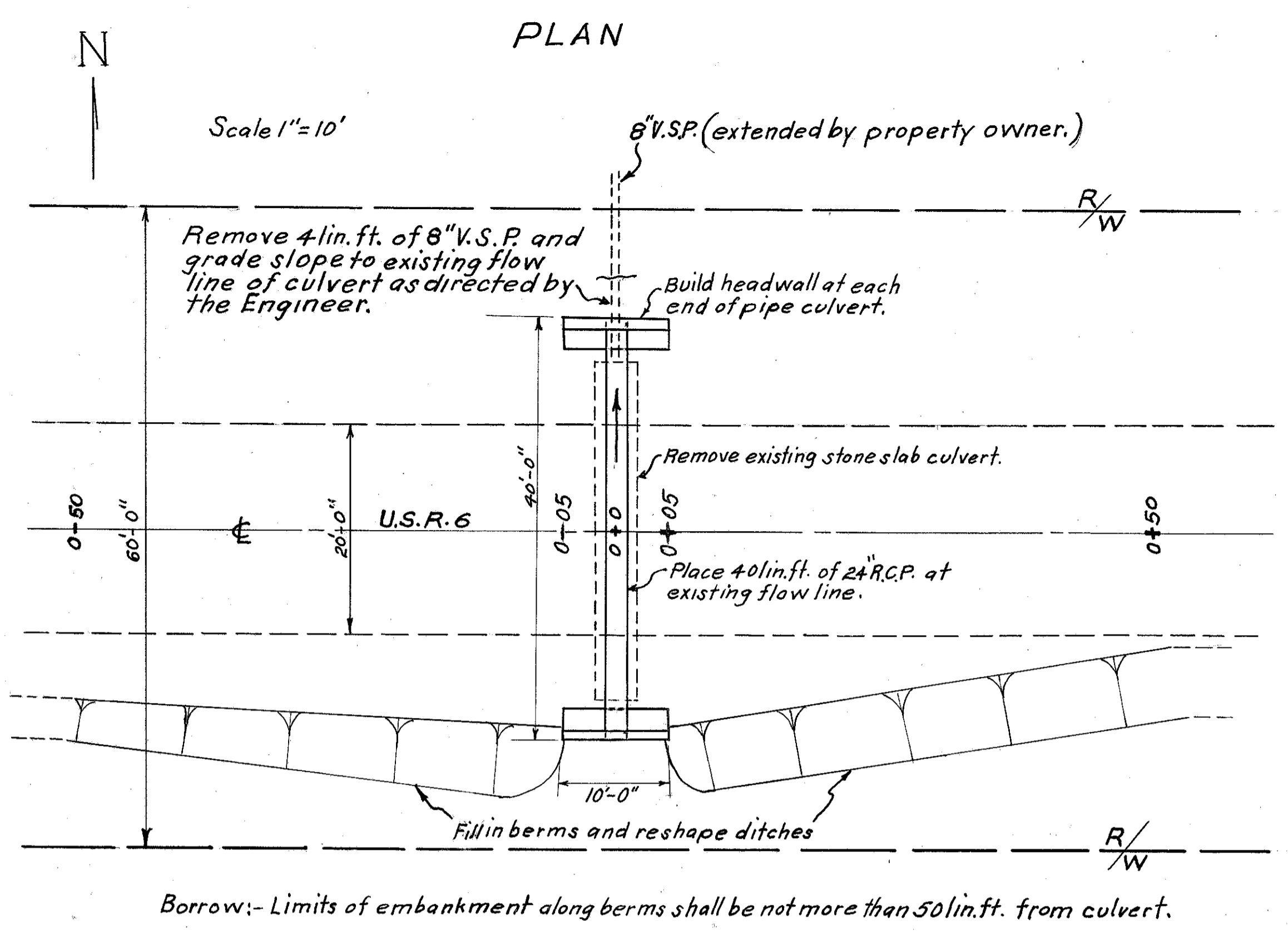


PROPOSAL NO. 2
LAKE COUNTY - U.S.R. 6
SECTION-0.00 (WILLOUGHBY HILLS)
STRUCTURE NO. LAK. 6-0253



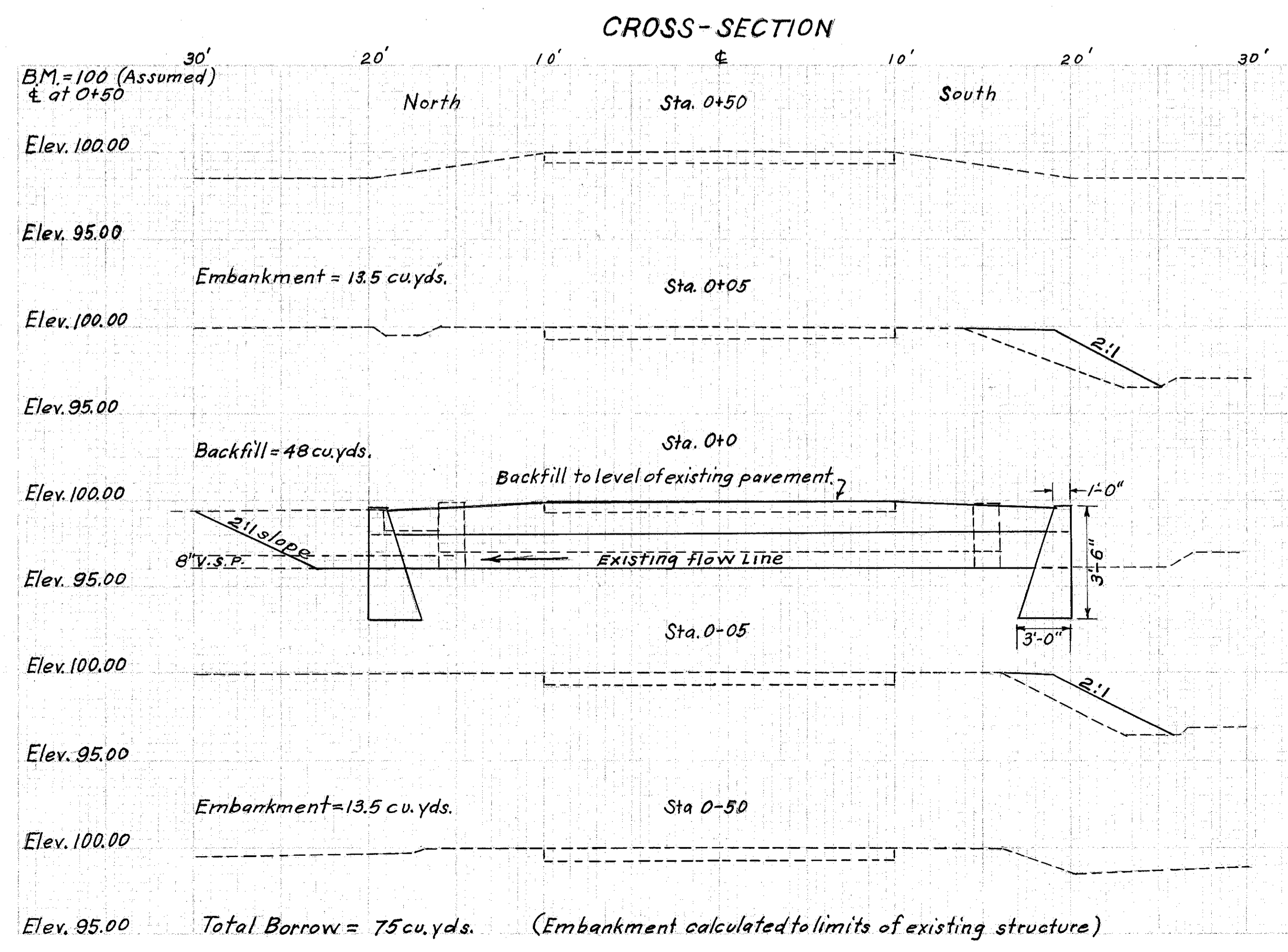
4.5 cu. yds. Concrete, class "C"

BAR LEGEND				
Mark	Size	No.	Length	Wt. Lbs.
a-st.	5	8	6'-1"	50.732
b-st.	5	2	2'-6"	5.215
c-st.	5	10	9'-8"	100.754
d-st.	5	4	3'-4"	13.893
Total Wt. =				170.594

Note:- Quantities listed above are for one headwall only.

WORK REQUIRED:- Remove existing 4'x1'x32' stone slab culvert. Place 40 lin. ft. of 24" reinforced concrete pipe at existing flow line. Build headwalls as per plan. Backfill to elevation of existing pavement. Fill in berms and reshape ditches as shown by cross-section area.

Concrete pavement base and asphaltic surface course to be replaced by the State Highway Maintenance Department.



ESTIMATED QUANTITIES		
Item No.	Quantities	Description
E-2	14 cu. yds.	Excavation (Wet)
E-4	75 cu. yds.	Borrow (Backfill and embankment)
S-1	9 cu. yds.	Concrete, class "C" (Headwalls)
S-24	Lump	Removal of existing stone culvert. (Including pavement removal and any necessary excavation)
S-27	40 lin. ft.	24" Reinforced concrete pipe M-6.6 (C)
S-4	342 lbs.	Reinforcing steel