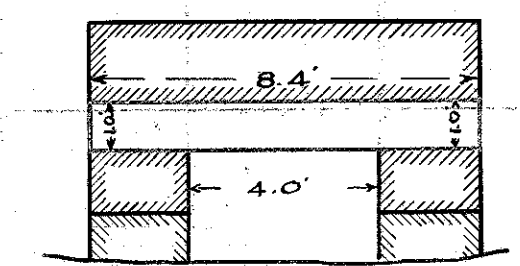
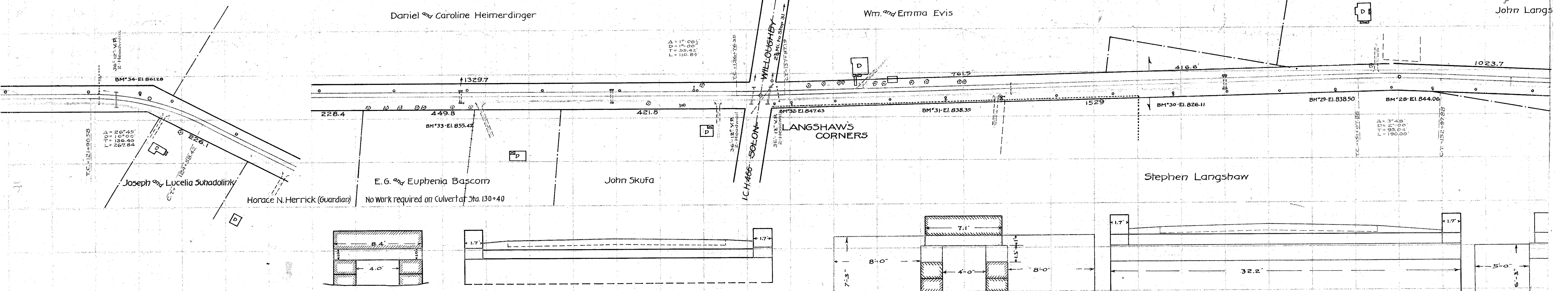


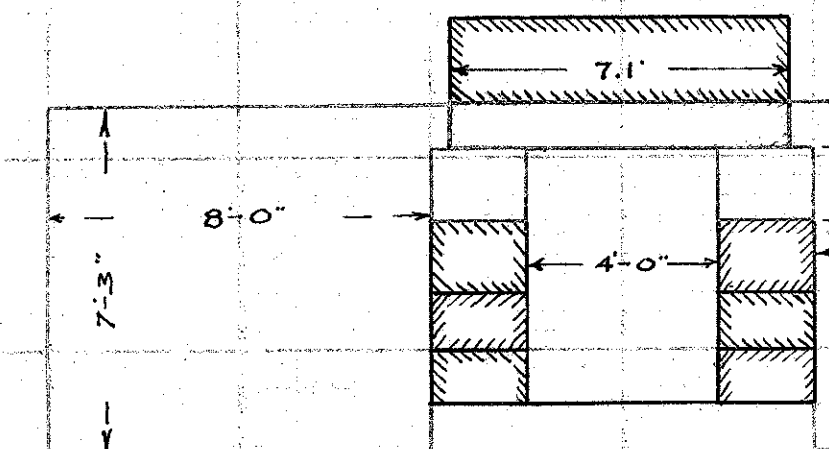
Daniel and Caroline Heimerdinger

Wm. and Emma Evis

John Langs

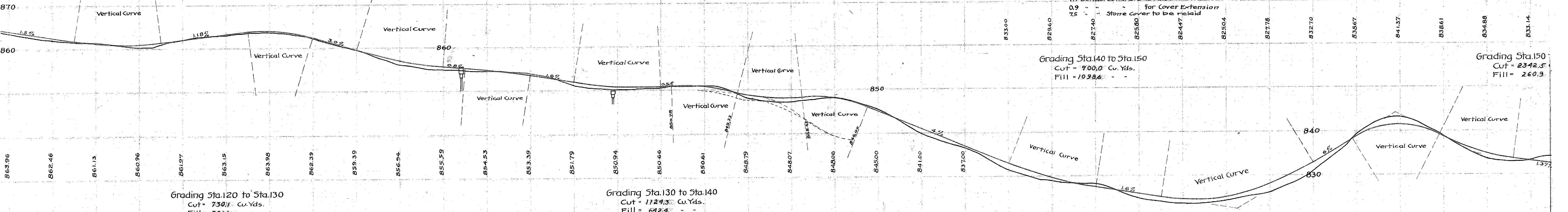


CULVERT AT STATION 133+90  
Two Parapet Stones to be reset.  
106 Cu. Yds. Concrete for cover extension.



CULVERT AT STATION 148+00  
Two Parapet Stones to be reset  
7.1 Cu. Yds. Concrete to raise side walls.  
0.9 " " " " for Cover Extension  
7.5 " " " " Stone Cover to be relaid

13.2 cu. Yds. Plain concrete in end retaining walls.



Grading Sta. 120 to Sta. 130  
Cut = 730.1 Cu. Yds.  
Fill = 391.1 " " "

Grading Sta. 130 to Sta. 140  
Cut = 1124.3 Cu. Yds.  
Fill = 612.4 " " "

Grading Sta. 140 to Sta. 150  
Cut = 700.0 Cu. Yds.  
Fill = 1098.6 " " "

Grading Sta. 150  
Cut = 2342.3  
Fill = 260.9

