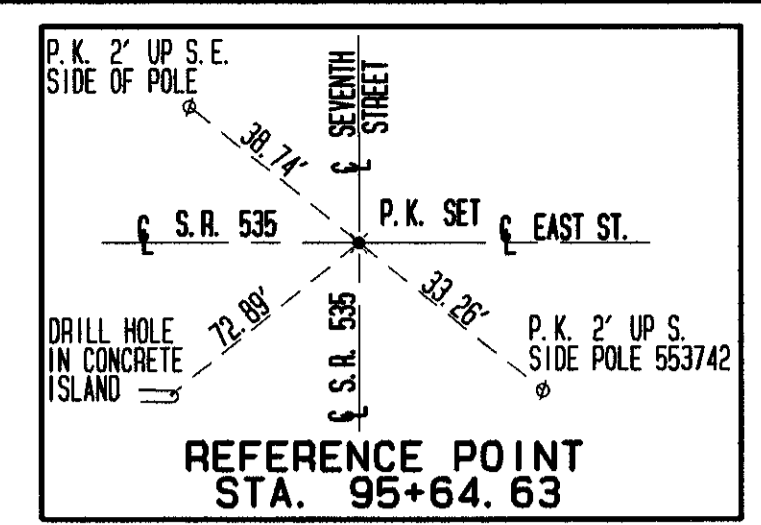
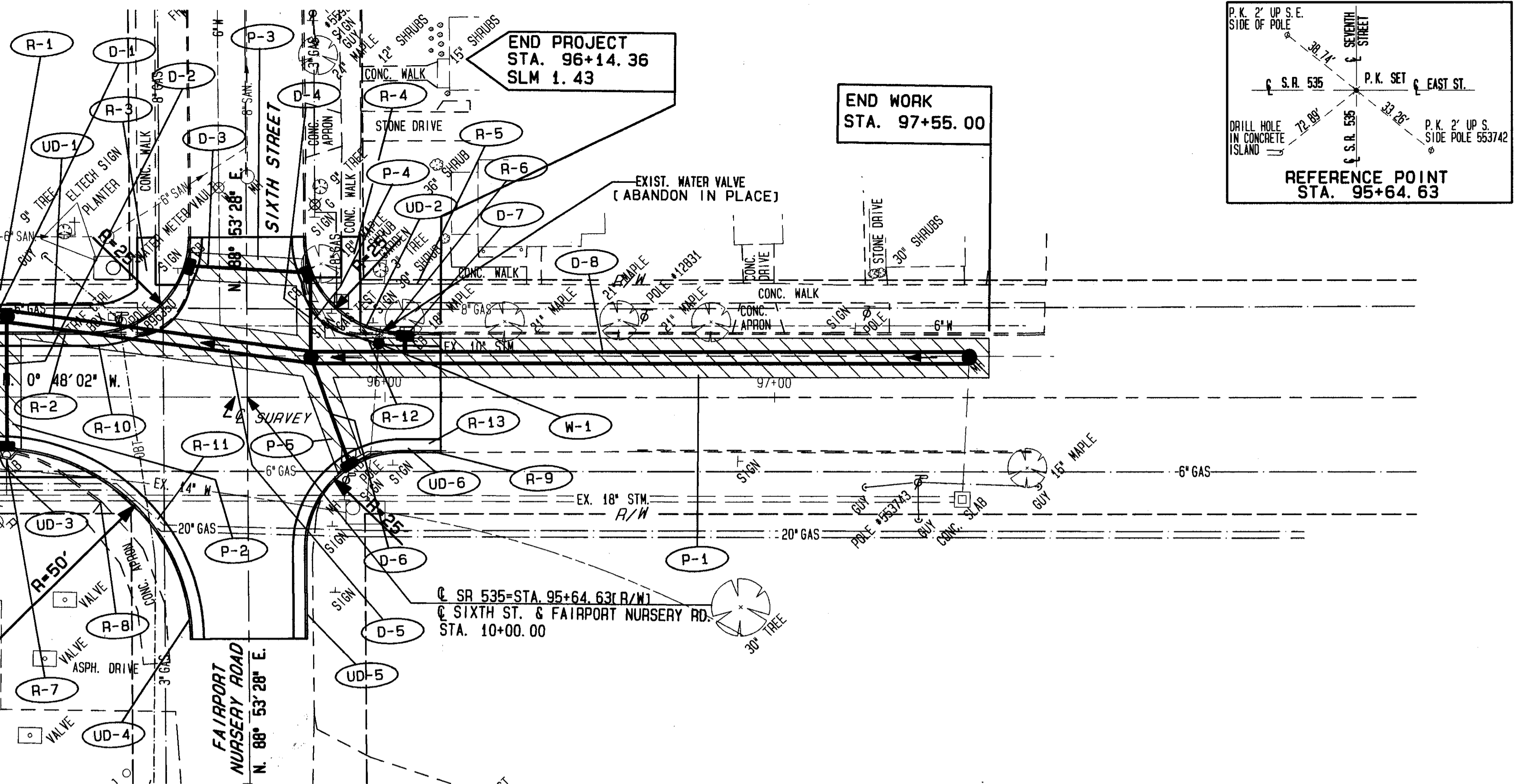


90483 THU 01/28/93 04:45 PM JACK FILES: RM13.PLT PRI3.PLT PL13.PLT P00TS.PLT

MATCH LINE STA. 95+00

MATCH LINE STA. 95+00

95+00



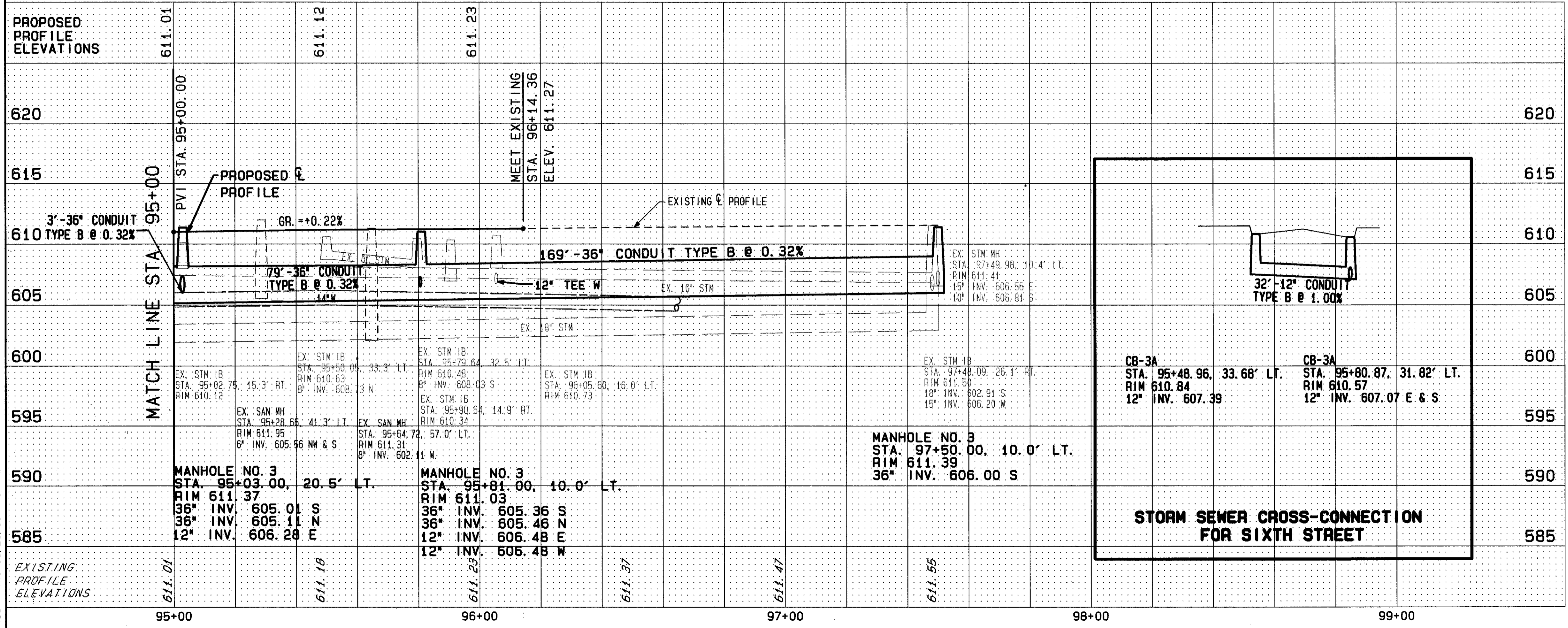
FOR TYPICAL SECTIONS SEE SHEET 3  
 FOR QUANTITY SUB-SUMMARIES SEE SHEET 75 THRU 87  
 FOR PAVEMENT MARKING DETAILS SEE SHEET 73 & 74  
 FOR CATCH BASIN DETAILS SEE SHEET 69  
 FOR DRIVEWAY DETAILS SEE SHEET 68  
 FOR PAVEMENT DETAILS SEE SHEET 66  
 FOR WATERWORK DETAILS SEE SHEET 74 & 72  
 FOR STORM SEWER CROSS CONNECTIONS SEE SHEET 54  
 FOR INTERSECTION DETAILS SEE SHEET 65  
 FOR CURB DETAILS SEE SHEET 64  
 FOR CROSS SECTIONS SEE SHEET 53 & 54

BENCHMARK EL. 610.85  
 TOP STEEL ROD IN MON.  
 N. E. COR. 6TH ST.  
 AND E. AVENUE

REF	LOCATION	S.F.	L.F.	EA	TOTALS
D-1	STA. 95+00 TO 95+10	12	3	1	1
D-2	STA. 95+10 TO 95+20	34	1	1	1
D-3	STA. 95+20 TO 95+30	32	1	1	1
D-4	STA. 95+30 TO 95+40	22	1	1	1
D-5	STA. 95+40 TO 95+50	29	1	1	1
D-6	STA. 95+50 TO 95+60	5	1	1	1
D-7	STA. 95+60 TO 95+70	169	1	1	1
D-8	STA. 95+70 TO 95+80	1	1	1	1
W-1	STA. 95+80 TO 95+90	1	1	1	1
TOTALS					122

REF	LOCATION	S.F.	L.F.	EA	TOTALS
D-1	STA. 95+00 TO 95+10	12	3	1	1
D-2	STA. 95+10 TO 95+20	34	1	1	1
D-3	STA. 95+20 TO 95+30	32	1	1	1
D-4	STA. 95+30 TO 95+40	22	1	1	1
D-5	STA. 95+40 TO 95+50	29	1	1	1
D-6	STA. 95+50 TO 95+60	5	1	1	1
D-7	STA. 95+60 TO 95+70	169	1	1	1
D-8	STA. 95+70 TO 95+80	1	1	1	1
W-1	STA. 95+80 TO 95+90	1	1	1	1
TOTALS					122

REF	LOCATION	S.F.	L.F.	EA	TOTALS
R-1	STA. 95+00 TO 95+10	192	70	1	1
R-2	STA. 95+10 TO 95+20	84	1	1	1
R-3	STA. 95+20 TO 95+30	84	1	1	1
R-4	STA. 95+30 TO 95+40	136	1	1	1
R-5	STA. 95+40 TO 95+50	136	1	1	1
R-6	STA. 95+50 TO 95+60	28	1	1	1
R-7	STA. 95+60 TO 95+70	75	1	1	1
R-8	STA. 95+70 TO 95+80	22	1	1	1
R-9	STA. 95+80 TO 95+90	26	1	1	1
R-10	STA. 95+90 TO 95+00	17	1	1	1
R-11	STA. 95+00 TO 95+10	17	1	1	1
R-12	STA. 95+10 TO 95+20	17	1	1	1
R-13	STA. 95+20 TO 95+30	17	1	1	1
TOTALS					496



PLAN & PROFILE STA. 95+00 TO STA. 98+00

PLAN NO. 271