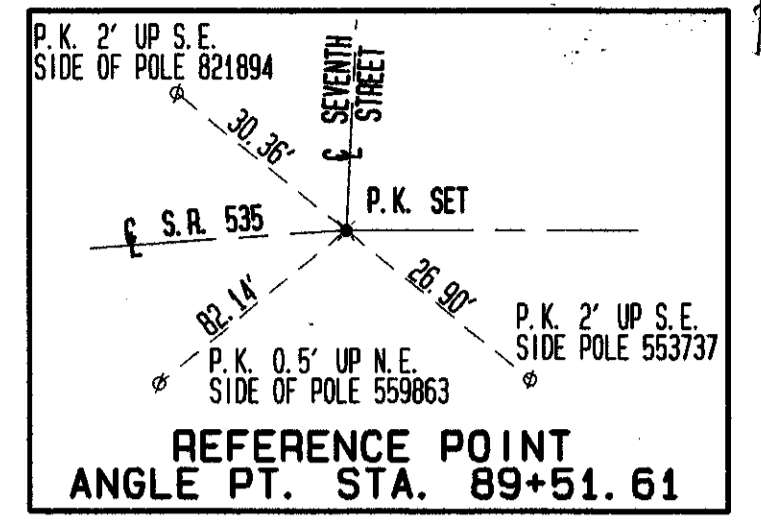


TYPICAL SECTIONS SEE SHEET 3  
 FOR QUANTITY SUB-SUMMARIES SEE SHEET 75 THRU 87  
 FOR PAVEMENT MARKING DETAILS SEE SHEET 73 & 74  
 FOR CATCH BASIN DETAILS SEE SHEET 69  
 FOR DRIVEWAY DETAILS SEE SHEET 68  
 FOR PAVEMENT REPAIR DETAILS SEE SHEET 66  
 FOR WATERWORK DETAILS SEE SHEET 71 & 72  
 FOR DRIVE PROFILES SEE SHEET 60 & 61  
 FOR INTERSECTION DETAILS SEE SHEET 63  
 FOR CURB DETAILS SEE SHEET 64  
 FOR CROSS SECTIONS SEE SHEET 49 THRU 51



FACE OF CURB CURVE DATA

|                                   |
|-----------------------------------|
| P. C. = STA. 89+58.46, 14.06' RT. |
| P. T. = STA. 89+88.74, 13.00' RT. |
| R = 434.43'                       |
| D = 13° 11' 20"                   |
| Δ = 3° 59' 50"                    |
| T = 15.16'                        |
| A = 30.31'                        |
| C = 30.30'                        |

| PROPOSED PROFILE ELEVATIONS | 87+00 | 88+00 | 89+00 | 90+00 | 91+00 |
|-----------------------------|-------|-------|-------|-------|-------|
| 609.96                      |       |       |       |       |       |
| 610.19                      |       |       |       |       |       |
| 610.42                      |       |       |       |       |       |
| 610.65                      |       |       |       |       |       |
| 610.88                      |       |       |       |       |       |
| 611.11                      |       |       |       |       |       |
| 611.01                      |       |       |       |       |       |
| 610.91                      |       |       |       |       |       |
| 610.81                      |       |       |       |       |       |
| 609.95                      |       |       |       |       |       |
| 610.17                      |       |       |       |       |       |
| 610.40                      |       |       |       |       |       |
| 610.63                      |       |       |       |       |       |
| 610.87                      |       |       |       |       |       |
| 611.10                      |       |       |       |       |       |
| 611.00                      |       |       |       |       |       |
| 610.87                      |       |       |       |       |       |
| 610.81                      |       |       |       |       |       |

| REF           | LOCATION   | L.F. | S.Y. | E.A. | S.F. |
|---------------|--|------|------|------|------|
| D-1           | STA. 87+00, 20.5' LT. TO STA. 89+64, 21.42' LT.        | 25   |      |      |      |
| D-2           | STA. 9+59, 20, 12.35' LT. TO STA. 9+62, 80, 12.02' RT. | 19   |      |      |      |
| D-3           | STA. 89+64, 21.42' LT. TO STA. 9+69, 20, 12.35' RT.    | 19   |      |      |      |
| D-4           | STA. 9+66, 18' LT.                                     |      |      |      |      |
| D-5           | STA. 89+64, 21.42' LT. TO STA. 91+00, 20.9' LT.        | 136  |      |      |      |
| <b>TOTALS</b> |  |      |      |      |      |
|               |  | 44   |      |      |      |

| REF           | LOCATION   | L.F. | S.Y. | E.A. | S.F. |
|---------------|--|------|------|------|------|
| D-1           | STA. 87+00, 20.5' LT. TO STA. 89+64, 21.42' LT.        | 25   |      |      |      |
| D-2           | STA. 9+59, 20, 12.35' LT. TO STA. 9+62, 80, 12.02' RT. | 19   |      |      |      |
| D-3           | STA. 89+64, 21.42' LT. TO STA. 9+69, 20, 12.35' RT.    | 19   |      |      |      |
| D-4           | STA. 9+66, 18' LT.                                     |      |      |      |      |
| D-5           | STA. 89+64, 21.42' LT. TO STA. 91+00, 20.9' LT.        | 136  |      |      |      |
| <b>TOTALS</b> |  |      |      |      |      |
|               |  | 44   |      |      |      |

| REF           | LOCATION                          | L.F. | S.Y. | E.A. | S.F. |
|---------------|-----------------------------------|------|------|------|------|
| R-1           | STA. 87+80, 17' LT.               | 1    |      |      |      |
| R-2           | STA. 87+83, 17' RT.               | 1    |      |      |      |
| R-3           | STA. 87+00, LT. TO STA. 9+61, RT. | 86   |      |      |      |
| R-4           | STA. 87+00, LT. TO STA. 9+61, RT. | 400  |      |      |      |
| R-5           | STA. 87+00 TO STA. 91+00, RT.     | 151  |      |      |      |
| R-6           | STA. 87+00 TO STA. 91+00, RT.     | 151  |      |      |      |
| R-7           | STA. 9+61, LT. TO STA. 91+00, LT. | 51   |      |      |      |
| R-8           | STA. 9+61, LT. TO STA. 91+00, LT. | 1330 |      |      |      |
| R-9           | STA. 87+00 TO STA. 89+38, LT.     | 750  |      |      |      |
| R-10          | STA. 89+70 TO STA. 91+00, LT.     |      |      |      |      |
| <b>TOTALS</b> |                                   |      |      |      |      |
|               |                                   | 809  | 271  | 2    | 2080 |

PLAN & PROFILE STA. 87+00 TO STA. 91+00

90483 THU 01/28/93 04:45 PM JACK FILES: PDOTS.PLT PL11.PLT PR11.PLT RK11.PLT