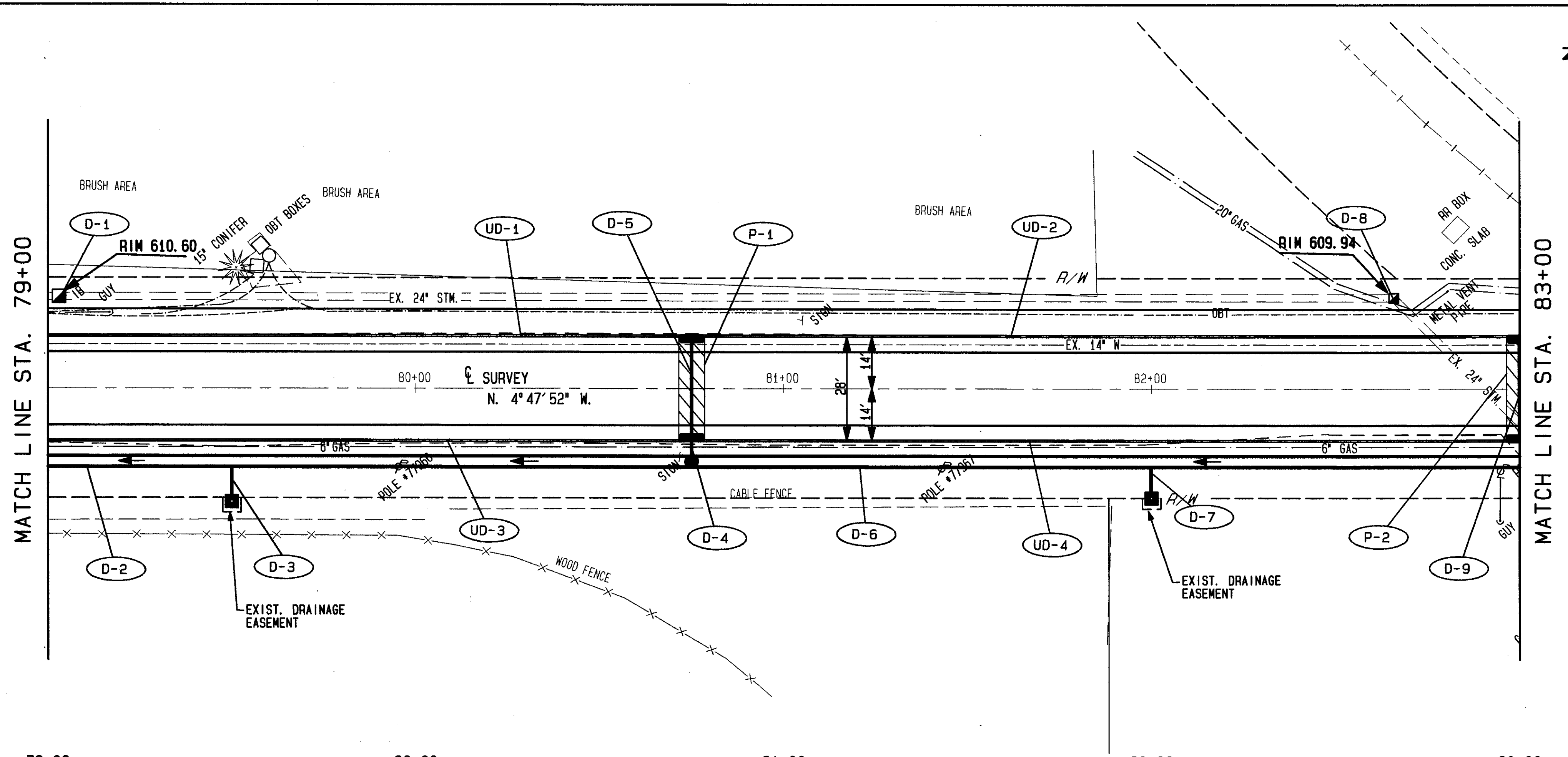


FOR TYPICAL SECTIONS SEE SHEET 3  
 FOR QUANTITY SUB-SUMMARIES SEE SHEET 75 THRU 87  
 FOR PAVEMENT MARKING DETAILS SEE SHEET 73 & 74  
 FOR CATCH BASIN DETAILS SEE SHEET 69  
 FOR DRIVEWAY DETAILS SEE SHEET 68  
 FOR PAVEMENT REPAIR DETAILS SEE SHEET 66  
 FOR WATERWORK DETAILS SEE SHEET 71 & 72  
 FOR STORM SEWER CROSS CONNECTIONS SEE SHEET 46 & 47  
 FOR CROSS SECTIONS SEE SHEET 45 THRU 47

PLAN NO. 271



	79+00	80+00	81+00	82+00	83+00
<b>PROPOSED PROFILE ELEVATIONS</b>	610.51	610.41	610.31	610.21	610.11
620					
615					
610					
605					
600					
595					
590					
585					
<b>EXISTING PROFILE ELEVATIONS</b>	610.52	610.39	610.28	610.20	610.11

PROPOSED & EXISTING PROFILES	79+00	80+00	81+00	82+00	83+00
<b>PROPOSED PROFILE</b>	610.51	610.41	610.31	610.21	610.11
<b>EXISTING PROFILE</b>	610.52	610.39	610.28	610.20	610.11
<b>GR. = -0.20%</b>					
<b>GR. = -0.16%</b>					

CONDUIT	START STA.	END STA.	TYPE	GRADE
175" - 36"	79+00	80+00	TYPE B	0.24%
225" - 36"	80+00	83+00	TYPE B	0.20%

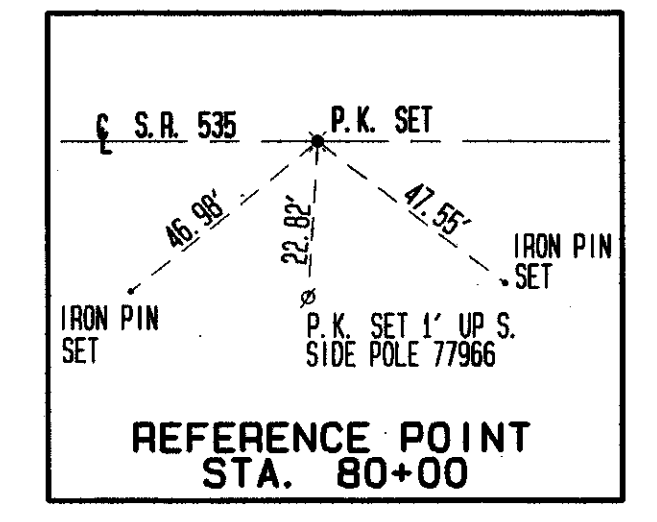
MANHOLE NO. 3	STA.	TYPE	INVERT ELEVATIONS
MANHOLE NO. 3	80+75.00	20.0' RT.	36" INV. 597.64 S 36" INV. 597.64 N 12" INV. 605.71 W

MANHOLE NO. 3	STA.	TYPE	INVERT ELEVATIONS
MANHOLE NO. 3	82+65.84	24.7' LT.	24" INV. 596.52 S 24" INV. 596.52 NE

ITEM	QTY	UNIT	DESCRIPTION
12" CONDUIT, TYPE B	56	27	225"
36" CONDUIT, TYPE B	175	1	706.02
12" CONDUIT, TYPE C	6	11	706.02
36" CONDUIT, TYPE B	225	6	706.02
MANHOLE NO. 3	1	1	EA
CATCH BASIN NO. 3	1	1	EA
CATCH BASIN NO. 2-28	1	1	EA
CATCH BASIN RECONSTRUCTED TO GRADE, AS PER PLAN	1	1	EA
TEE - 36" X 12" X 3/8"	1	1	EA
<b>TOTALS</b>	<b>56</b>	<b>27</b>	<b>175</b>

REF.	LOCATION	DESCRIPTION
D-1	STA. 79+03.25' LT.	TO STA. 80+75.20' RT.
D-2	STA. 79+00.20' RT.	TO STA. 79+50.31' RT.
D-3	STA. 79+50.20' RT.	TO STA. 80+75.20' RT.
D-4	STA. 80+75.14' RT.	TO STA. 80+75.14' RT.
D-5	STA. 80+75.14' LT.	TO STA. 83+00.20' RT.
D-6	STA. 80+75.14' LT.	TO STA. 83+00.20' RT.
D-7	STA. 82+00.20' RT.	TO STA. 82+00.30' RT.
D-8	STA. 82+65.25' LT.	TO STA. 83+00.14' RT.
D-9	STA. 83+00.14' LT.	TO STA. 83+00.14' RT.



90483 THU 01/28/93 04:45 PM JACK FILES: P00TS.PLT PL11.PLT PR11.PLT RM11.PLT