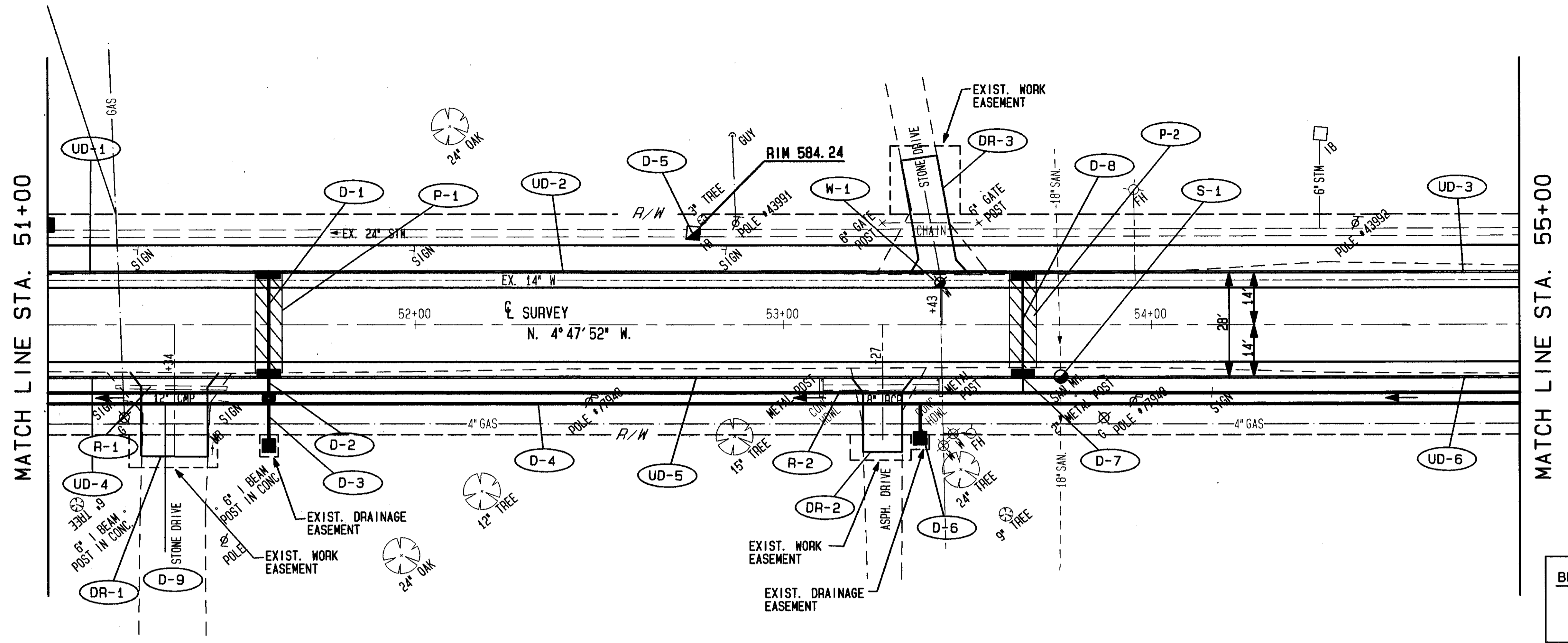


FOR TYPICAL SECTIONS SEE SHEET 3
 FOR QUANTITY SUB-SUMMARIES SEE SHEET 75 THRU 87
 FOR PAVEMENT MARKING DETAILS SEE SHEET 73 & 74
 FOR CATCH BASIN DETAILS SEE SHEET 69
 FOR DRIVEWAY DETAILS SEE SHEET 68
 FOR PAVEMENT REPAIR DETAILS SEE SHEET 66
 FOR WATERWORK DETAILS SEE SHEET 71 & 72
 FOR DRIVE PROFILES SEE SHEET 55
 FOR STORM SEWER CROSS CONNECTIONS SEE SHEET 25 & 26
 FOR CROSS SECTIONS SEE SHEET 25 THRU 27



BENCHMARK EL. 586.99
 TOP HYDRANT
 STA. 53+52±, RT.

EXISTING PROFILE ELEVATIONS	51+00	52+00	53+00	54+00	55+00
560	584.08	584.09	584.21	584.29	584.43
565					
570					
575					
580					
585					
590					
595					
PROPOSED PROFILE ELEVATIONS	584.09	584.16	584.23	584.30	584.41

ITEM	DESCRIPTION	QTY	UNIT	EA.
603	12" CONDUIT, TYPE B	56	LINEAL FEET	1
603	12" CONDUIT, TYPE C	32	LINEAL FEET	1
603	36" CONDUIT, TYPE B	60	LINEAL FEET	1
603	36" CONDUIT, TYPE I	340	LINEAL FEET	1
604	CATCH BASIN NO. 3 AS PER PLAN	2	EACH	1
604	CATCH BASIN NO. 2-28 AS PER PLAN	1	EACH	1
604	CATCH BASIN RECONSTRUCTED TO GRADE AS PER PLAN	1	EACH	1
604	MANHOLE RECONSTRUCTED TO GRADE AS PER PLAN	1	EACH	1
604	TEE - 36" X 12" X 36"	1	EACH	1
604	WATER VALVE BOX ADJUSTED TO GRADE	1	EACH	1
TOTALS				

REF	LOCATION	DESCRIPTION	QTY	UNIT
D-1	STA. 51+60.14' LT. TO STA. 51+60.14' RT.	12" TEE E.	1	EACH
D-2	STA. 51+60.14' RT. TO STA. 51+60.20' RT.	12" TEE W.	1	EACH
D-3	STA. 51+60.20' RT. TO STA. 51+60.33' RT.	12" TEE E.	1	EACH
D-4	STA. 51+60.20' RT. TO STA. 55+00.20' RT.	12" TEE W.	1	EACH
D-5	STA. 52+75.25' LT.	12" TEE E.	1	EACH
D-6	STA. 53+37.20' RT. TO STA. 53+37.31' RT.	12" TEE W.	1	EACH
D-7	STA. 53+65.14' RT. TO STA. 53+65.20' RT.	12" TEE E.	1	EACH
D-8	STA. 53+65.14' LT. TO STA. 53+65.14' RT.	12" TEE W.	1	EACH
D-9	STA. 51+00.20' RT. TO STA. 51+60.20' RT.	12" TEE E.	1	EACH
S-1	STA. 53+75.14' RT.	12" TEE W.	1	EACH
W-1	STA. 53+43.11' LT.	12" TEE E.	1	EACH
TOTALS				

REF	LOCATION	DESCRIPTION	QTY	UNIT
R-1	STA. 51+18 TO STA. 51+49	24" PIPE REMOVED	31	LINEAL FEET
R-2	STA. 53+11 TO STA. 53+42, RT.	24" PIPE REMOVED	31	LINEAL FEET
TOTALS				

PLAN & PROFILE STA. 51+00 TO STA. 55+00

90483 THU 01/28/93 04:45 PM JACK FILES: RM2.PLT PR2.PLT PL2.PLT P00TS.PLT