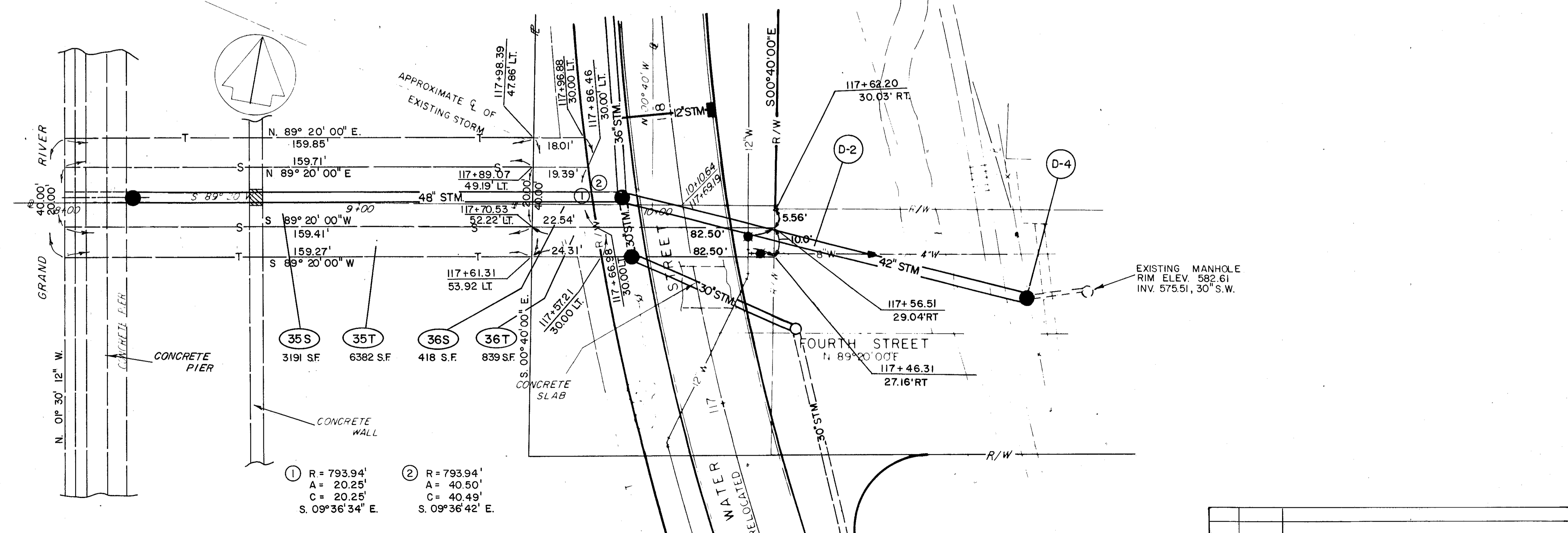
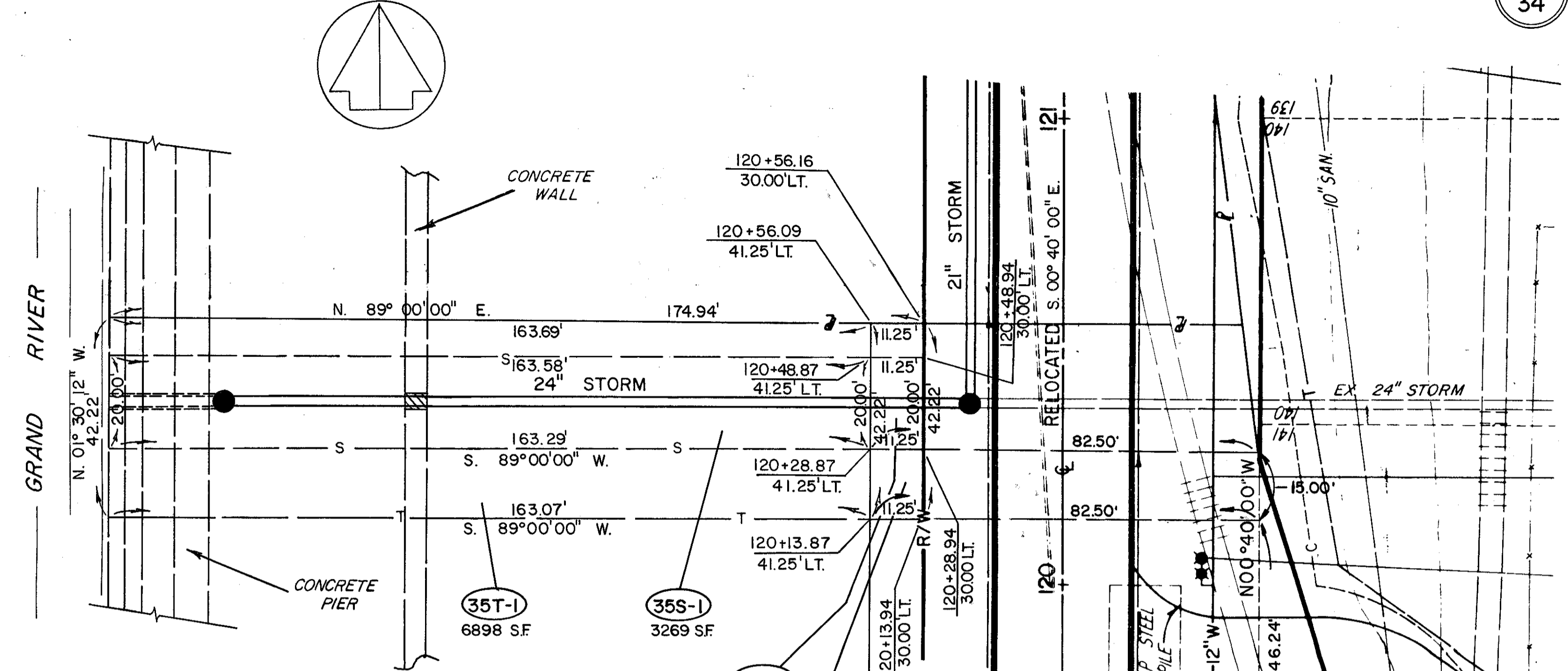


③ R = 793.94'
 A = 20.03'
 C = 20.03'
 S. 03° 56' 41" E.



① R = 793.94'
 A = 20.25'
 C = 20.25'
 S. 09° 36' 34" E.

② R = 793.94'
 A = 40.50'
 C = 40.49'
 S. 09° 36' 42" E.

REV#	DATE	DESCRIPTION

WFT 3-25-88 REMOVED PCLS 35T-2, 36T-2 & 37T AND EXISTING EXTENSIONS SHOWN.