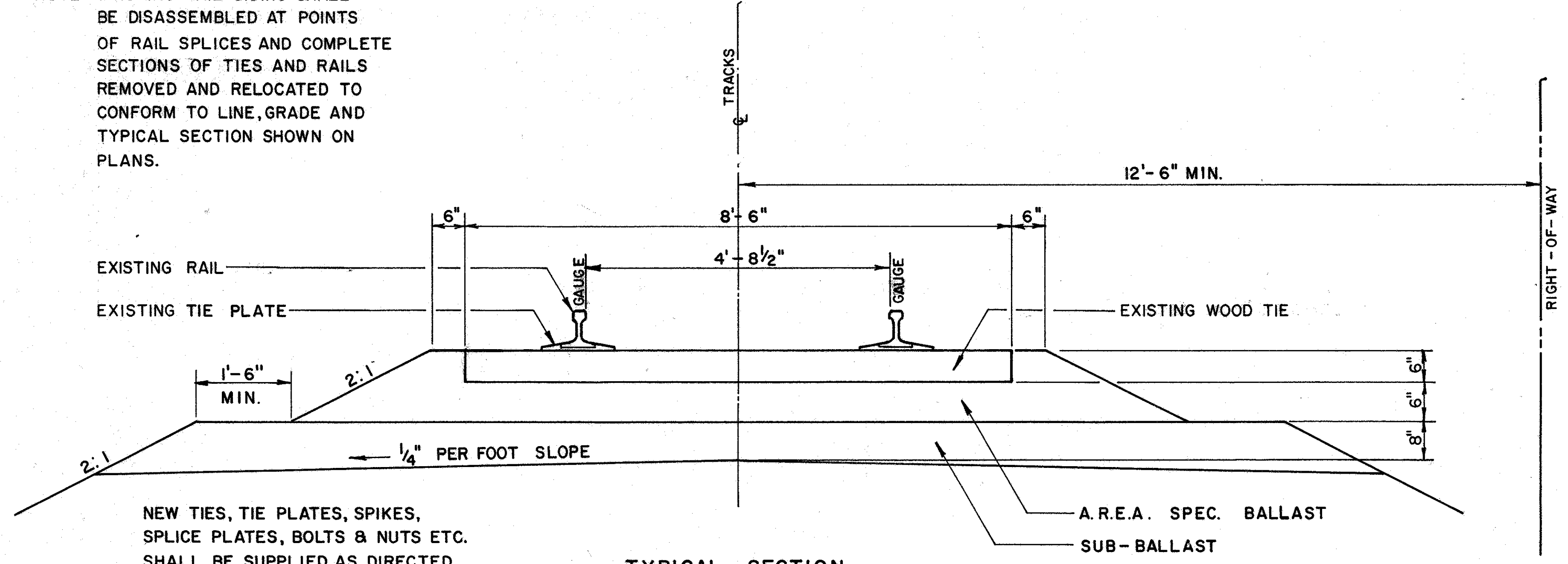
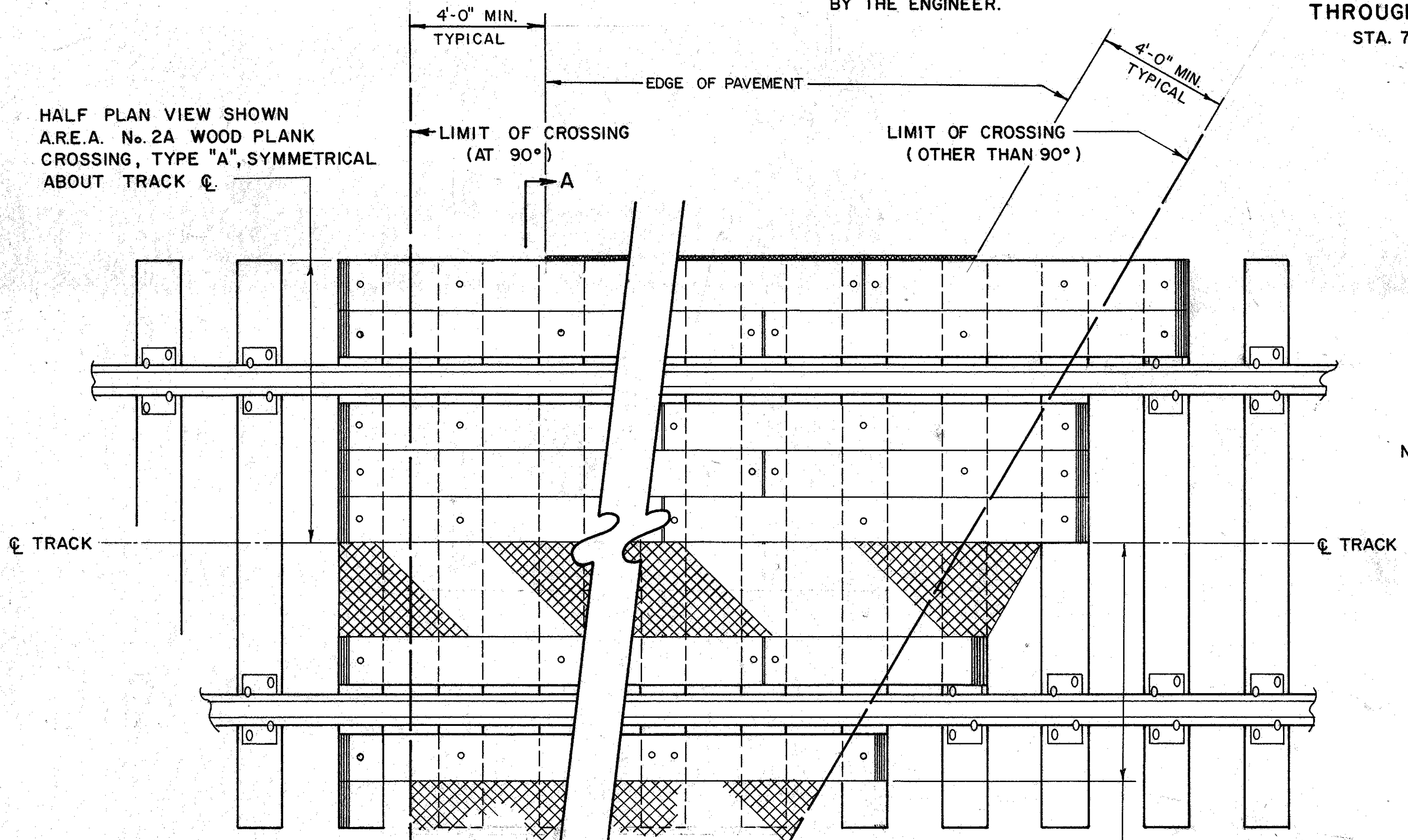


NOTE: EXISTING RAIL SIDING SHALL BE DISASSEMBLED AT POINTS OF RAIL SPLICES AND COMPLETE SECTIONS OF TIES AND RAILS REMOVED AND RELOCATED TO CONFORM TO LINE, GRADE AND TYPICAL SECTION SHOWN ON PLANS.

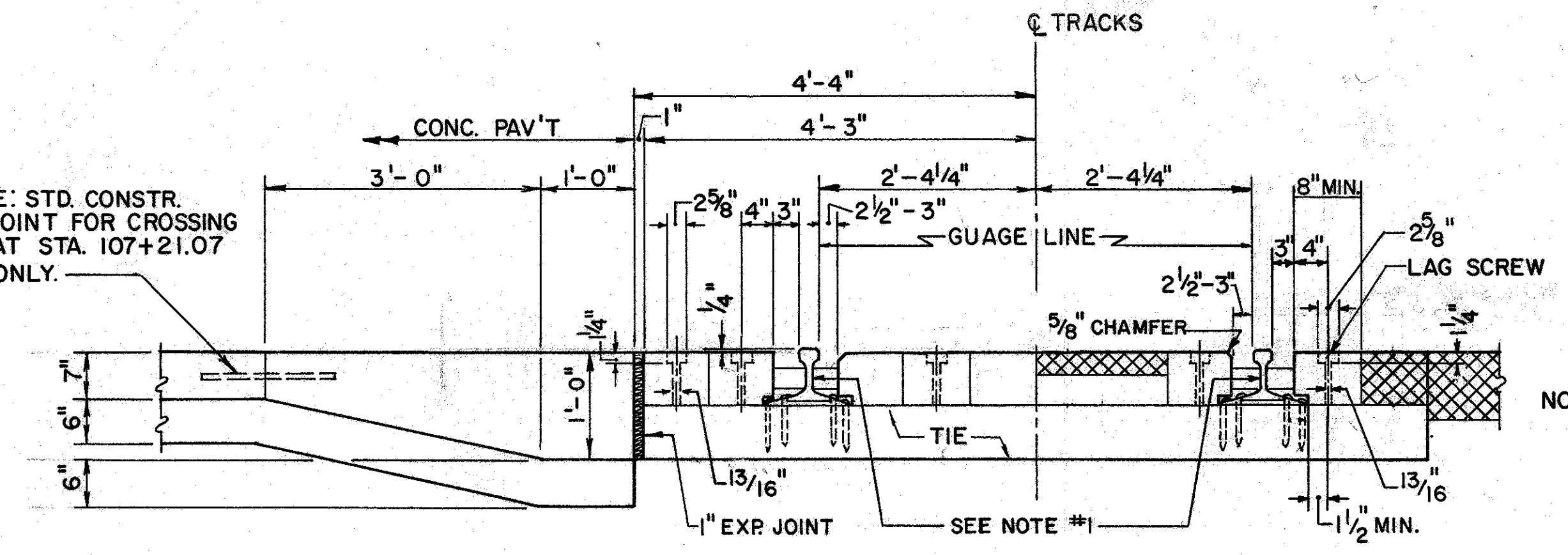


TYPICAL SECTION THROUGH RAIL BED
STA. 74+00 TO STA. 91+00
SCALE: 3/4" = 1'-0"

NEW TIES, TIE PLATES, SPIKES, SPLICE PLATES, BOLTS & NUTS ETC. SHALL BE SUPPLIED AS DIRECTED BY THE ENGINEER.



A.R.E.A. GRADE CROSSING (PLAN VIEW)
SCALE: 3/4" = 1'-0"



SECTION "A-A"
SCALE 3/4" = 1'-0"

NOTE #1: SPACERS BETWEEN RAIL AND HEADERS SHOULD BE FILLED WITH SNUG-FITTING TIMBER FILLERS AS SHOWN, OR MASTIC MATERIAL.

A.R.E.A. No. 2A WOOD PLANK CROSSING, TYPE "A"
(HALF SECTION SHOWN, SYMMETRICAL ABOUT TRACK C)

A.R.E.A. No. 1 BITUMINOUS CROSSING
(HALF SECTION SHOWN, SYMMETRICAL ABOUT TRACK C)

HALF PLAN VIEW SHOWN AREA No. 1 BITUMINOUS CROSSING, SYMMETRICAL ABOUT TRACK C.

HALF PLAN VIEW SHOWN AREA No. 2A WOOD PLANK CROSSING, TYPE "A", SYMMETRICAL ABOUT TRACK C.