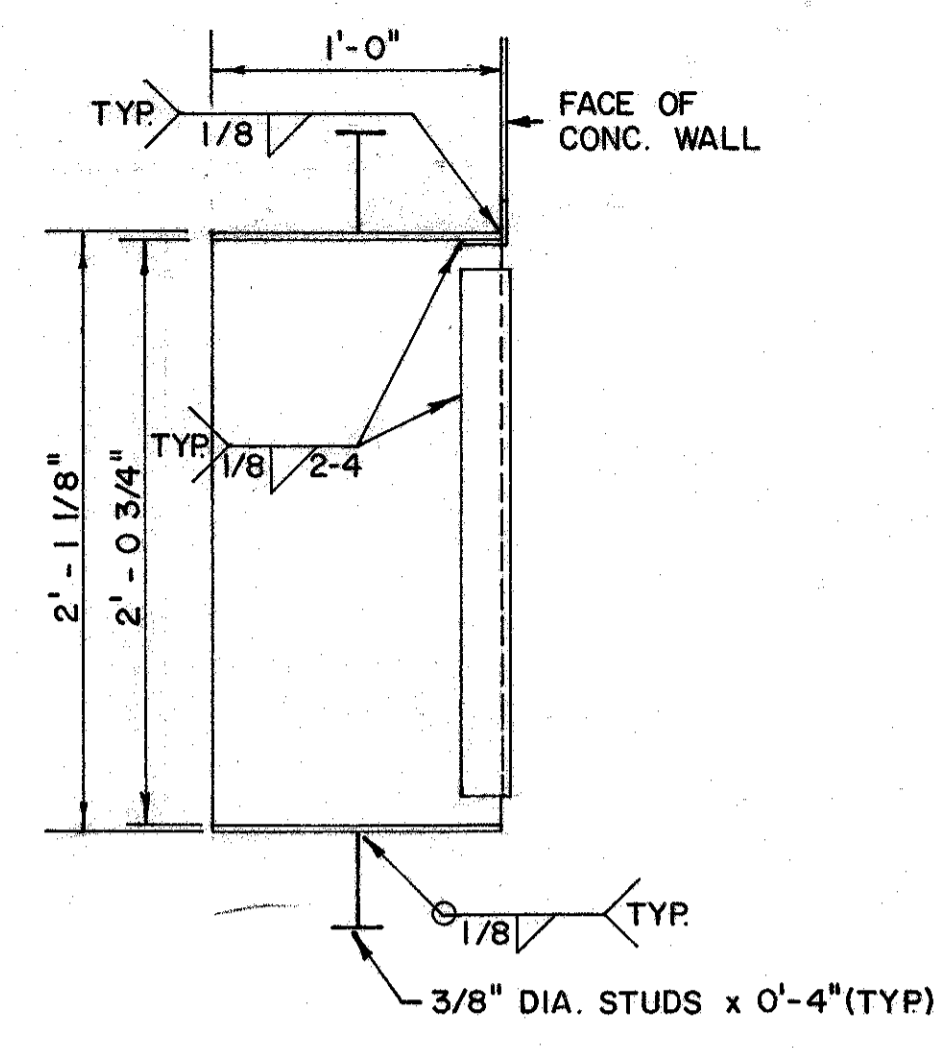
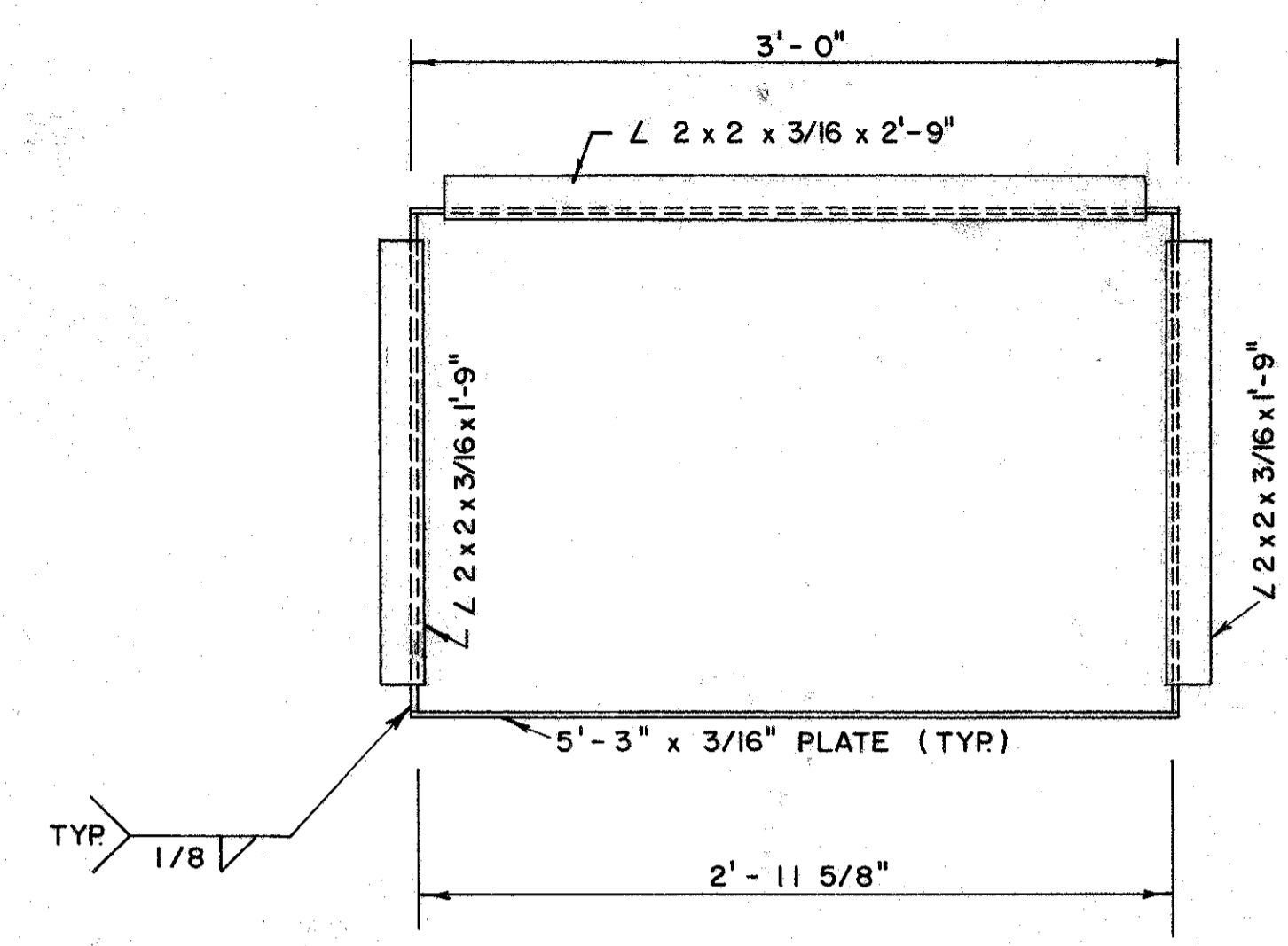
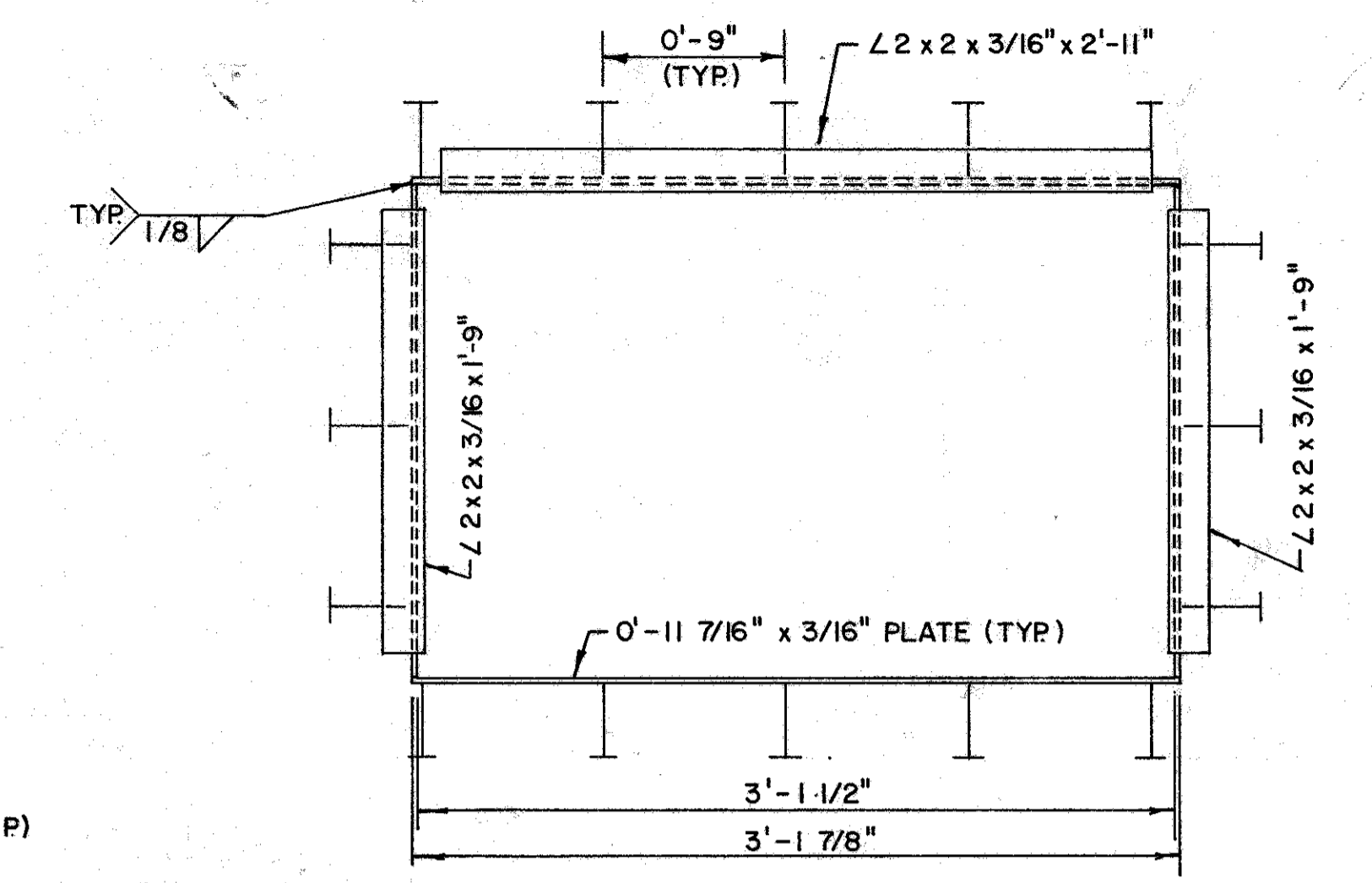


**STEEL OUTLET BOX**  
(TYPICAL OF 4)  
SCALE: 1 1/2" = 1'-0"

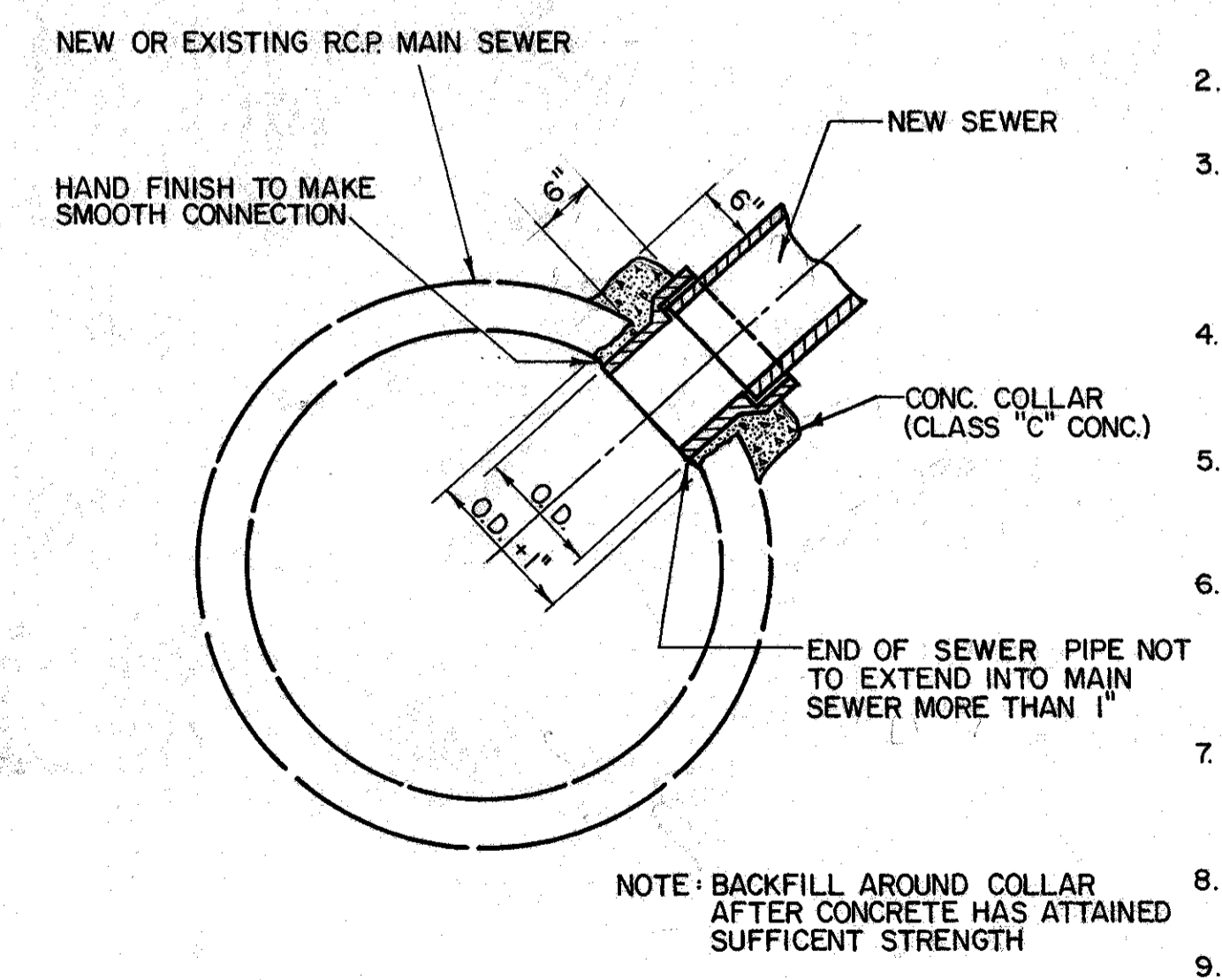


**STEEL WALL THIMBLE**  
(TYPICAL OF 4)  
SCALE: 1 1/2" = 1'-0"



**GENERAL NOTES**

1. CONCRETE SHALL HAVE A MINIMUM COMPRESSION STRENGTH OF 4000 POUNDS PER SQUARE INCH AT 28 DAYS.
2. STEEL DESIGN STRESS  $f_s = 20,000$  PSI
3. CONCRETE DETAILS NOT SHOWN OR SPECIFIED SHALL BE IN ACCORDANCE WITH THE "BUILDING CODE REQUIREMENTS" FOR REINFORCED CONCRETE" ACI 318-77
4. ALL REINFORCING STEEL SPLICES SHALL BE 30 BAR DIAMETERS AND NOT LESS THAN 16 INCHES.
5. WATERSTOP SHALL BE P.V.C. SERRATED TYPE WITHOUT CENTER BULB NOT LESS THAN 6" WIDTH AND 3/8" THICK.
6. MINIMUM CONCRETE COVER FOR REINFORCING STEEL:  
A) CONCRETE POURED ON GROUND ----- 3"  
B) FORMED SURFACES EXPOSED TO EARTH, WATER & WEATHER ----- 2"
7. STRUCTURAL SHAPES AND PLATES SHALL CONFORM TO ASTM A 36 SPECIFICATIONS.
8. WELDING ELECTRODES SHALL BE E 70 XX.
9. DESIGN, DETAILS AND FABRICATION SHALL CONFORM TO THE 8TH EDITION OF THE A.I.S.C. MANUAL. ALL WELDING SHALL CONFORM TO THE REQUIREMENTS OF THE AMERICAN WELDING SOCIETY.
10. MANHOLE STEPS SHALL CONFORM TO O.D.O.T. SPEC. 711.30, 711.31 OR 711.13.
11. STEEL SHEET PILING TO BE SP-4, MP-112 OR EQUAL AND CONFORM TO O.D.O.T. SPEC. 711.03.



**FIELD TEE CONNECTION**  
NO SCALE