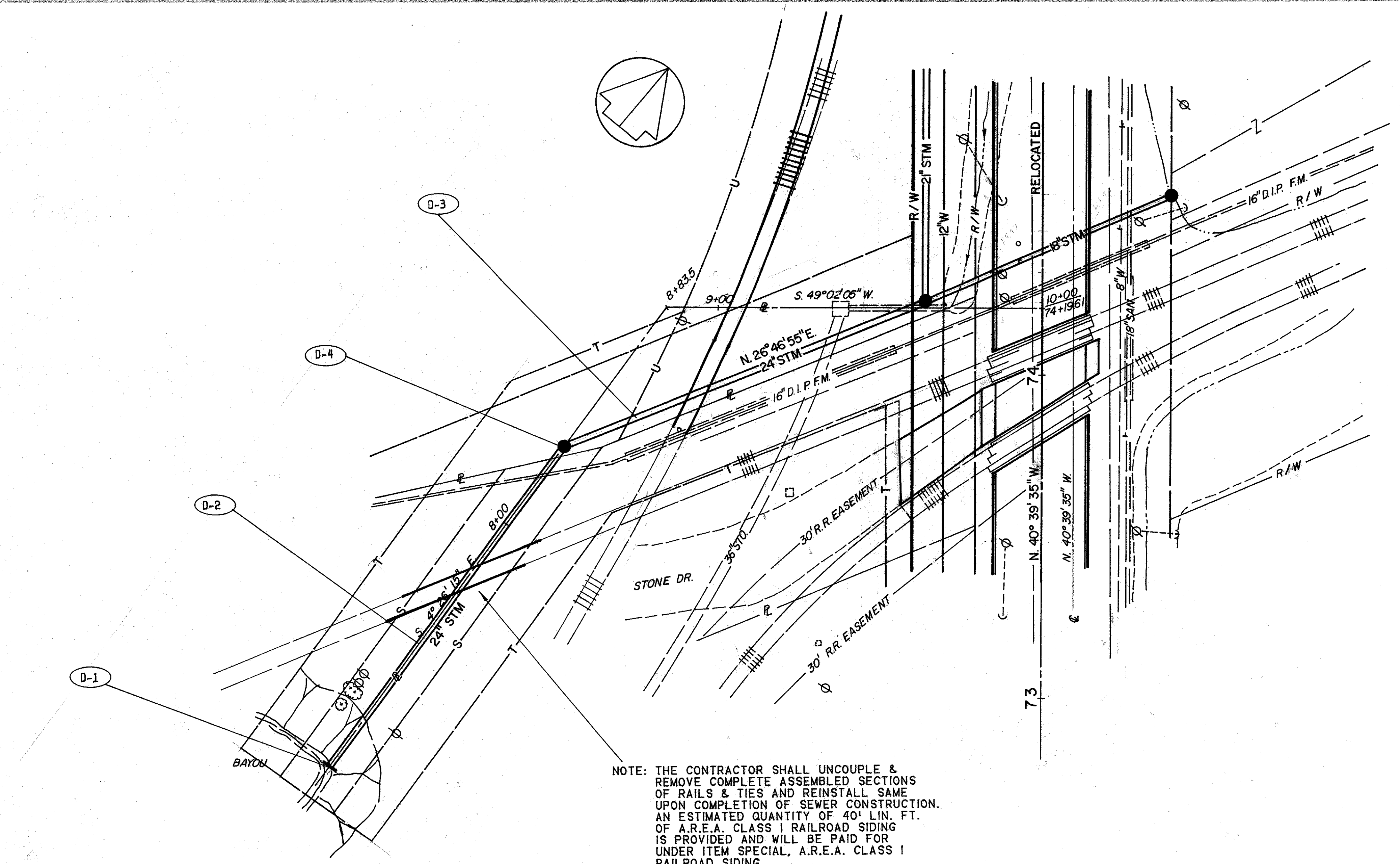


SEE SHEET No. 28



NOTE: THE CONTRACTOR SHALL UNCOUPLE & REMOVE COMPLETE ASSEMBLED SECTIONS OF RAILS & TIES AND REINSTALL SAME UPON COMPLETION OF SEWER CONSTRUCTION. AN ESTIMATED QUANTITY OF 40' LIN. FT. OF A.R.E.A. CLASS I RAILROAD SIDING IS PROVIDED AND WILL BE PAID FOR UNDER ITEM SPECIAL, A.R.E.A. CLASS I RAILROAD SIDING.

*706.02, 2000 D-Load

DRAINAGE		*706.02, 2000 D-Load			
REF	LOCATION	CY.	LF.	EA.	LF
D-1	B/L 7+07	0.43			
D-2	B/L 7+07-8+30.69		124		
D-3	B/L 8+30.69-C/L 74+22.79, 36' L.		96		25
D-4	B/L 8+30.69			1	
TOTALS		0.43	220	1	25

