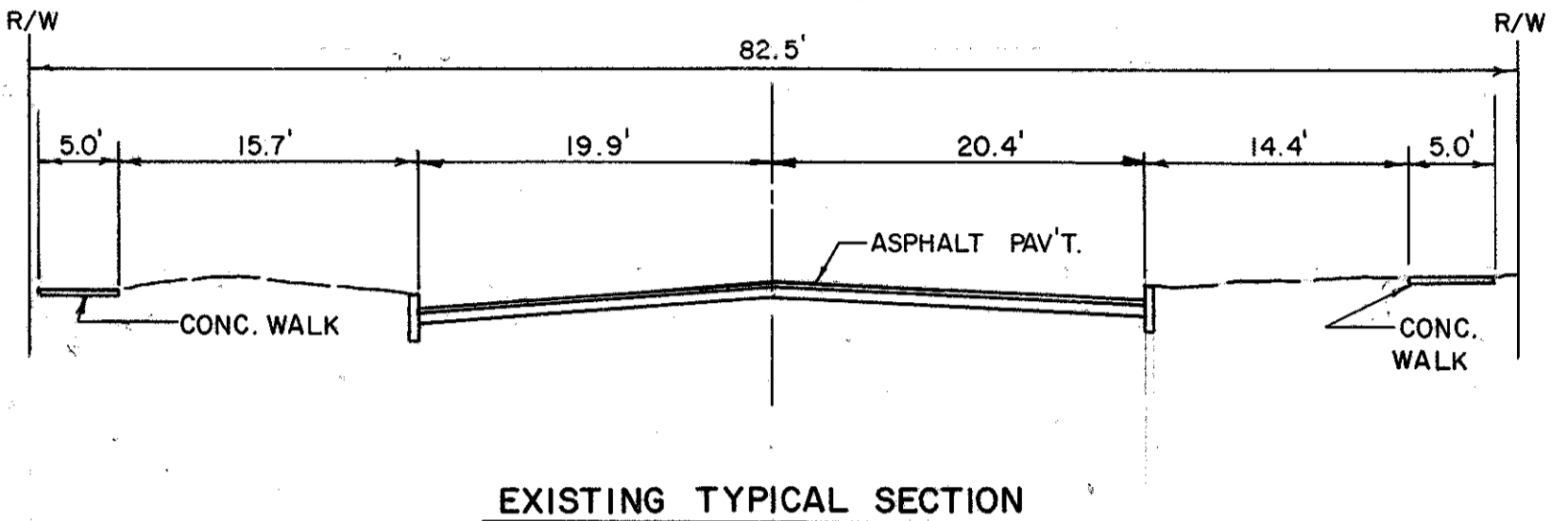
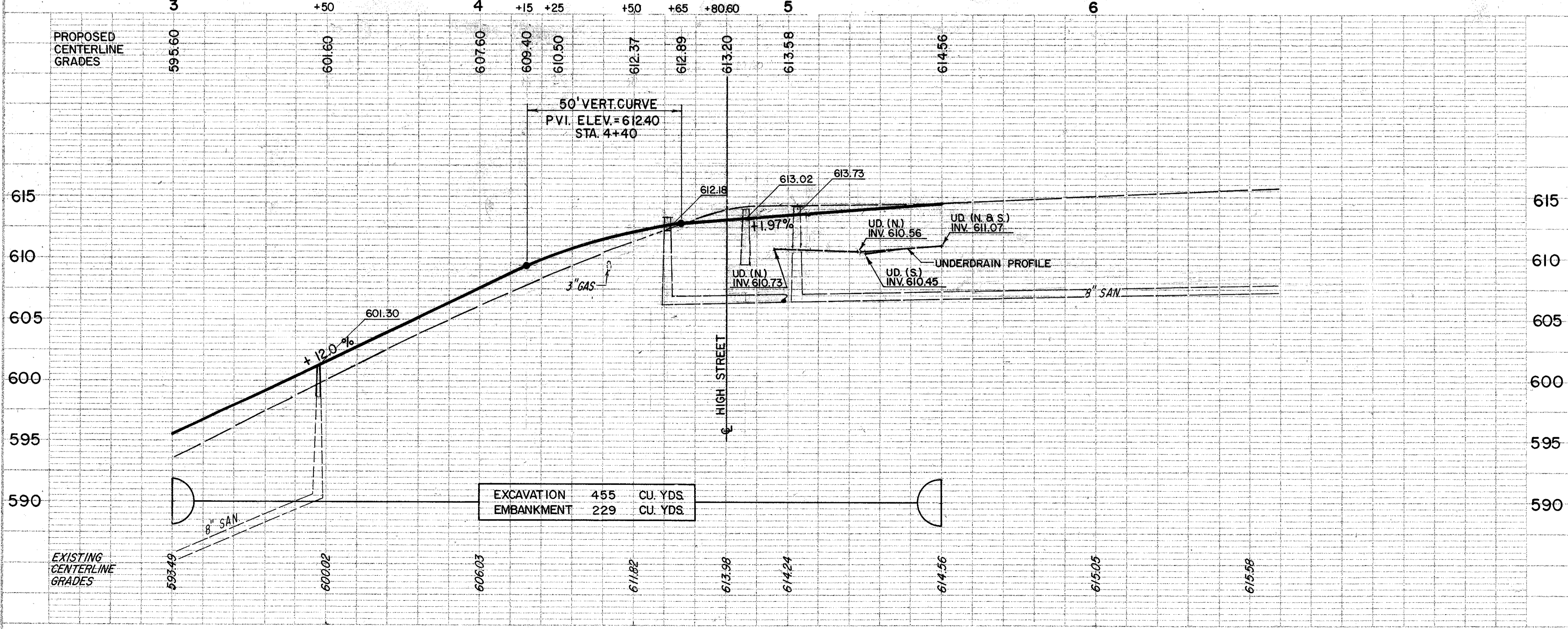


REF	LOCATION	EA.	EA.	EA.	EA.	EA.
604	WATER VALVE BOX ADJUSTED TO GRADE	EA.	EA.	1	1	1
604	WATER VALVE MANHOLE ADJUSTED TO GRADE	EA.	EA.	1	1	1
TOTALS				3	3	3



REF	LOCATION	EA.	EA.	EA.	EA.	EA.	EA.
605	6" UNCLASSIFIED PIPE UNDERDRAIN, AS PER PL.	LF.	LF.	18	16		34
605	6" SHALLOW PIPE UNDERDRAIN, AS PER PL.	LF.	LF.	165	168		333
604	MANHOLE RECONSTRUCTED TO GRADE	EA.	EA.	1			1
604	CATCH BASIN STD. NO. 3A, MOD AS PER PLAN	EA.	EA.			1	1
603	6" CONDUIT TYPE F, AS PER PLAN	LF.	LF.	10	10		20
603	12" CONDUIT TYPE B, AS PER PLAN	LF.	LF.		39	48	87
TOTALS							



REF	LOCATION	EA.	EA.	EA.	EA.	EA.	EA.
D-1	3-47.5, C/L (SANITARY)	EA.	EA.				
D-2	3-00-4+54, R.	EA.	EA.				
D-3	3-00-4+80, L.	EA.	EA.				
D-4	5-22-5+50, L.	EA.	EA.				
D-5	5-22-5+50, R.	EA.	EA.				
D-6	4-86.5, 10.3'L. -5+23, 19.9'L.	EA.	EA.				
D-7	5-23, 19.9'L.	EA.	EA.				
D-8	4-86.5, 10.3'L. -5+23.5, 21.4'L.R.	EA.	EA.				
D-9	5-23.5, 21.4'L.R.	EA.	EA.				
D-10	4-86.5, 10.3'L. (STORM)	EA.	EA.				
D-11	4-63, 18'L. (SANITARY)	EA.	EA.				
D-12	5-03.5, 22'R. (SANITARY)	EA.	EA.				
TOTALS							

REF	LOCATION	WALK REMOVED	CURB REMOVED	FLOODLIGHT REMOVED FOR STORAGE
R-1	4+45-4+67, L.	9F.	LF.	LUMP
R-2	4+42, 4'L. -4+68, 10'L.	230	26	
R-3	4+40, 21'R. -4+55, 35'R.		24	
R-4	4+95-5+50, L. & 5+05-5+50, R.		119	
R-5	4+40, 12'L.			1
TOTALS		230	169	LUMP

DATE: _____
 BY: _____
 CHECKED BY: _____
 DATE: _____

DATE: _____
 BY: _____
 CHECKED BY: _____
 DATE: _____

SECOND STREET