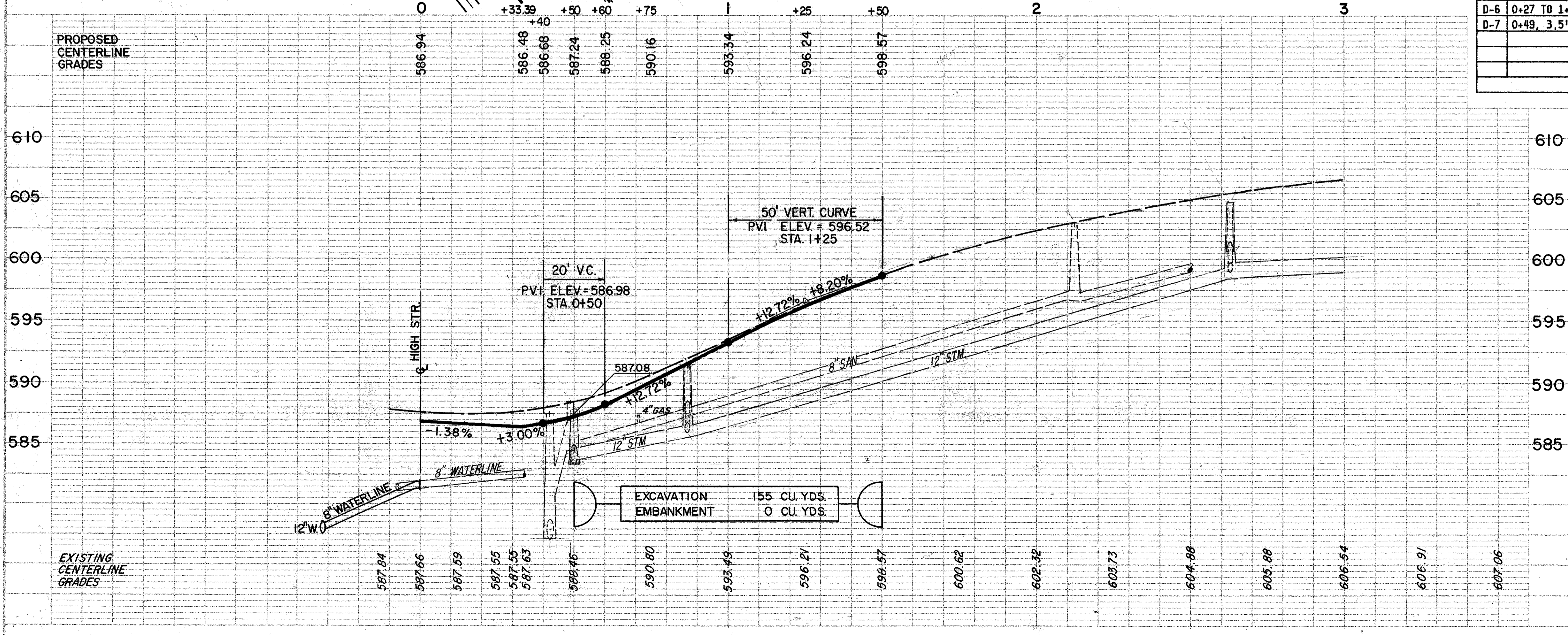


REFERENCE DRGS:

FOR PAVEMENT CROSS-SECTIONS	115
FOR PAVEMENT, SIGNING & STRIPING PLANS	139
FOR STORM SEWER & OUTLET PROFILES	-
FOR STORM CROSS CONNECTION DETAILS	165
FOR RIGHT-OF-WAY PLANS	206-207
FOR DRIVEWAY PROFILES	115
FOR DRIVEWAY SUMMARY & CONSTRUCTION DETAILS	132

SHT NO.

REF	LOCATION	DRAINAGE					
		12" CONDUIT TYPE C, AS PER PLAN LF.	12" CONDUIT TYPE B, AS PER PLAN LF.	6" CONDUIT TYPE F, AS PER PLAN LF.	CATCH BASIN STD. NO. 53 MOD AS PER PL. EA.	MANHOLE RECONSTRUCTED TO GRADE EA.	6" SHALLOW PIPE UNDERDRAIN, AS PER PL. LF.
D-1	0+55, 39'1" R. TO 0+87, 12.7' R.	42					
D-2	0+87, 13.3' L. TO 12.7' R.		24.5				
D-3	0+87, 13.3' L.			1			
D-4	0+87, 12.7' R.			1			
D-5	0+55 TO 1+50, R.			20		90	
D-6	0+27 TO 1+50, L.			20		104	
D-7	0+49, 3.5' L.				1		
TOTALS		42	24.5	40	2	1	194



REF	LOCATION	ROADWAY				
		P.T.P.E. REMOVED, 24" & UNDER CURB & GUTTER REMOVED LF.	SY.	PAVEMENT REMOVED SF.	WALK REMOVED SF.	CURB REMOVED LF.
R-1	0+50 TO 0+87, R.	37				
R-2	0+62 TO 0+87, R.		45			
R-3	0+30 TO 0+43, L.			35.5		
R-4	0+43 TO 0+99, 24' L.				280	
R-5	0+57 TO 0+60, 29' L. TO 40' L.				33	
R-6	0+75 TO 0+80, 29' L. TO 37' L.				40	
R-7	0+97 TO 1+12.5, L.			34		
R-8	1+26 TO 1+31, 29' L. TO 34' L.				25	
R-9	1+09.5 TO 1+50, 24' L.				202.5	
R-10	0+22 TO 1+50, L.					128
R-11	0+87 TO 1+50, R.					63
TOTALS		37	45	69.5	580.5	191