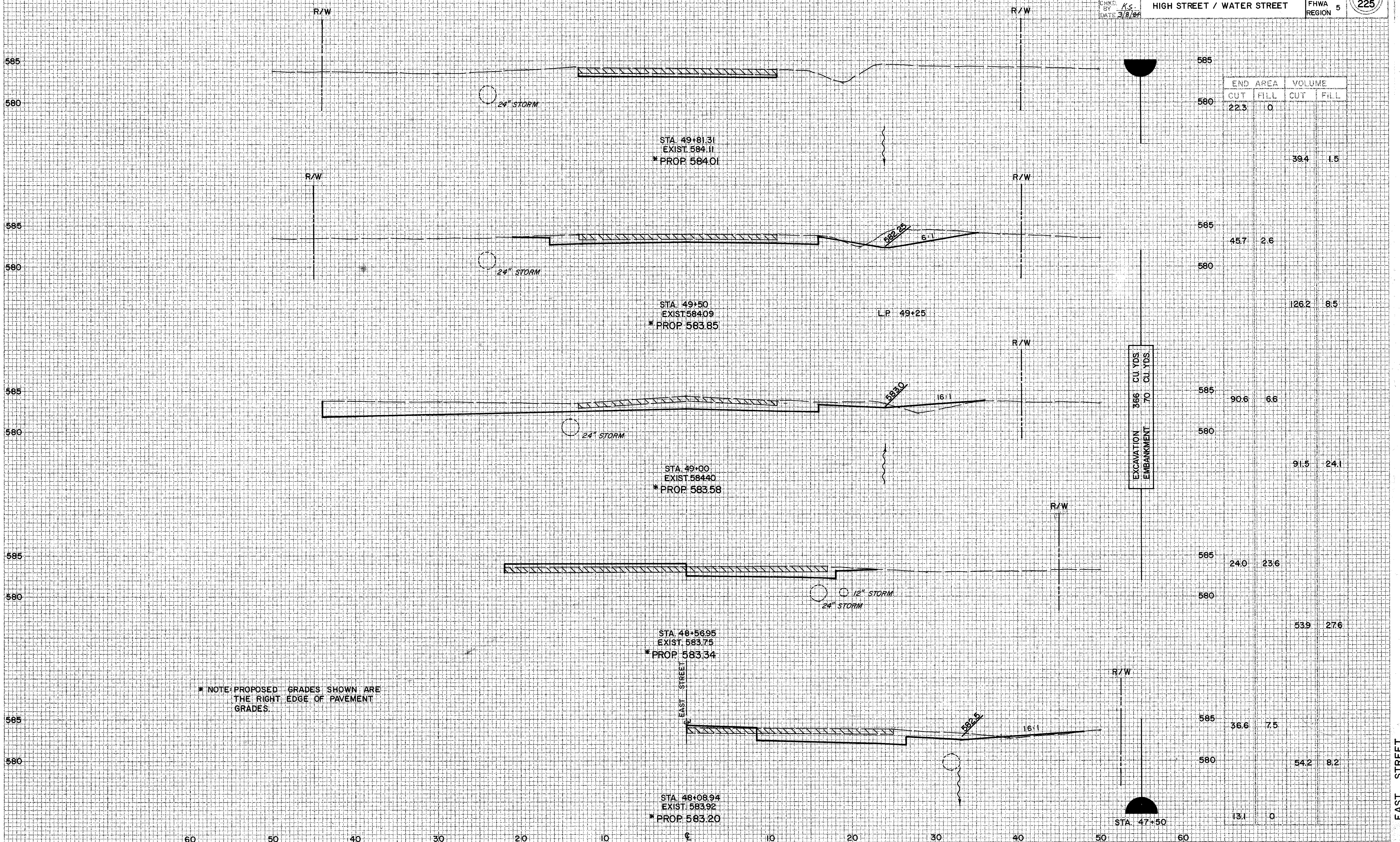


FINAL SURVEY PLANNED
 NO. 1
 NO. 2
 NO. 3
 NO. 4
 NO. 5
 NO. 6
 NO. 7
 NO. 8
 NO. 9
 NO. 10
 NO. 11
 NO. 12
 NO. 13
 NO. 14
 NO. 15
 NO. 16
 NO. 17
 NO. 18
 NO. 19
 NO. 20
 NO. 21
 NO. 22
 NO. 23
 NO. 24
 NO. 25
 NO. 26
 NO. 27
 NO. 28
 NO. 29
 NO. 30
 NO. 31
 NO. 32
 NO. 33
 NO. 34
 NO. 35
 NO. 36
 NO. 37
 NO. 38
 NO. 39
 NO. 40
 NO. 41
 NO. 42
 NO. 43
 NO. 44
 NO. 45
 NO. 46
 NO. 47
 NO. 48
 NO. 49
 NO. 50
 NO. 51
 NO. 52
 NO. 53
 NO. 54
 NO. 55
 NO. 56
 NO. 57
 NO. 58
 NO. 59
 NO. 60
 NO. 61
 NO. 62
 NO. 63
 NO. 64
 NO. 65
 NO. 66
 NO. 67
 NO. 68
 NO. 69
 NO. 70
 NO. 71
 NO. 72
 NO. 73
 NO. 74
 NO. 75
 NO. 76
 NO. 77
 NO. 78
 NO. 79
 NO. 80
 NO. 81
 NO. 82
 NO. 83
 NO. 84
 NO. 85
 NO. 86
 NO. 87
 NO. 88
 NO. 89
 NO. 90
 NO. 91
 NO. 92
 NO. 93
 NO. 94
 NO. 95
 NO. 96
 NO. 97
 NO. 98
 NO. 99
 NO. 100

ORIGINAL SURVEY PLANNED
 NO. 1
 NO. 2
 NO. 3
 NO. 4
 NO. 5
 NO. 6
 NO. 7
 NO. 8
 NO. 9
 NO. 10
 NO. 11
 NO. 12
 NO. 13
 NO. 14
 NO. 15
 NO. 16
 NO. 17
 NO. 18
 NO. 19
 NO. 20
 NO. 21
 NO. 22
 NO. 23
 NO. 24
 NO. 25
 NO. 26
 NO. 27
 NO. 28
 NO. 29
 NO. 30
 NO. 31
 NO. 32
 NO. 33
 NO. 34
 NO. 35
 NO. 36
 NO. 37
 NO. 38
 NO. 39
 NO. 40
 NO. 41
 NO. 42
 NO. 43
 NO. 44
 NO. 45
 NO. 46
 NO. 47
 NO. 48
 NO. 49
 NO. 50
 NO. 51
 NO. 52
 NO. 53
 NO. 54
 NO. 55
 NO. 56
 NO. 57
 NO. 58
 NO. 59
 NO. 60
 NO. 61
 NO. 62
 NO. 63
 NO. 64
 NO. 65
 NO. 66
 NO. 67
 NO. 68
 NO. 69
 NO. 70
 NO. 71
 NO. 72
 NO. 73
 NO. 74
 NO. 75
 NO. 76
 NO. 77
 NO. 78
 NO. 79
 NO. 80
 NO. 81
 NO. 82
 NO. 83
 NO. 84
 NO. 85
 NO. 86
 NO. 87
 NO. 88
 NO. 89
 NO. 90
 NO. 91
 NO. 92
 NO. 93
 NO. 94
 NO. 95
 NO. 96
 NO. 97
 NO. 98
 NO. 99
 NO. 100



END	AREA		VOLUME	
	CUT	FILL	CUT	FILL
585	22.3	0		
580			39.4	1.5
585	45.7	2.6		
580			126.2	8.5
585	90.6	6.6		
580			91.5	24.1
585	24.0	23.6		
580			53.9	27.6
585	36.6	7.5		
580			54.2	8.2
585	13.1	0		

* NOTE: PROPOSED GRADES SHOWN ARE THE RIGHT EDGE OF PAVEMENT GRADES.

EAST STREET