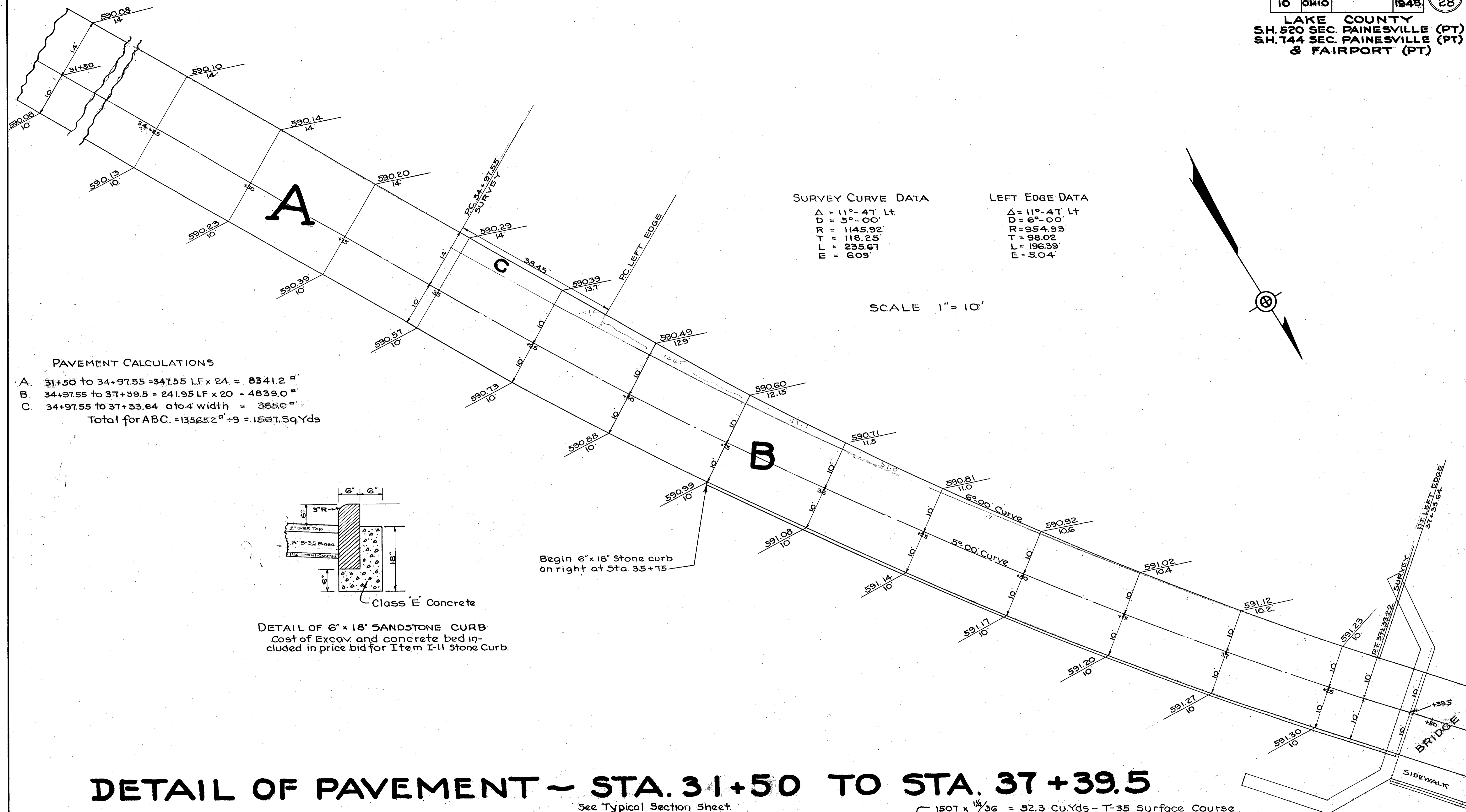


LAKE COUNTY
S.H. 520 SEC. PAINESVILLE (PT)
S.H. 144 SEC. PAINESVILLE (PT)
& FAIRPORT (PT)



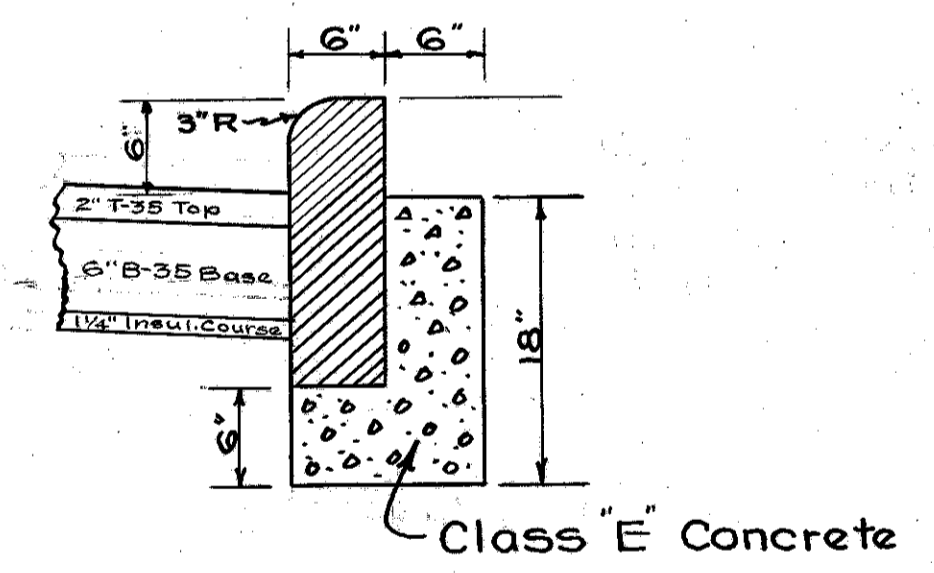
SURVEY CURVE DATA
 $\Delta = 11^\circ - 47' \text{ Lt}$
 $D = 5^\circ - 00'$
 $R = 1145.92'$
 $T = 118.25'$
 $L = 235.67'$
 $E = 6.09'$

LEFT EDGE DATA
 $\Delta = 11^\circ - 47' \text{ Lt}$
 $D = 6^\circ - 00'$
 $R = 954.93'$
 $T = 98.02'$
 $L = 196.39'$
 $E = 5.04'$

SCALE 1" = 10'

PAVEMENT CALCULATIONS

- A. 31+50 to 34+97.55 = 347.55 LF x 24" = 8341.2 sq ft
 - B. 34+97.55 to 37+39.5 = 241.95 LF x 20" = 4839.0 sq ft
 - C. 34+97.55 to 37+33.64 6' to 4' width = 365.0 sq ft
- Total for ABC = 13565.2 sq ft + 9" = 1507.7 Sq. Yds



DETAIL OF 6" x 18" SANDSTONE CURB
 Cost of Excav. and concrete bed included in price bid for Item I-11 Stone Curb.

Begin 6" x 18" Stone curb on right at Sta. 35+75

DETAIL OF PAVEMENT ~ STA. 31+50 TO STA. 37+39.5

See Typical Section Sheet.

NEW PAVEMENT ~ 1507. SQ. YDS = $1507 \times \frac{1}{36} = 52.3 \text{ Cu. Yds} \sim \text{T-35 Surface Course.}$
6" x 18" STONE CURB ~ 165 LIN. FT. = $1507 \times \frac{3}{4} \times \frac{1}{36} = 31.4 \text{ Cu. Yds.} \sim \text{B-35 Leveling Course.}$
I-19 INSULATION COURSE ~ 1507. SQ. YDS = $1507 \times \frac{9}{36} = 251.2 \text{ Cu. Yds.} \sim \text{B-35 Base Course. (2-3")}$