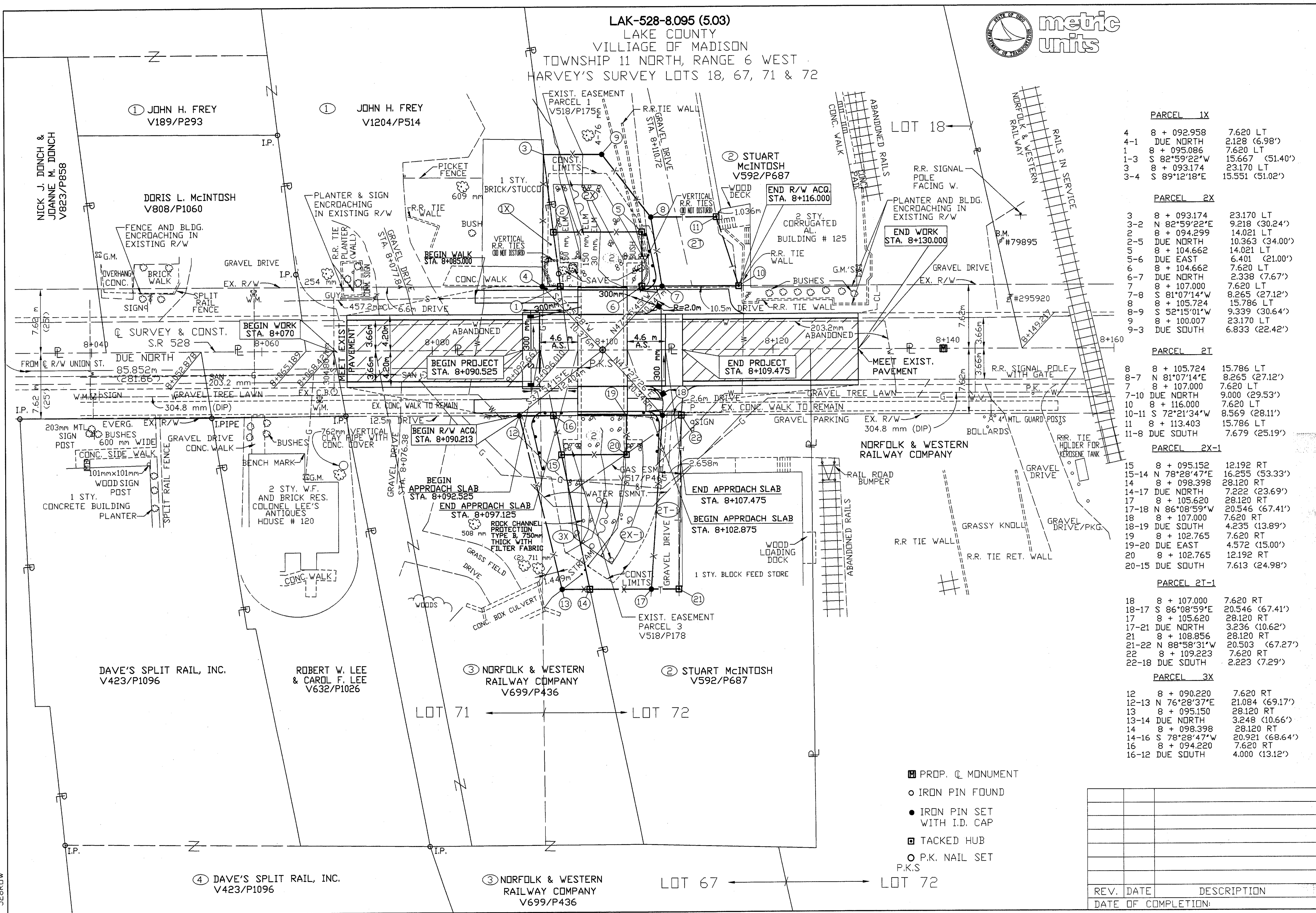
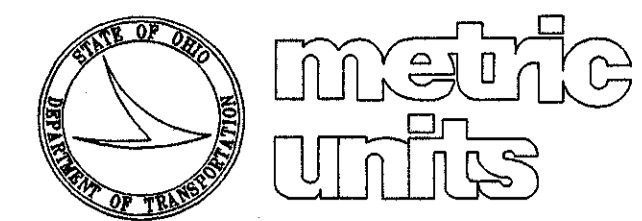


LAK-528-8.095 (5.03)
 LAKE COUNTY
 VILLIAGE OF MADISON
 TOWNSHIP 11 NORTH, RANGE 6 WEST
 HARVEY'S SURVEY LOTS 18, 67, 71 & 72



| PARCEL 1X | | |
|-----------|--------------|-----------------|
| 4 | 8 + 092.958 | 7.620 LT |
| 4-1 | DUE NORTH | 2.128 (6.98') |
| 1 | 8 + 095.086 | 7.620 LT |
| 1-3 | S 82°59'22"W | 15.667 (51.40') |
| 3 | 8 + 093.174 | 23.170 LT |
| 3-4 | S 89°12'18"E | 15.551 (51.02') |

| PARCEL 2X | | |
|-----------|--------------|-----------------|
| 3 | 8 + 093.174 | 23.170 LT |
| 3-2 | N 82°59'22"E | 9.218 (30.24') |
| 2 | 8 + 094.299 | 14.021 LT |
| 2-5 | DUE NORTH | 10.363 (34.00') |
| 5 | 8 + 104.662 | 14.021 LT |
| 5-6 | DUE EAST | 6.401 (21.00') |
| 6 | 8 + 104.662 | 7.620 LT |
| 6-7 | DUE NORTH | 2.338 (7.67') |
| 7 | 8 + 107.000 | 7.620 LT |
| 7-8 | S 81°07'14"W | 8.265 (27.12') |
| 8 | 8 + 105.724 | 15.786 LT |
| 8-9 | S 52°15'01"W | 9.339 (30.64') |
| 9 | 8 + 100.007 | 23.170 LT |
| 9-3 | DUE SOUTH | 6.833 (22.42') |

| PARCEL 2T | | |
|-----------|--------------|----------------|
| 8 | 8 + 105.724 | 15.786 LT |
| 8-7 | N 81°07'14"E | 8.265 (27.12') |
| 7 | 8 + 107.000 | 7.620 LT |
| 7-10 | DUE NORTH | 9.000 (29.53') |
| 10 | 8 + 116.000 | 7.620 LT |
| 10-11 | S 72°21'34"W | 8.569 (28.11') |
| 11 | 8 + 113.403 | 15.786 LT |
| 11-8 | DUE SOUTH | 7.679 (25.19') |

| PARCEL 2X-1 | | |
|-------------|--------------|-----------------|
| 15 | 8 + 095.152 | 12.192 RT |
| 15-14 | N 78°28'47"E | 16.255 (53.33') |
| 14 | 8 + 098.398 | 28.120 RT |
| 14-17 | DUE NORTH | 7.222 (23.69') |
| 17 | 8 + 105.620 | 28.120 RT |
| 17-18 | N 86°08'59"W | 20.546 (67.41') |
| 18 | 8 + 107.000 | 7.620 RT |
| 18-19 | DUE SOUTH | 4.235 (13.89') |
| 19 | 8 + 102.765 | 7.620 RT |
| 19-20 | DUE EAST | 4.572 (15.00') |
| 20 | 8 + 102.765 | 12.192 RT |
| 20-15 | DUE SOUTH | 7.613 (24.98') |

| PARCEL 2T-1 | | |
|-------------|--------------|-----------------|
| 18 | 8 + 107.000 | 7.620 RT |
| 18-17 | S 86°08'59"E | 20.546 (67.41') |
| 17 | 8 + 105.620 | 28.120 RT |
| 17-21 | DUE NORTH | 3.236 (10.62') |
| 21 | 8 + 108.856 | 28.120 RT |
| 21-22 | N 88°58'31"W | 20.503 (67.27') |
| 22 | 8 + 109.223 | 7.620 RT |
| 22-18 | DUE SOUTH | 2.223 (7.29') |

| PARCEL 3X | | |
|-----------|--------------|-----------------|
| 12 | 8 + 090.220 | 7.620 RT |
| 12-13 | N 76°28'37"E | 21.084 (69.17') |
| 13 | 8 + 095.150 | 28.120 RT |
| 13-14 | DUE NORTH | 3.248 (10.66') |
| 14 | 8 + 098.398 | 28.120 RT |
| 14-16 | S 78°28'47"W | 20.921 (68.64') |
| 16 | 8 + 094.220 | 7.620 RT |
| 16-12 | DUE SOUTH | 4.000 (13.12') |

- PROP. Q MONUMENT
- IRON PIN FOUND
- IRON PIN SET WITH I.D. CAP
- TACKED HUB
- P.K. NAIL SET P.K.S

| REV. | DATE | DESCRIPTION |
|------|------|-------------|
| | | |
| | | |
| | | |
| | | |
| | | |

P.I.D. NO. 12833
 RIGHT OF WAY PLAN
 STA. 8+040 TO STA. 8+160
 LAK-528-8.095 (5.03)
 3/4
 32/33