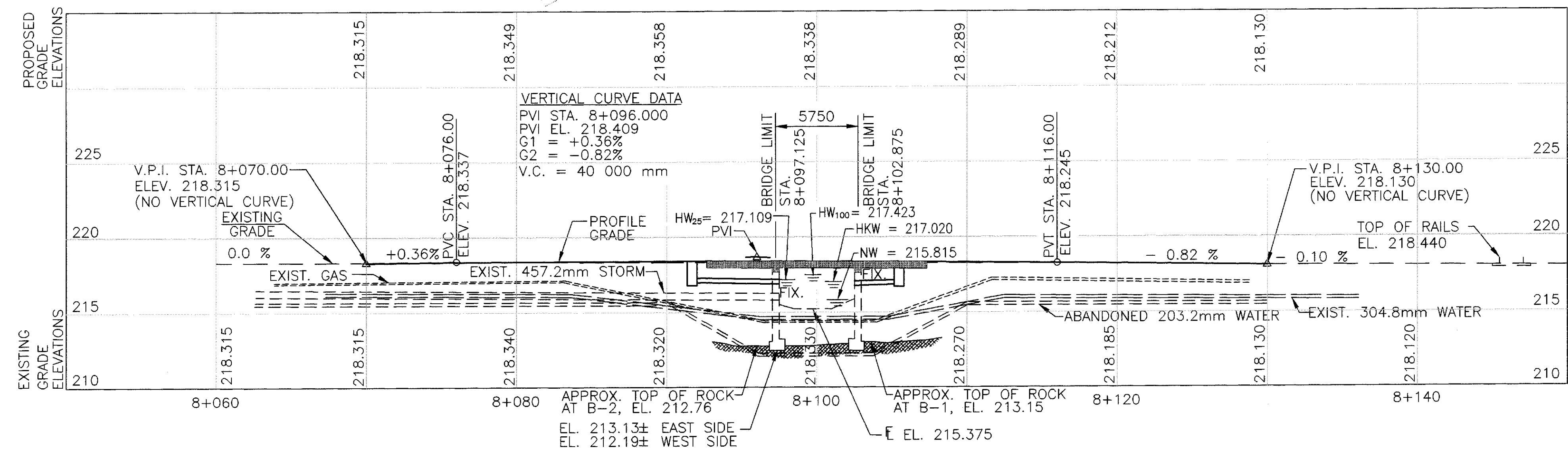


PLAN



PROFILE ALONG C SURVEY & CONSTRUCTION S.R. 528

BENCH MARK

'X' ON N.E. CORNER CONCRETE POLE # 79895
FOUNDATION, STA. 8+147, 13 m LT. EL. 218.095

BENCH MARK

N.W. CORNER CONCRETE PORCH HOUSE NO. 120
STA. 8+065, 12m RT., EL. 218.380

DESIGN TRAFFIC DATA

CURRENT YEAR (1996) ADT	11 200
DESIGN YEAR (2016) ADT	15 200
DESIGN YEAR (2016) ADTT	304

HYDRAULIC DATA

DRAINAGE AREA = 307.6 ha.
CLEARANCE TO BOT. OF STRUCTURE = 537 mm

DESIGN YEAR	DISCHARGE	VELOCITY	BACKWATER ELEVATION
25	10.353 cms*	2.98 mps	217.109 m
100	14.514 cms*	3.32 mps	217.423 m

* U.S.G.S. REPORT 89-4126 (RURAL)

EXISTING STRUCTURE

TYPE:	SINGLE SPAN SLAB BRIDGE ON FULL HEIGHT CONCRETE ABUTMENT BEARING ON ROCK
SPAN:	4950 F/F OF ABUTMENTS
ROADWAY WIDTH:	15 200 F/F OF GUARDRAILS
DESIGN LOADING:	CF-130
SKIEW:	NONE
ALIGNMENT:	TANGENT
WEARING SURFACE:	ASPHALT
APPROACH SLABS:	AS-1-54, 4570 mm LONG
YEAR BUILT:	1961
CROWN:	0.016
STRUCTURE FILE NO.:	4306090

PROPOSED STRUCTURE

TYPE:	SINGLE SPAN PRESTRESSED CONCRETE COMPOSITE BOX BEAMS ON MODIFIED EXIST. ABUTMENTS
SPAN:	5400 C/C OF BEARINGS
ROADWAY WIDTH:	8400 TOE/TOE OF CURBS
SIDEWALK:	3000 EACH SIDE
LOADING	MS18 AND ALTERNATE MILITARY LOADING
SKIEW:	NONE
ALIGNMENT:	TANGENT
APPROACH SLAB:	4600mm (AS-1-81M)
WEARING SURFACE:	MONOLITHIC CONC.
CROWN:	0.016
LATITUDE:	41°46'27.3"
LONGITUDE:	81°02'51.8"

NOTES

- ALL DIMENSIONS ARE GIVEN IN MILLIMETERS AND ALL STATIONS AND ELEVATIONS ARE GIVEN IN METERS.
- EARTHWORK LIMITS SHOWN ARE APPROXIMATE. ACTUAL SLOPES SHALL CONFORM TO PLAN CROSS SECTION.

DATE 6/96
REVIEWED RC
STRUCTURE FILE NUMBER 4306090

DRAWN SU
DESIGNED NT
CHECKED DG

LAKE COUNTY
STA. 8+097.125
STA. 8+102.875

SITE PLAN
BRIDGE NO. LAK-528-80971
OVER A TRIBUTARY OF ARCOLA CREEK

LAK-528-8.095

1/12

18
33