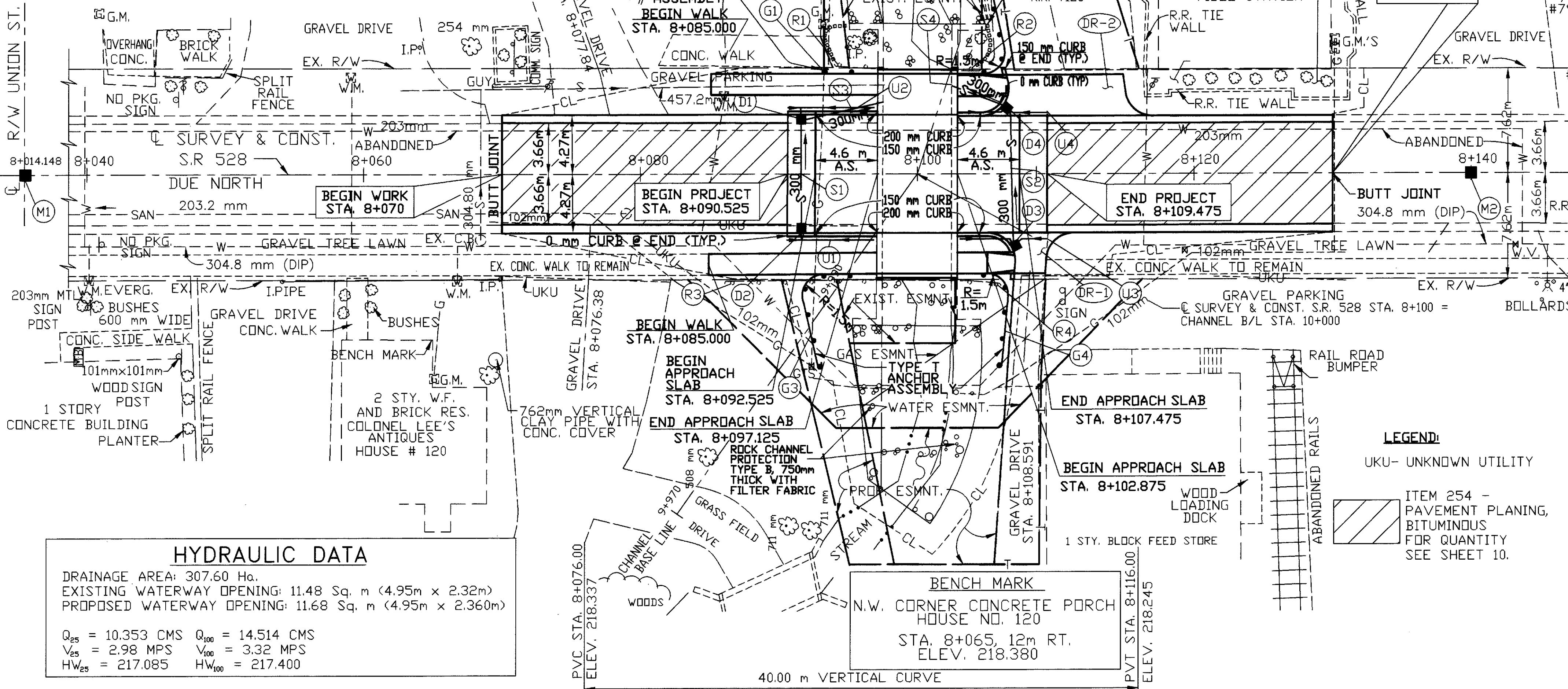
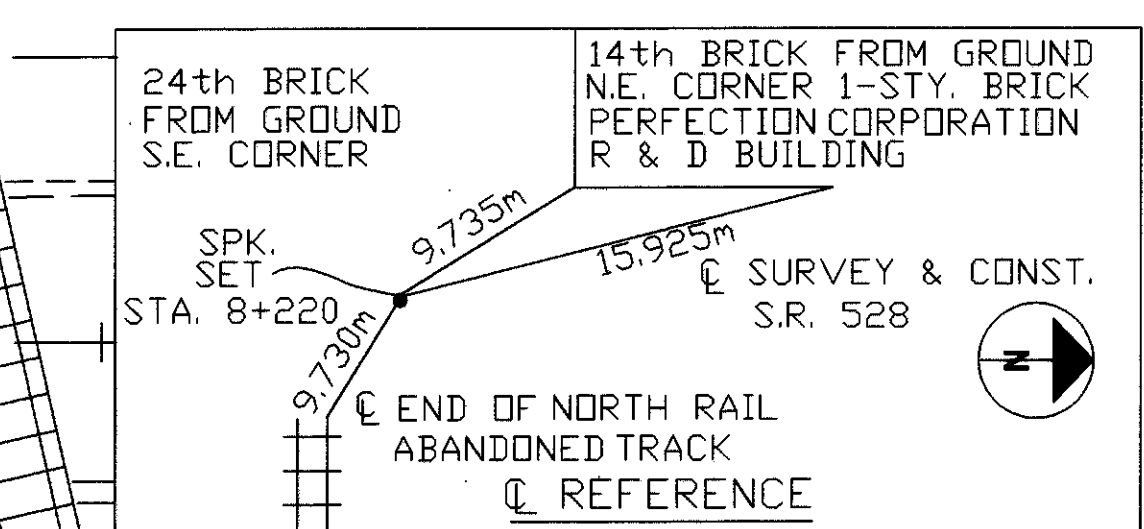
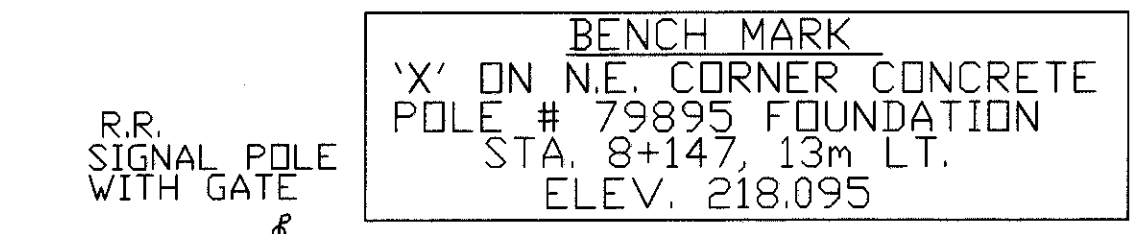
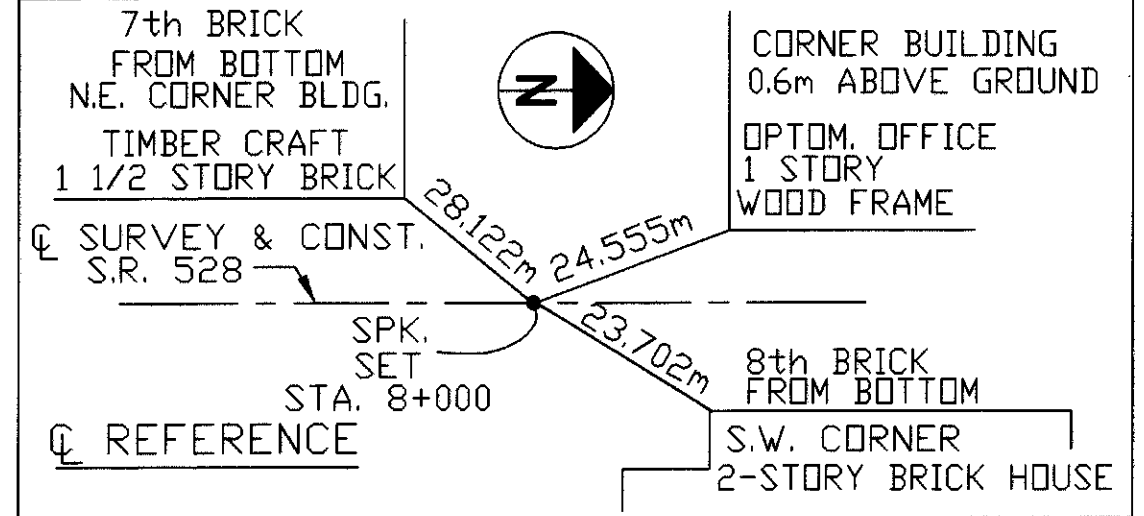


PROPOSED STRUCTURE

TYPE: SINGLE SPAN PRESTRESSED CONCRETE COMPOSITE BOX BEAMS ON MODIFIED EXIST. ABUTMENTS
 SPANS: 5.4 m C/C OF BEARINGS
 ROADWAY: 8.40m F/F CURB
 SIDEWALK: 3.0m EACH SIDE
 ALIGNMENTS: TANGENT (EXISTING)
 APPROACH SLABS: 4.6 m
 SKEW: NONE
 WEARING SURFACE: MONOLITHIC CONCRETE
 LOADING: HS-20-44
 LATITUDE: 81°02'51.8" LONGITUDE: 41°46'27.3"

EXISTING STRUCTURE

TYPE: SINGLE SPAN REINFORCED CONCRETE SLAB BRIDGE ON WALL TYPE
 SPANS: 4.95(±) m F/F ABUTMENTS
 ROADWAY: 15.2(±) m F/F RAILS
 ALIGNMENT: TANGENT
 SKEW: NONE
 CROWN: 0.016(±) (3/16" PER FOOT)
 WEARING SURFACE: ASPHALT
 APPROACH SLABS: 4.5(±) m
 LOADING: CF-130 (5-20-46)
 DATE BUILT: 1963
 STRUCTURE FILE NO.: 4306090



HYDRAULIC DATA

DRAINAGE AREA: 307.60 Ha.
 EXISTING WATERWAY OPENING: 11.48 Sq. m (4.95m x 2.32m)
 PROPOSED WATERWAY OPENING: 11.68 Sq. m (4.95m x 2.360m)

$Q_{25} = 10.353$ CMS $Q_{100} = 14.514$ CMS
 $V_{25} = 2.98$ MPS $V_{100} = 3.32$ MPS
 $H_{w25} = 217.085$ $H_{w100} = 217.400$

ESTIMATED QUANTITIES	REMARKS	UNIT	QUANTITY	UNIT PRICE	TOTAL
614	BARRIER REFLECTOR, TYPE A	EACH	8		
605	ANCHOR ASSEMBLY, TYPE T	EACH	4		
603	GUARDRAIL TYPE 5, AS PER PLAN	M	5.715	19.05	109.15
603	150 mm CONDUIT TYPE F, 707.41 NON-PERFORATED ASTM D-3034, SDR35, 707.42 OR 707.33	M	7.62		
605	150 mm SHALLOW PIPE UNDERDRAIN	M	5.715		
604	CATCH BASIN, TYPE 2-2B	EACH	1		
604	MONUMENT ASSEMBLY, AS PER PLAN	EACH	1		
603	300mm CONDUIT, TYPE B	M	7.79		
202	GUARDRAIL REMOVED	M	20.955	27.89	583.50
	TOTALS				

