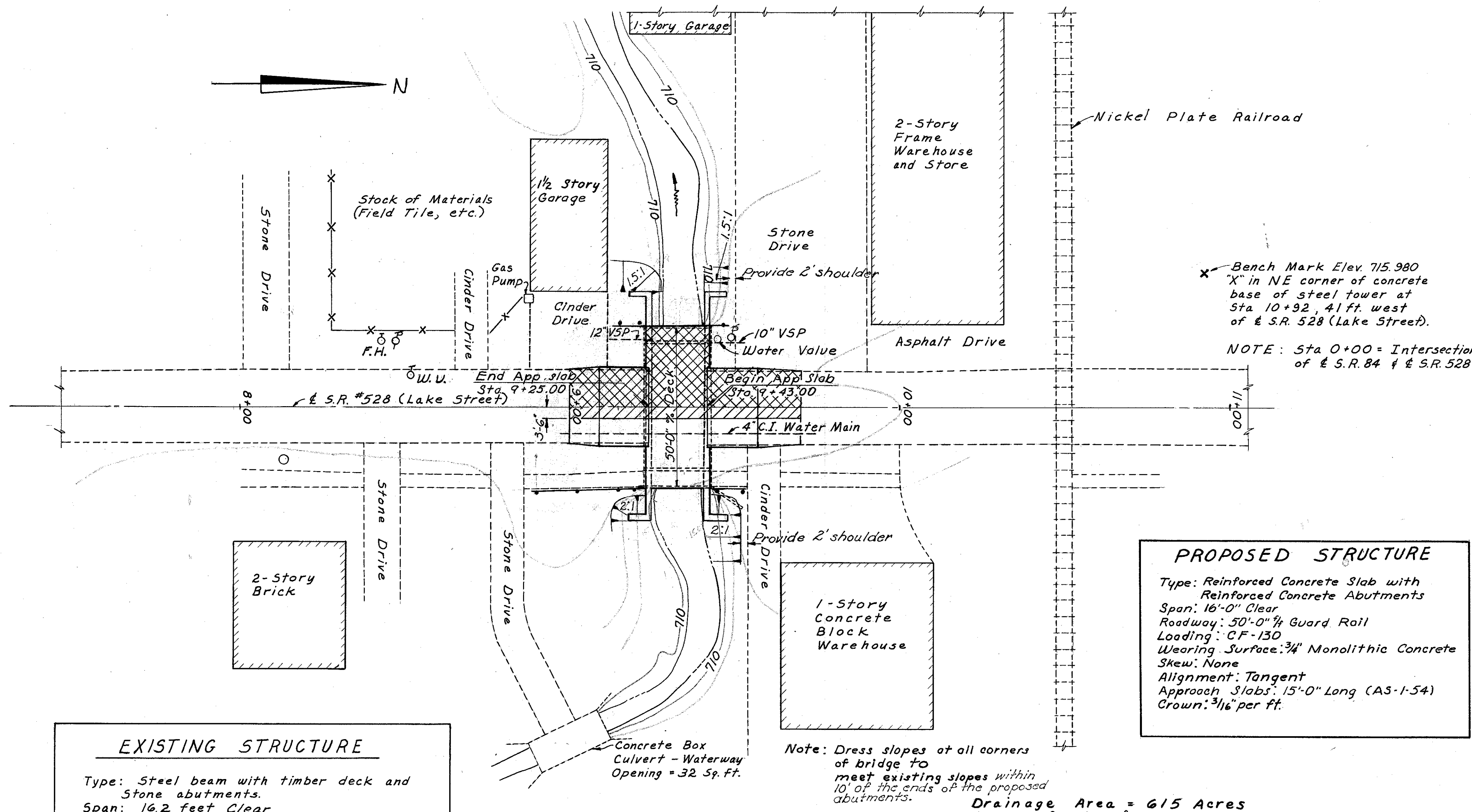


FED. RD. DIVISION	STATE	PROJECT	TYPE FUNDS
2	OHIO		

4  
6

LAKE COUNTY  
LAK-528-5.03



Bench Mark Elev. 715.980  
"X" in NE corner of concrete base of steel tower at Sta 10+92, 41 ft. west of E.S.R. 528 (Lake Street).  
NOTE: Sta 0+00 = Intersection of E.S.R. 84 & E.S.R. 528.

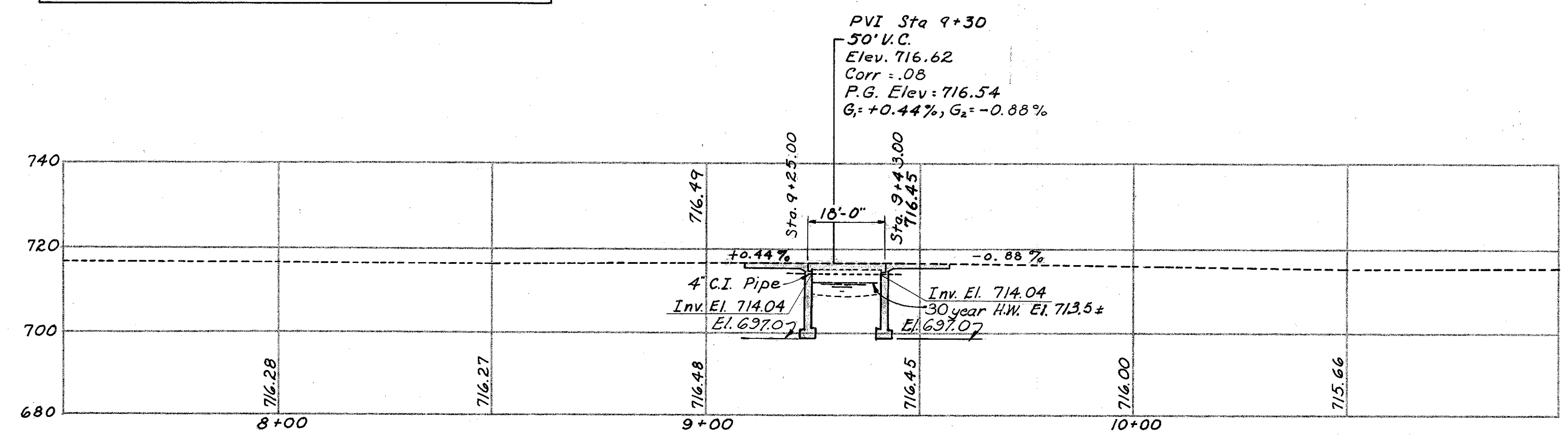
**PROPOSED STRUCTURE**  
Type: Reinforced Concrete Slab with Reinforced Concrete Abutments  
Span: 16'-0" Clear  
Roadway: 50'-0"  $\frac{1}{4}$  Guard Rail  
Loading: C.F-130  
Wearing Surface:  $\frac{3}{4}$ " Monolithic Concrete  
Skew: None  
Alignment: Tangent  
Approach Slabs: 15'-0" Long (AS-1-54)  
Crown:  $\frac{1}{16}$  per ft.

**EXISTING STRUCTURE**  
Type: Steel beam with timber deck and Stone abutments.  
Span: 16.2 feet Clear  
Roadway: 39'-0"  $\frac{1}{4}$  timber curbs with 4' Sidewalk.  
Loading: S-10.8  
Wearing Surface: Asphaltic Concrete  
Skew: 1°-02'-30" Right Forward  
Waterway Opening: 16.2 x 6.3'

Note: Dress slopes of all corners of bridge to meet existing slopes within 10' of the ends of the proposed abutments.  
Drainage Area = 615 Acres  
 $Q_{50} = 600$  c.f.s.,  $V_{50} = 11 \frac{1}{2}$

**PLAN**

Phase I Removal  
Phase I Construction



**PROFILE ON E.S.R. #528**

ALDEN E. STILSON & ASSOCIATES, LIMITED  
CONSULTING ENGINEERS  
COLUMBUS, OHIO

**SITE PLAN**  
BRIDGE N<sup>o</sup> LAK-528-0503

LAKE COUNTY STA. 9+34.00

DESIGNED	DRAWN	TRACED	CHECKED	REVIEWED	DATE	REVISED
SVC.	SVC.			J.E.V.	7/24/60	