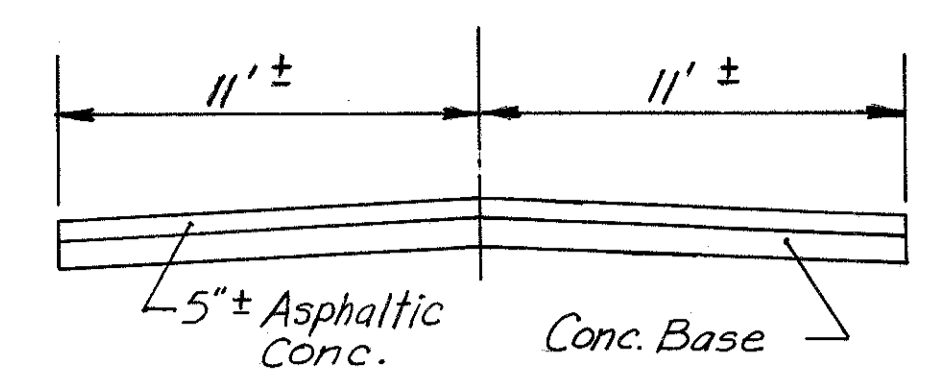


VILLAGE OF MADISON
TOWNSHIP 11 - RANGE 6

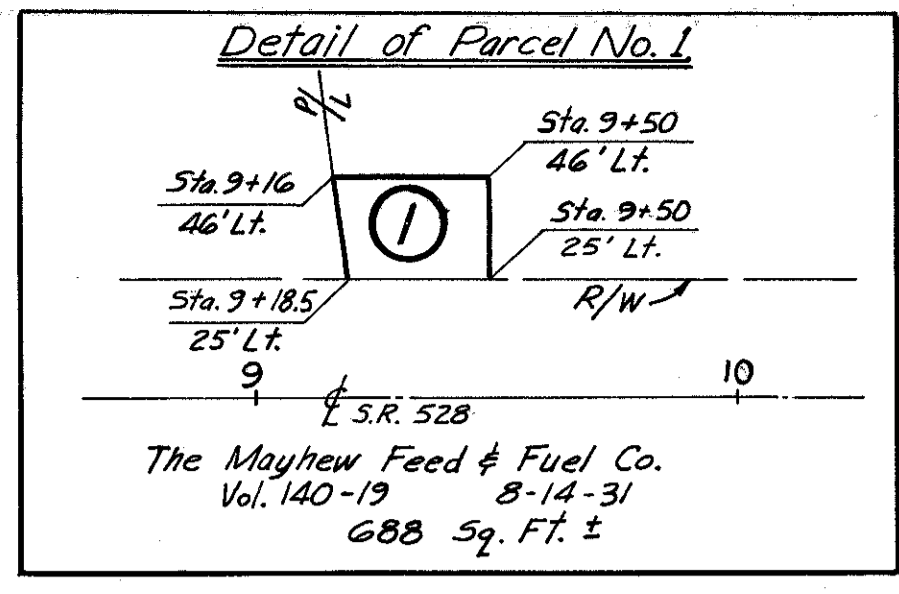
NO. IN PROJECT	SHEET	PROJECT	
2	CHIC		

3
6

LAKE COUNTY
LAK-528-5.03



Typical Section of Existing S.R. 528

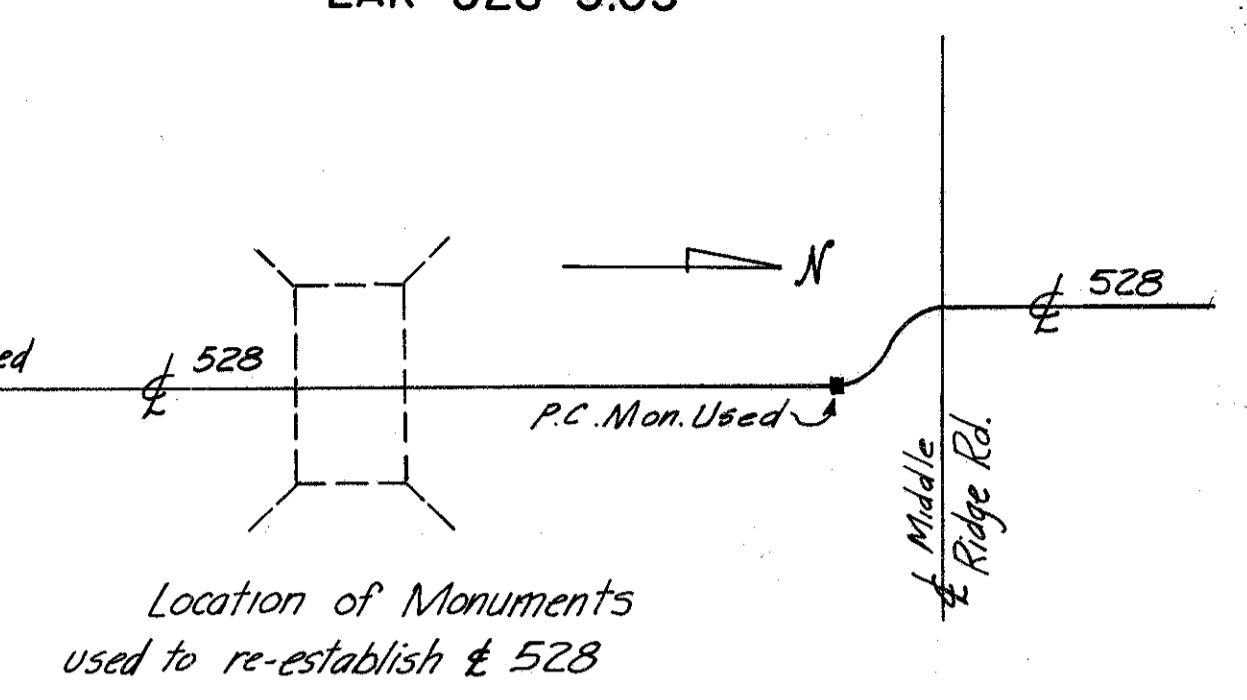
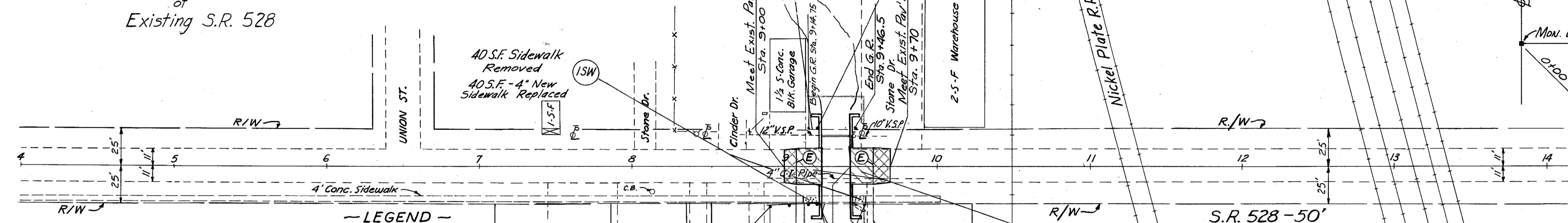


The Mayhew Feed & Fuel Co.
Vol. 140-19 8-14-31
688 Sq. Ft. ±

BM. 715.980
X in N.E. corner conc. base of Steel tower at N.P.R.R.
Sta. 10+92 - 41' Lt.

Mayhew Feed & Fuel Co.

13.25 Lin. Ft. Steel Beam Type (Deep) Guard Rail

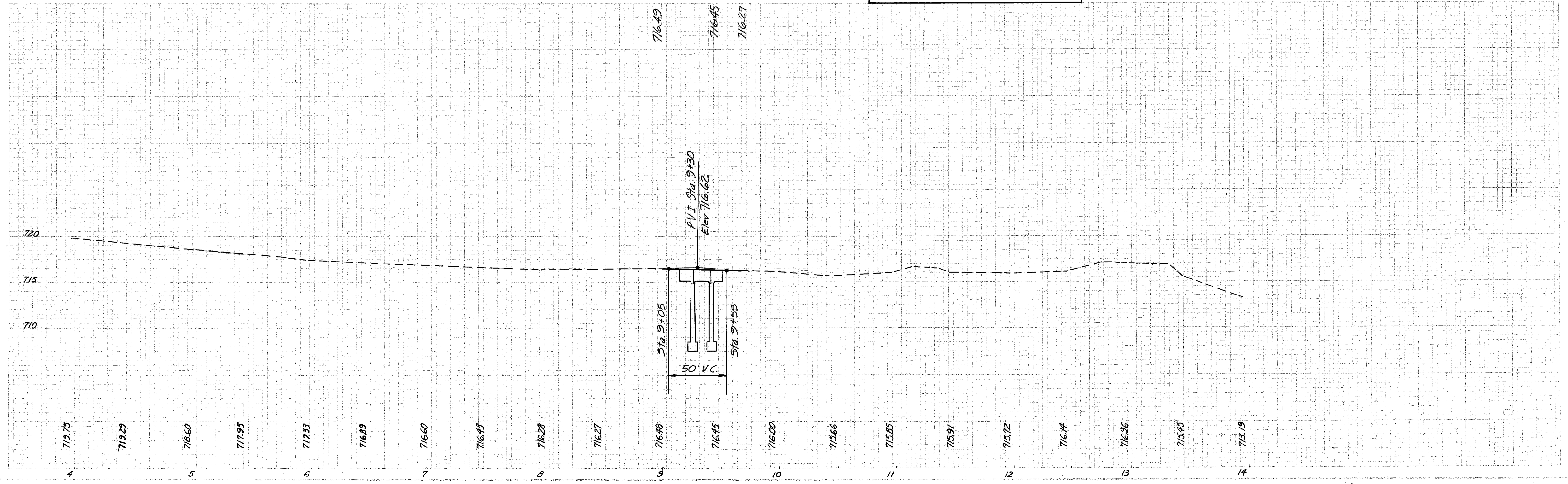
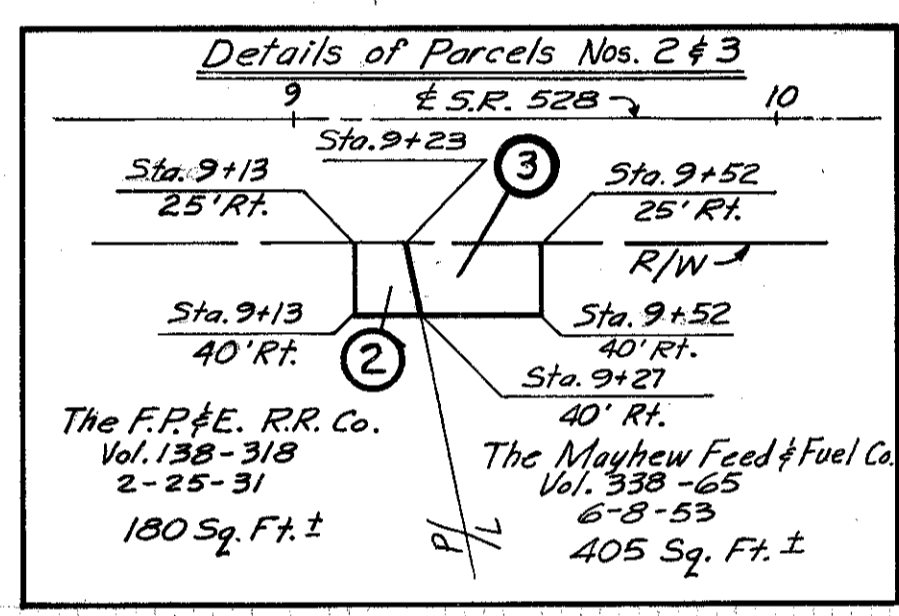


Location of Monuments used to re-establish S.R. 528

PROPOSED STRUCTURE
TYPE: Reinforced Concrete Slab with Reinforced Concrete Abutments.
SPAN: 16'-0" Clear
ROADWAY: 50'-0" 1/2" Guard Rail
LOADING: 5-20-46
WEARING SURFACE: 3/4" Monolithic Conc.
SKEW: Tangent
APPROACH SLABS: 15'-0" Long (A5-1-54)
CROWN: 3/16" per ft. for 25'-0"

- LEGEND —
- Sidewalk to be Removed & Replaced.
 - Existing Pavement to be Removed.
 - 9" T-71 Reinforced Portland Cement Concrete 6" I-22 Subbase I-71-62 S.Y. I-22-11 C.Y.
 - Expansion Joint

EXISTING STRUCTURE
TYPE: Steel beam with timber deck and stone abutments.
SPAN: 16.2 feet clear
ROADWAY: 39'-0" 1/2" timber curbs with 4' Sidewalk
LOADING: S-10.8
WEARING SURFACE: Asphaltic conc.
SKEW: 1°-02'-30" Right Forward



R/W & PLAN & PROFILE STA. 4+00 TO STA. 14+00