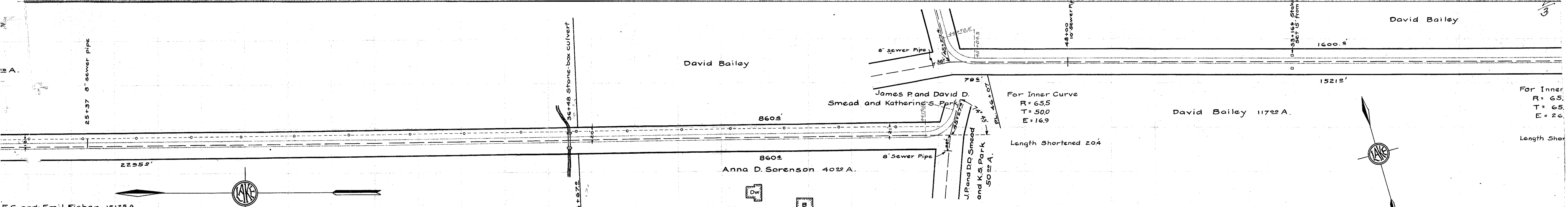
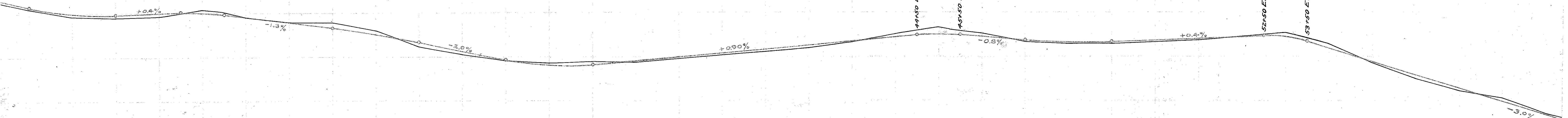


For Inner  
R = 65.  
T = 65.  
E = 26.  
Length Sho



BENCH MARKS

- \*1 + on root of hickory on E side of road - 70' N. of sta. 0+00 - El. 176.32
- \*2 + on root of large maple - 35' E. from  $\epsilon$  road at sta. 7+35 - El. 199.55
- \*3 + on root of maple at sta. 18+75 - 25' E. of  $\epsilon$  of road - El. 199.63
- \*4 + on concrete footing of fence post - E. side, sta. 30+93 - El. 187.54
- \*5 Top of S.E. cor. of parapet of culvert at sta. 36+48 - El. 179.05
- \*6 White + on stone over sewer-pipe - 38' W. sta. 45+27<sup>4</sup> - El. 186.37
- \*7 + on root of maple on N. side of road at sta. 53+27 - El. 186.57
- \*8 White + on stone - W. side of road at sta. 61+28 - El. 160.39
- \*9 + on root of wild-cherry - E. side of road near sta. 65 - El. 151.66
- \*10 + on foundation stone - N.W. corner barn sta. 71+61<sup>4</sup> - El. 114.77
- \*11 S.E. cor. watering trough at sta. 79+70<sup>8</sup> - El. 56.74



24	25	26	27	28	29	30	31	32	33	34	35	36	37	38	39	40	41	42	43	44	45	46	47	48	49	50	51	52	53	54	55	56	57	58	59
191.1	189.5	189.1	189.3	191.0	189.1	188.0	188.0	186.1	182.5	180.8	179.3	178.8	179.1	179.0	179.9	180.7	181.4	182.3	183.4	185.4	186.8	185.4	183.4	183.1	183.0	183.5	183.7	184.6	185.4	182.9	178.6	175.0	172.3	170.6	167.1
192.0	190.45	190.2	190.6	190.79	189.7	188.4	187.1	185.6	183.8	181.8	179.8	178.53	178.7	179.6	180.5	181.4	182.3	183.2	184.1	185.0	185.69	185.1	184.3	183.8	183.9	184.3	184.7	185.1	182.5	179.5	176.5	173.5	170.5	167.5	
191.5	189.95	189.7	190.1	190.29	189.2	187.9	186.6	185.1	183.3	181.3	179.3	178.03	178.2	179.1	180.0	180.9	181.8	182.7	183.6	184.5	185.19	184.6	183.8	183.3	183.4	183.8	184.2	184.6	182.0	179.0	176.0	173.0	170.0	167.0	
.4	.5	.6	.8	.1	.7	.1	.14	1.0	.8	.5	0	.8	.9	.1	.1	.2	.4	.4	.2	.9	1.6	.8	.4	.2	.4	.3	.5	0	.5	.4	1.0	.7	.6	.1	

