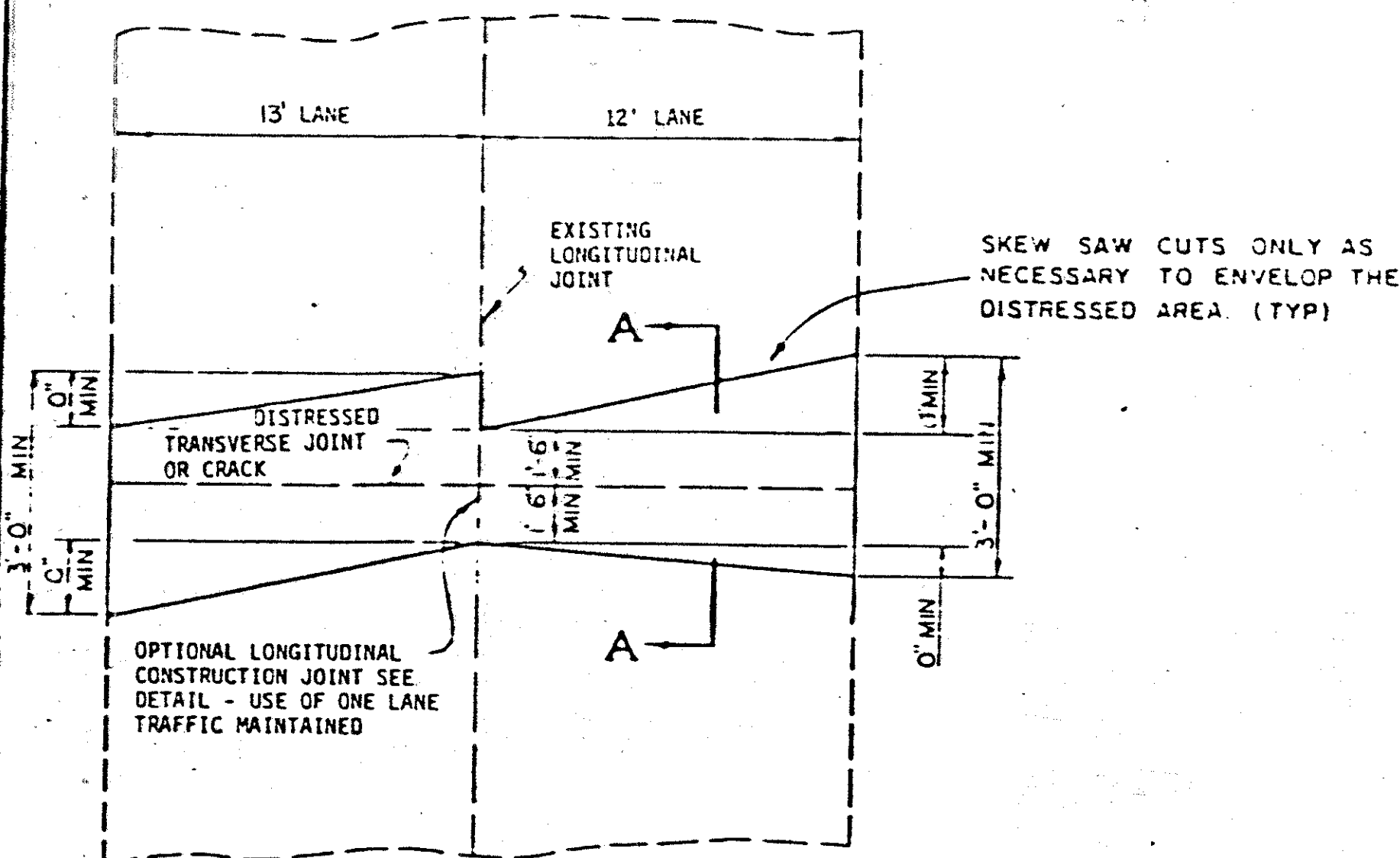
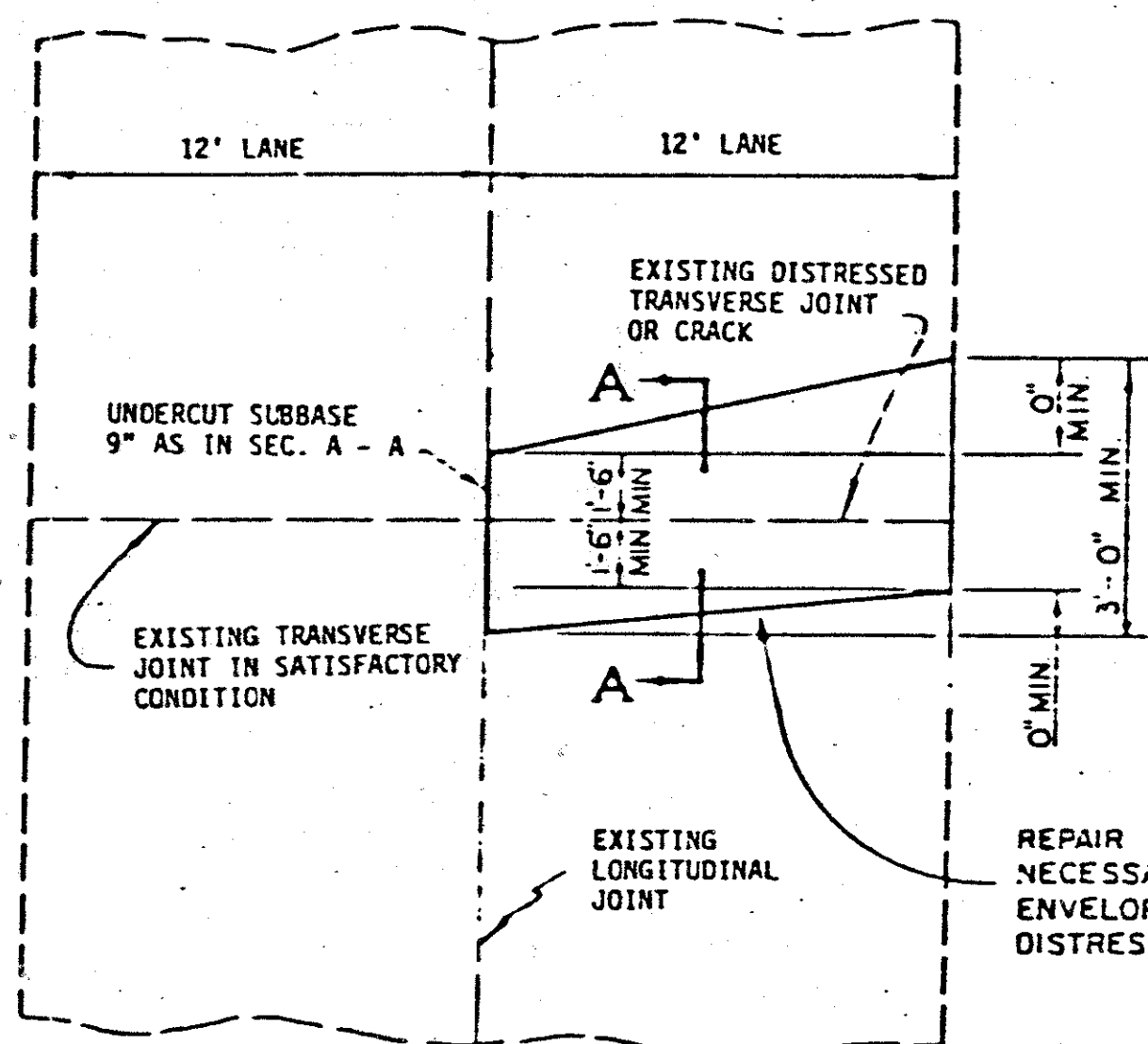


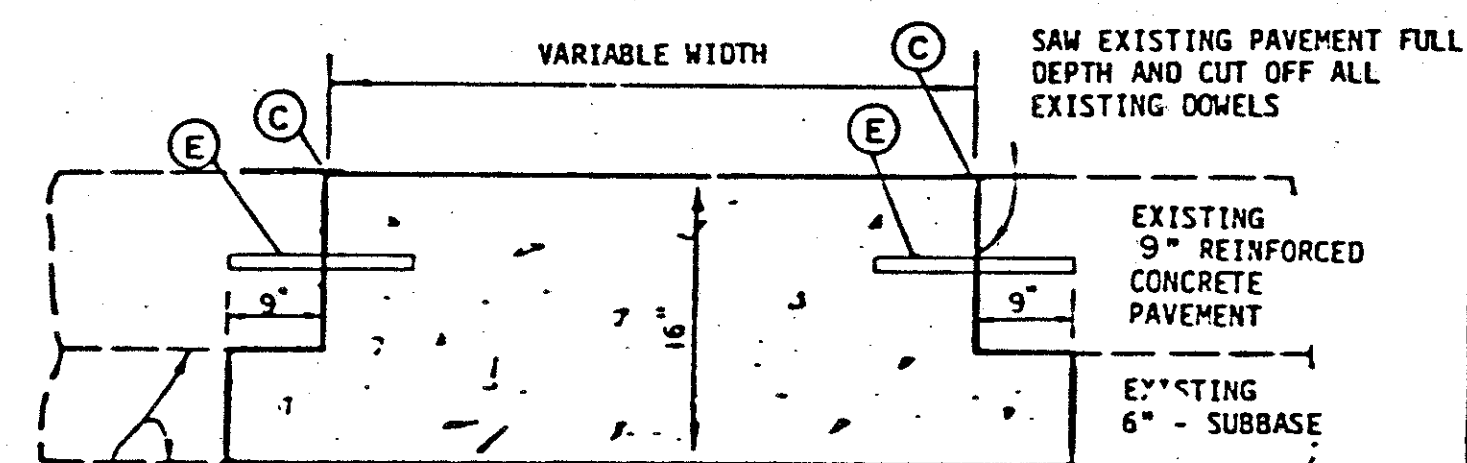
305 PAVEMENT REPLACEMENT DETAILS (PAVEMENT JOINTS OR CRACKS)



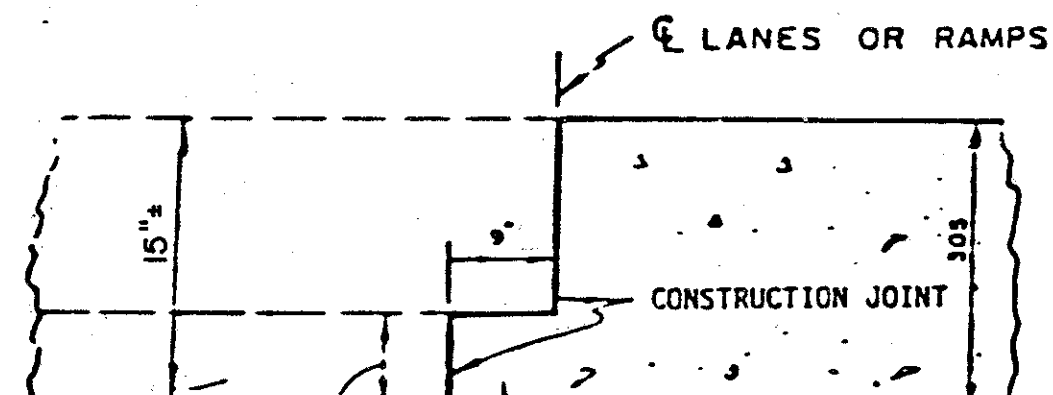
TWO LANE REPLACEMENT



SINGLE LANE REPLACEMENT



SECTION A-A



OPTIONAL LONGITUDINAL CONSTRUCTION JOINT FOR FULL WIDTH REPLACEMENT WHERE ONE LANE OF TRAFFIC MAINTAINED

SEE SHEET No 6 FOR GENERAL NOTES PERTAINING TO PAVEMENT REMOVAL AND REPLACEMENT

NOTE:

THIS WORK IS FOR THE REPAIRING OF DETERIORATED TRANSVERSE PAVEMENT JOINTS AND OTHER SMALL DETERIORATED AREAS. THE LOCATION AND SIZES OF THE REPAIRS SHALL BE AT THE DIRECTION OF THE ENGINEER.

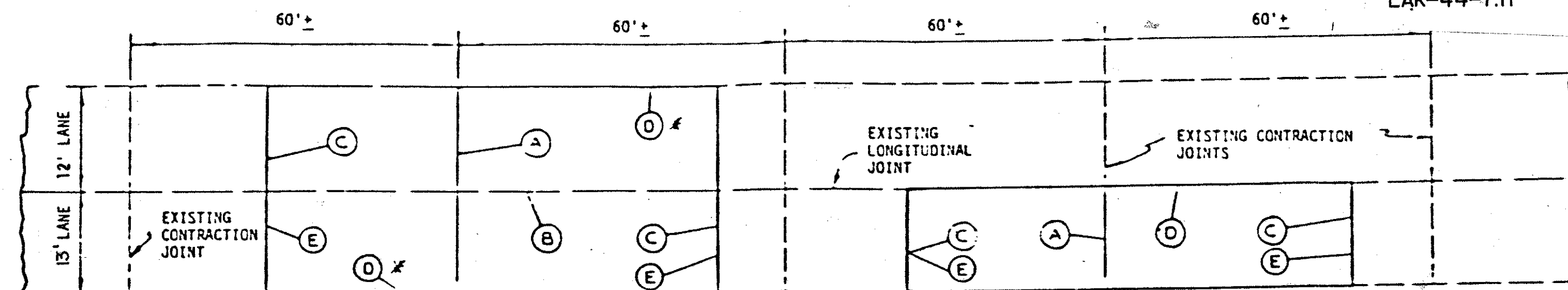
THE COST OF RESHAPING, RECONSTRUCTING AND RECOMPACTING OF THE EXISTING SUBBASE AS NECESSARY SHALL BE INCLUDED IN THE UNIT PRICE BID FOR 305, 15" PORTLAND CEMENT CONCRETE BASE, AS PER PLAN.

THIS DETAIL ALSO APPLIES TO THE REPAIR OF EXISTING 9" REINFORCED CONCRETE. PAYMENT SHALL BE FOR 15" - ITEM 305 FOR EITHER THICKNESS.

| ESTIMATED QUANTITIES | |
|--|---|
| ITEM 305 - 15" PORTLAND CEMENT CONCRETE BASE, AS PER PLAN I 120 II 480 S.Y. | ITEM 305 - 9" PORTLAND CEMENT CONCRETE BASE, AS PER PLAN I 1100 II 4400 S.Y. |
| ITEM 202 - PAVEMENT REMOVED, AS PER PLAN I 1220 II 4880 S.Y. | |
| ITEM SPEC - PAVEMENT SAWING I 1830 II 7320 L.F. | |

305 PAVEMENT REPLACEMENT DETAILS (PAVEMENT PANELS)

LAKE COUNTY
LAK-44-7.11



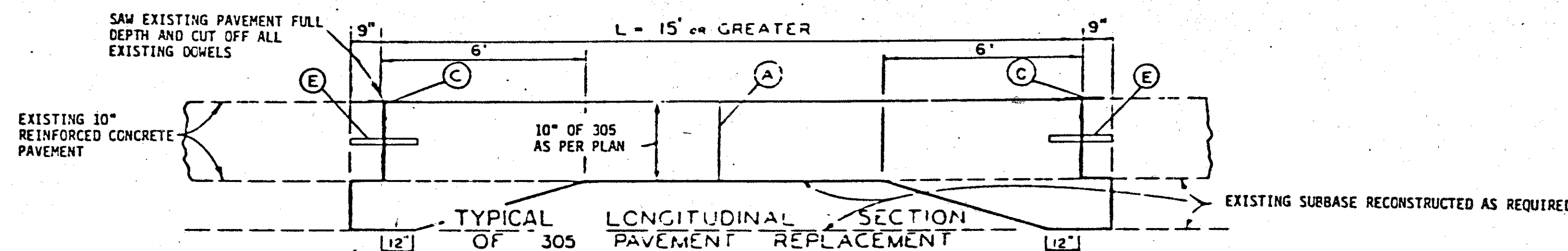
* REQUIRED IF PAVEMENT REPLACEMENT IS ADJACENT TO EXISTING PAVEMENT

TYPICAL TWO LANE REPLACEMENT

TYPICAL ONE LANE REPLACEMENT

- A STANDARD CONTRACTION JOINT AS PER STD CRWG BP-4 - LOCATE, ON STRAIGHT LINE EXTENSION OF EXISTING JOINT FOR SINGLE LANE PAVEMENT
- B LONGITUDINAL JOINT - LONGITUDINAL CONSTRUCTION JOINT AS PER BP-3
- C JOINT AND CRACK SEALING (SEE GENERAL NOTES)
- D EXPANSION BOLT JOINT AS PER BP-3, AT 5'-0" INTERVALS
- E DOWELLED CONSTRUCTION JOINT, SEE DETAIL

SEE SHEET No 8 FOR GENERAL NOTES PERTAINING TO PAVEMENT REMOVAL AND REPLACEMENT



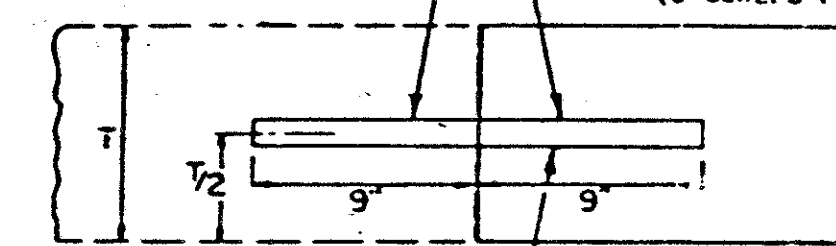
NOTE:

THIS WORK IS FOR THE REPAIRING OF THE LARGER SIZE DETERIORATED PAVEMENT AREAS OF EITHER SINGLE OR TWO LANE WIDTHS. THE LOCATIONS AND SIZES OF THESE REPAIRS SHALL BE AT THE DIRECTION OF THE ENGINEER.

THE COST OF PRESHAPING, RECONSTRUCTING AND RECOMPACTING OF THE EXISTING SUBBASE AS NECESSARY SHALL BE INCLUDED IN THE UNIT PRICE BID FOR 305 9" PORTLAND CEMENT CONCRETE BASE, AS PER PLAN.

THIS DETAIL ALSO APPLIES TO THE REPAIR OF 9" REINFORCED CONCRETE. PAYMENT SHALL BE FOR 9" - ITEM 305 FOR EITHER THICKNESS.

DOWEL HOLE AS PER ITEM 510. GROUT USING SS 956 EPOXY MORTAR OR AN APPROVED EQUAL



DOWELLED CONSTRUCTION JOINT