

# TYPICAL SECTIONS

TYPE 848

FHWA REGION	STATE	PROJECT
5	OHIO	

3  
35

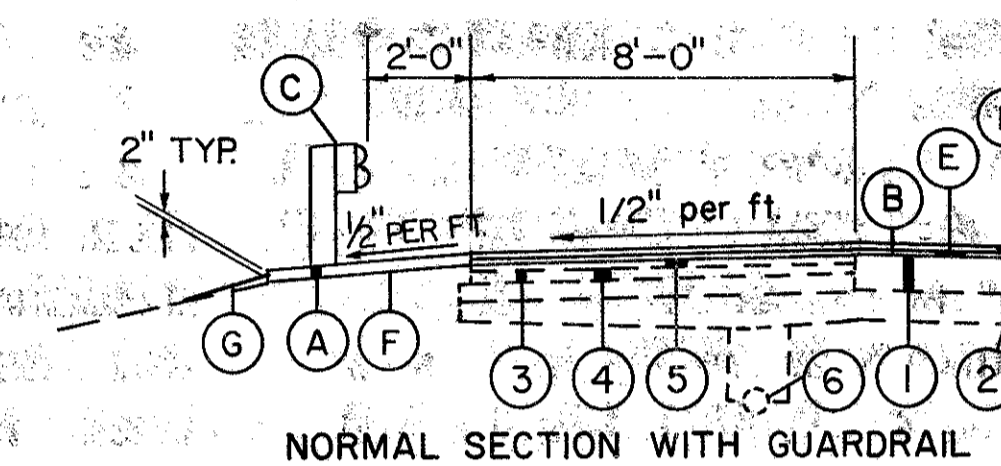
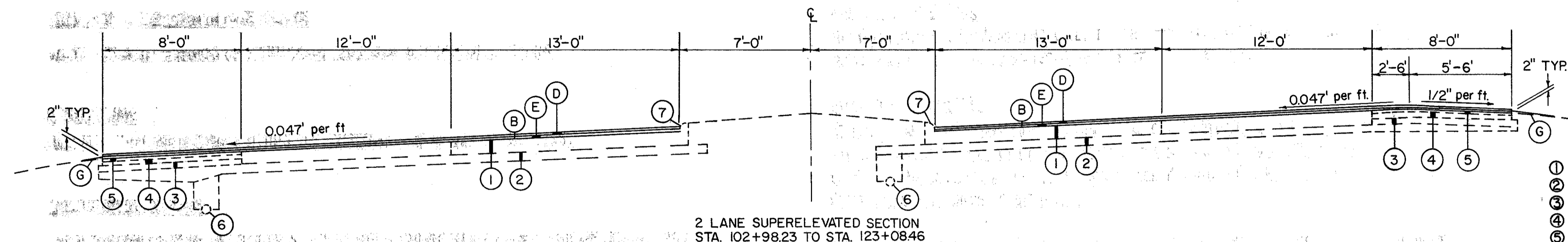
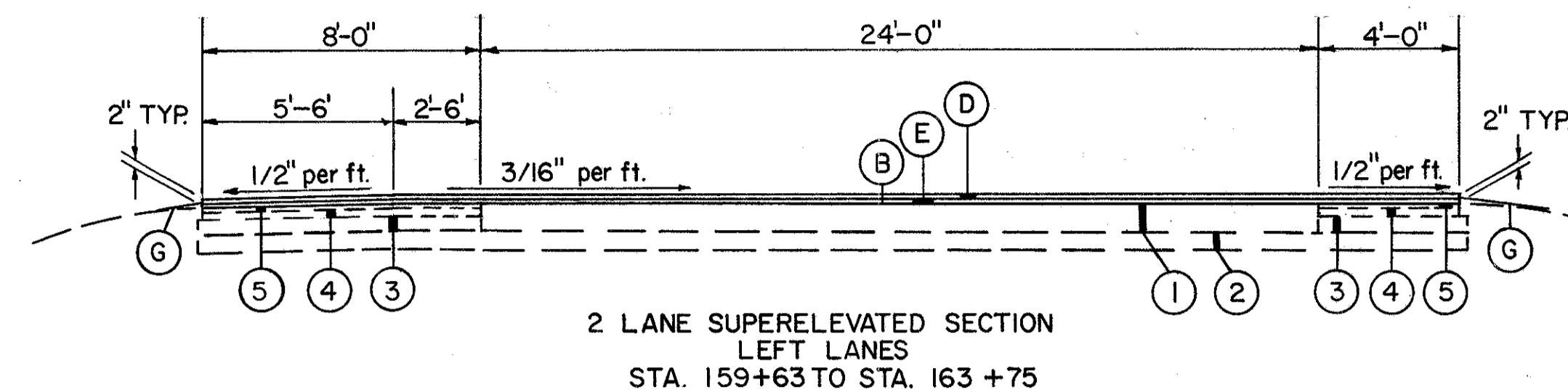
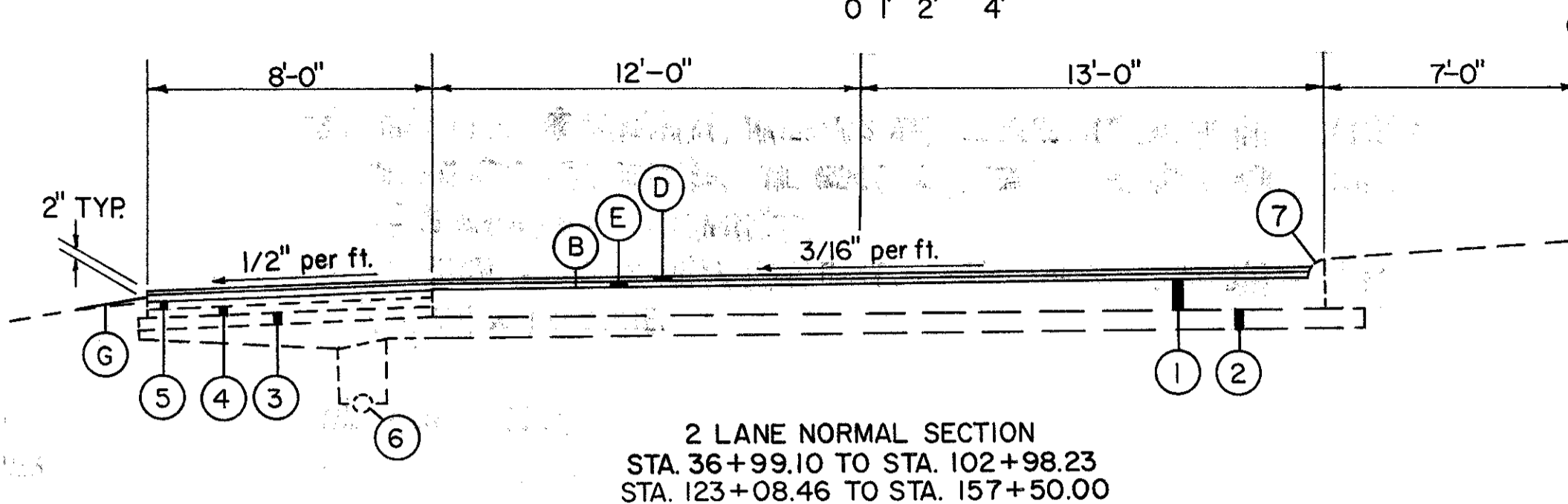
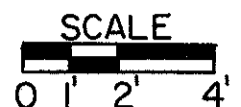
LAKE COUNTY  
LAK-44-7.11

## NOTES

TYPICAL SECTIONS ARE INTENDED TO SHOW THE GENERAL ROADWAY AND PAVEMENT FEATURES ONLY. FOR DETAILS, SEE THE PLAN SHEETS, DETAIL SHEETS AND CROSS SECTION SHEETS.

**SPREADING EQUIPMENT:** AN AUTOMATIC SCREED CONTROL HAVING A 40 FOOT SKI ARM SHALL BE USED FOR PLACING THE INTERMEDIATE COURSE (SEE PROPOSAL NOTE). FOR FULL WIDTH PAVING, THE WIDTH LAID SHALL NOT EXCEED THE PAVER'S RATED WIDTH AS RECOMMENDED BY THE PAVER MANUFACTURER.

**LONGITUDINAL JOINTS:** LONGITUDINAL JOINTS BETWEEN A PAVEMENT LANE AND ADJOINING BERM OR SPEED CHANGE LANE AND BETWEEN A SPEED CHANGE LANE AND THE ADJOINING BERM SHALL BE MADE THE SAME DAY. ALL LONGITUDINAL JOINTS SHALL BE HOT WITH THE EXCEPTION OF ONE COLD JOINT PER ROADWAY. LONGITUDINAL JOINT LOCATIONS SHALL BE AS APPROVED BY THE ENGINEER. EACH RAMP SHALL HAVE ONLY ONE LONGITUDINAL COLD JOINT LOCATED APPROXIMATELY HALFWAY ACROSS THE RAMP.



- ### LEGEND
- EXISTING**
- ① 9" REINFORCED PORTLAND CEMENT CONCRETE
  - ② SUBBASE
  - ③ BITUMINOUS SURFACE TREATMENT
  - ④ WATERPROOFED AGGREGATE BASE COURSE
  - ⑤ BITUMINOUS SURFACE
  - ⑥ UNDERDRAIN
  - ⑦ CONCRETE CURB
- PROPOSED**
- Ⓐ ITEM 301 3" BITUMINOUS AGGREGATE BASE, AS PER PLAN, AC-20, RT-II OR RT-12
  - Ⓑ ITEM 407 TACK COAT AND COVER AGGREGATE (SEE GENERAL NOTES)
  - Ⓒ ITEM 606 GUARD RAIL, TYPE 5
  - Ⓓ ITEM 848 1 1/4" ASPHALT CONCRETE SURFACE COURSE, TYPE 1, AS PER PLAN, AC-20
  - Ⓔ ITEM 848 \* 1 3/4" ASPHALT CONCRETE INTERMEDIATE COURSE, TYPE 2 (1 3/4" AVG.), AC-20
  - Ⓕ ITEM SPEC. HERBICIDE FOR WEED CONTROL
  - Ⓖ ITEM 203 LINEAR GRADING (TO BE USED ON ALL SHOULDERS)
- \* See Proposal Note

