

MICROFILMED  
OCT 26 1991

NOTE: ALL SIGNING TO BE  
DONE BY STATE FORCES  
OR COUNTY FORCES.

COMPUTED BY: J.L.B. 11/78  
CHECKED BY: M.F. 11/78

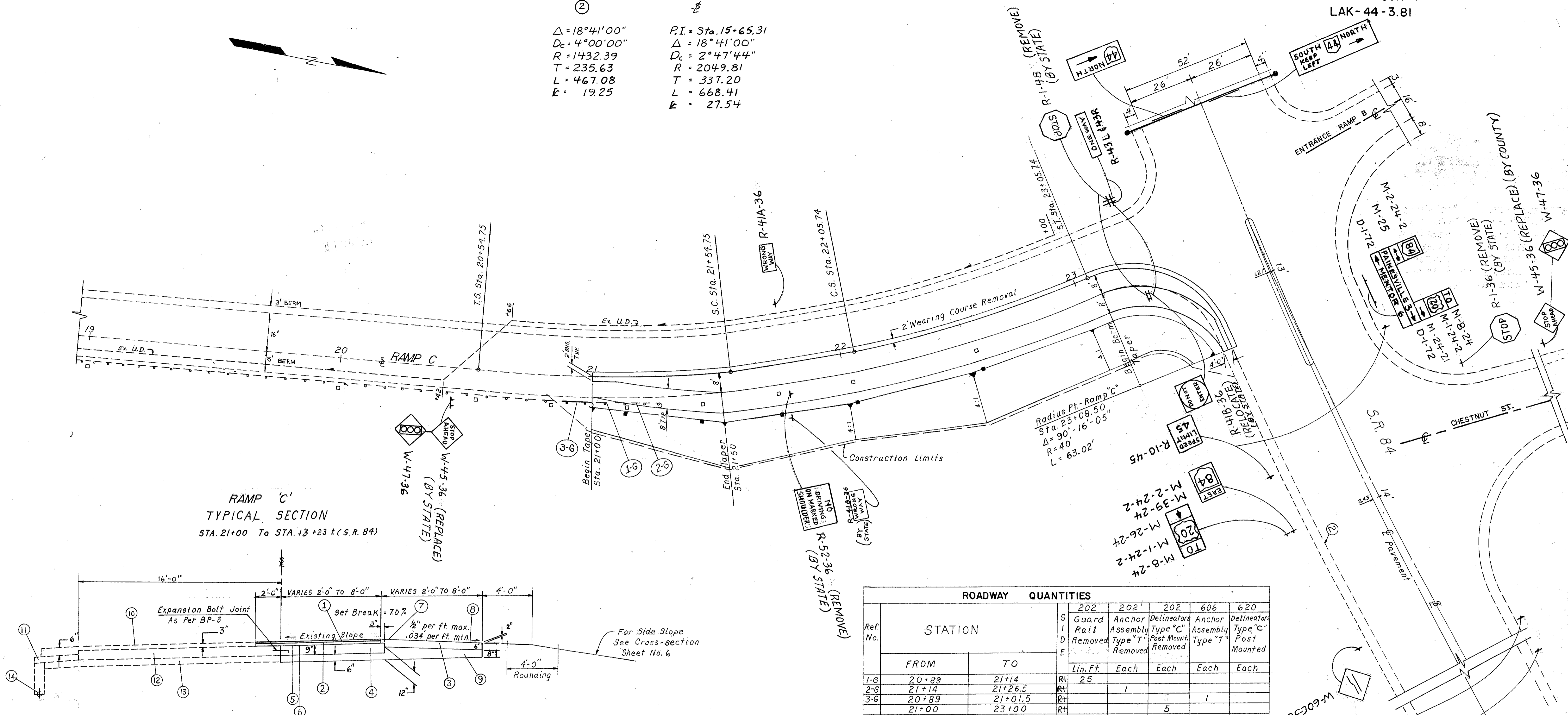
FHWA REGION	STATE	PROJECT
5	OHIO	

3  
6

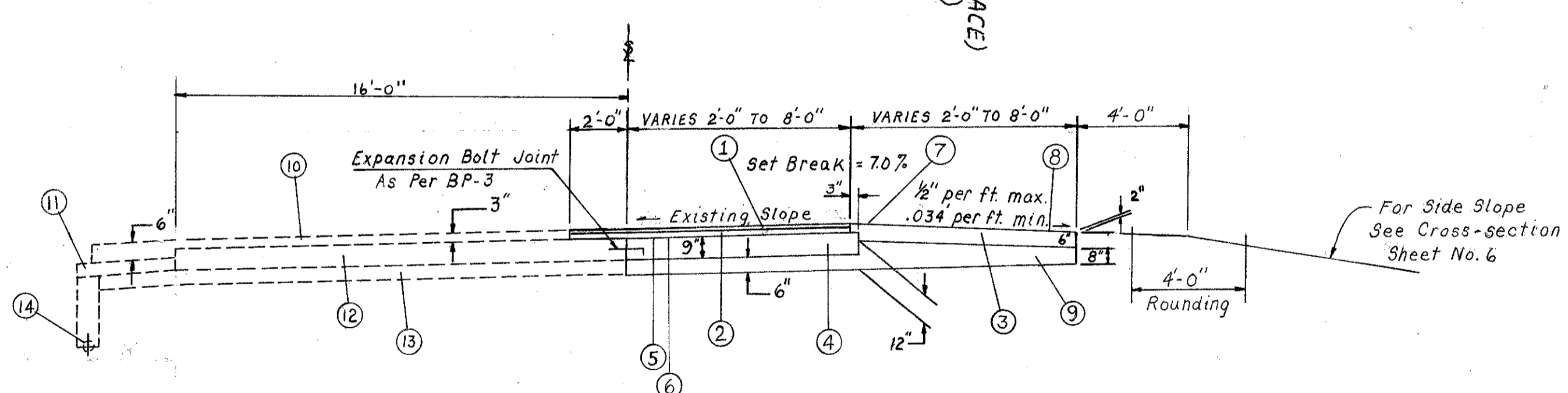
LAKE COUNTY  
LAK-44-3.81

**CURVE DATA**

②  
 $\Delta = 18^\circ 41' 00''$   
 $D_c = 4^\circ 00' 00''$   
 $T = 235.63$   
 $L = 467.08$   
 $E = 19.25$   
 $P.I. = Sta. 15+65.31$   
 $\Delta = 18^\circ 41' 00''$   
 $D_c = 2^\circ 47' 44''$   
 $R = 2049.81$   
 $T = 337.20$   
 $L = 668.41$   
 $E = 27.54$



**RAMP 'C'**  
**TYPICAL SECTION**  
STA. 21+00 To STA. 13+23 ± (S.R. 84)



**INDEX**

- ① Item 404 - Asphalt Concrete AC-20 (1 1/4")
- ② Item 402 - Asphalt Concrete AC-20 (1 1/2")
- ③ Item 301 - Bituminous Aggregate Base, AC-20
- ④ Item 801 - Portland Cement Concrete Base
- ⑤ Item 407 - Tack Coat, SS-1, SS-1H, MS-2 or RS-1; or RC-250
- ⑥ Item 407 - Cover Aggregate
- ⑦ Item 409 - Seal Coat Bituminous Material, MC-800 or MC-3000; CBAE-800; RS-1, RS-2, CR5-1 or CR5-2; or RT-9 or RT-10. (0.3 gal/sy)
- ⑧ Item 409 - Seal Coat Cover Aggregate, No. 8. (0.05 CY/SY)
- ⑨ Item 310 - Subbase, Type II
- ⑩ Existing Asphalt Concrete
- ⑪ Existing 6" Asphalt Concrete Base Course
- ⑫ Existing 9" Reinforced Portland Cement Concrete Pavement
- ⑬ Existing 6" Subbase
- ⑭ Existing Underdrain

ROADWAY QUANTITIES		202	202'	202	606	620
Ref. No.	STATION	Guard Rail Removed	Anchor Assembly Type "C" Post Mounted	Delineators Type "C" Post Mounted	Anchor Assembly Type "C" Post Mounted	Delineators Type "C" Post Mounted
	FROM TO	Lin. Ft.	Each	Each	Each	Each
1-6	20+89 21+14	Rt 25				
2-6	21+14 21+26.5	Rt	1			
3-6	20+89 21+01.5	Rt		5		
	21+00 23+00	Rt				5
<b>TOTALS</b>			<b>25</b>	<b>1</b>	<b>5</b>	<b>5</b>

□ Existing Delineators Type "C" Post Mounted  
 ■ Proposed Delineators Type "C" Post Mounted