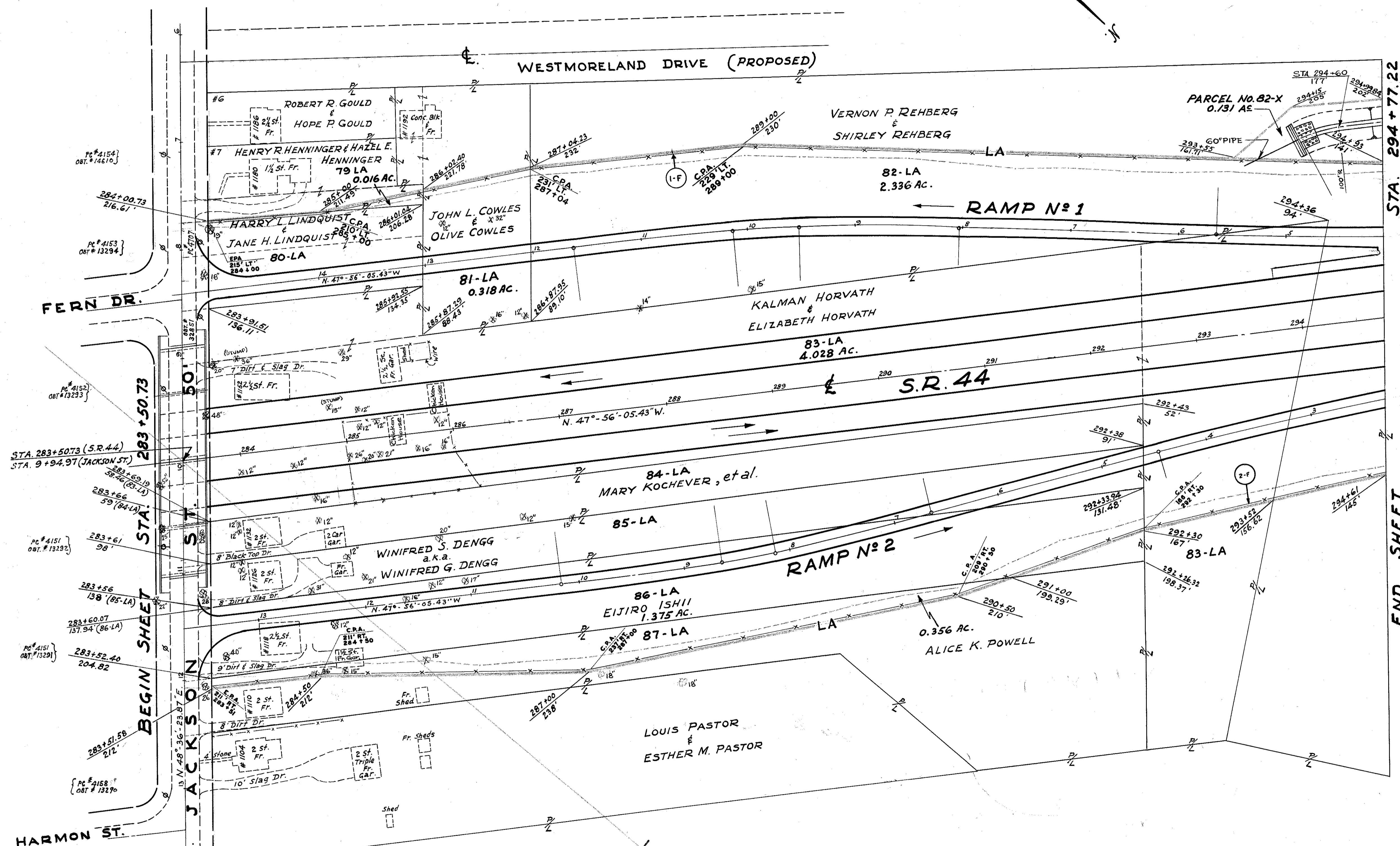


LAKE COUNTY
LAK - 44 - 3.79

WESTMORELAND SUBD. (Proposed)
O.L. - 58 TRACT 4
S.L. 1 TO 7

WESTMORELAND DRIVE (PROPOSED)



STA. 294+77.22

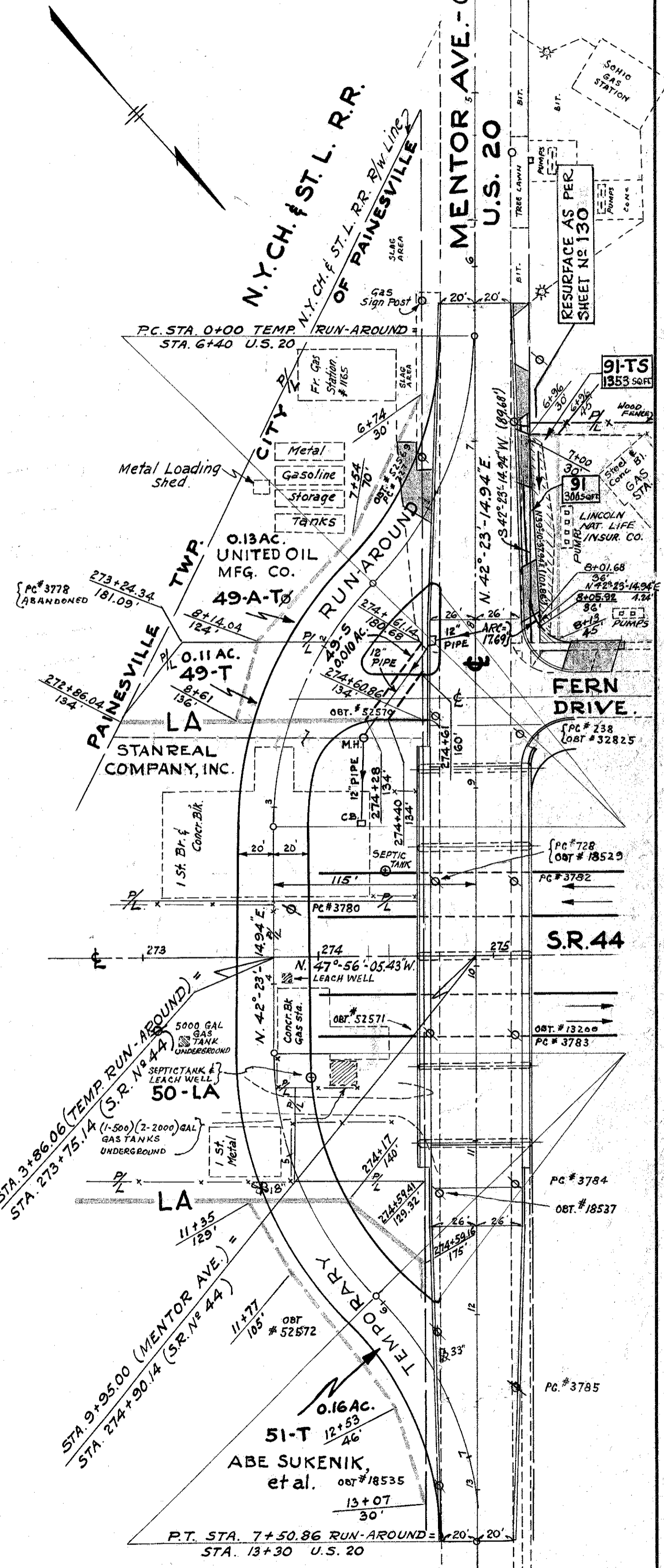
END SHEET

FENCE

REF. NO.	STATION		SIDE	SS-18 FENCE TYPE "C" LIN. FT.
	FROM	TO		
1-F	283+50.73	294+77.22	LT.	1092
2-F	283+50.73	294+77.22	RT.	1111
TOTAL (U-388 (12) MUNICIPAL)				2203

COMPLETED 2-20-62

DATE	REVISIONS



SEE SHEET N° 4