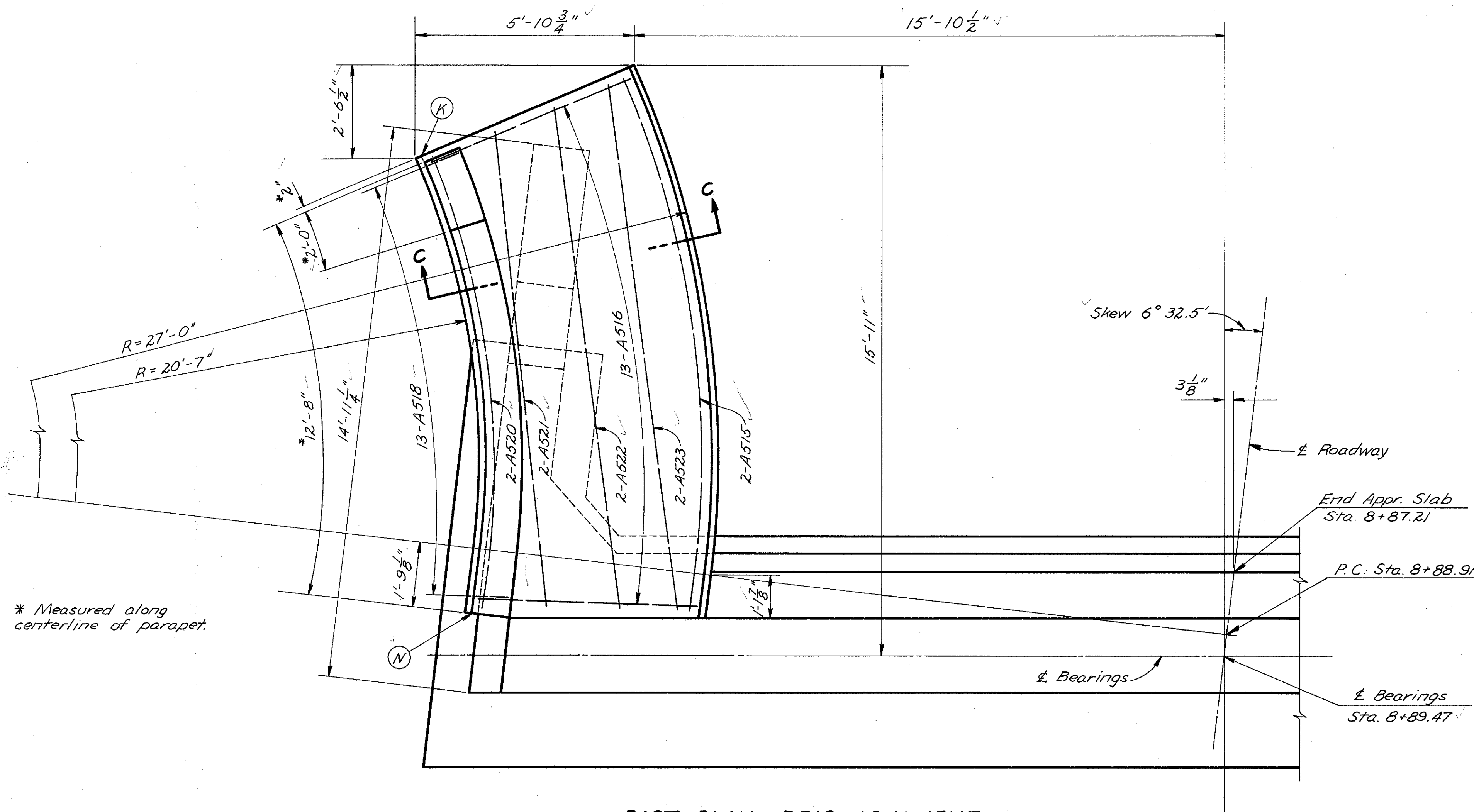


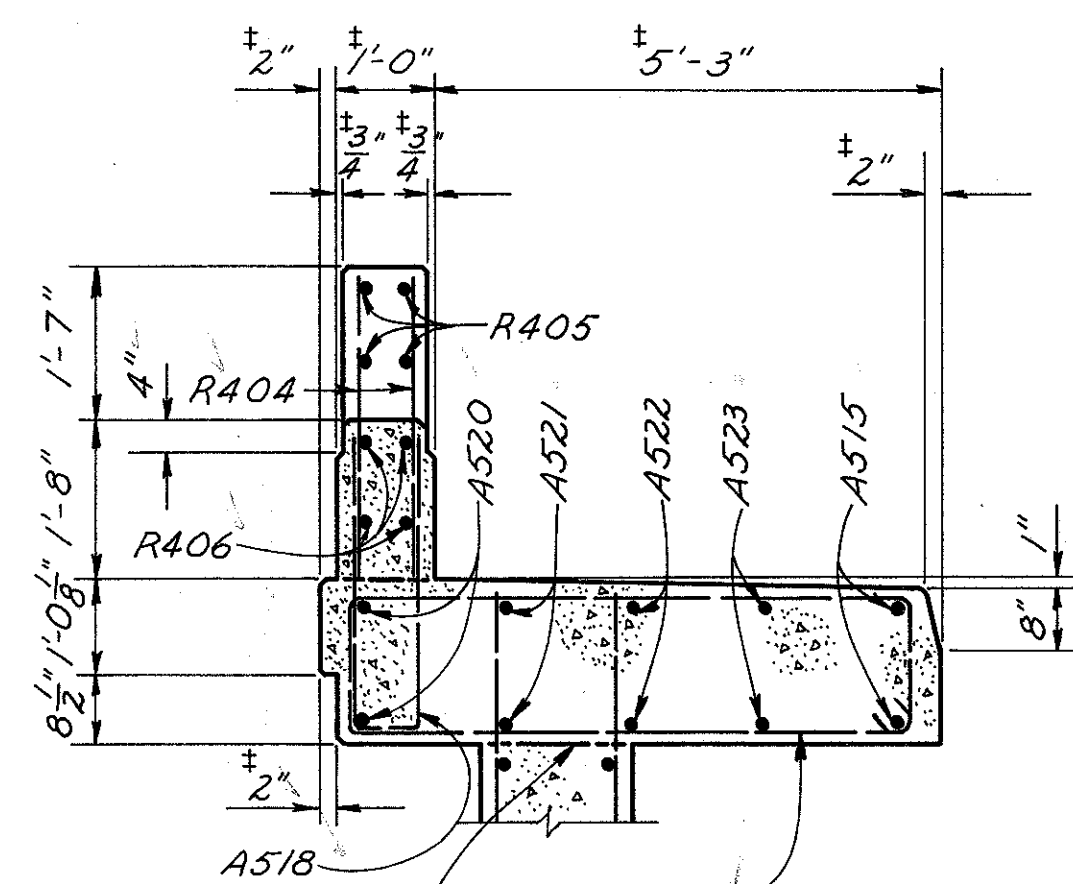
MICROFILMED
DEC 16 1987



* Measured along centerline of parapet.

PART PLAN, REAR ABUTMENT

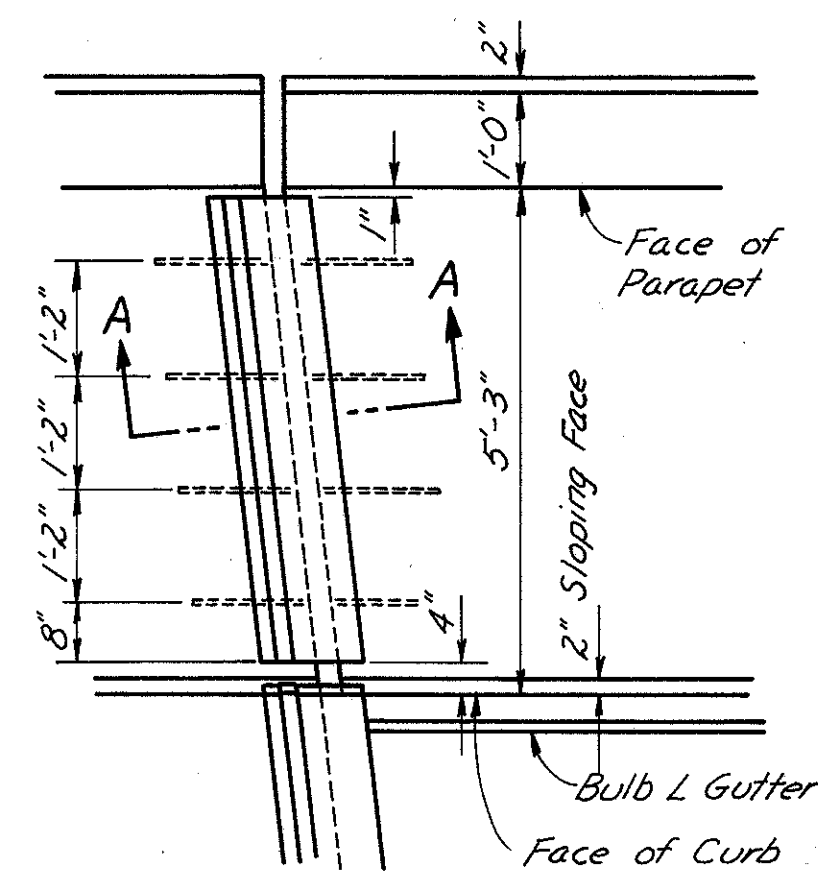
For additional details, see sheet no. 181



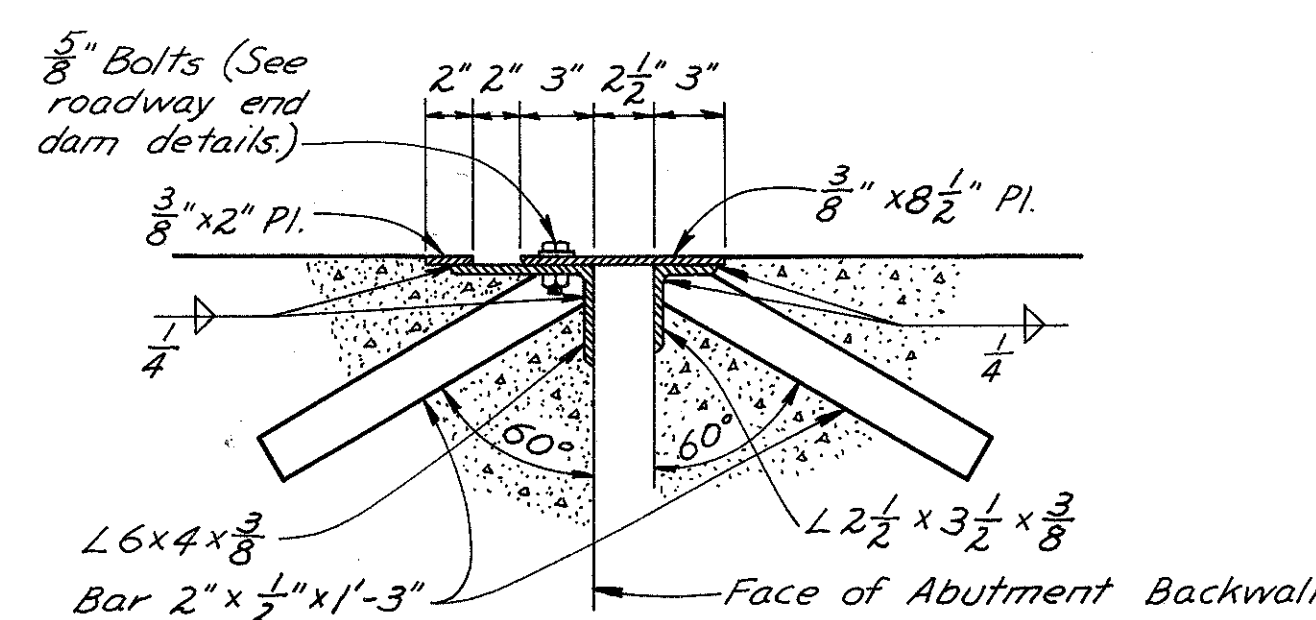
† Measured radially

SECTION C-C

For details of wingwall below this construction joint, see sheet no. 181



PLAN OF SIDEWALK END DAM

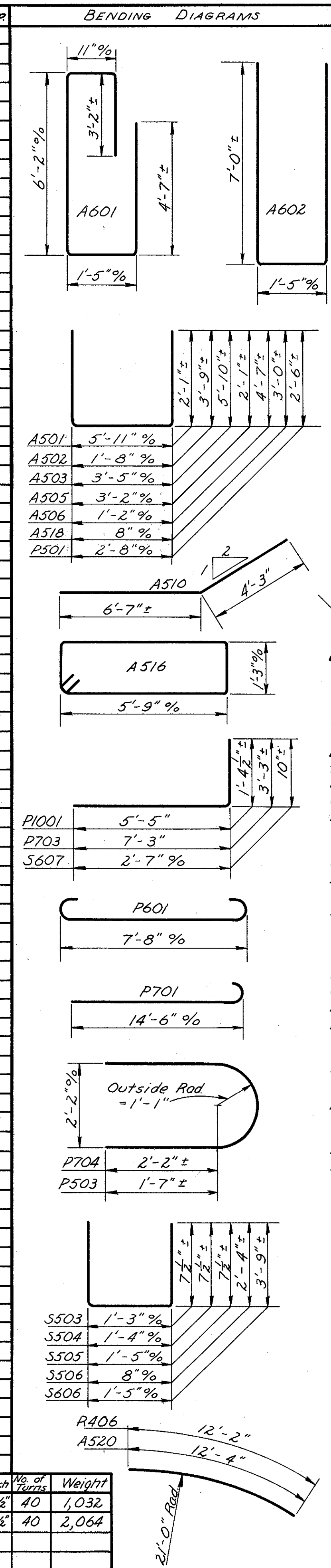


SECTION A-A

Omit shop coat on all portions of end dam. Portions in contact with steel or with concrete shall not be painted. All other portions shall be cleaned and given the shop coat in the field as well as the three field coats.

REINFORCING STEEL LIST

MARK	No.	LENGTH	WEIGHT	SHR		
Superstructure						
S601	378	40'-5"	22,947	S		
S602	504	32'-0"	24,224	S		
S603	81	25'-0"	3,042	S		
S605	8	10'-2"	122	B		
S606	12	8'-7"	155	B		
S607	4	3'-3"	20	B		
S501	378	40'-5"	15,934	S		
S502	286	5'-11"	1,765	S		
S503	286	2'-3"	671	B		
S504	286	2'-4"	696	B		
S505	286	2'-5"	721	B		
S506	286	5'-1"	1,516	B		
Abutments						
A801	32	22'-4"	1,908	S		
A802	24	10'-11"	700	S		
A601	58	15'-7"	1,358	B		
A602	16	15'-1"	362	B		
A501	128	9'-10"	1,313	B		
A502	48	8'-11"	446	B		
A503	54	14'-10"	835	B		
A504	60	20'-11"	1,309	S		
A505	40	7'-1"	296	B		
A506	28	10'-1"	294	B		
A507	56	8'-10"	516	S		
A508	24	8'-6"	213	S		
A509	16	7'-1"	118	S		
A510	8	10'-10"	90	B		
A511	64	3'-8"	244	S		
A512	48	12'-6"	626	S		
A513	8	4'-5"	37	S		
A514	8	4'-0"	33	S		
A515	2	14'-8"	31	B		
A516	52	14'-6"	786	B		
A517	6	11'-11"	75	S		
A518	52	6'-5"	348	B		
A519	28	6'-2"	180	S		
A520	2	12'-4"	26	B		
A521	2	13'-0"	27	S		
A522	2	13'-9"	29	S		
A523	2	14'-4"	30	S		
Piers						
P1001	96	6'-6"	2,685	B		
P1002	96	17'-0"	7,022	S		
P901	15	28'-9"	1,466	S		
P701	36	15'-4"	1,128	B		
P702	18	14'-3"	524	S		
P703	30	10'-4"	634	B		
P704	12	7'-8"	188	B		
P601	240	9'-0"	3,244	B		
P501	144	7'-5"	1,114	B		
P502	12	18'-11"	237	S		
P503	6	6'-6"	41	B		
Railing						
RA01	16	13'-4"	*	S		
RA02	88	16'-6"	*	S		
RA03	12	12'-4"	*	S		
RA04	24	3'-1"	*	S		
RA05	16	1'-8"	*	S		
RA06	4	12'-2"	*	B		
Spiral Reinforcing Bars						
SP401	4	32"	13'-8"	4 1/2	40	1,032
SP402	8	32"	13'-11"	4 1/2	40	2,064

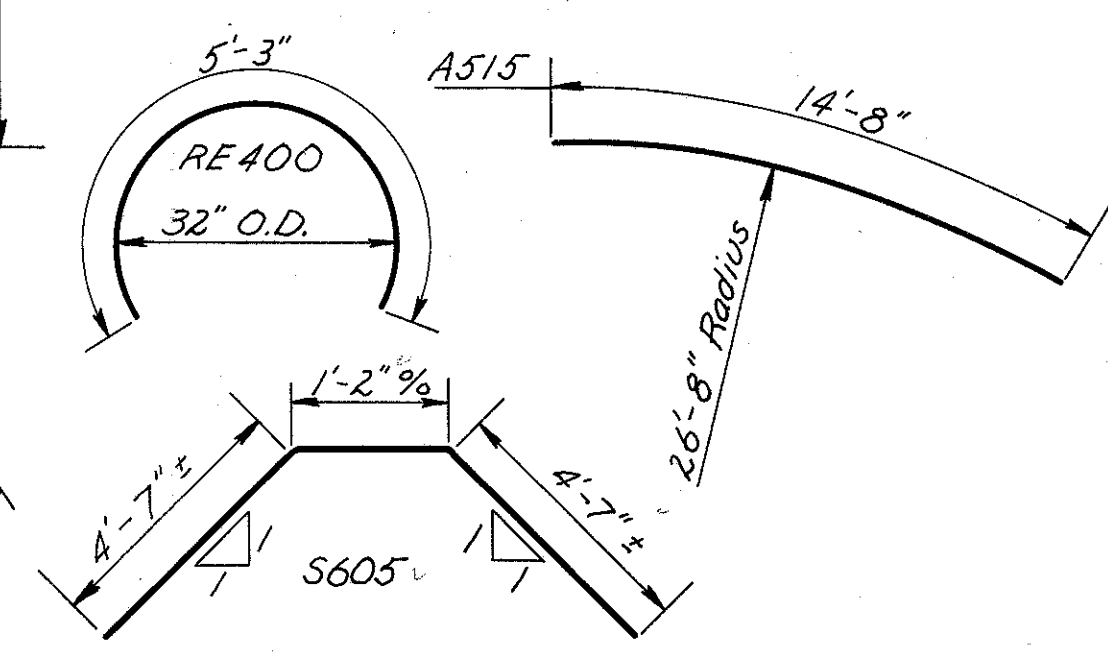


FED. RD. DIVISION	STATE	PROJECT
2	OHIO	

LAK - 44 - 3.79

182
204

MARK	No.	LENGTH	WEIGHT	SHR
Replacement Bars				
RE1001	1	7'-2"	-	S
RE901	1	6'-10"	-	S
RE801	1	6'-6"	-	S
RE701	1	6'-2"	-	S
RE601	3	5'-11"	-	S
RE501	2	5'-7"	-	S
RE400	1	5'-3"	-	B
RE401	1	5'-3"	-	S



BAR SIZE is indicated in the bar mark. The first digit where three digits are used, and the first two digits where four are used, indicate the bar size number. For example, A601 is a No. 6 size bar and P1001 is a No. 10 size.

REPLACEMENT BARS: If reinforcing bars are from stock which has previously been tested and approved by the Ohio Highway Testing Laboratory, test samples as provided in Sec. S-A.02 need not be furnished and replacement bars will not be required.

SPIRAL REINFORCING BARS: The "Length" shown in the steel list for the spiral bars is the distance from the top of the footing to the bottom of the pier cap. The "No. of Turns" shown is the "Length" divided by the pitch, plus 3 turns (total number of closed coils), expressed as the nearest whole number. Spiral reinforcing bars shall not have deformations but shall in other respects conform to Item S-A. 1/2 closed coils shall be provided at the ends of each spiral unit.

Four steel channel, tee or angle spacers, weighing approximately 0.68 lb. per lin. ft. of spacer, shall be provided for each spiral unit. They shall be equally spaced along the periphery of the coil. The number of pounds of these spacers, based on 0.68 lb. per lin. ft., will be paid for as reinforcing steel and is included in the tabulated quantity of spiral bars.

* Included with Railing for payment.

STATE OF OHIO
DEPARTMENT OF HIGHWAYS
DIVISION OF DESIGN AND CONSTRUCTION
BUREAU OF BRIDGES

REAR ABUTMENT DETAILS, SIDEWALK END DAM DETAILS & REINFORCING STEEL LIST
BRIDGE No. LAK - 44 - 0505
under JACKSON ST.
LAKE COUNTY S.R. 44 RELOC.
Sta. 283 + 50.73

DESIGNED	DRAWN	TRACED	CHECKED	REVIEWED	DATE	REVISED
J.F.C.	J.F.C.	A.A.K.	J.V.G.	B.F.G.	7-24-61	