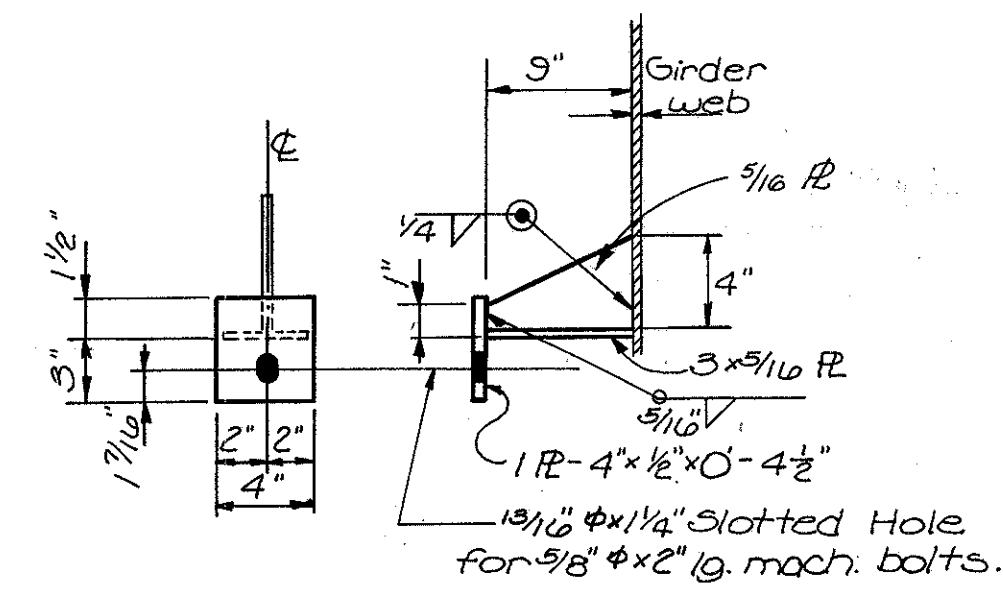


ELEVATION OF SIGN

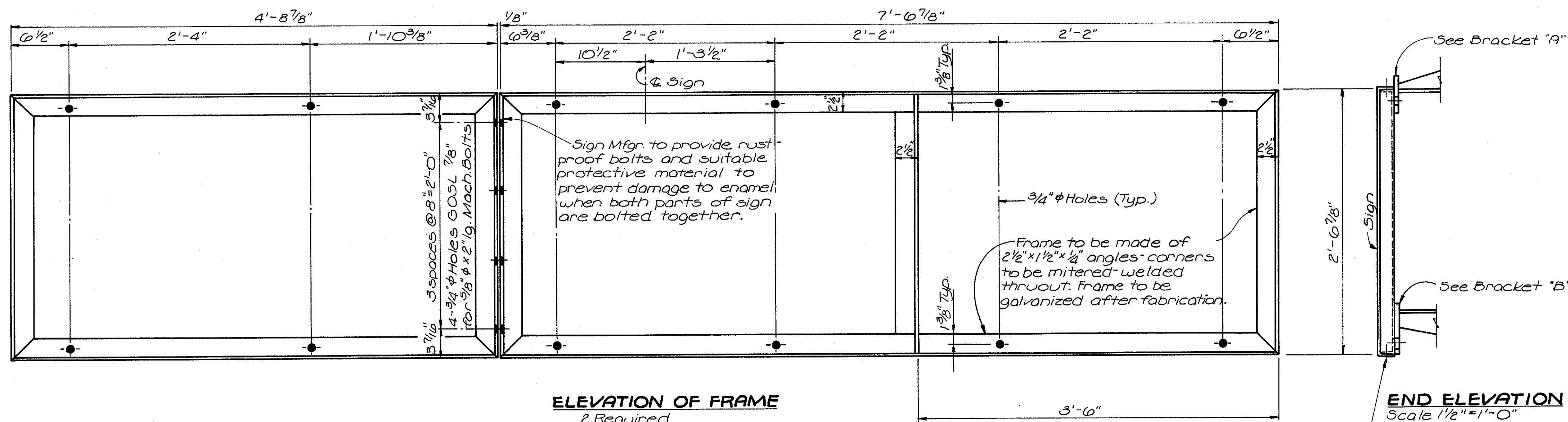
2 Required - Complete
Scale 1/2" = 1'-0"

SECTION A-A



BRACKET "A"

12 Required
Scale 1/2" = 1'-0"



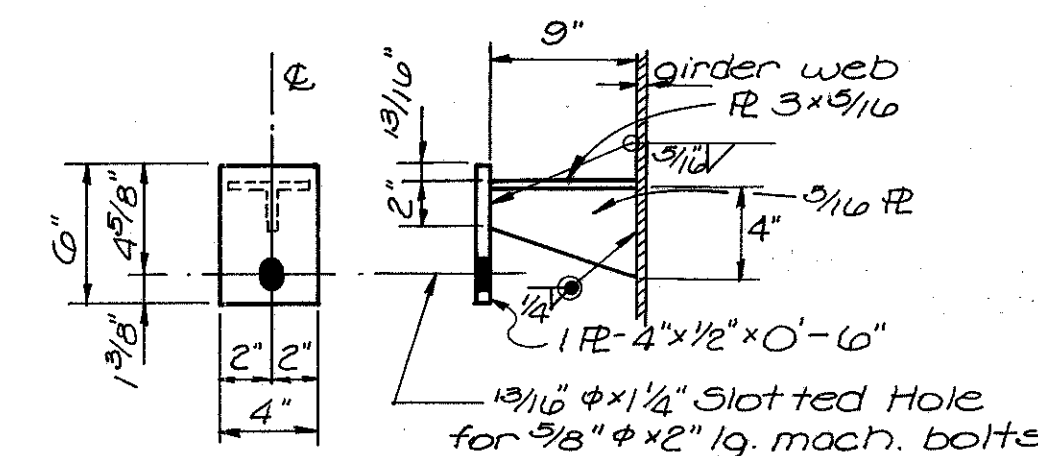
ELEVATION OF FRAME

2 Required
Scale 1/2" = 1'-0"

END ELEVATION

Scale 1/2" = 1'-0"

Sign to be securely fastened to frame at about 2'-0" ctr's. all around in order to avoid damage to porcelain. The method used shall be determined by the sign manufacturer.



BRACKET "B"

12 Required
Scale 1/2" = 1'-0"

RAILROAD IDENTIFICATION SIGN shall be mounted on the web of each outside girder centered approximately over the middle of the oncoming highway traffic lanes. The signs including frames, brackets and bolts shall be included with Item S-107 for payment. Contractor shall contact N.Y.C. & ST. L. R.R. for stencil.

RAILROAD INSIGNIA

STATE OF OHIO DEPARTMENT OF HIGHWAYS DIVISION OF DESIGN AND CONSTRUCTION BUREAU OF BRIDGES						
R.R. IDENTIFICATION SIGN						
BRIDGE NO. LAK-44-0483 UNDER N.Y.C. & ST. L. R.R.						
LAKE COUNTY				STA. 271+64.18		
DESIGNED	DRAWN	TRACED	CHECKED	REVIEWED	DATE	REVISED
			MKH			