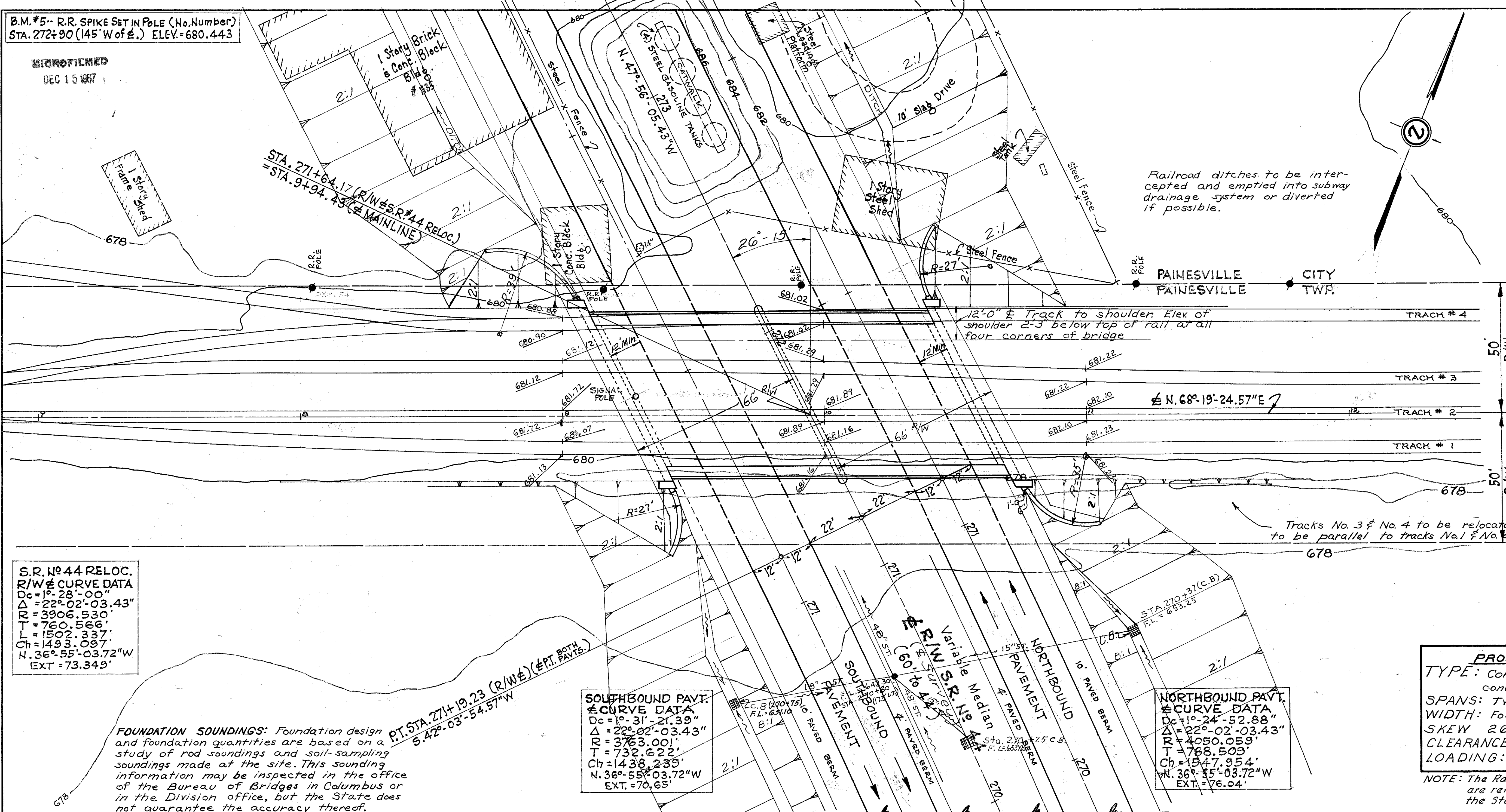
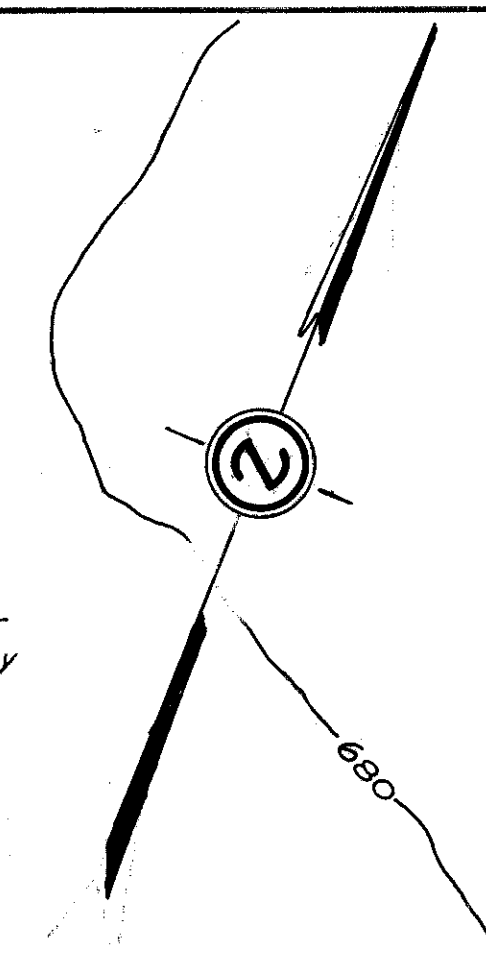


B.M. #5-- R.R. SPIKE SET IN POLE (No. Number)  
 STA. 272+90 (145' W of E.) ELEV. = 680.443

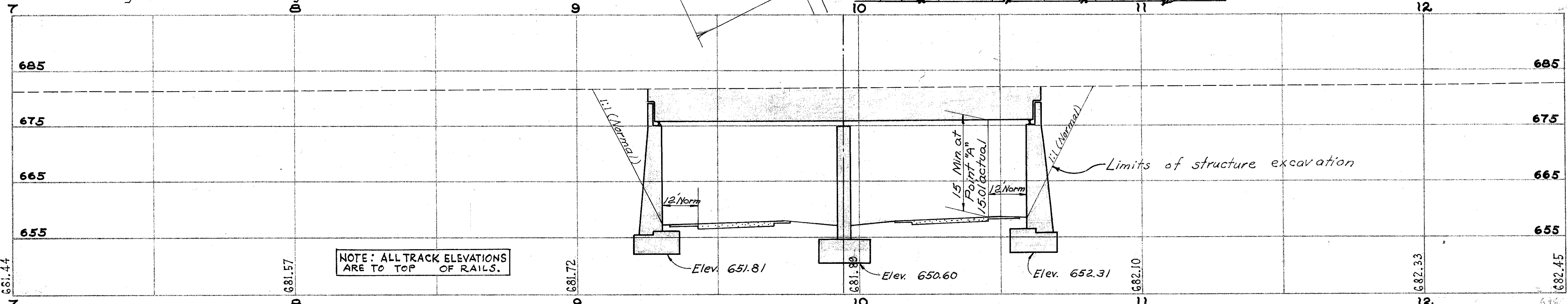
MICROFILMED  
 DEC 15 1987

FED. RD. DIVISION	STATE	PROJECT	154 204
2	OHIO		

LAKE COUNTY  
 SEC. LAK-44-3.79  
 AT PAINESVILLE



**PROPOSED STRUCTURE**  
 TYPE: Continuous steel girders with reinf. conc. deck and reinf. conc. substructure  
 SPANS: Two @ 56.5' clear (Normal to E highway)  
 WIDTH: Four tracks: 56'-6" deck, 63'-8" sidewalks.  
 SKEW: 26°-15'  
 CLEARANCE: 15'-0" Min.  
 LOADING: Coopers E-72 AREA (diesels)  
 NOTE: The Railroads' elevations (shts. 151, 152, & 153) are referenced to a datum 3.37 ft lower than the States' elevations for this same area.



STATE OF OHIO  
 DEPARTMENT OF HIGHWAYS  
 BUREAU OF BRIDGES

**SITE PLAN**  
 Bridge No. LAK-44-0483

N.Y. Ch. & St. L. R.R. - S.R. #44 UNDERPASS  
 Scale 1" = 20' Lake County

TOPOGRAPHY	DESIGN	DR. BY	CH'KD	REVISED	DATE
J.H.B.	J.H.B.	B.D.H.	P.S.I.		