

BEAM SPLICE DETAIL

NOTES

FABRICATION ALL-PORTIONS OF THE SIGN SUPPORT, INCLUDING SIGN ATTACHMENTS, SHALL BE HOT DIP GALVANIZED IN ACCORDANCE WITH THE REQUIREMENTS OF A.S.T.M. DESIGNATIONS A-123 AND A-153. THE CONDUIT SHALL BE GALVANIZED IN ACCORDANCE WITH SECS-25.08 AND SHALL BE INCLUDED IN THE UNIT PRICE BID FOR OVERHEAD SIGN SUPPORTS FOR PAYMENT.

* FOUNDATION - THE TOP ELEVATION OF FOUNDATIONS SHALL BE VARIED SO AS TO MAINTAIN A MINIMUM CLEARANCE OF 17' BETWEEN THE BOTTOM OF THE SIGN AND THE HIGHWAY CROWN.

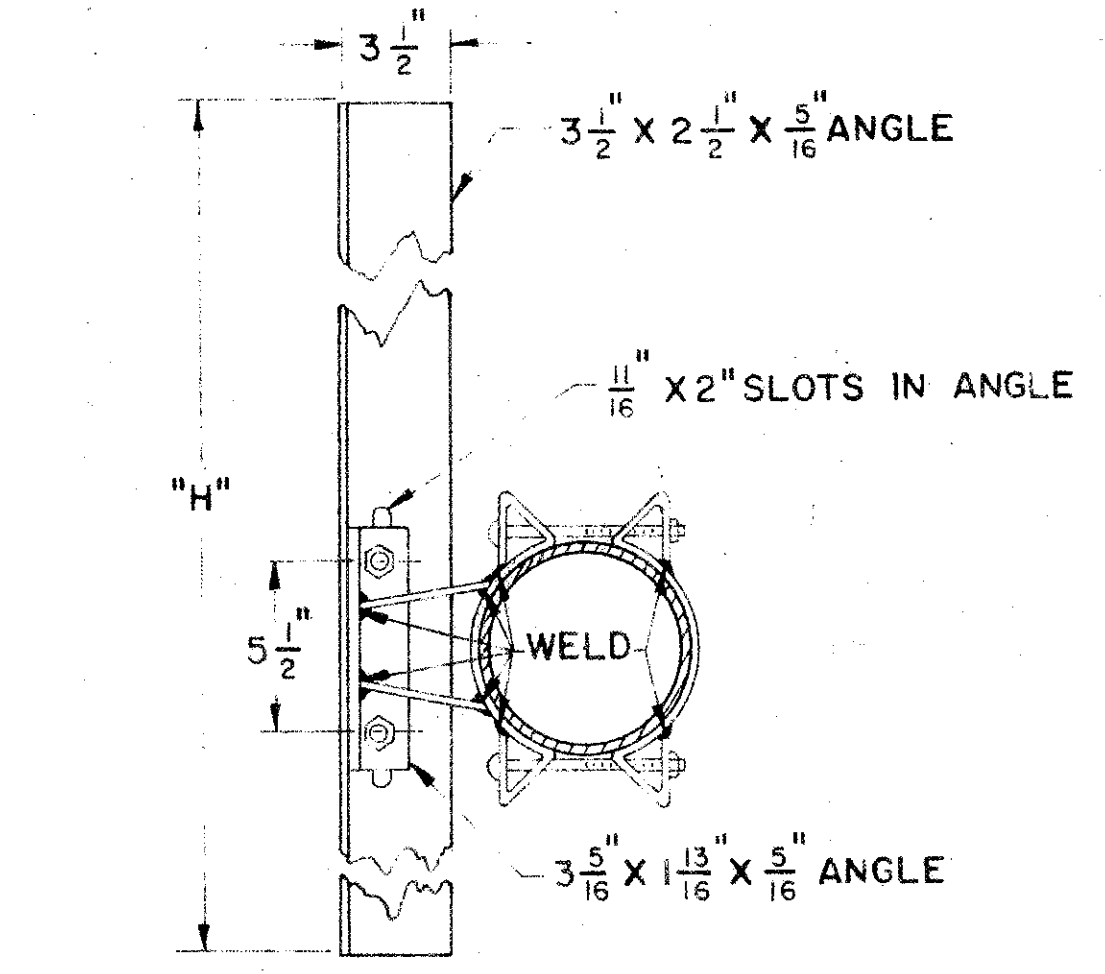
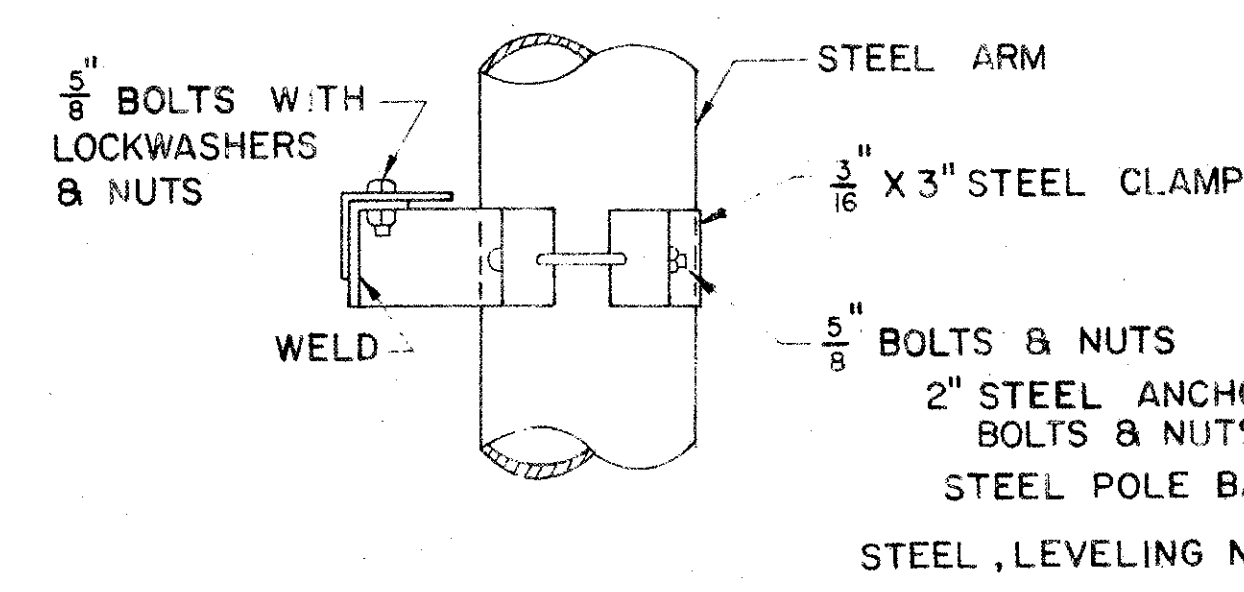
** ERECTION - FOR SPANS LESS THAN MAX. LENGTH, THE LARGER DIA. OF BEAM HALVES IS HELD AND THE BEAM IS SHORTENED ON THE SMALLER DIA. END.

MATERIAL - STEEL POLE BASES AND FLANGES SHALL CONFORM TO THE REQUIREMENTS OF ASTM SPECIFICATION A30 GRADE B. HIGH STRENGTH STEEL BOLTS SHALL CONFORM TO ASTM SPECIFICATION A193 GRADE B7. AFTER FABRICATION, TAPERED POLES AND BEAM HALVES SHALL HAVE A MINIMUM YIELD STRENGTH OF 48,000 PSI.

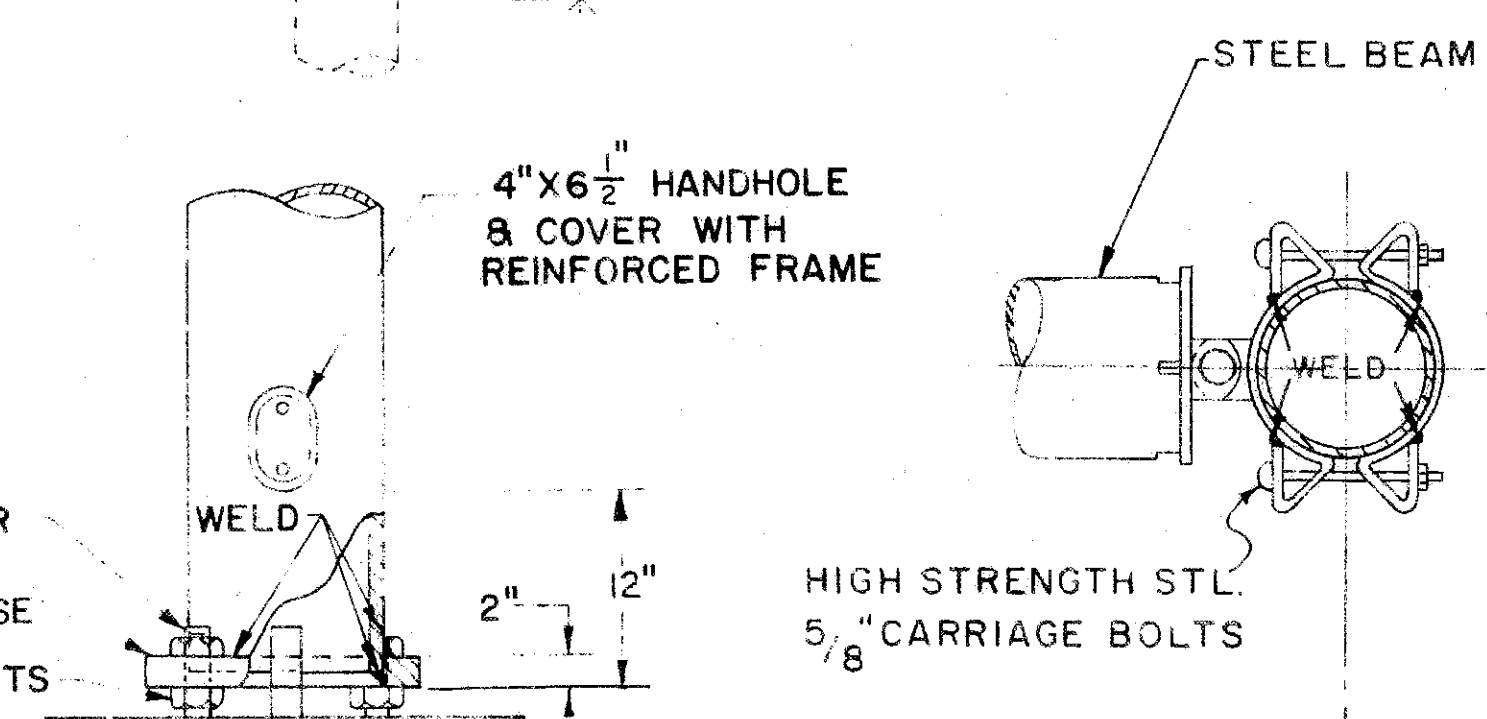
SOILS - THE FOUNDATION DETAILS SHOWN ARE FOR AVERAGE SOIL CONDITIONS (MEDIUM CLAY, CEMENTED SAND AND GRAVEL, SANDY CLAY, OR STIFF CLAY). FOR POOR SOIL CONDITIONS INCREASE "D" MIN. BY 50% IN DRY OR WET SAND, 60% IN SILTY CLAY, 100% IN SOFT CLAY, AND FROM 75% TO 150% IN WET SILT, DEPENDING ON QUICKSAND ACTION.

REINFORCING STEEL - REINFORCING STEEL AS SHOWN IN DETAIL SHALL BE INSTALLED WHEN "D" EXCEEDS THE ANCHOR BOLT LENGTH BY MORE THAN 3'. THE COST AND PLACEMENT OF REINFORCING STEEL SHALL BE INCLUDED IN THE BID PRICE FOR CLASS "C" CONCRETE.

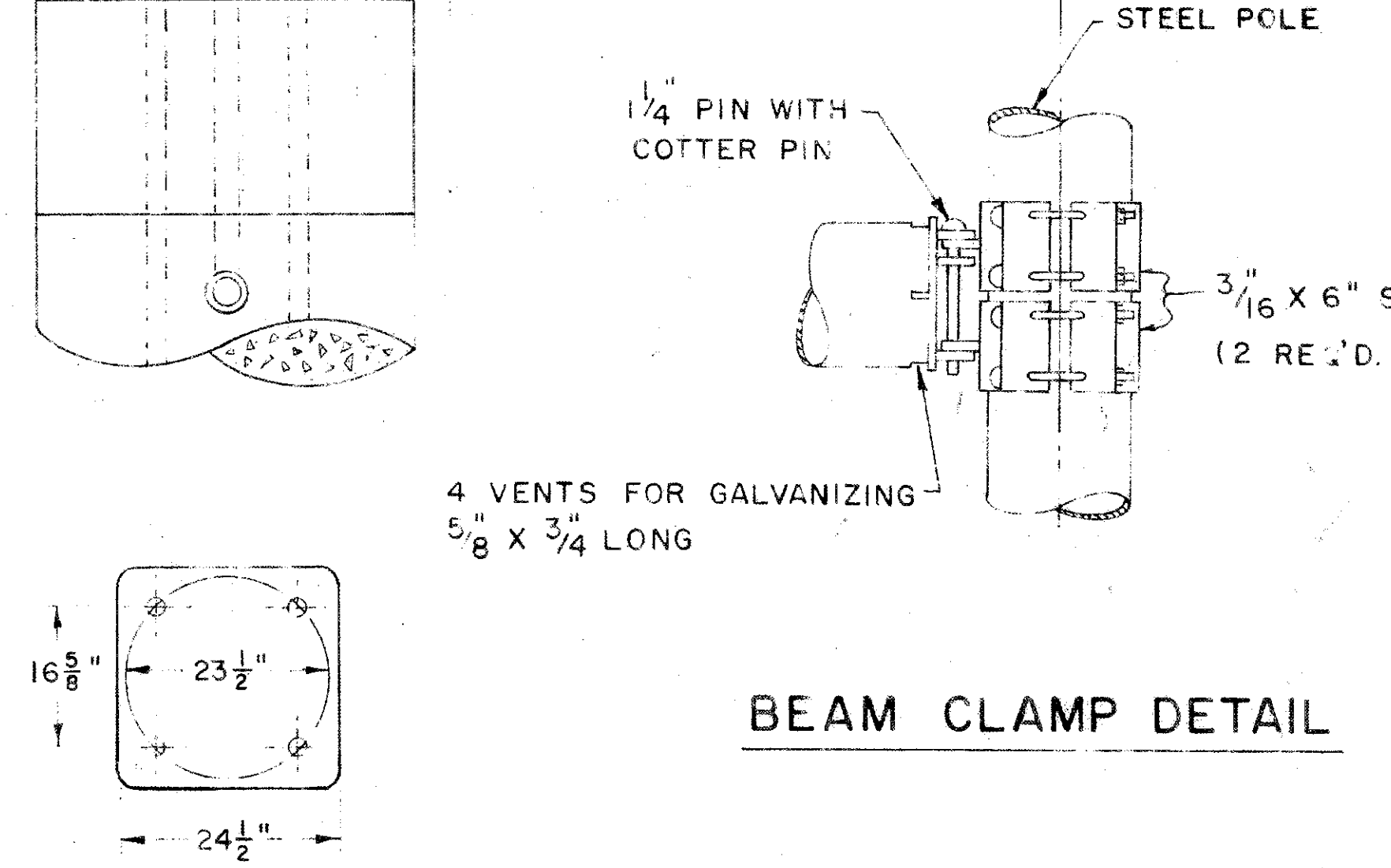
DESIGN - THE DESIGN OF OVERHEAD SUPPORTS IS IN ACCORDANCE WITH A.A.S.H.O. SPECIFICATION FOR THE DESIGN AND CONSTRUCTION OF STRUCTURAL SUPPORTS FOR HIGHWAY SIGNS, ADOPTED JUNE 12, 1961.



SIGN ATTACHMENT DETAIL



BEAM CLAMP DETAIL



FOUNDATION DETAIL

POLE DETAIL

DESIGN NO.	SPAN	BEAM HALVES FOR MAX. SPAN **	END POLE SIZE
1	4'-6" THRU 5'-3"	3ga., 10.5" X 7" X 25'-0"	7ga., 16" X 12.92" X 22'-0"
2	5'-6" THRU 6'-3"	7ga., 14" X 9.8" X 30'-0"	7ga., 16" X 12.92" X 22'-0"
3	6'-6" THRU 7'-3"	7ga., 14" X 9.1" X 35'-0"	7ga., 16" X 12.92" X 22'-0"
4	7'-6" THRU 8'-3"	7ga., 16" X 10.4" X 40'-0"	7ga., 16" X 12.92" X 22'-0"

SPAN FT.	MAX. SIGN AREA, SQ. FT.					
	20'	30'	40'	50'	60'	70'
50	130	155	185			
60	125	150	175	200		
70	90	110	130	150	175	
80	100	120	140	160	185	210

BUREAU OF TRAFFIC
OHIO DEPARTMENT OF HIGHWAYS

OVERHEAD SIGN SUPPORT I-129 No.13.2

APPROVED *Robert L. Conner*
ENGINEER OF TRAFFIC

DATE 8-18-61
11-16-61
1-27-62