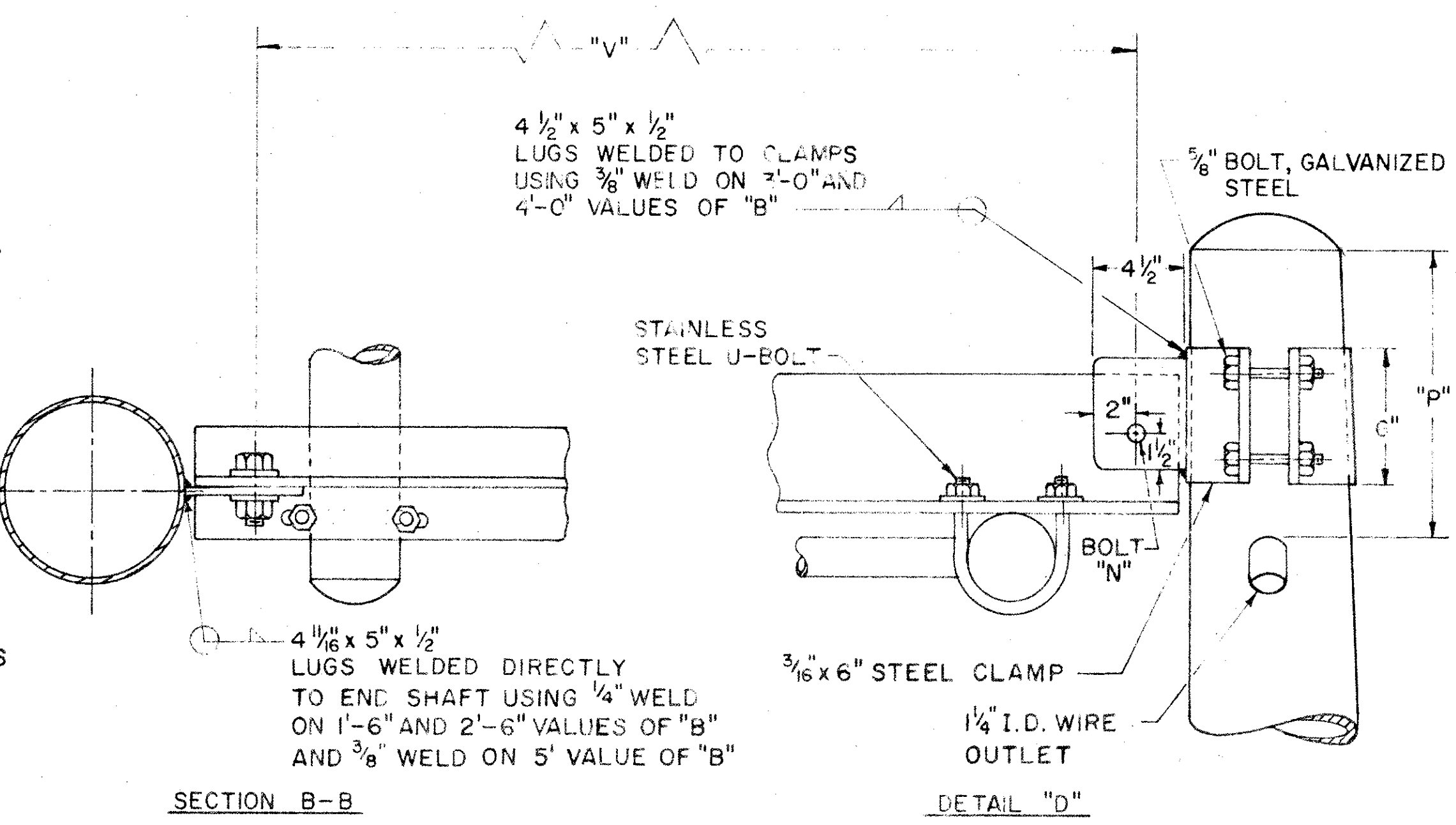


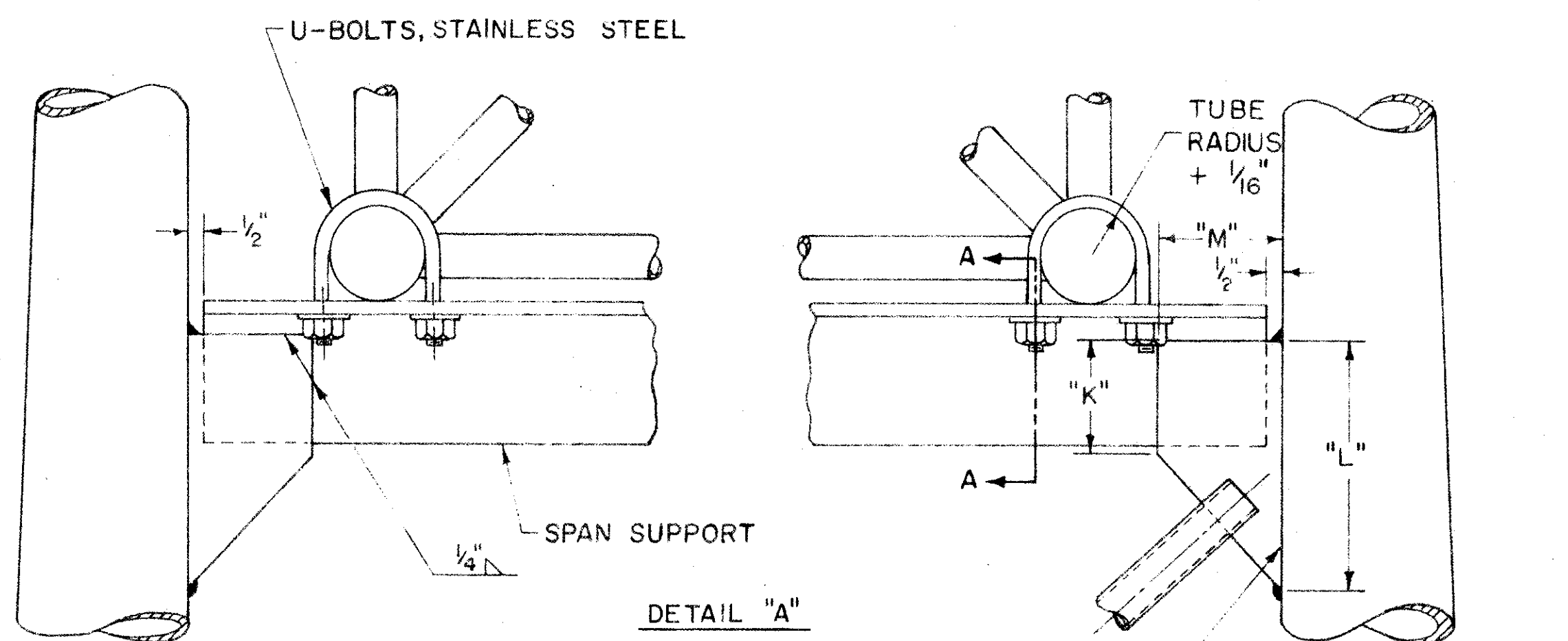
* NOTE: ELEVATION OF TOP OF FOUNDATIONS SHALL BE BUILT UP SO THAT THE 17' MINIMUM CLEARANCE IS MAINTAINED BETWEEN THE HIGHWAY CROWN AND THE BOTTOM OF SIGN. SEE SHEET 148 FOR FOUNDATION DEPTH.

DESIGN - THE DESIGN OF OVERHEAD SUPPORTS IS IN ACCORDANCE WITH A.A.S.H.O. SPECIFICATION FOR THE DESIGN AND CONSTRUCTION OF STRUCTURAL SUPPORTS FOR HIGHWAY SIGNS, ADOPTED JUNE 12, 1961.

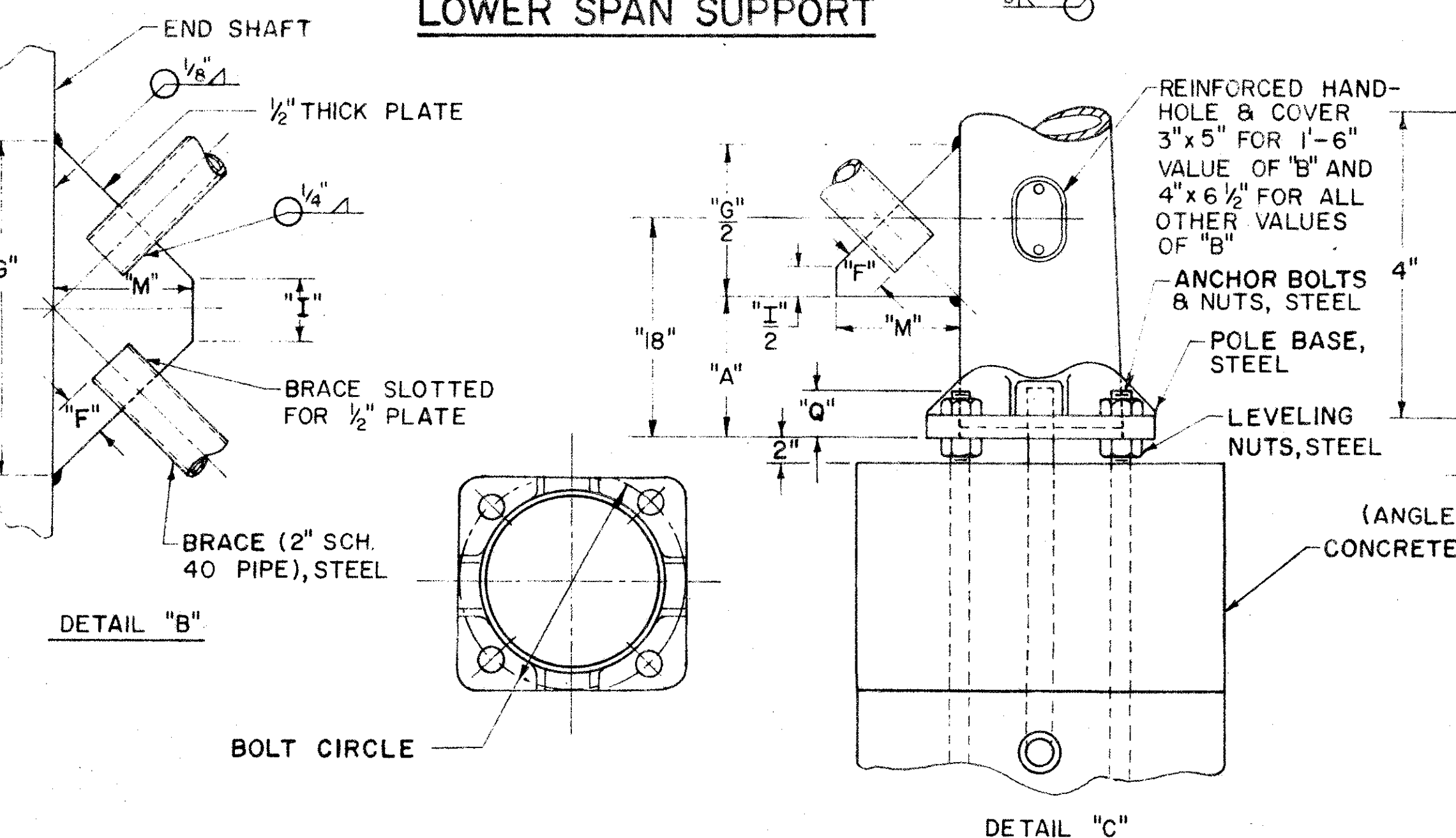
DIM. B	END SHAFT	BRACE LENGTH	A	C	D	E	F	G	SPAN SUPPORT (SECTION A-A)	I	SIGN AREA	K	L	M	DIA. N	P	Q	ANCHOR BOLTS	U BOLTS	BOLT CIRCLE	V
1'-6"	5" X 3.3" X 24'-3", 7GA	5'-1"	5 1/4"	5'-2 1/2"	2'-9"	2'-3"	1 1/2"	11"	1/4" ANGLE X 2'-2"	7 3/4"	100	6 7/8"	8 1/2"	4"	5/8"	12"	1 3/4"	3/4 X 84	5/8"	8"	1'-9 5/8"
2'-6"	7" X 3.54" X 24'-9", 7GA	5'-7 1/2"	5 1/4"	5'-1"	3'-10"	3'-3"	1 1/2"	9"	3/8" ANGLE X 3'-2"	3 1/2"	200	4 3/4"	7 1/4"	4 1/2"	5/8"	12"	2 1/4"	1 1/4 X 84	5/8"	10"	2'-9 5/8"
3'-0"	8" X 4.5" X 25'-0", 3GA	5'-10 3/16"	6 5/8"	4'-11 3/4"	4'-5"	3'-9"	1 1/2"	10"	SPLIT TEE 3'-8"	3 1/2"	500	4 3/4"	8"	4 1/2"	1"	12"	2 5/8"	1 1/4 X 90	5/8"	11"	3'-3 5/8"
4'-0"	8" X 6.18" X 26'-0", 3GA	6'-7 1/8"	6 1/4"	4'-10 1/4"	5'-7"	4'-11"	1 1/2"	9 1/2"	SPLIT TEE 4'-10"	5/8"	500	4 3/8"	7 3/4"	4 1/2"	1"	18"	2 1/4"	1 1/4 X 96	5/8"	10"	4'-5 5/8"
5'-0"	8" X 6.18" X 26'-0", 3GA	7'-3 1/4"	7 1/4"	4'-8 1/2"	6'-7"	5'-11"	1 3/4"	11 1/4"	SPLIT TEE 5'-10"	-	600	3 1/2"	7 3/4"	4 1/2"	1"	12"	2 1/4"	1 1/4 X 96	3/4"	10"	5'-5 5/8"



UPPER SPAN SUPPORT



LOWER SPAN SUPPORT



POLE BASE DETAIL

NOTES

GENERAL:

THE SIZE OF DIMENSION "B" ON THE REQUIRED ALUMINUM BOX SIGN SPAN SHALL GOVERN THE SIZE OF THE GALVANIZED STEEL END FRAME. TO SELECT PROPER STEEL END FRAME, CHOOSE THE ALUMINUM CROSS-MEMBER SPECIFIED, THEN USE DIMENSION "B" IN THE TABLE BELOW.

MATERIALS:

ALL COMPONENTS OF THE VERTICAL END FRAMES, INCLUDING HARDWARE, SHALL BE STEEL IN ACCORDANCE WITH SUPPLEMENTAL SPECIFICATION I-129 UNLESS OTHERWISE SPECIFIED. THE CONCRETE FOUNDATIONS FOR STEEL END FRAMES SHALL BE IN ACCORDANCE WITH THE DIMENSIONS SHOWN ON THIS DRAWING.

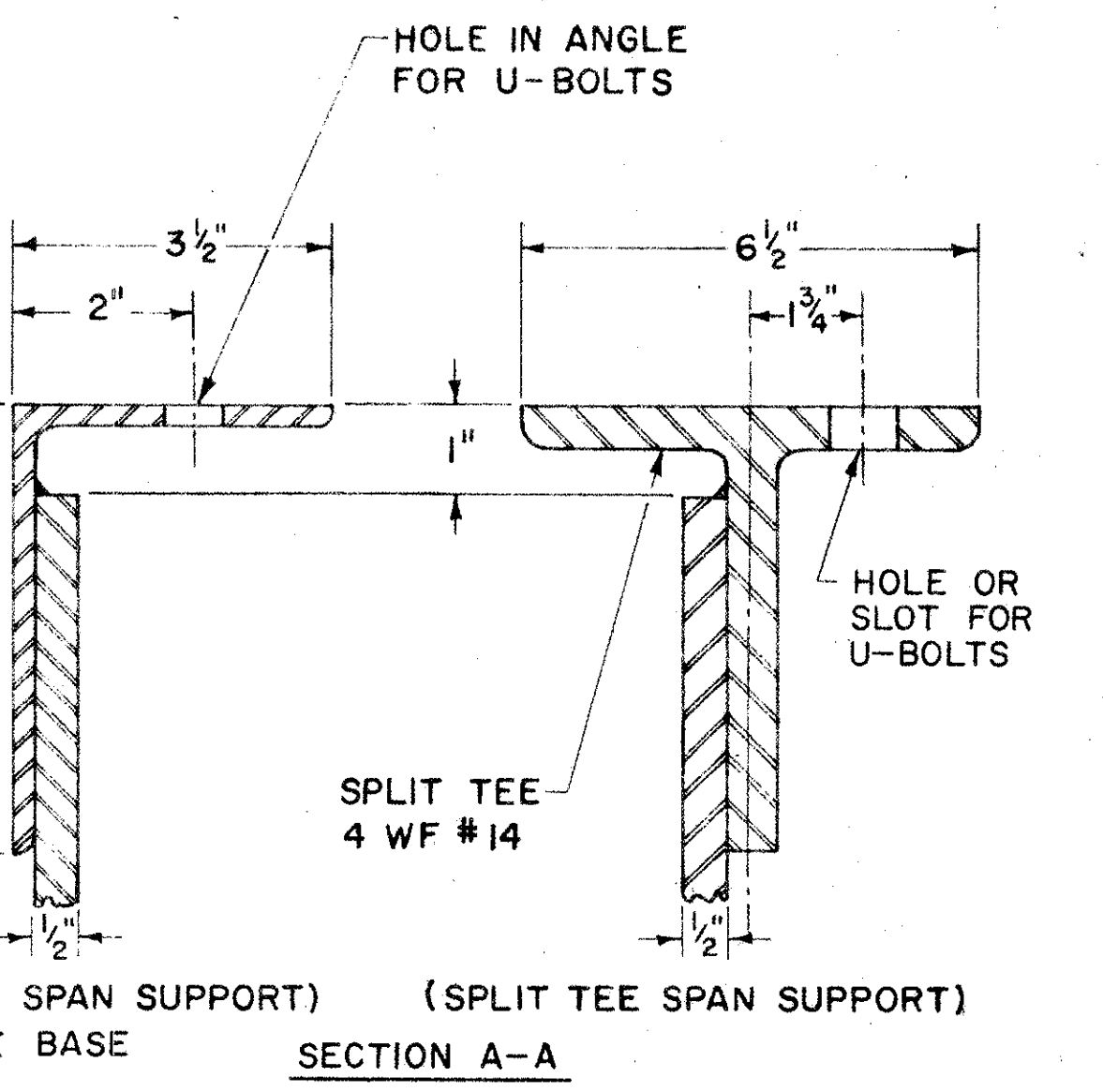
ALL MATERIALS FOR THE BOX TRUSS SIGN SPANS SHALL BE IN ACCORDANCE WITH DRAWINGS I-129 NOS 8.1 THROUGH 8.6

STEEL POLE BASES AND END CAPS SHALL CONFORM TO THE REQUIREMENTS OF ASTM SPECIFICATION A30 GRADE B.

AFTER FABRICATION TAPERED POLES SHALL HAVE A MINIMUM YIELD STRENGTH OF 48,000 PSI. THE ENTIRE STEEL END FRAME SHALL BE HOT DIP GALVANIZED IN ACCORDANCE WITH SEC. M-7.4 (d).

ERECTION

THE GALVANIZED CONDUIT SHALL BE INCLUDED IN THE UNIT PRICE BID FOR OVERHEAD SIGN SUPPORTS FOR PAYMENT



BUREAU OF TRAFFIC
OHIO DEPARTMENT OF HIGHWAYS

GALVANIZED STEEL I-129
END FRAME No.8EF

DATE 3-7-62

APPROVED _____
ENGINEER OF TRAFFIC