

FED. RD. DIVISION	STATE	PROJECT
2	OHIO	

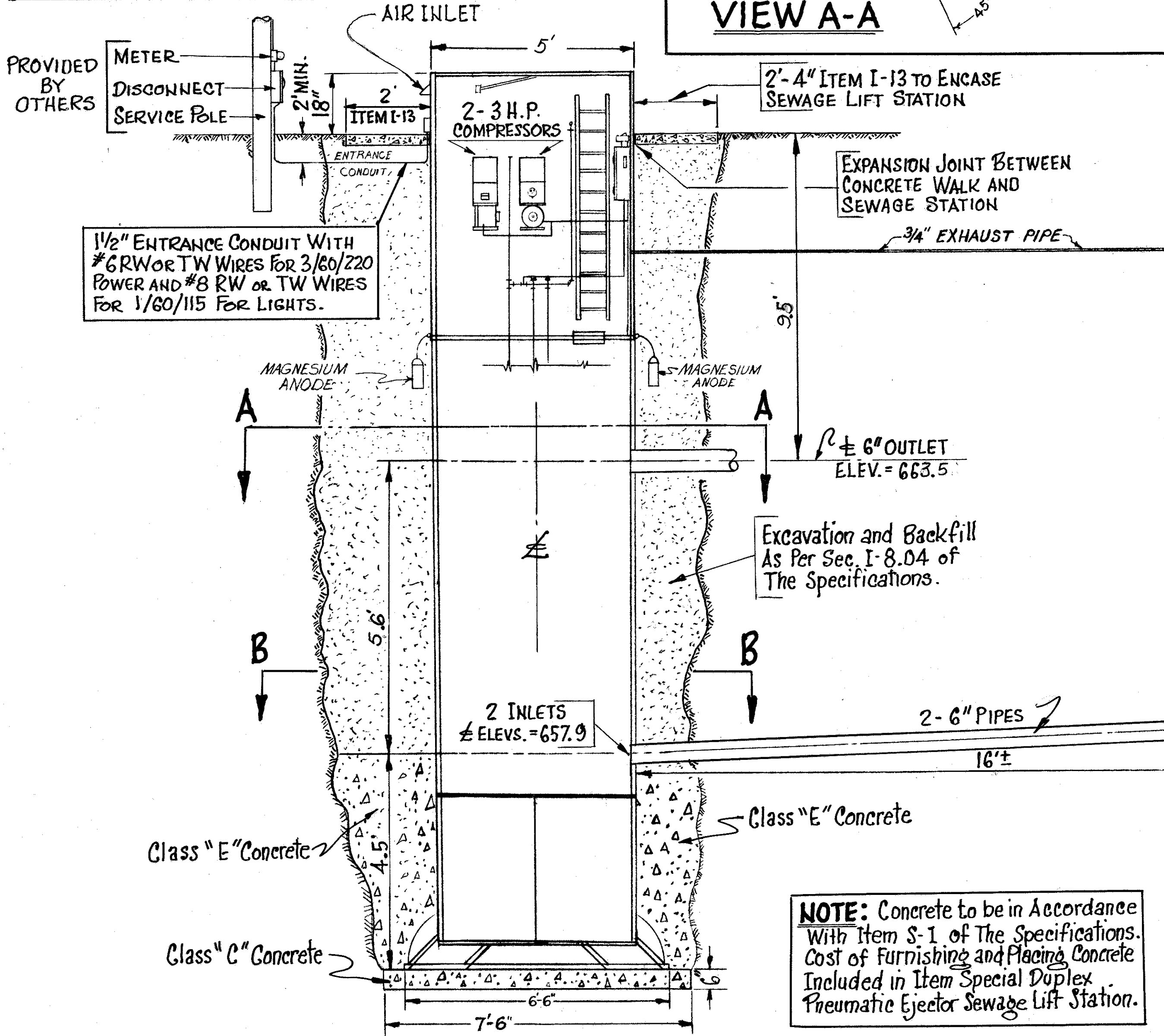
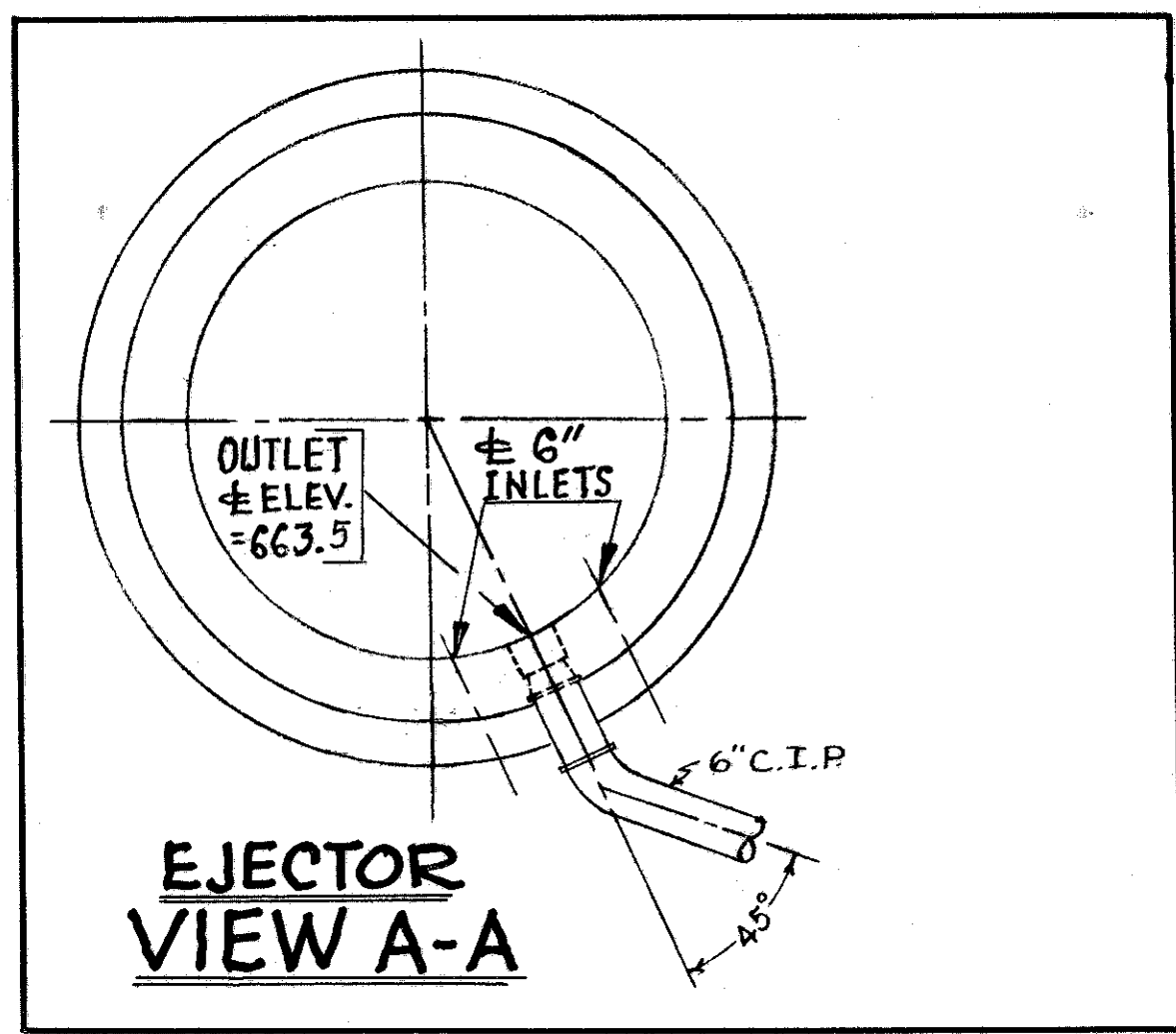
145  
204

LAKE COUNTY  
SEC. LAK-44-3.79

**NOTE:** COST OF FURNISHING AND INSTALLING EXTERNAL ELECTRICAL WIRING AND EQUIPMENT TO BE INCLUDED IN LUMP SUM BID FOR ITEM SPECIAL DUPLEX PNEUMATIC EJECTOR SEWAGE LIFT STATION.

**POWER REQUIREMENTS**

3/60/220 POWER PLUS  
SEPARATE 1/60/115 FOR LIGHTS.



PROVIDED BY OTHERS  
METER  
DISCONNECT  
SERVICE POLE

2 MIN. 18"

2' ITEM I-13

ENTRANCE CONDUIT

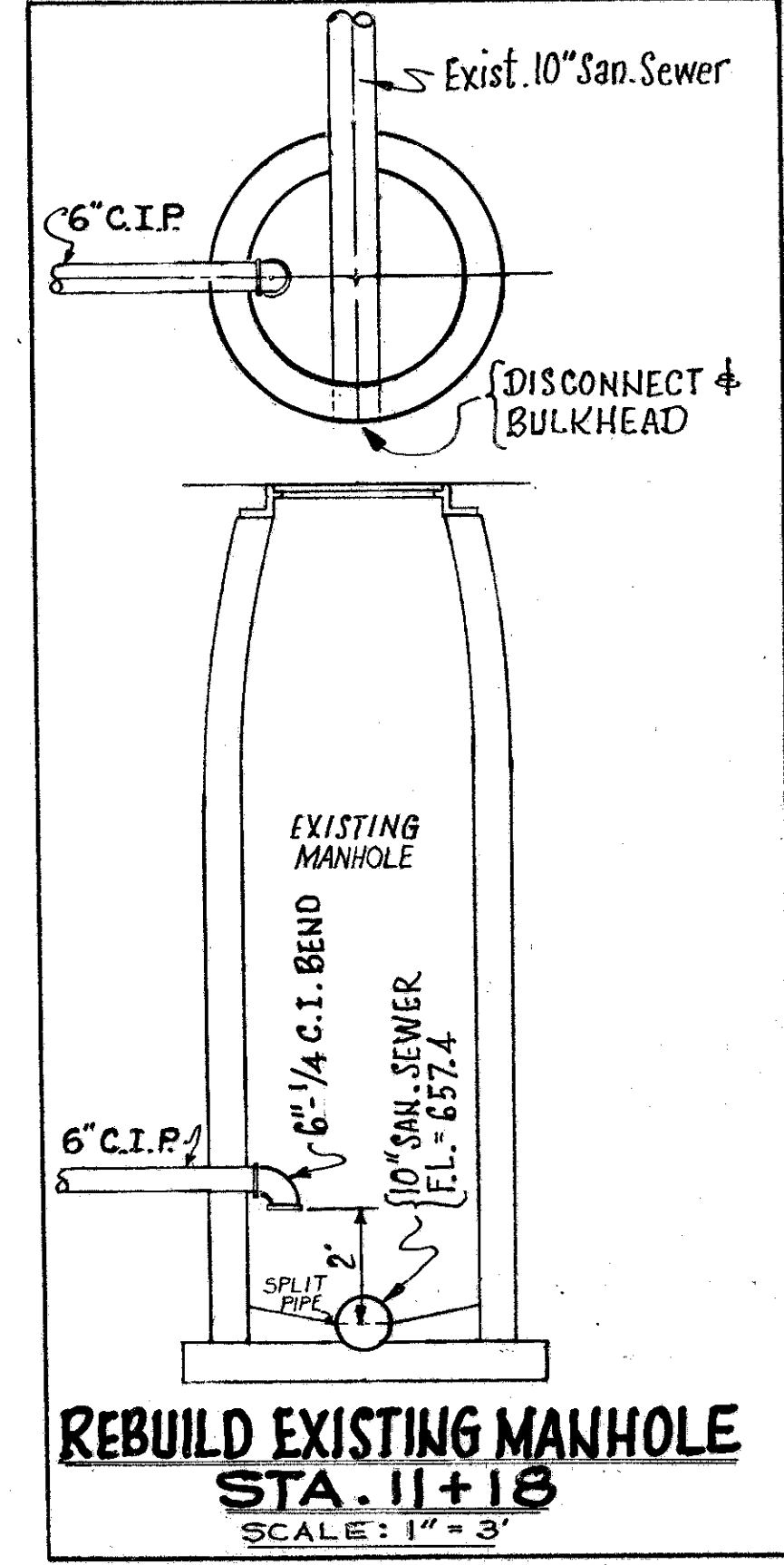
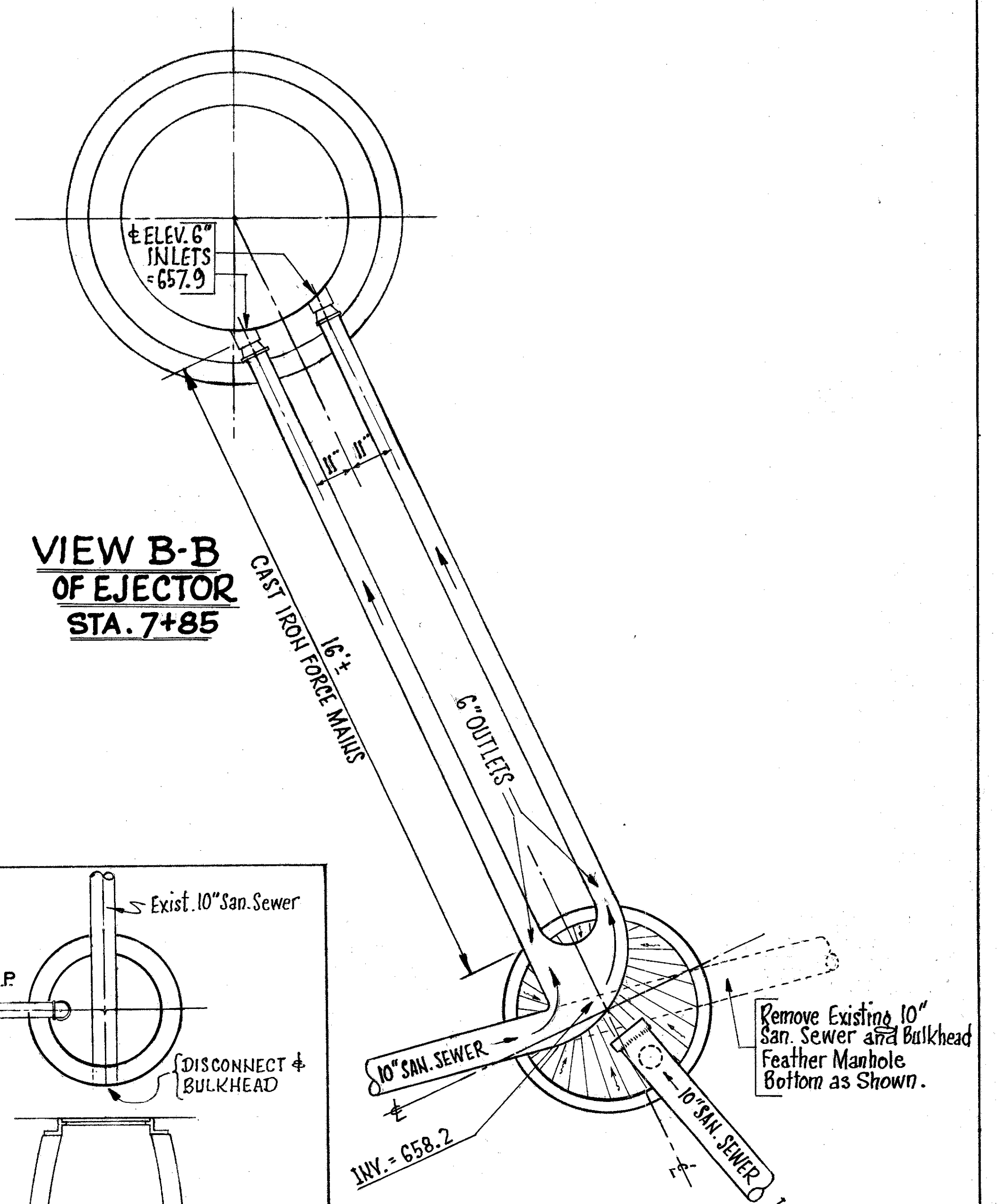
1 1/2" ENTRANCE CONDUIT WITH #6 RW OR TW WIRES FOR 3/60/220 POWER AND #8 RW OR TW WIRES FOR 1/60/115 FOR LIGHTS.

**NOTE:** Concrete to be in Accordance With Item S-1 of The Specifications. Cost of Furnishing and Placing Concrete Included in Item Special Duplex Pneumatic Ejector Sewage Lift Station.

**SMITH & LOVELESS**  
**"DU-O-JECT" DUPLEX**  
**PNEUMATIC EJECTOR LIFT STATION**  
**OR TEX-VIT "DELTA-JECT" PNEUMATIC EJECTOR LIFT STATION**  
**OR APPROVED EQUAL**  
**STA. 7+85 (20' LEFT)**

**REBUILD BOTTOM OF MANHOLE TO RECEIVE (2) 6" PIPES**  
**STA. 7+92**

Note: The unit price bid for "Item I-8, Rebuild Sanitary Manhole, as per plan" shall also include payment for adjustment to proposed grade of the existing manhole frame and cover.



**VIEW B-B OF MANHOLE**  
**STA. 7+92**

Remove Existing 10" San. Sewer and Bulkhead Feather Manhole Bottom as Shown.