

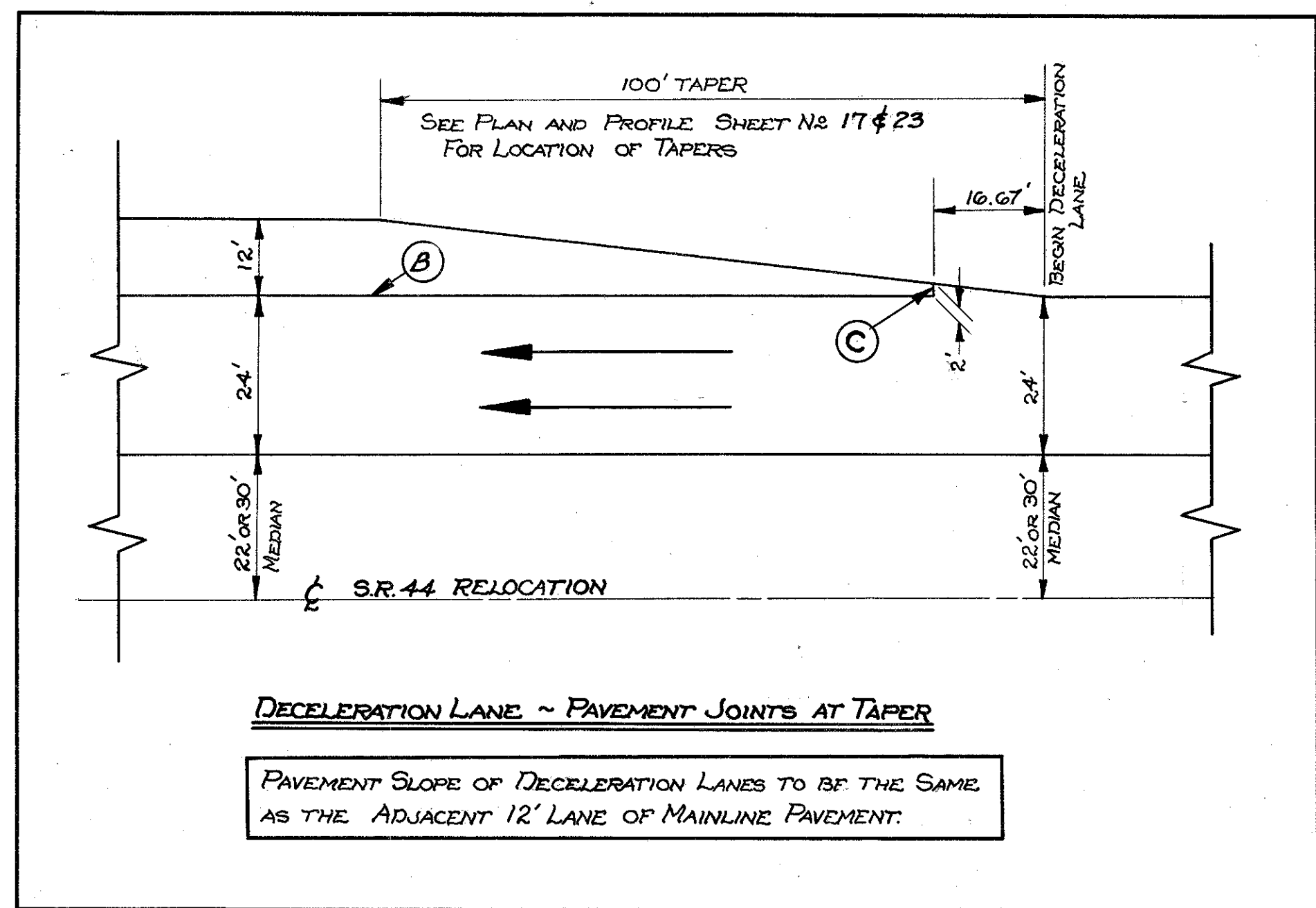
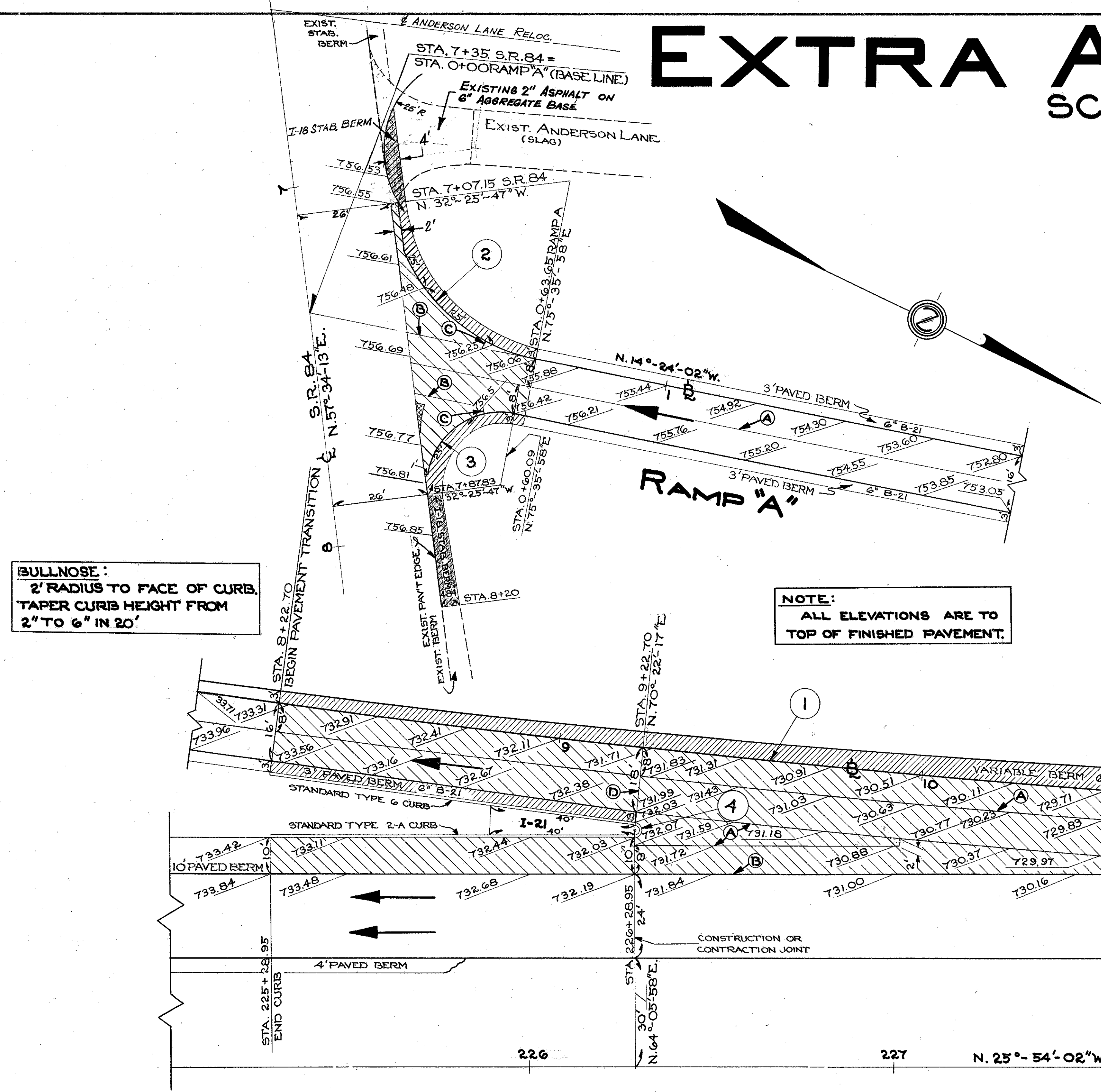
EXTRA AREA DETAIL

SCALE: 1" = 20'

FED. RD. DIVISION	STATE	PROJECT
2	OHIO	

118
204

LAKE COUNTY
LAK.-44-3.79



BULLNOSE:
2' RADIUS TO FACE OF CURB.
TAPER CURB HEIGHT FROM 2" TO 6" IN 20'

NOTE:
ALL ELEVATIONS ARE TO TOP OF FINISHED PAVEMENT.

PT. STA. 13+40.83 RAMP 'A' =
STA. 230+45.76 S.R. 44

CURVE DATA

① D = 1°-30'-00"	③ D = 286°-28'-44"
Δ = 11°-30'-00"	Δ = 108°-01'-45"
R = 3819.72'	R = 20.00'
T = 384.63'	T = 27.54'
L = 766.67'	L = 37.71'
Ch = 765.38'	Ch = 32.37'
E = 19.32'	

BULLNOSE DATA

② D = 114°-35'-30"	④ Δ = 173°-43'-41"
Δ = 71°-58'-15"	R = 2'
R = 50.00'	L = 6.06'
T = 41.93'	
L = 62.81'	
Ch = 64.26'	

LEGEND

(A) STANDARD LONGITUDINAL JOINT
(B) STANDARD KEY JOINT WITHOUT TIE BARS
(C) EXPANSION JOINT WITHOUT DOWELS
(D) STANDARD EXPANSION JOINT
NEW PAVEMENT
PAVED BERM
STABILIZED BERM
PAVEMENT REMOVAL; REPLACE WITH NEW PAVEMENT

EXTRA AREA QUANTITIES

LOCATION	FROM	TO	T-71	B-21	B-112	I-22	T-31	I-21	I-12	E-8	I-18
			9" REINF. PORT. CEM'T CONC. PAV'T	6" WATERPROOF AGGREGATE BASE COURSE	POROUS BASE COURSE	6" SUBBASE	BITUMINOUS MATERIAL FOR SURFACE TREATMENT	N#6 AGGREGATE FOR SURFACE TREATMENT	PORT. CEM'T CONCRETE MEDIAN	STANDARD TYPE 2A CONC. CURB	STANDARD TYPE G CONC. CURB
	SQ.YDS.	CU.YDS.	CU.YDS.	CU.YDS.	GALLONS	CU.YDS.	SQ.YDS.	LIN.FT.	LIN.FT.	SQ.YDS.	CU.YDS.
RAMP A	0+00	0+63.65	111	6	5	31	10	0.3	—	—	4
RAMP A	8+22.70	13+40.83	1232	58	25	266	90	2.9	24.8	106	100
TOTAL (4-388(12) RURAL)			1343	64	30	297	100	3.2	24.8	106	100