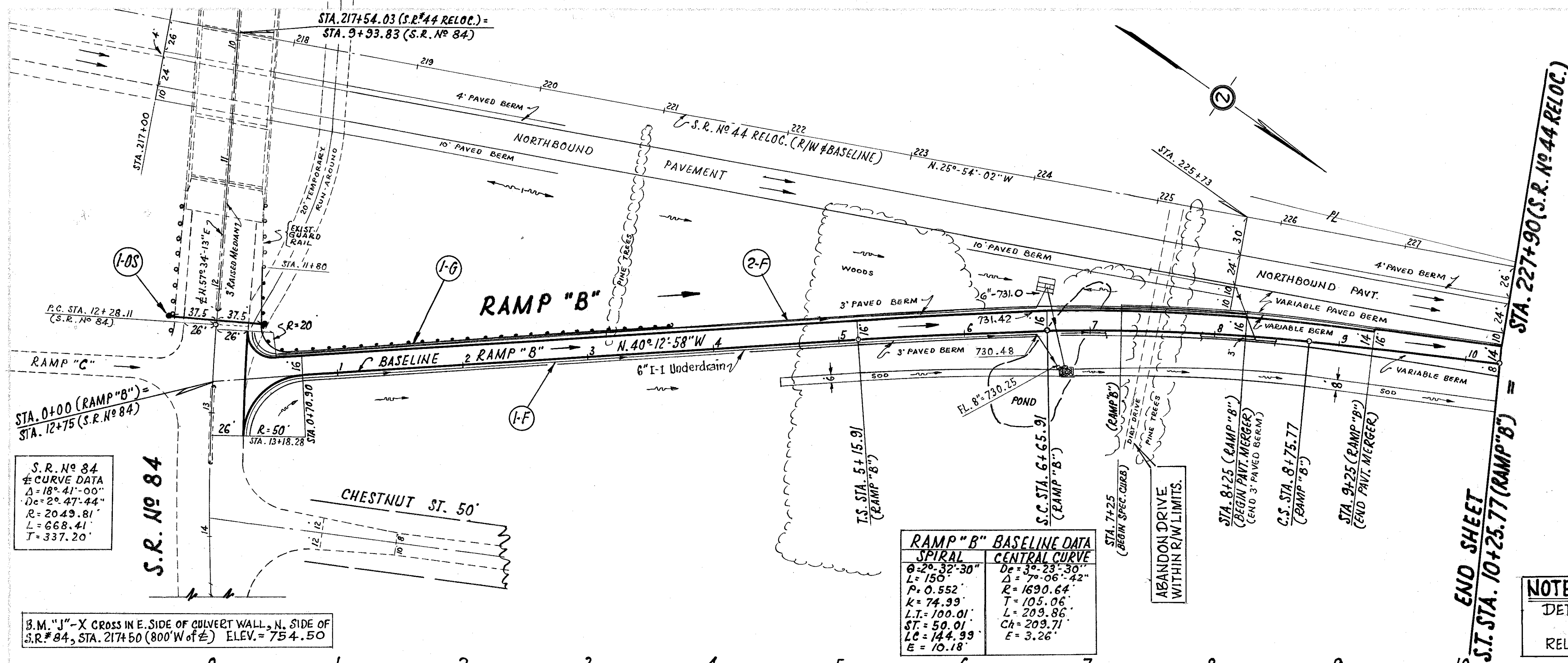


LAKE COUNTY
Sec. LAK-44-3.79



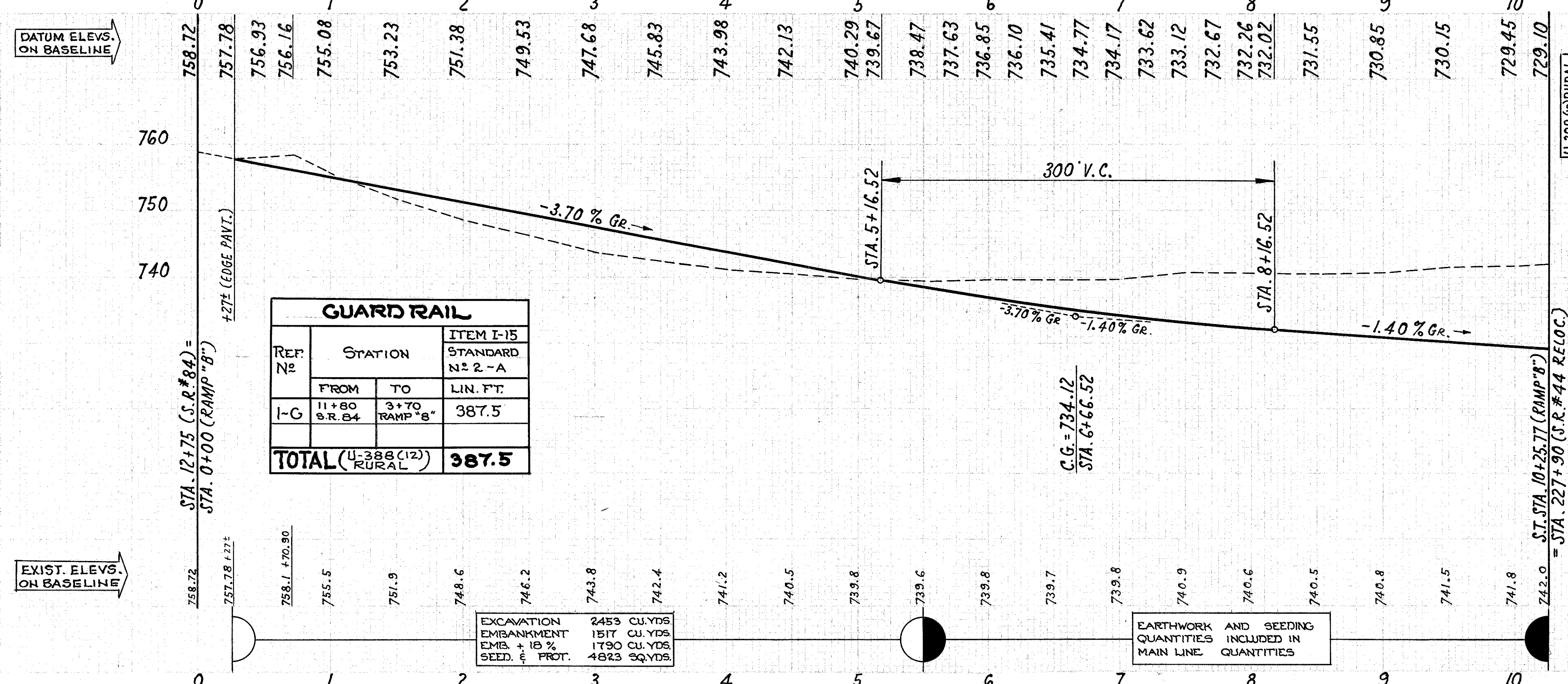
S.R. No 84
± CURVE DATA
Δ = 18° 41' 00"
De = 2° 47' 44"
R = 2049.81'
L = 668.41'
T = 337.20'

RAMP "B" BASELINE DATA

SPIRAL		CENTRAL CURVE	
θ = 2° 32' 30"	D _s = 36.23' 30"	D = 71.06' 42"	R = 1690.64'
L = 150'	Δ = 71° 06' 42"	T = 105.06'	L = 209.86'
P = 0.552'	k = 74.99'	Ch = 209.71'	E = 3.26'
L.T. = 100.01'	ST = 50.01'	LC = 144.99'	E = 10.18'

B.M. "J"-X CROSS IN E. SIDE OF CULVERT WALL, N. SIDE OF S.R. #84, STA. 217+50 (800' W of ±) ELEV. = 754.50

NOTE: FOR ADDITIONAL RAMP "B" DETAILS, SEE SHEET No 119.
FOR PLAN & PROFILE OF S.R. No 44 RELOCATION, SEE SHEET No 16.



GUARD RAIL

REF. No.	STATION		ITEM I-15 STANDARD No 2-A LIN. FT.
	FROM	TO	
I-G	11+80 S.R. 84	3+70 RAMP "B"	387.5
TOTAL (U-388 (12) RURAL)			387.5

EXCAVATION	2453 CU. YDS.
EMBANKMENT	1517 CU. YDS.
EMB. + 10% PROT.	1790 CU. YDS.
SEED. PROT.	4823 SQ. YDS.

EARTHWORK AND SEEDING QUANTITIES INCLUDED IN MAIN LINE QUANTITIES

I-129 OVERHEAD SIGN

REF. No.	STATION	DESIGN No *	SPAN	SIGN SUPPORTS	SUPPORT HEIGHT	CONCRETE FOR SIGN SUPPORT FOUNDATIONS
I-OS	12+25 SR84	4	75'	4	4'	4

* AS PER DWG. I-129 No 13.2 (SEE SHEET No 150)

SIGN SUPPORT LOCATIONS

No.	LEFT OF	RIGHT OF
1	24.0	
2	16.0	
3		4.0'
4		12.0'

UNDERDRAINS

REF. No.	STATION	I-1 LIN. FT.		I-5 EA. S-29 CU. YD. EROSION	
		6" CLASS 1-3 SHALLOW	CL. F-1 M-6.4 (N/C) (C) 8"	6" 60° BEND	Nº 2 AGGR.
I-F	SR.84 6+76	678	10	1	0.3
2-F	0+33 8+25	782	16	1	
TOTAL (U-388 (12) RURAL)		1460	16	2	0.3

PLAN & PROFILE ... RAMP "B" ... STA. 0+00 to S.T. STA. 10+25.77