

B.M. # 10 - R.R. SPIKE SET IN 12" OAK, STA. 322+91
(R/W BASELINE) 85' L OF E. ADJ. ELEV. = 633.011

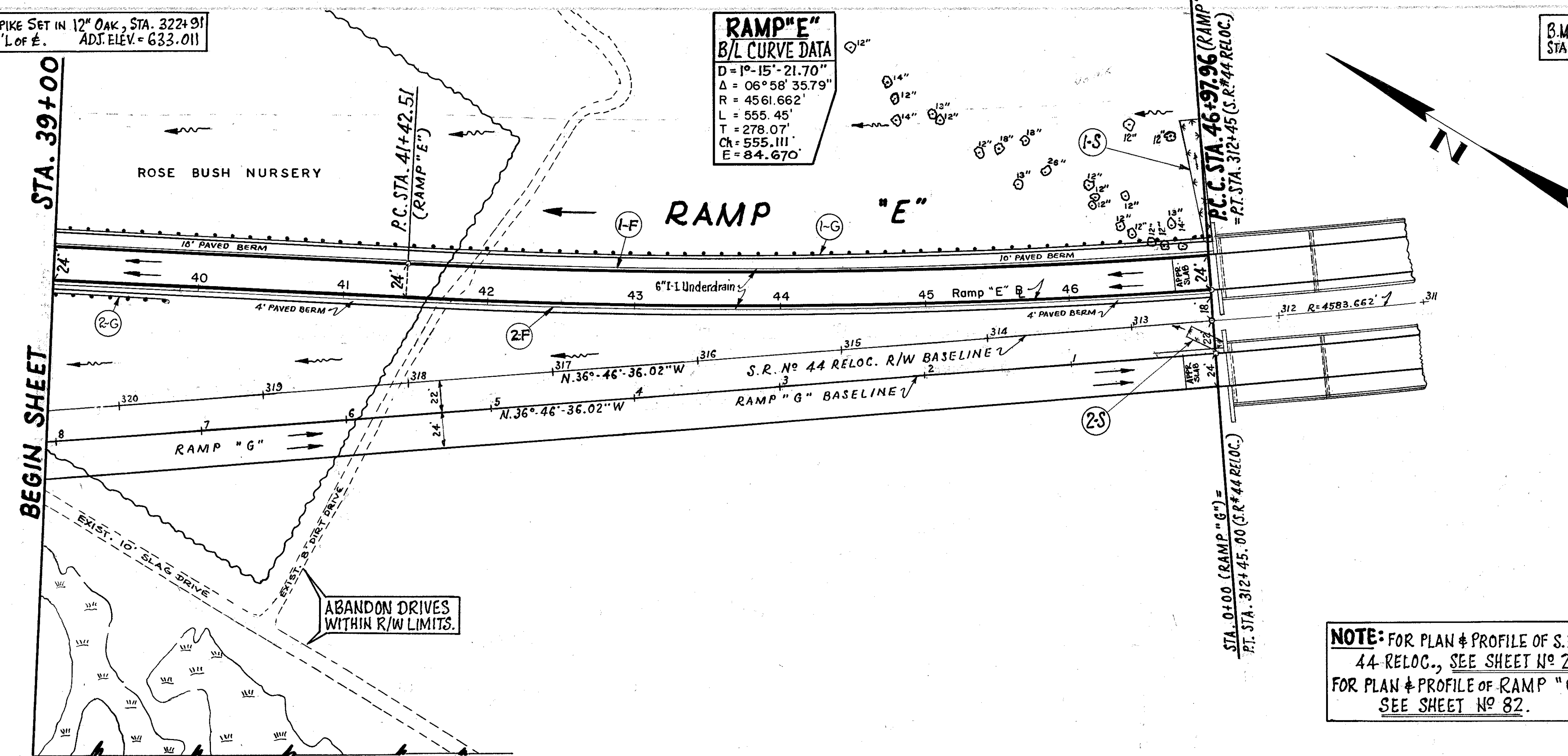
RAMP "E"
B/L CURVE DATA
D = 10'-15"-21.70"
Δ = 06°58'35.79"
R = 4561.662'
L = 555.45'
T = 278.07'
Ch = 555.111'
E = 84.670'

B.M. # 9 - R.R. SPIKE IN POLE (NO NUMBER)
STA. 311+82 (181' L OF E). ADJ. ELEV. = 638.782

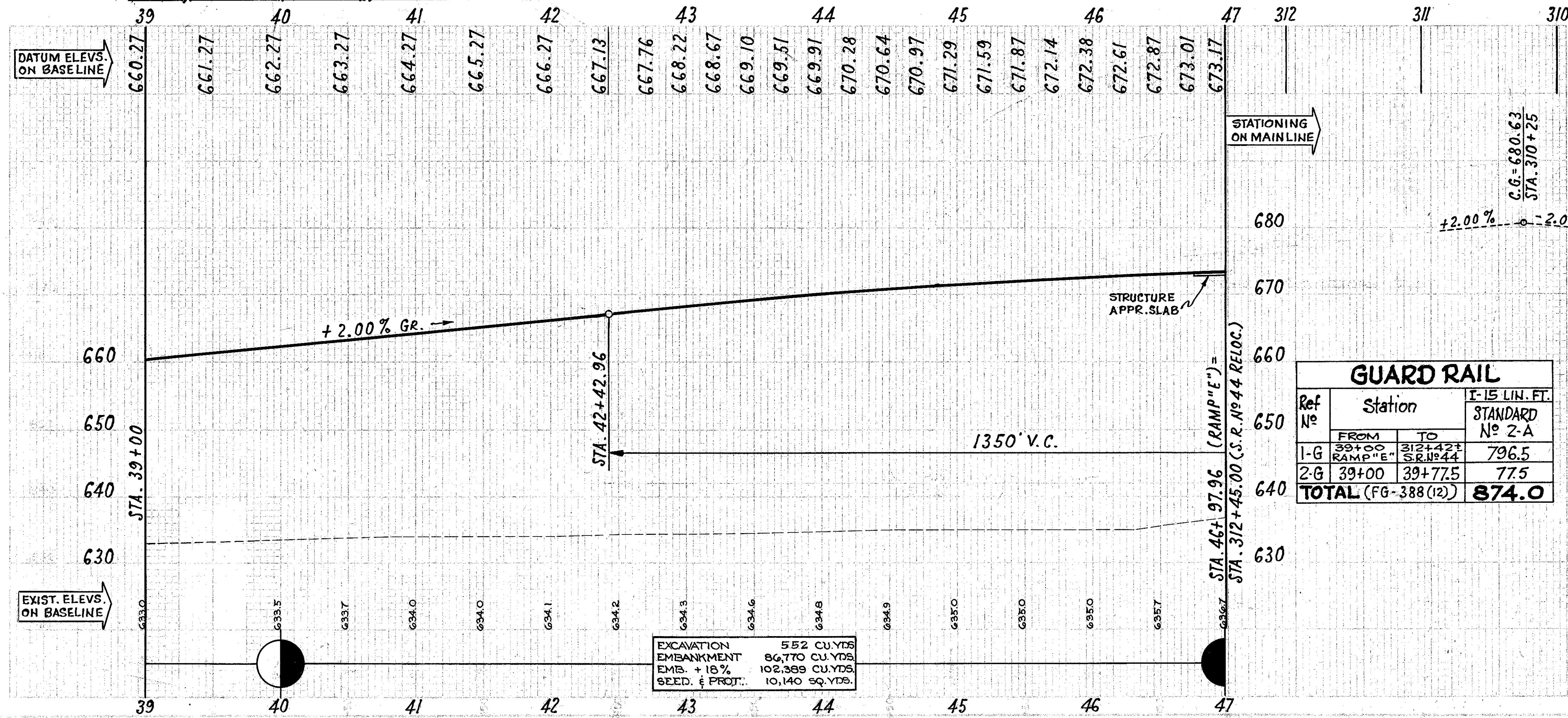
NO.	DATE	REVISION
2	OHIO	

102
204

LAKE COUNTY
LAK-44-3.79



NOTE: FOR PLAN & PROFILE OF S.R. No 44 RELOC., SEE SHEET No 25.
FOR PLAN & PROFILE OF RAMP "G", SEE SHEET No 82.



EXCAVATION	552 CU.YDS.
EMBANKMENT	86,770 CU.YDS.
EMB. + 18%	102,389 CU.YDS.
SEED. & PROT.	10,140 SQ.YDS.

UNDERDRAINS			
Ref. No	Station		ITEM I-1 LIN. FT.
	FROM	TO	6" CLASS I-3
1-F	39+00	STRUCTURE	797
2-F	39+00	STRUCTURE	799
TOTAL (FG-388(12))			1596

DRAINAGE			
Ref. No	Location	ITEM I-10 SQ.YDS.	
		SPECIAL BERM & SLOPE PROTECTION	SODDING
1-S	OFF BRIDGE	101	
2-S	OFF BRIDGE		17
TOTAL (FG-388(12))		101	17

SEE SHEET #137 FOR DETAILS.

GUARD RAIL			
Ref. No	Station		I-15 LIN. FT.
	FROM	TO	STANDARD No 2-A
1-G	39+00	312+42.1	796.5
2-G	39+00	39+77.5	77.5
TOTAL (FG-388(12))			874.0