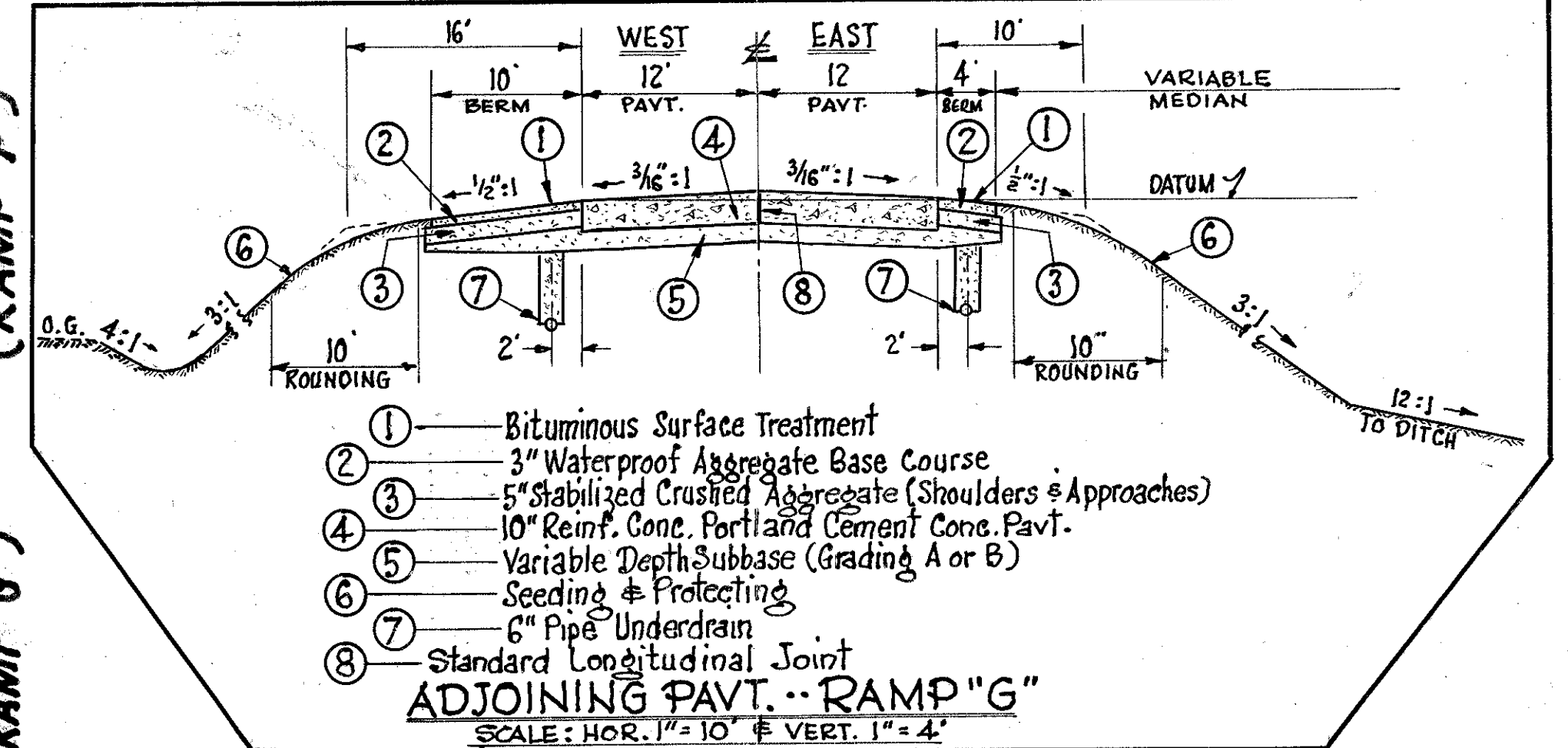
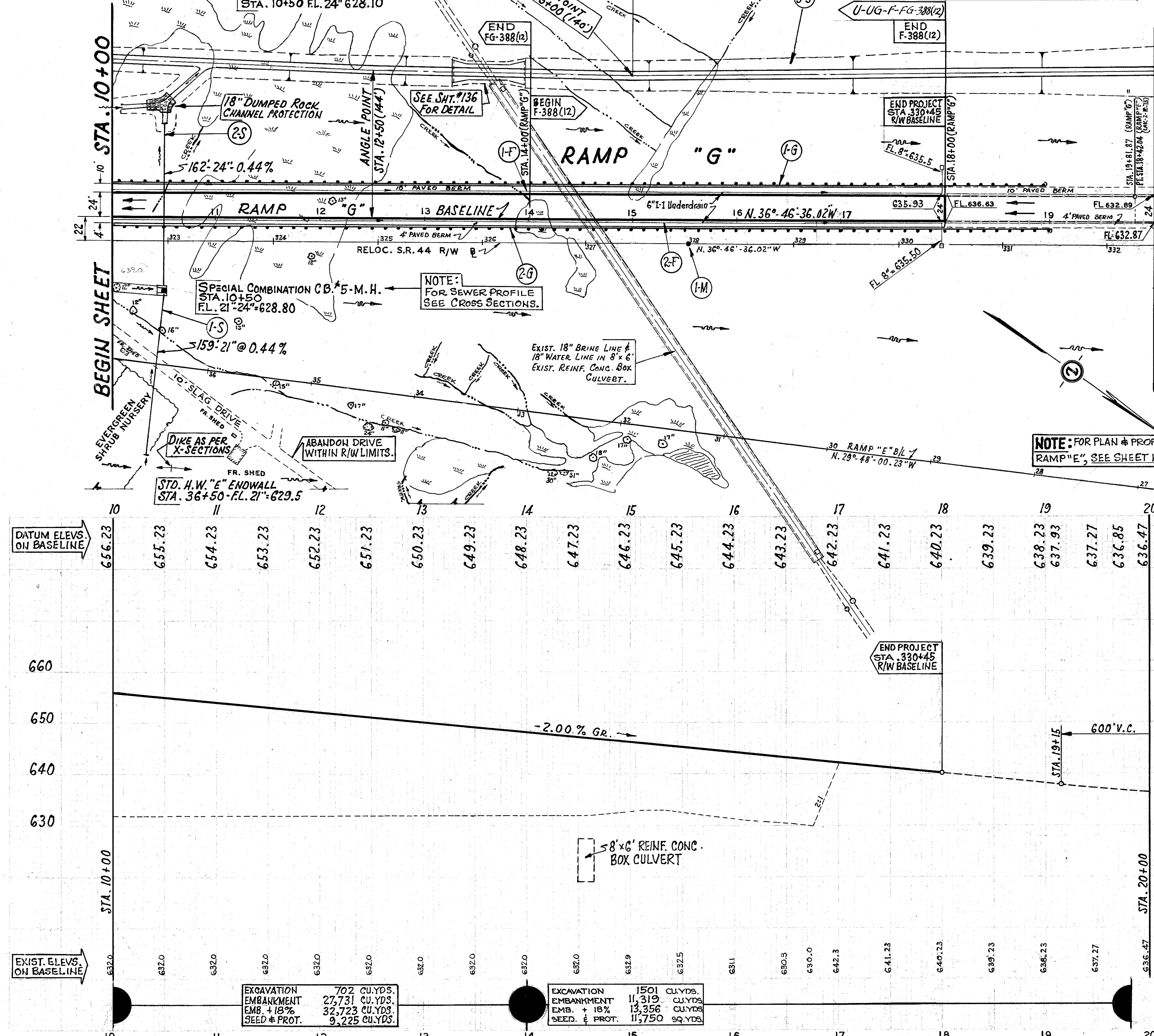


B.M. #10 - R.R. SPIKE SET IN 12" OAK, STA. 222+85
(R/W BASELINE) 165' L OF E. ADJ. ELEV. = 633.011

STD. H.W. "E" ENDWALL
STA. 10+50 FL. 24' 628.10

CHANNEL GRADE
1.28%

NOTE: MARKER WILL BE FURNISHED AND
ERECTED ON THE LEFT BY STATE FORCES
PRIOR TO ACCEPTANCE OF THIS IMPROVEMENT.



DRAINAGE

Ref. No	Station	I-1 LIN. FT.		I-10 SQ. YDS.		I-8 EACH		I-10	I-2	L-10	E-3
		Class A-1 M-6.6 (d)	21" 24"	REINFORCED CONCRETE RIPRAP	SPECIAL COMB. C.B. 5-M.H.	CU. YDS. DUMPED ROCK CHANNEL PROTECTION	MASONRY	SODDING	CU. YDS. CHANNEL EXCAVATION		
I-S	36+50	10+50	159					.36			4
FG 2-S	10+00	11+00		162		1	15	.41	40		267
3-S	10+00	14+00			149						1221
F 3-S	14+00	19+81.87									3307
TOTAL (FG-388(12))			159	162	149	1	15	.77	40	1492	3307
TOTAL (F-388(12))											3307

GUARD RAIL

Ref. No	Station	I-15 LIN. FT. STANDARD NO 2-A	
		FROM	TO
I-G	10+00	18+94	400.0 494.0
2-G	10+00	19+00	400.0 500.0
TOTAL (FG-388(12))			800.0
TOTAL (F-388(12))			994.0

I-8 MONUMENTS

Ref. No	Station	REFERENCE MONUMENT EACH
I-M	328+00	1
TOTAL (F-388(12))		1

UNDERDRAINS

Ref. No	Station	ITEM I-1 LIN. FT.		I-5 EACH		I-29	
		6" CLASS I-3 SHALLOW	8" OUTLET Class F-1 M-6.4 (c)	6" 90° BEND	EROSION PAD NO 2 AGGREGATE	CU. YDS.	
I-F	10+00	17+98	400	410	10	1	0.3
2-F	10+00	17+98	400	410	10	1	0.3
TOTAL (F-388(12))			820	20	2	0.6	
TOTAL (FG-388(12))			800				

EXCAVATION	702 CU.YDS.
EMBANKMENT	27,731 CU.YDS.
EMB. + 18%	32,723 CU.YDS.
SEED & PROT.	9,225 CU.YDS.

EXCAVATION	1501 CU.YDS.
EMBANKMENT	11,319 CU.YDS.
EMB. + 18%	13,356 CU.YDS.
SEED & PROT.	11,750 SQ.YDS.