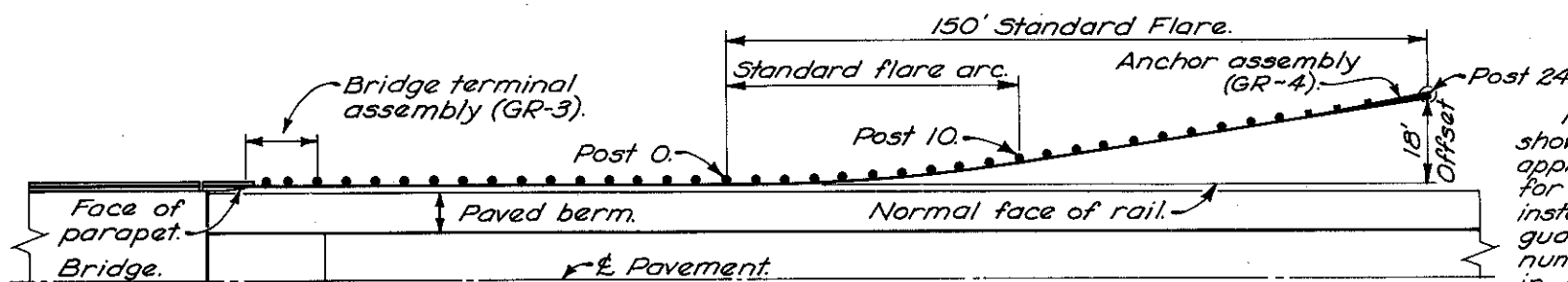


STANDARD FLARE ARC	
Post No. (6'-3" 9/16)	Offset
0	0.00'
1	.05'
2	.19'
3	.43'
4	.76'
5	1.18'
6	1.71'
7	2.32'
8	3.04'
9	3.84'
10	4.74'



### ROADSIDE APPROACH

Post arrangements shown in the roadside approach are designed for application to Type 5 installations. For Type 7 guardrail omit odd numbered posts except in anchor assembly and transition.

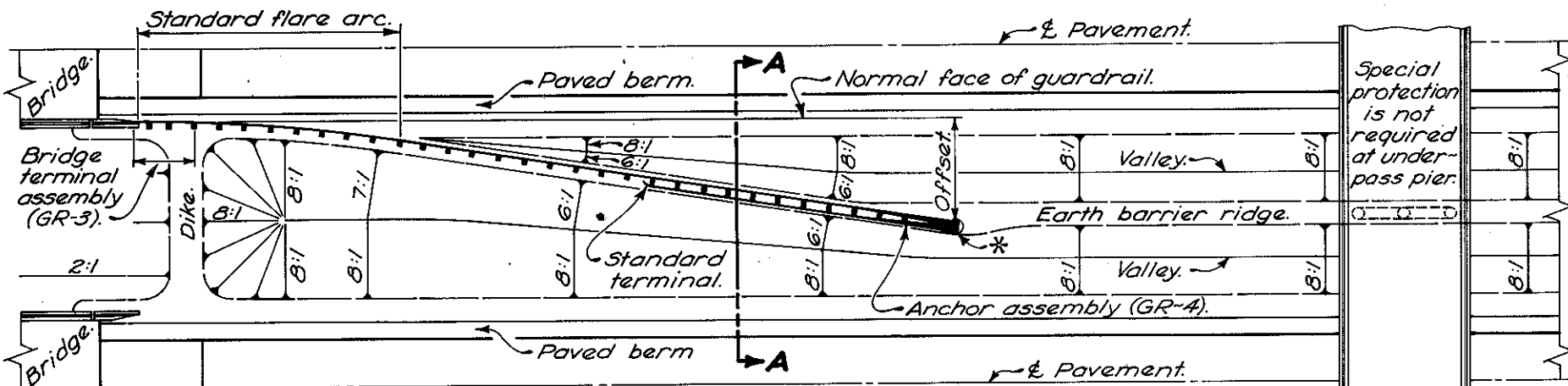
### NOTES

**MEDIAN SLOPES:** For 50' wide medians, backslopes shall be 4:1 and inslopes shall be 6:1. For 40' wide medians both backslopes and inslopes shall be 4:1.

When median slopes away from the bridge, the transverse slope shall be flattened in order to eliminate the need for a catch basin.

Details shown for pier protection in depressed median are designed to protect a pier 36 inches in width. If a wider pier is to be protected, face of barrier rail at the pier shall be offset 24 inches on each side. Space between faces of rails, shown in the table, shall be adjusted as required.

Type 5 guardrail and barrier rail shall be used for all median installations.

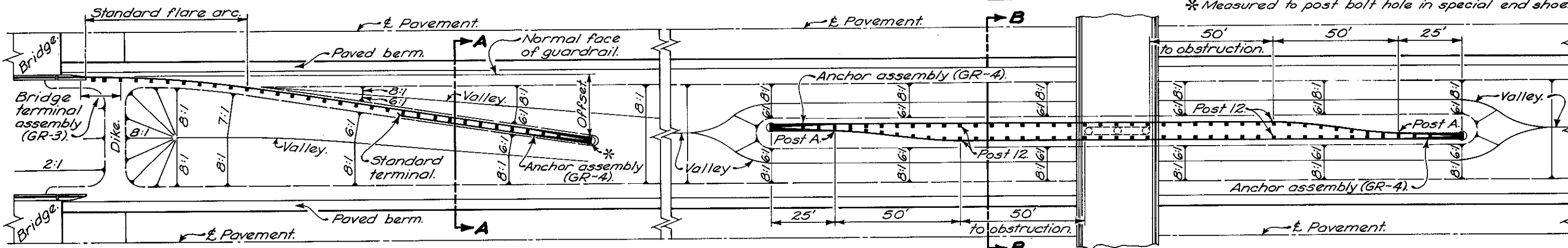


### BARRIER MEDIAN

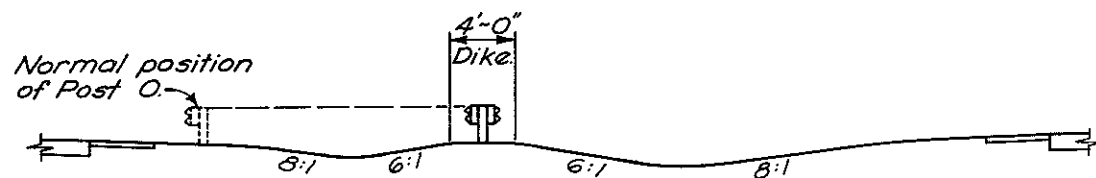
PIER PROTECTION	
Post No.	Space between faces of rails.
A	2.30'
5	3.00'
6	3.67'
7	4.33'
8	5.00'
9	5.67'
10	6.33'
11	6.83'
12	7.00'

TERMINAL POST OFFSET & RAIL LENGTHS REQUIRED FOR VARIOUS MEDIAN WIDTHS				
Median Width	* Terminal Post No.	Offset from normal face of rail	* Length	
			Standard rail	Barrier rail
40'	20	14.21'	87.50'	37.50'
50'	26	19.89'	112.50'	50.00'
55'	28	21.79'	112.50'	62.50'
60'	32	25.58'	125.00'	75.00'
84'	44	36.94'	175.00'	100.00'

\* Measured to post bolt hole in special end shoe.

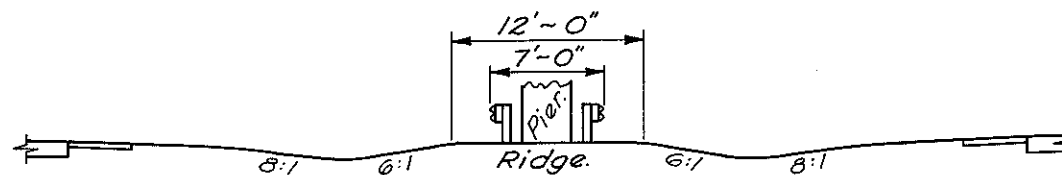


### DEPRESSED MEDIAN



Elevation of the top of rail at any point "X" shall be the same distance above the edge of pavement opposite point "X" as the top of rail at post "0" is above the edge of pavement at that point. Elevation of the top of dike shall be 27" below the top of rail at any point on the flare.

SECTION A-A



Elevation of the top of ridge is the same as the elevation at the edge of pavement.

SECTION B-B

BUREAU OF LOCATION AND DESIGN  
OHIO DEPARTMENT OF HIGHWAYS

## GUARDRAIL AT BRIDGES

STANDARD CONSTRUCTION DRAWING GR-6

APPROVED *R. L. Smith* ENGR. L. & D.

DATE  
2-15-68  
7-15-68  
1-1-71