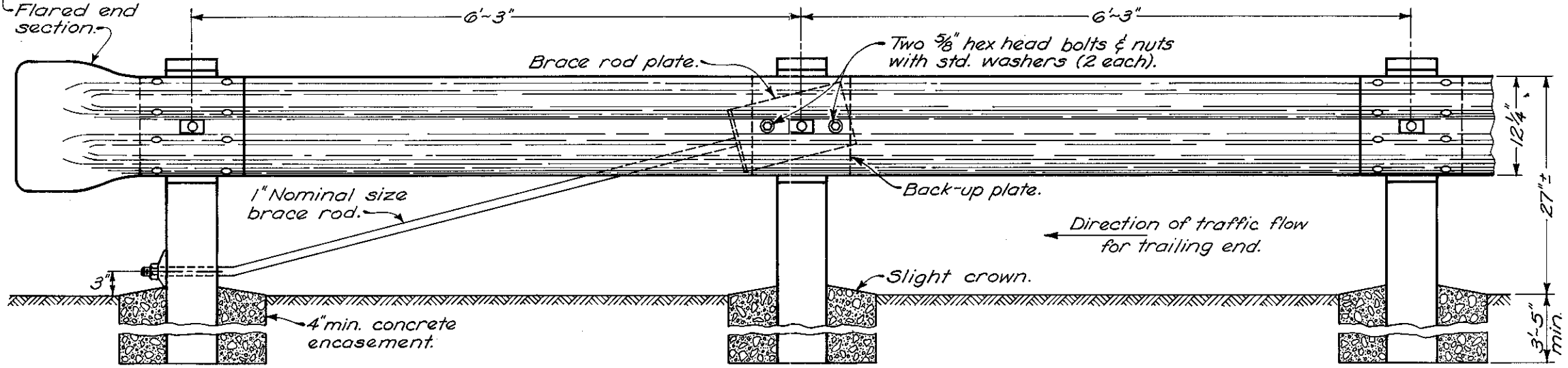
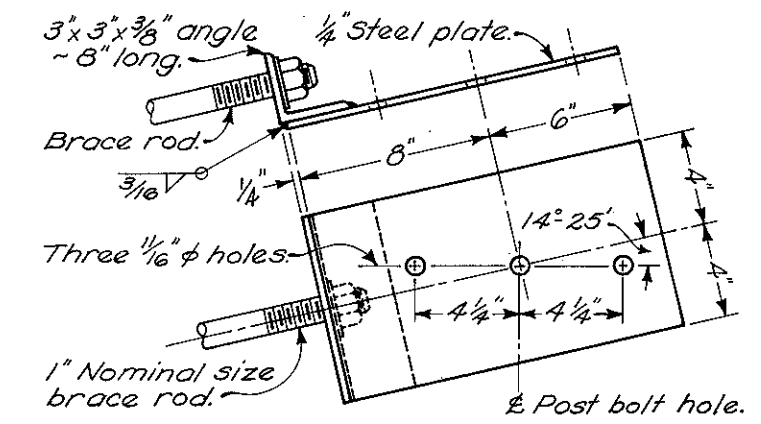


PLAN VIEW



ELEVATION

TYPE T



BRACE ROD PLATE

NOTES

FOR DETAILS not shown, see GR-1 and other Standard Construction Drawings pertaining to design of specific guardrail types.

ANCHOR ASSEMBLY, Type T, shall normally be used at trailing guardrail ends on mainline directional roadways or ramps where the assembly end is more than 30 feet from a pavement with opposite direction traffic flow, and as elsewhere specified on the plan.

POSTS shall be the same as used on the adjacent guardrail, with 4 inch minimum Class C concrete encasement.

SPACER BLOCKS shall be omitted if the adjacent run of guardrail does not have spacer blocks.

BRACE ROD assembly shall be galvanized and develop a tensile strength of at least 40,000 pounds.

PAYMENT for item 606, each, Anchor assembly, Type T, shall include all material and construction costs.

BUREAU OF ROADWAY DESIGN	
OHIO DEPARTMENT OF TRANSPORTATION	
ANCHOR ASSEMBLY	
STANDARD CONSTRUCTION DRAWING	GR-4A
APPROVED <i>E. J. Debus</i>	ENGR., R.D.
DATE 7-26-76	