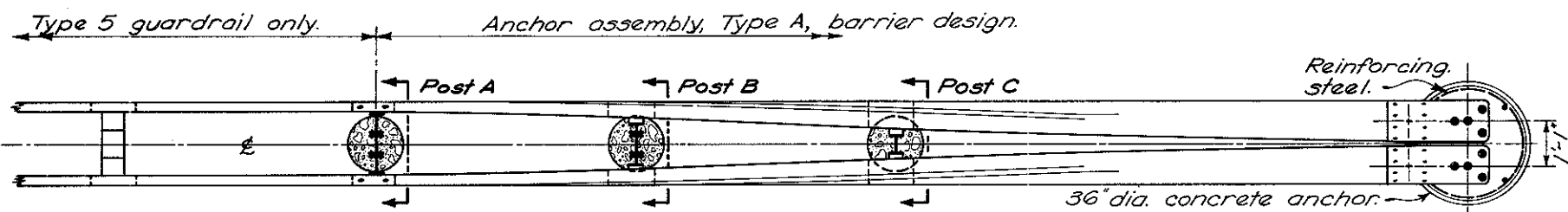
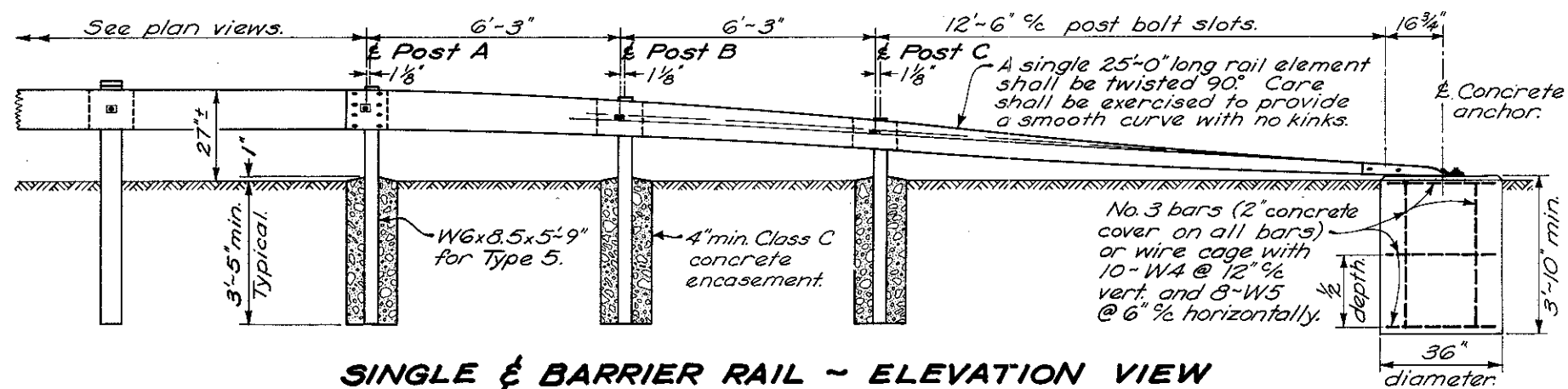


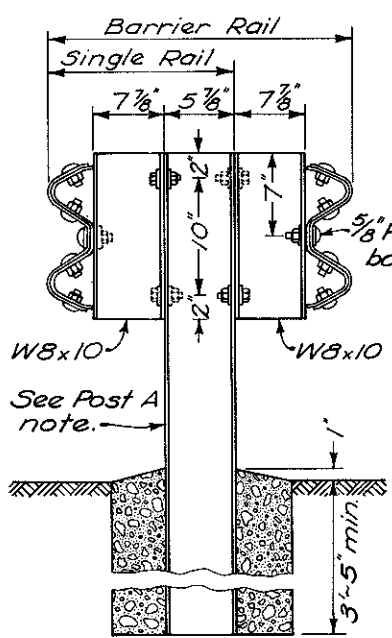
SINGLE RAIL - PLAN VIEW



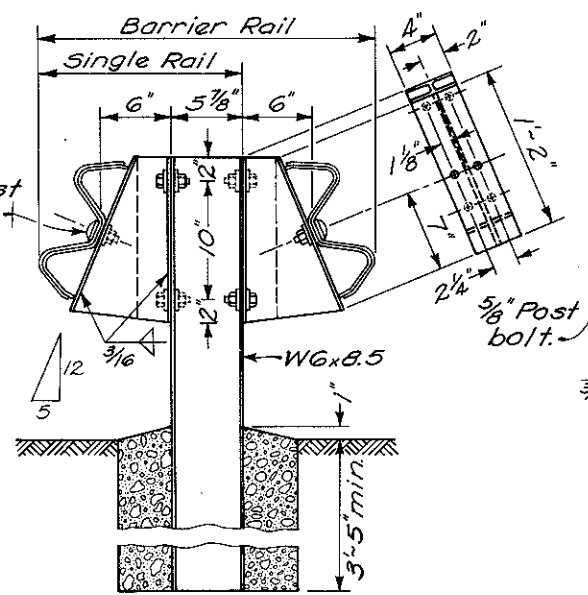
BARRIER RAIL - PLAN VIEW



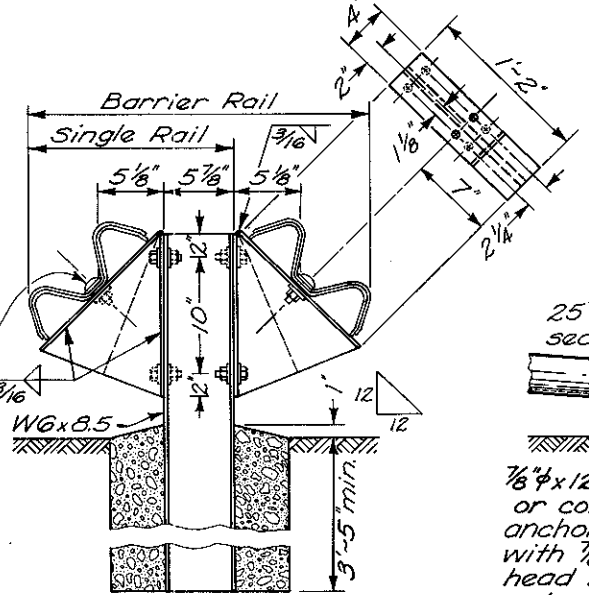
SINGLE & BARRIER RAIL - ELEVATION VIEW



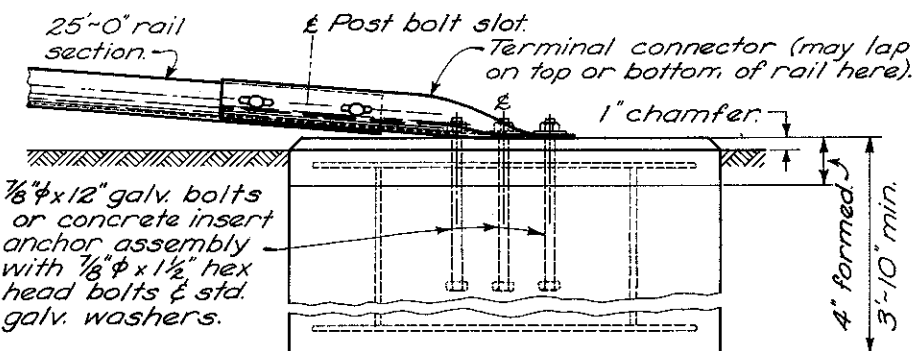
POST A



POST B



POST C



CONCRETE ANCHOR

NOTES

GENERAL: For details not shown, see GR-1 and other Standard Construction Drawings pertaining to specific guardrail type. All steel parts shall be galvanized.

ANCHOR ASSEMBLY TYPE A can be used at each free end of Type 4, 5 or 7 guardrail or barrier rail. It is primarily an approach end.

The 1'-6" flare offset from normal face of rail, shown in the plan view (for single rail installations), will be utilized only where shoulder width is insufficient for providing standard offsets shown on GR-5 and GR-6. Use of the 1'-6" offset will generally be limited to upgrading existing highways for safety or the construction or reconstruction of highways with design traffic less than 1000 ADT or design speeds less than 50 mph.

SPACERS for Posts B and C shall be made of 3/16" steel plate 710.15, or two sections of W6x8.5 or W8x10 cut in the web (see dashed line) and welded together on both sides.

All steel spacers and posts may be provided with additional bolt holes so that these items will not be required to be made right and left handed.

Spacers shall be fastened to their posts with two 5/8" hexhead bolts and nuts with standard washers on both sides.

POST BOLT WASHERS: Place one rectangular washer (see GR-1 for detail) between post bolt head or nut and the face of rail.

All other washers indicated on this drawing are standard galvanized steel of the appropriate size.

CONCRETE ANCHOR: Form top 4" of anchor and slope the top to conform to slope of the adjacent ground. The 36" diameter anchor may be replaced by a 2'-6" square anchor at the contractor's option.

CONCRETE: All concrete shall be Class C. Minimum post encasement shall be 4".

POST A: Rail details are shown for Type 5 guardrail. Where anchor assembly is attached to Type 4 or 7 guardrail, Post A shall be a standard Type 4 or 7 line post set in concrete, and the spacer block shall be omitted. Post bolt shall be 3/8" phi.

BUREAU OF LOCATION AND DESIGN OHIO DEPARTMENT OF TRANSPORTATION	
ANCHOR ASSEMBLY	
STANDARD CONSTRUCTION DRAWING	GR-4
APPROVED <i>W. J. Cunningham</i> ENGR., L.S.D.	
DATE 1-1-71 11-9-71 12-6-76	